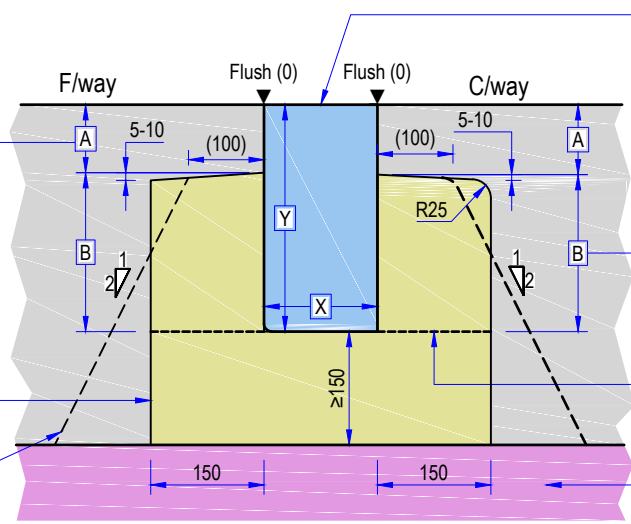


TYPE B - DROPPED KERBS

Cover over haunch (A) on each side to equal the combined depth of surface and laying/binder course of the overlying pavement

Concrete/HBM footing as notes 6-8

Alternative acceptable footing profile (both sides)



Kerb modules as series 1100 drawings. Joint modules as note 5. See also note 9

Note to designer: You must specify in series 1100 drawings the kerb modules from LBS/1100/01-07 that the Contractor shall use. These must have a Type 0 profile. Height (Y) must be ≥ 225 and meet the upstand requirements below. Width (X) must be as per SSDM standard DS.603

Haunch depth on each side (B) to be $\geq 0.5(Y)$. See also note 8

Acceptable horizontal construction joints, see General Requirement 1 (LBS/1100/09)

Install foundation where necessary as General Requirement 2-4 (LBS/1100/09-10)

B1 - Pedestrian crossing dropped kerb to footway/traffic island edge

Kerb modules as series 1100 drawings. Joint modules as note 5. See also note 9.

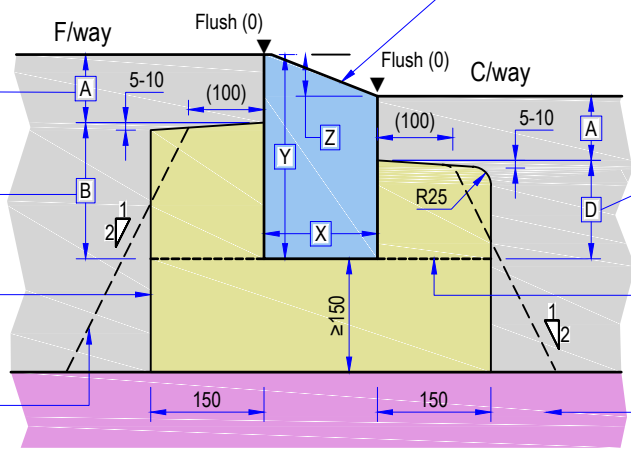
Note to designer: You must specify in series 1100 drawings the kerb modules from LBS/1100/01-07 that the Contractor shall use. These must have a Type 2 profile. Height (Y) must be ≥ 225 and meet the upstand requirements below. Batter (Z) must be 50, and Width (X) must be as per SSDM standard DS.603

Cover over haunch (A) on each side to equal the full depth of surface and laying/binder course of the overlying pavement

Haunch depth (B) to be $\geq 0.5(Y)$. See also note 8

Concrete/HBM footing as notes 6-8

Alternative acceptable footing profile (both sides)



Haunch depth (D) to be ≥ 60 . See also note 8

Acceptable horizontal construction joints, see General Requirement 1 (LBS/1100/08)

Install foundation where necessary as General Requirement 2-4 (LBS/1100/08-09)

B2 - Service access or cycle access dropped kerb to footway/traffic island edge

NOTES

- All dimensions are in millimetres unless otherwise stated.
- Do not scale from this drawing. Use only written dimensions.
- All references to Clauses are references to those from the Southwark Highway Specification unless otherwise stated. In the event of any conflict between the drawings and these Clauses, then the Clauses shall prevail. Drawings to be used in conjunction with **LBS/1100/01-07**.
- Kerbs and footings shall be laid as Cl.1101SR and Cl.1112AR.
- Kerbs shall be 6-12mm jointed using J-MWK6 mortar as Cl.1115AR.
- Footings/beams/haunching shall be either concrete as Cl.1001, ancillary concrete as Cl.2602 or a CBGM as series 800 Clauses. In any instance the minimum compressive strength class shall be C16/20. Formwork and shuttering shall be used in all instances to make efficient use of these materials and to achieve required profiles.
- Movement joints shall be provided through footings/beams/haunching as Cl.1101SR.
- If a horizontal construction joint is introduced then the depth of haunch above this shall be ≥ 100 .
- All kerb faces that will be in contact with concrete or bedding/jointing mortar that forms part of their footing shall be treated with a 1-2mm thickness of 'Tuffbond' by Steintec (or similar approved by the Employer) immediately before installation.
- Alternative footing profiles (General Arrangement 1) not to be used if reinforcement is incorporated into details.

| REV | DATE | REVISION DESCRIPTION / DETAILS | DRN BY | CHKD BY | APRVD BY |
|-----|------|--------------------------------|--------|---------|----------|
| | | | | | |
| | | | | | |
| | | | | | |
| | | | | | |
| | | | | | |
| | | | | | |
| | | | | | |
| | | | | | |
| | | | | | |
| | | | | | |



PROJECT: SOUTHWARK STREETSCAPE DESIGN MANUAL STANDARD DETAILS

TITLE: FOOTINGS FOR EDGE RESTRAINTS TYPE B - DROPPED KERBS

| | | | |
|--------------|-------------|----------|----|
| STATUS: | DRAFT | DRAWN | OM |
| SCALE: | 1:10 @ A3 | DESIGNED | OM |
| DRAWING NO: | LBS/1100/12 | CHECKED | DR |
| DATE DRAWN: | JUNE 2017 | APPROVED | DR |
| DATE ISSUED: | 25 Feb 2019 | REV: | - |

S:\HIGHWAYS MAINTENANCE\SSDM\CONTENT_ARCH\REVISED\SSDM\DETAILS\DRS\100-12 FOOTINGS FOR EDGE RESTRAINTS - DROPPED KERBS.DWG