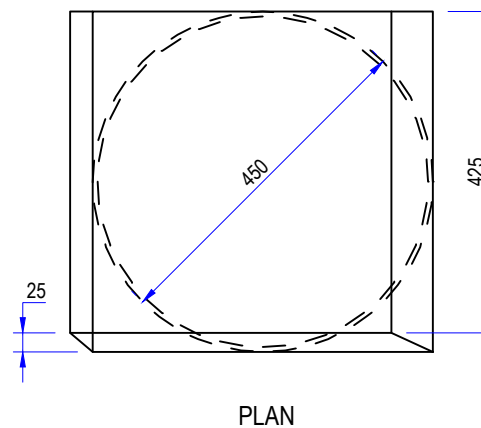
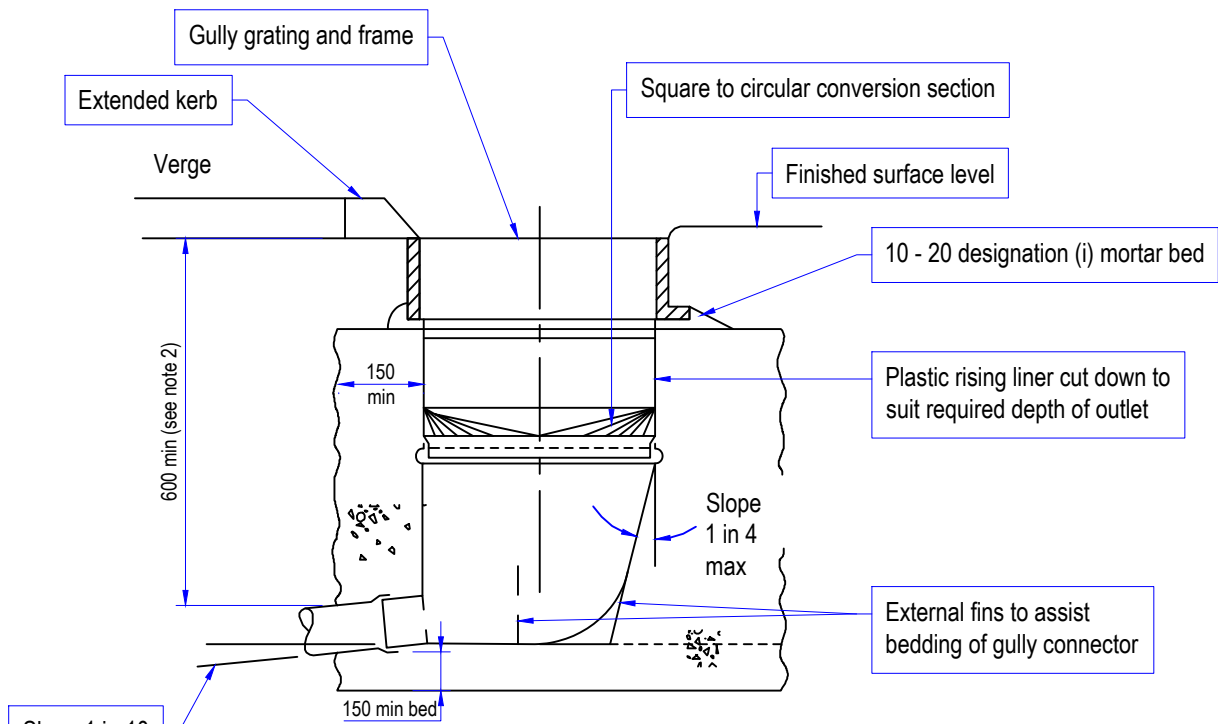


PLAN

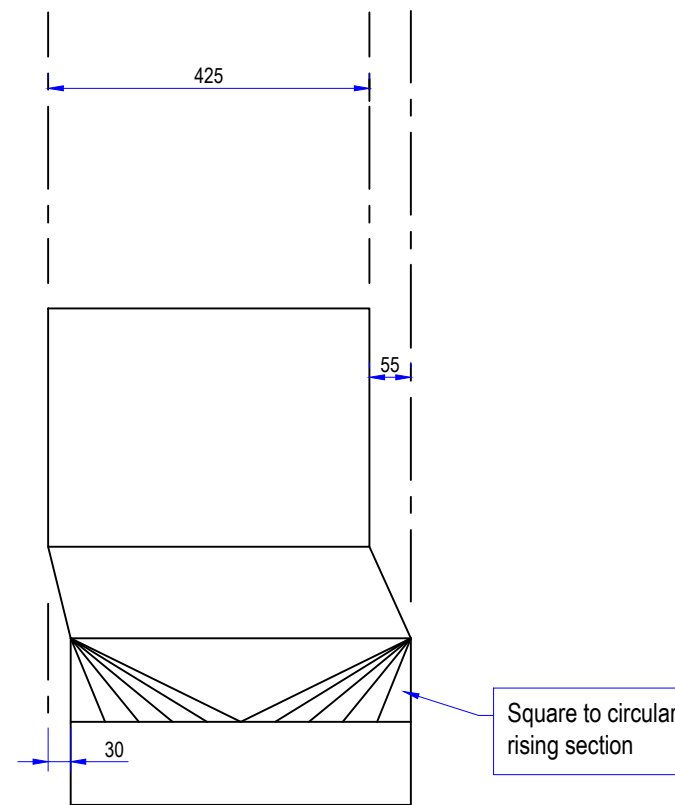


PLAN



SECTION A-A

SUMPLESS GULLY CHAMBER



ELEVATION ALTERNATIVE RISING SECTION

NOTES

- All dimensions in millimeters.
- The minimum depth from the top of the grating to the top of the gully outlet is to be 750 when the connecting pipe is under a carriageway or a hard shoulder and 600 elsewhere.
- A plastic internal shutter shall be used as shown, bedded on an in-situ concrete slab of 150 minimum thickness and surrounded by concrete 150 minimum thickness extending to the sides of the excavation. The in-situ concrete shall be ST4 to SHW, Clause 2602.
- Sumpless gully may also be precast concrete conforming to the concrete requirements of BS 5911-6

| REV | DATE | REVISION DESCRIPTION / DETAILS | DRN BY | CHKD BY | APRVD BY |
|-----|------|--------------------------------|--------|---------|----------|
|-----|------|--------------------------------|--------|---------|----------|

Southwark Council
southwark.gov.uk
160 TOOLEY STREET LONDON SE1P 5LX

PROJECT:
SOUTHWARK STREETSCAPE DESIGN MANUAL STANDARD DETAILS

TITLE:
SUMPLESS GULLY CHAMBER AND ALTERNATIVE RISING SECTION

| | | | |
|-------------|------------|--------------|---------------|
| STATUS: | DRAFT | DRAWN | SR |
| SCALE: | N.T.S. | DESIGNED | GL |
| DRAWING NO: | LBS/500/13 | CHECKED | GL |
| DATE DRAWN: | JULY 2017 | APPROVED | GL |
| | | REV | R0 |
| | | DATE ISSUED: | XX MONTH 20XX |