

# COSSALL PARK: Phase 1 Plan

## Nature Area

Existing scrub reduced/managed, to create a new nature space with open feel

- New hedge planting along boundary with Wood's Road flats.
- Bird & bat boxes located for local wildlife
- Footpath to encourage footfall and use of area
- Information boards to highlight local nature and wildlife
- The open meadow lawn will provide informal play space and educational area for learning about wildlife

We plan to install an outdoor gym in this location in the future, as part of phase 2

15 new trees will be planted across the whole park

The two pieces of play equipment will be kept (rope swinger and flying carpet)

We plan to install a new play area in this location in the future, as part of phase 2

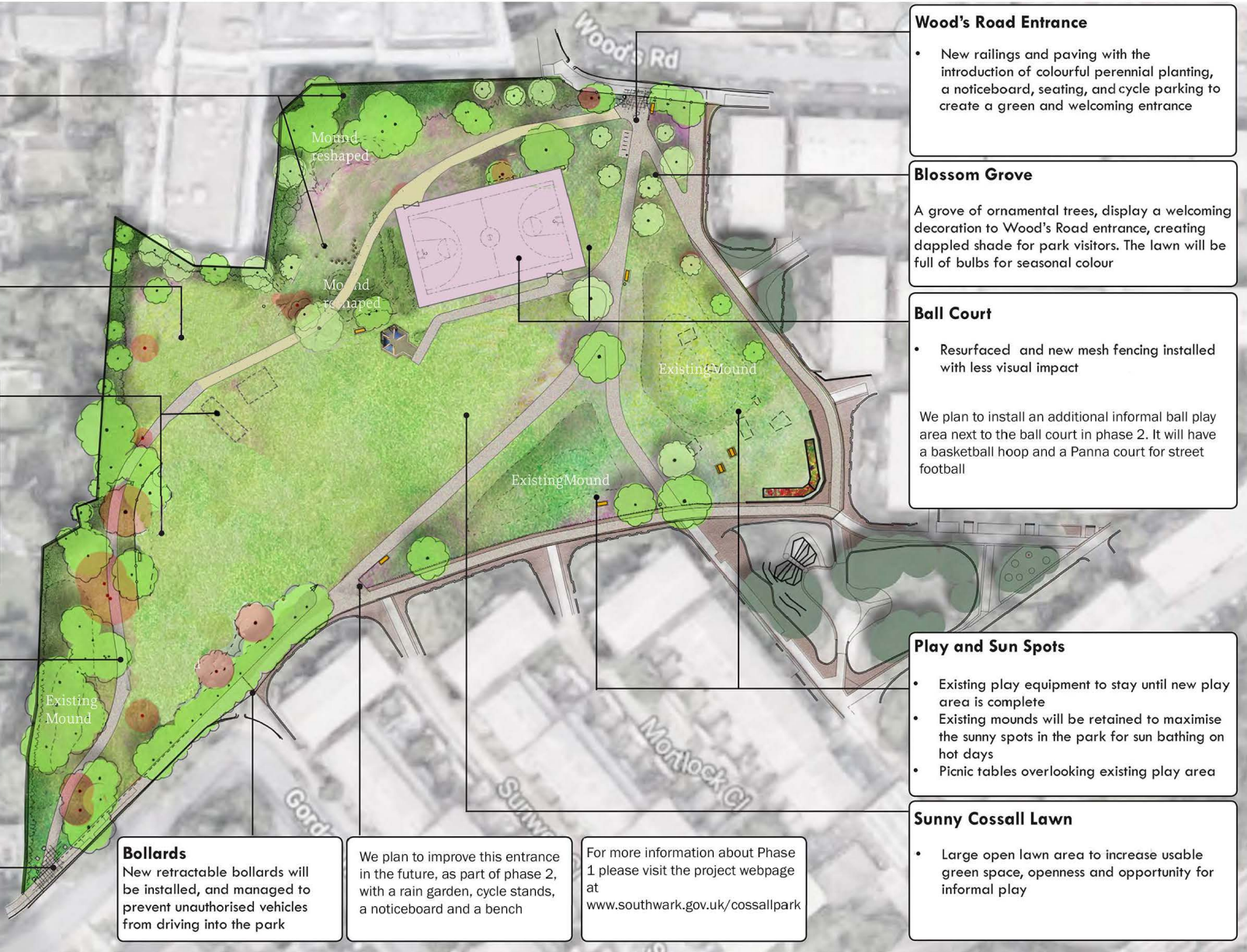
## Woodland Trail

Path weaving between the existing trees and mounds, improving access to the woodland area

- Park edges enhanced with understory planting and shrubs to create a biodiverse 'woodland edge'

## Harders Road Entrance

- Welcoming entrance and a new path to encourage access through the park
- Paving used to create visual connection between entrances



## Wood's Road Entrance

- New railings and paving with the introduction of colourful perennial planting, a noticeboard, seating, and cycle parking to create a green and welcoming entrance

## Blossom Grove

A grove of ornamental trees, display a welcoming decoration to Wood's Road entrance, creating dappled shade for park visitors. The lawn will be full of bulbs for seasonal colour

## Ball Court

- Resurfaced and new mesh fencing installed with less visual impact

We plan to install an additional informal ball play area next to the ball court in phase 2. It will have a basketball hoop and a Panna court for street football

## Play and Sun Spots

- Existing play equipment to stay until new play area is complete
- Existing mounds will be retained to maximise the sunny spots in the park for sun bathing on hot days
- Picnic tables overlooking existing play area

## Sunny Cossall Lawn

- Large open lawn area to increase usable green space, openness and opportunity for informal play

## Bollards

New retractable bollards will be installed, and managed to prevent unauthorised vehicles from driving into the park

We plan to improve this entrance in the future, as part of phase 2, with a rain garden, cycle stands, a noticeboard and a bench

For more information about Phase 1 please visit the project webpage at [www.southwark.gov.uk/cossallpark](http://www.southwark.gov.uk/cossallpark)

