

# Public notice (section 90G)

## Traffic calming measures

1. Southwark Council hereby GIVES NOTICE under sections 90A to 90I of the Highways Act 1980<sup>1</sup> and in accordance with the provisions of the Highways (Road humps) Regulations 1999<sup>2</sup> and the Highways (Traffic calming) Regulations 1999<sup>3</sup>, construct speed tables of flat-top construction having a maximum height of 100 millimetres and covering the entire width of the carriageway, at the following locations:-  
SHAD THAMES, extending from the common boundary of Nos. 6 (St George's Wharf) and 8 (St Saviour's Wharf) Shad Thames north-eastward for a distance of 6.5 metres; and  
QUEEN ELIZABETH STREET, extending from the north-western kerb-line of Shad Thames north-westward for a distance of 10.5 metres.
2. For more information about this notice please contact Southwark Council's Highways – Transport Projects team by e-mail [Highways@southwark.gov.uk](mailto:Highways@southwark.gov.uk)
3. Copies of this notice and plans may be found online at [www.southwark.gov.uk/trafficorders](http://www.southwark.gov.uk/trafficorders), paper copies may be obtained from or viewed at Highways, Southwark Council, Environment and Leisure, 3rd floor hub 2, 160 Tooley Street, London SE1 2QH. Please email [traffic.orders@southwark.gov.uk](mailto:traffic.orders@southwark.gov.uk), or call 020 7525 3497, for details.

Dated 11 April 2019

**Nicky Costin**

Parking and Network Management Business Unit Manager, Regulatory Services

---

<sup>1</sup>1980 c.66

<sup>2</sup>S.I. 1999/1065

<sup>3</sup>S.I. 1999/1026

# Statement of reasons

## Introduction of parking charges in parks

*The London Borough of Southwark (Off-street parking places) (Parks) (No. \*) Order 201\**

The scheme represents the short term measures that support the proposed longer term strategy of improving the streets in Shad Thames by focusing on improving pedestrian and cycling facilities, creating opportunities for tree planting and wider public realm improvements. Proposed measures include footway and carriageway works along Shad Thames (South) and the Queen Elizabeth Street/ Shad Thames junction within the North Bermondsey ward in the London Borough of Southwark.

Provisions for level footways, with dropped kerbs, and tactile paving along Shad Thames will improve the comfort of pedestrians and increase footfall.

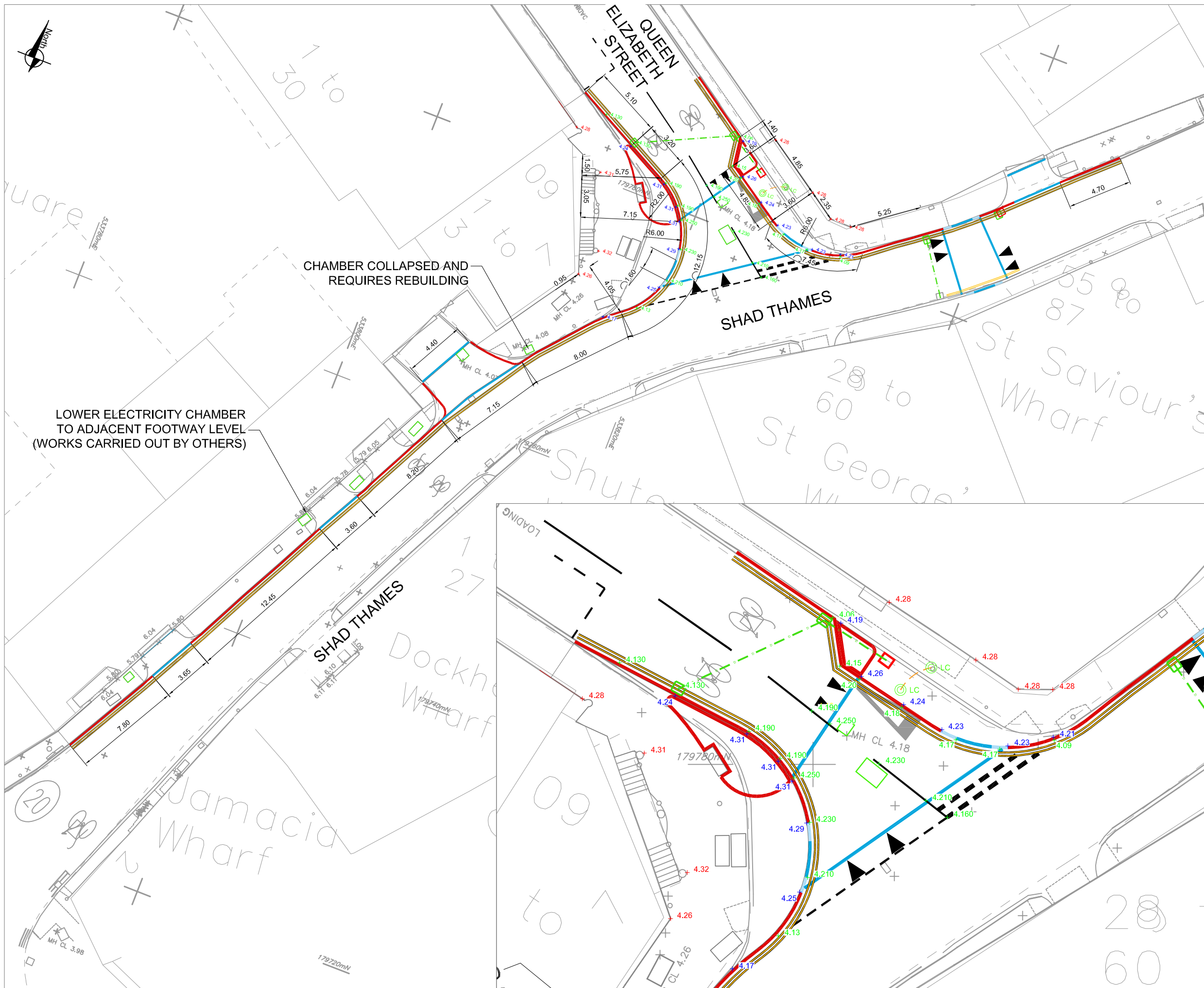
Improving road safety for vulnerable road users (pedestrians and cyclists) with new raised crossing facilities, the provision of bollards and narrowing of the junction.

The introduction of a street tree and shrub planting will also improve over streetscape and air quality.

Dated 11 April 2019

For more information contact:-

**Lola Olanlokun**  
Project Manager  
Transport Projects - Highways  
[highways@southwark.gov.uk](mailto:highways@southwark.gov.uk)

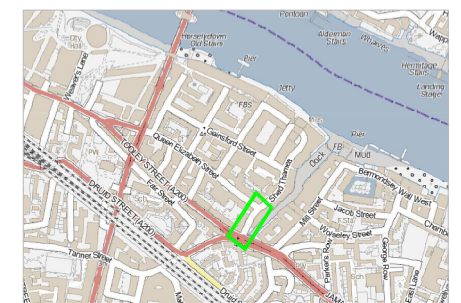


NOTES

- NOTES
1. ALL DIMENSIONS ARE IN METRES UNLESS OTHERWISE STATED. DO NOT SCALE FROM THIS DRAWING
  2. ALL ITEMS SHOWN IN GREY ARE TO REMAIN UNLESS OTHERWISE STATED.
  3. THE INFORMATION SHOWN ON THIS DRAWING IS BASED ON A TOPOGRAPHICAL SURVEY BY 'DAVID J. WEBB SURVEYS'
  4. THIS DRAWING IS TO BE READ IN CONJUNCTION WITH ALL OTHER DRAWINGS FOR JOB REF 18301 AS LISTED ON THE DRAWING ISSUE SHEET
  5. THIS DRAWING IS TO BE READ IN CONJUNCTION WITH THE LB OF SOUTHWARK STREETSCAPE DESIGN GUIDANCE (SSDM) AND ALL RELEVANT CONTRACT CLAUSES
  6. TRAFFIC MANAGEMENT TO BE IN ACCORDANCE WITH CHAPTER 8 OF THE TRAFFIC SIGNS MANUAL AND SAFETY AT STREET WORK AND ROAD WORKS. CONTRACTOR TO SCAN FOR SERVICES PRIOR TO EXCAVATION AND REFER TO UTILITY PLANS PROVIDED
  7. CONTRACTOR TO MAINTAIN ACCESS TO ALL PROPERTIES AND BUSINESSES AT ALL TIMES AND AGREE ALTERNATIVE ACCESS ARRANGEMENTS WITH STAKEHOLDERS

KEY

- PROPOSED NEW KERBS - REFER TO SERIES 1100
- PROPOSED NEW KERBS - REFER TO SERIES 1100
- - - INSTALL NEW GULLY AND CONNECTION
- - - REMOVE EXISTING GULLY AND RECYCLE CONNECTION TO MAIN SEWER
- Ref SETTING OUT POINT
- UTILITY CHAMBER LID TO BE ADJUSTED TO SUIT NEW LEVELS
- + 4.28 EXISTING LEVEL (BACK OF PATH)
- + 4.21 PROPOSED LEVEL (TOP OF KERB / FOOTWAY)
- + 4.09 PROPOSED LEVEL (BOTTOM OF KERB / CARRIAGEWAY)
- 50mm DIAMETER FLEXIBLE DUCTING, APPROPRIATE FOR STREET LIGHTING



REV	DATE	REVISION DESCRIPTION / DETAILS	DRN BY	CHKD BY	APRVD BY



PROJECT:		18301 - SHAD THAMES AREA IMPROVEMENTS			
TITLE:		SERIES 500 & SETTING OUT DETAILS			
STATUS:	DETAILED DESIGN	DRAWN	SC	DESIGNED	DN
SCALE:	1:250	CHECKED	RB	APPROVED	RB
DRAWING NO:	LBS/18301/500/01	REV:	-		
DATE DRAWN:	12 SEPT 2018	DATE ISSUED:	FEB 2019		

S:\TRANSPORT PROJECTS\SCHEME DESIGN & CONSTRUCTION\TEAM DESIGN\TASKS\18301 SHAD THAMES (STREET) DE TAIL DESIGN REV 02.DWG