



Rutley Close update

JANUARY 2022

We are building 25 new council homes on Rutley Close which will be let at council rent levels. We will also be carrying out other improvements to the estate and surrounding area.

Working hours

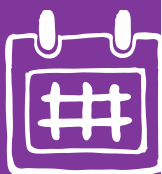
Our site working hours are: Monday – Friday: 8am – 5pm, Saturday: 8am – 1pm
(No works on Sundays or Bank Holidays)

We do our best to keep noise and disruption to a minimum during these times. However at times there will be a certain level of noise which is unavoidable. We apologise in advance for any disturbance. If you are concerned about the level of noise coming from the site, please contact us on the details provided at the end of this newsletter.

Noise and disruption

Please note Otto Street will be closed on Tuesday 8 February 2022 so that we can remove the crane from the site. The road will be closed from approx. 7am until 5pm but we are hoping it will be quicker than this. If we can we will reopen the road as soon as possible.

There should be no more noise than usual but we will monitor and regulate any noise.



Timeline

Completion date Spring 2022

Social value

Southwark Council ensures that all their building contractors give back to the local community when they take on construction projects. To meet these commitments, we have four local operatives working on site now, three of which live on the Brandon Estate.

Guildmore is committed to providing opportunities for residents in the borough. Are you looking for a career in the construction industry? We have opportunities coming up in the future for apprenticeships and tradespersons in carpentry, plumbing, electrical works, decorating and general labour. If you are interested, please contact David Sole.

YOUR CONTACTS

Site Manager: David Sole, Mob: 07976 287 986 email: david.sole@guildmore.com
Resident Liaison Officer: Valerie Cole, valerie.cole@guildmore.com

Southwark Council Project Manager: Nannette Sakyi Mob:07783781065 email
Nannette.Sakyi@southwark.gov.uk

Southwark Council Project Officer: Sadia Deen Mob: 0207 525 5085 email
Sadia.Deen@southwark.gov.uk

[southwark.gov.uk/11000homes](https://www.southwark.gov.uk/11000homes)

<https://www.southwark.gov.uk/housing/new-council-homes/where-we-re-building/newington/39-44-rutley-close>

