

Public notice

Newington Width Restriction Trial: Cooks Road, Manor Place and Penton Place

The London Borough of Southwark (Width restriction) (Newington trials) Experimental Traffic Order 2019
The London Borough of Southwark (Parking places) (CPZ 'E') (No. 2) Experimental Traffic Order 2019
The London Borough of Southwark (Parking places) (CPZ 'J') (No. 2) Experimental Traffic Order 2019
The London Borough of Southwark (Waiting and loading restrictions) (Amendment No. 4) Experimental Traffic Order 2019

1. Southwark Council hereby GIVES NOTICE that on 24 January 2019 it has made the above experimental orders under sections 9 and 10 of the Road Traffic Regulation Act 1984¹.
2. The effect of the experimental orders will be:-
 - (a) to introduce new width restrictions for any vehicle of more than 2 metres (6 feet 6 inches) in width (including any load carried) to enter into or proceed in the following locations:-
 - (i) in COOKS ROAD, between a point 21.5 metres north-west of the north-western kerb-line of Forsyth Gardens (north-east to south-west arm) and a point 29 metres south-east of the south-eastern kerb-line of Otto Street;
 - (ii) in MANOR PLACE, between a point 22.8 metres north-east of the north-eastern kerb-line build-out of Braganza Street and a point 4.5 metres south-west of the common boundary of Nos. 175 and 177 Manor Place; and
 - (iii) in PENTON PLACE, between a point 18 metres south-east of the south-eastern kerb-line of Alberta Street and a point 39.5 metres north-west of the north-western kerb-line of Iliffe Street;
 - (b) within CPZ 'E', to reduce the length, to 4.5 metres, of an existing permit holders' parking place in PENTON PLACE on the south-west side *opposite* No. 45 Penton Place;
 - (c) within CPZ 'J', to split an existing permit holders' parking place (removing a length of 4.5 metres) in COOKS ROAD on the south-west side *outside* Nos. 103 to 107 Cooks Road; and
 - (d) to amend existing waiting restrictions in COOKS ROAD, MANOR PLACE and PENTON PLACE to accommodate the above changes.
3. For more information on the background and implementation of this experimental order please contact the council's Highways – Transport Projects team Highways@southwark.gov.uk.
4. Copies of the orders, which will come into force on 11 March 2019 (and expire on 10 September 2020), this notice, a plan and a statement of the council's reasons for making the order may be found online at www.southwark.gov.uk/trafficorders, paper copies may be obtained from or viewed at Highways, Environment and Leisure, 3rd floor hub 2, 160 Tooley Street, London SE1 2QH. Email traffic.orders@southwark.gov.uk or call 020 7525 3497 for details.
5. The council will in due course be considering whether the provisions of the experimental orders should be continued in force indefinitely, by means of a permanent order made under section 6 of the Road Traffic Regulation Act 1984. Anyone wishing to object to the making of the permanent order or make any other representation regarding the scheme would have 6 months to do so, from the date the experimental order comes into force (or, if the order is varied by a subsequent order or modified pursuant to section 10(2) of the Road Traffic Regulation Act 1984, from the date that variation order or modification comes into force), and may send a statement in writing by e-mail to traffic.orders@southwark.gov.uk or to: Traffic Order consultations, Highways, Southwark Council, Environment and Leisure, P.O. Box 64529, London SE1P 5LX or use the form labelled '*Parking - Road traffic and highway schemes - responding to statutory consultation notices*' at www.southwark.gov.uk/statutoryconsultationnotices quoting the reference '*TMO1819-EXP06_Newington WR Trial*'. Please note that if you wish to object to the scheme you must state the grounds on which your objection is made.
6. When making an objection or representation, please be aware that this may be communicated to other people who may be affected. Information provided in response to this notice, including in some circumstances personal information, may also be subject to publication or disclosure under the requirements of current access to information legislation.

7. Anyone wishing to question the validity of the orders or of any provision therein on the grounds that it is not within the relevant powers of the Road Traffic Regulation Act 1984 or that any of the relevant requirements thereof or of any relevant regulations made thereunder have not been complied with in relation to the orders may, within 6 weeks of the date on which the orders were made, make application for the purpose to the High Court.

Dated 24 January 2019

Nicky Costin

Parking and Network Management Business Unit Manager, Regulatory Services

¹ 1984 c.27

Statement of reasons

Newington Width Restriction Trial: Cooks Road, Manor Place and Penton Place

The London Borough of Southwark (Width restriction) (Newington trials) Experimental Traffic Order 2019

The London Borough of Southwark (Parking places) (CPZ 'E') (No. 2) Experimental Traffic Order 2019

The London Borough of Southwark (Parking places) (CPZ 'J') (No. 2) Experimental Traffic Order 2019

The London Borough of Southwark (Waiting and loading restrictions) (Amendment No. 4) Experimental Traffic Order 2019

The Council sought the views of residents and stakeholders in the Newington ward on the proposals to reduce through-traffic and improve the safety within the ward, in the London Borough of Southwark.

It is recommended to introduce three width restriction points in the Newington ward, to reduce traffic within the Quietway 8 priority cycle-route between John Ruskin Street and Kennington Park. The trial width restrictions will hopefully mitigate 'rat-running', speeding and the amount of pollution in the area caused by motor vehicles such as Heavy-goods vehicles (HGVs).

The width restrictions will prohibit any vehicle of more than 2 metres (6 feet 6 inches) in width (including any load carried) to enter into or proceed in the following locations;

- a) in COOKS ROAD, outside Nos. 103 to 107 Cooks Road;
- b) in MANOR PLACE, outside No. 179 Manor Place and the Walworth Garden Farm; and
- c) in PENTON PLACE, outside No. 1 to 12 Pullen's Estate, No. 45 Penton Place.

Existing waiting restrictions and parking places in these roads will be amended to accommodate the above measures, throughout the trial.

These measures will be subject to an experimental Traffic Management Orders (TMOs). A TMO is the legal mechanism the council as traffic authority uses to control aspects of the way that the highway is used. They provide the legal backing to signs and road markings used on the highway and allow them to be enforceable.

The experimental TMOs will be enforceable for a period between 6-18 months to allow the assessment of any impact the restrictions might have on the area and surrounding roads, and to revise the scheme if necessary within that time.

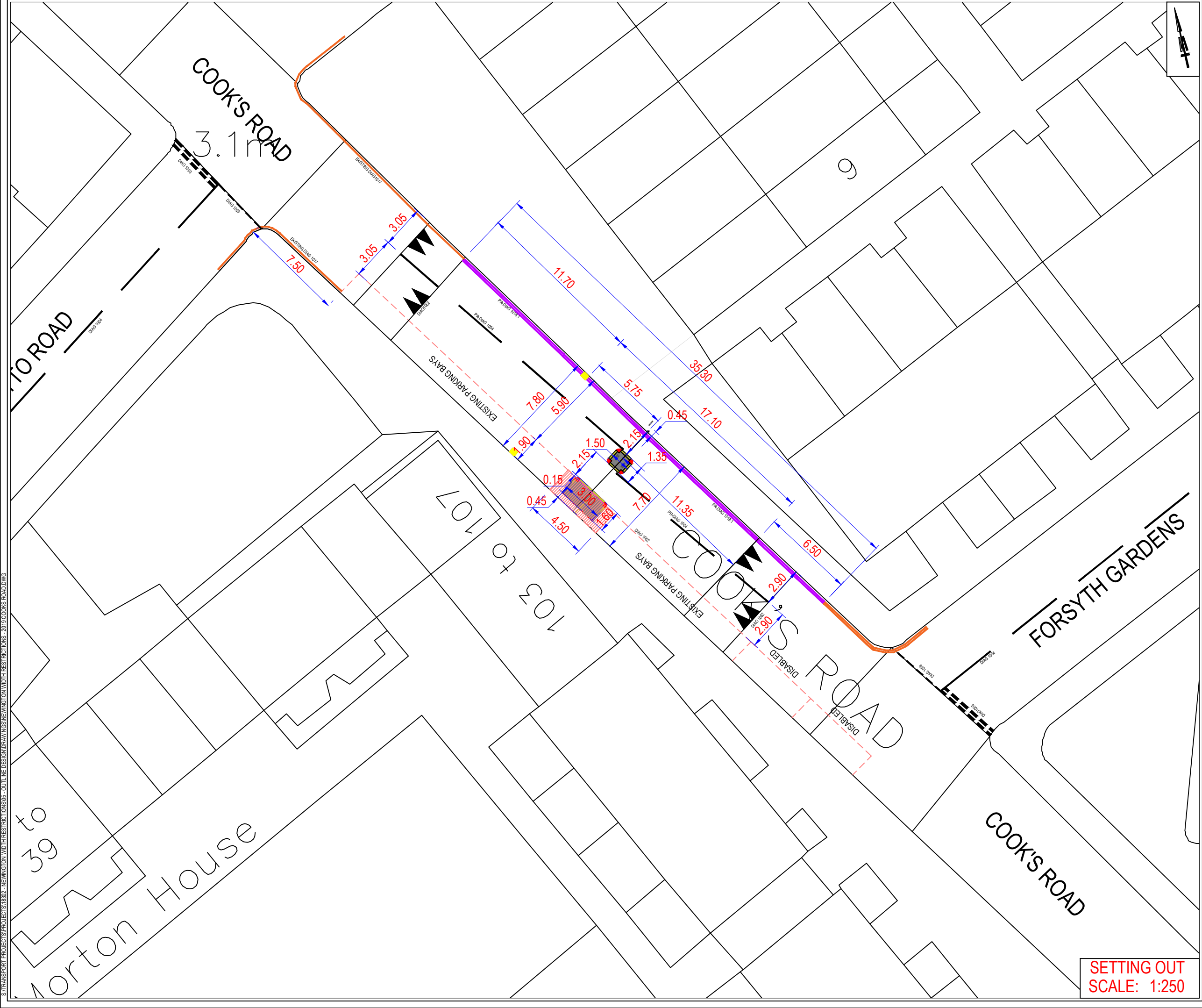
Dated 24 January 2019

For more information contact:







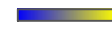


Highways – Transport Projects

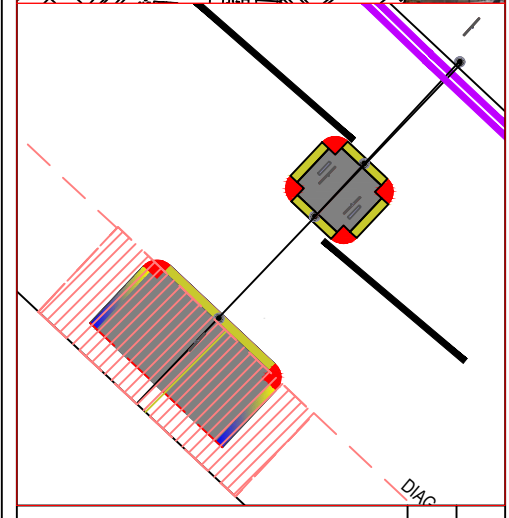
0207 525 7903

Highways@southwark.gov.uk



NOTES

-  300x300MM STANDARD GRANITE QUADRANTS.
-  INSTALLATION OF NEW MANCHESTER BOLLARD. BOLLARDS TO BE ALIGNED WITH THE KERB FACE.
-  PROPOSED TSRGD 1018.1
-  EXISTING TSRGD 1017
-  TSRGD 629A ON NEW OR EXISTING LAMP COLUMN
-  SOLAR POWERED STANDARD KEEP LEFT BOLLARD
-  150x300 MM STANDARD GRANITE K15-T1(H/S) KERBS WITH TRANSITIONAL HEIGHT (FROM 0.06 MM TO 150MM FACE HEIGHT)
-  150x300 MM STANDARD GRANITE K15-T1(H/S) KERBS WITH 150MM FACE HEIGHT)
-  STANDARD CARRIAGEWAY ASPHALT MATERIAL ON BUILD-OUT AND CENTRAL ISLAND

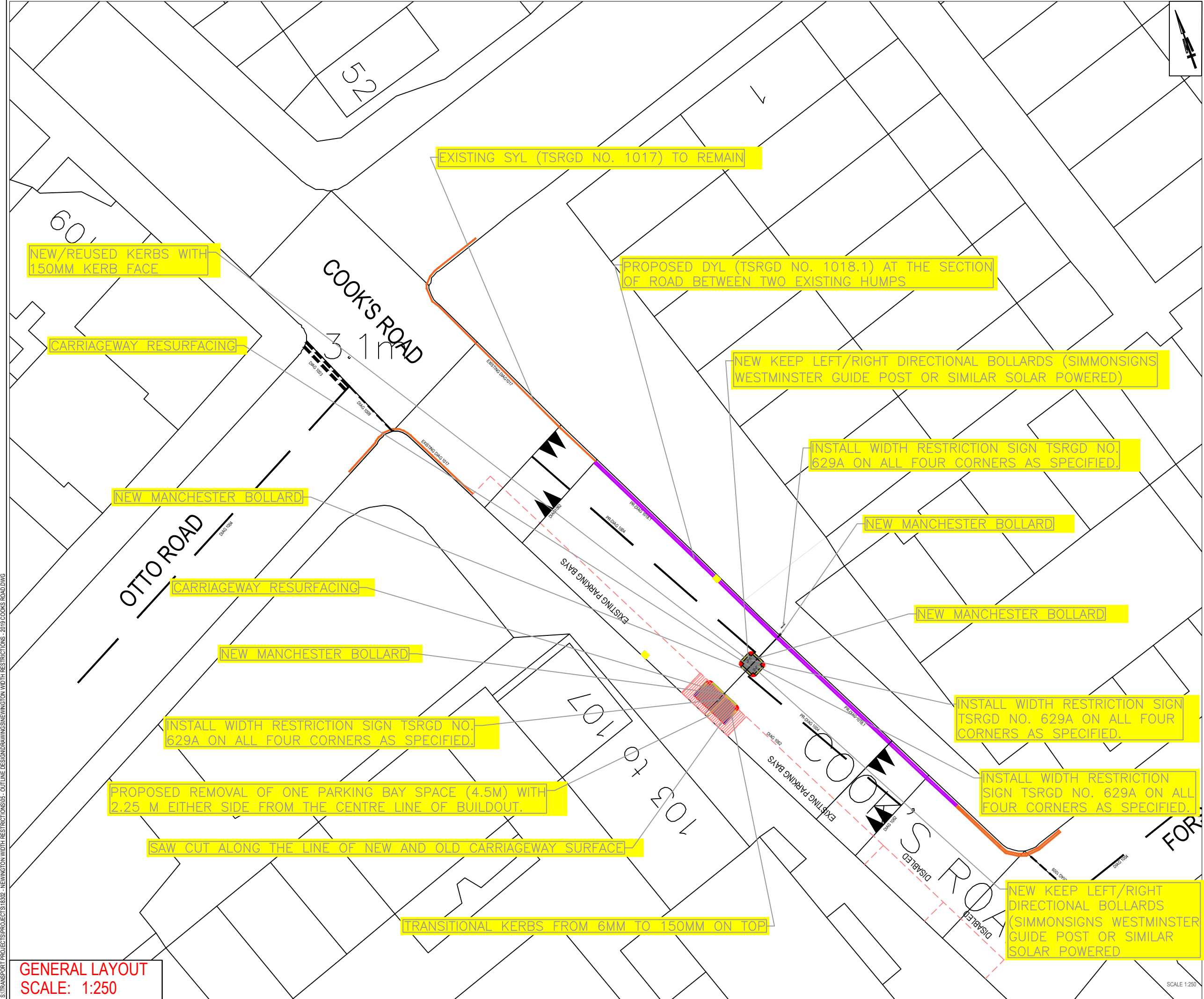


REV	DATE	REVISION DESCRIPTION / DETAILS	DRN BY	CHKD BY	APRVD BY



PROJECT: NEWINGTON TRIAL WIDTH RESTRICTION					
TITLE: COOK'S ROAD					
STATUS: DRAFT		DRAWN: SC		DESIGNED: SK	
SCALE: 1:250		CHECKED: SK		APPROVED: RB	
DRAWING NO: LBS/18302/OD/WR/03		REV: A		DATE DRAWN: AUG 2018	
DATE DRAWN: AUG 2018		DATE ISSUED: JAN 2019			

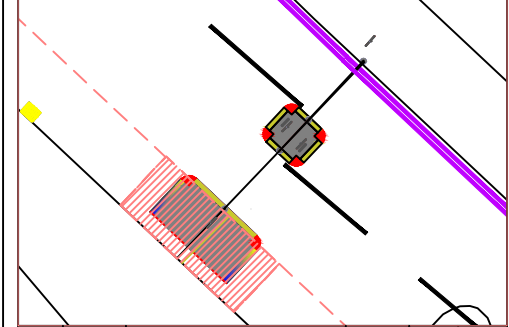
SETTING OUT
SCALE: 1:250



GENERAL LAYOUT
SCALE: 1:250

NOTES

- 300X300MM STANDARD GRANITE QUADRANTS.
- INSTALLATION OF NEW MANCHESTER BOLLARD. BOLLARDS TO BE ALIGNED WITH THE KERB FACE.
- PROPOSED TSRGD 1018.1
- EXISTING TSRGD 1017
- TSRGD 629A ON NEW OR EXISTING LAMP COLUMN
- SOLAR POWERED STANDARD KEEP LEFT BOLLARD
- 150x300 MM STANDARD GRANITE K15-T1(H/S) KERBS WITH TRANSITIONAL HEIGHT (FROM 0.06 MM TO 150MM FACE HEIGHT)
- 150x300 MM STANDARD GRANITE K15-T1(H/S) KERBS WITH 150MM FACE HEIGHT
- STANDARD CARRIAGEWAY ASPHALT MATERIAL ON BUILD-OUT AND CENTRAL ISLAND



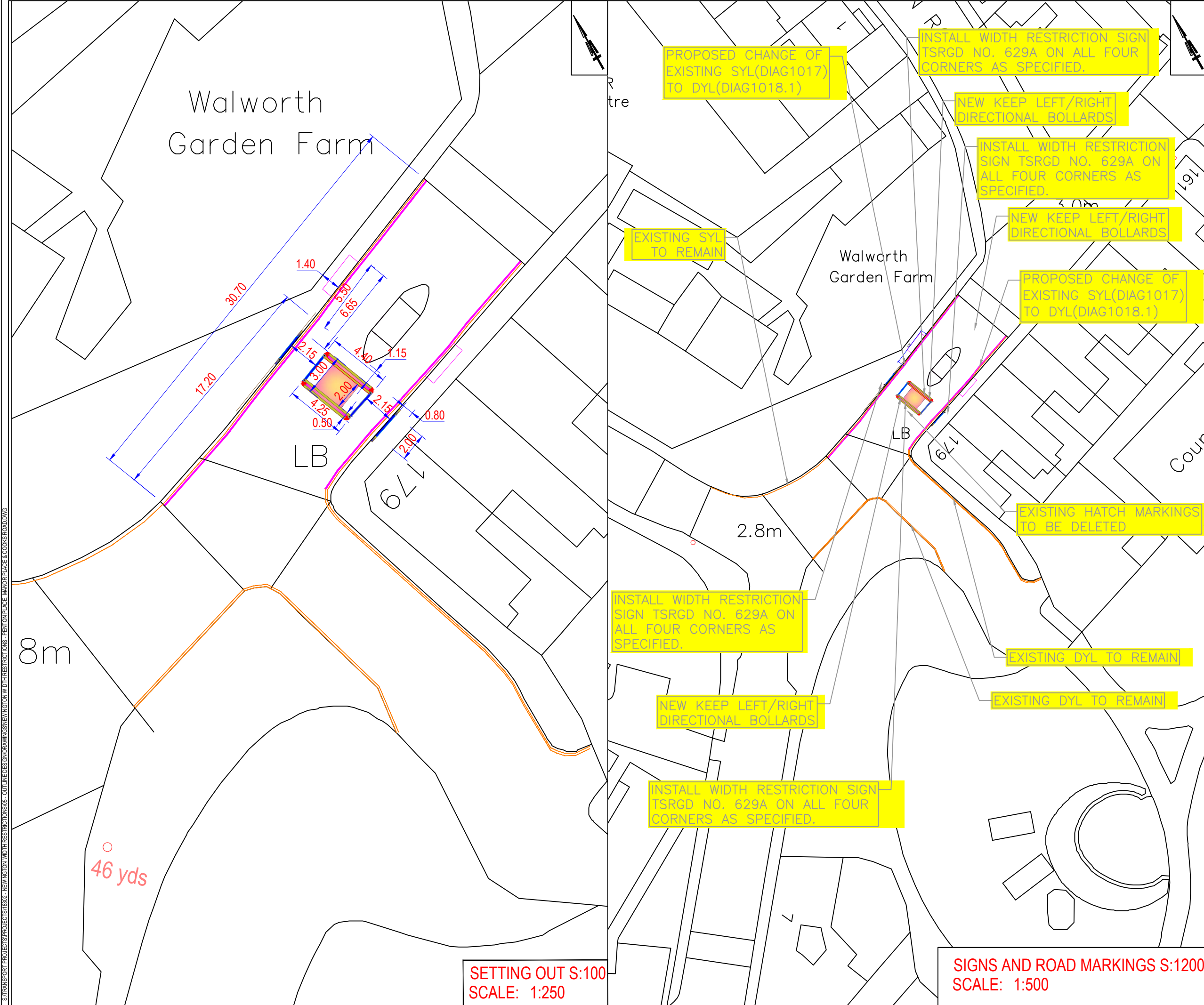
REV	DATE	REVISION DESCRIPTION / DETAILS	DRN BY	CHKD BY	APRVD BY



PROJECT: NEWINGTON TRIAL WIDTH RESTRICTION

TITLE: COOKS ROAD

STATUS: DRAFT	DRAWN: SC
SCALE: 1:250	DESIGNED: SK
DRAWING NO: LBS/18302/OD/WR/03	CHECKED: SK
DATE DRAWN: AUG 2018	APPROVED: RB
DATE ISSUED: JAN 2019	REV: A



- NOTES**
- 300x300MM STANDARD GRANITE QUADRANTS.
 - INSTALLATION OF NEW MANCHESTER BOLLARD. BOLLARDS TO BE ALIGNED WITH THE KERB FACE.
 - TSRGD 629A ON NEW OR EXISTING LAMP COLUMN
 - SOLAR POWERED STANDARD KEEP LEFT BOLLARD
 - EXTENT OF DYL EXTENSION AS PART OF SCHEME
 - 150x300 MM STANDARD GRANITE K15-T1(H/S) KERBS WITH TRANSITIONAL HEIGHT (FROM 0.06 MM TO 150MM FACE HEIGHT)
 - 150x300 MM STANDARD GRANITE K15-T1(H/S) DROPPED KERBS HEIGHT (FROM 00 MM TO 6MM)
 - 150x300 MM STANDARD GRANITE K15-T1(H/S) KERBS WITH 150MM FACE HEIGHT)
 - STANDARD CARRIAGEWAY ASPHALT MATERIAL ON BUILD-OUT AND CENTRAL ISLAND
 - STANDARD CENTRAL ISLAND ASPHALT MATERIAL LAID TO DRAIN THE WATER OUTWARD WITH HIGH POINT AT THE CENTRE OF ASPHALT SURFACE
 - BREAK OUT EXISTING AND REINSTATE TO MATCH WITH AMBIENT FEATURES
- NOTE:
PLEASE REFER SEPARATE DRAWING FOR THE POSITIONING OF OVERALL DIRECTIONAL SIGNS



REV	DATE	REVISION DESCRIPTION / DETAILS	DRN BY	CHKD BY	APPRD BY

Southwark Council
southwark.gov.uk
160 TOOLEY STREET LONDON SE1P 5LX

PROJECT:
NEWINGTON AREA TRIAL WIDTH RESTRICTIONS

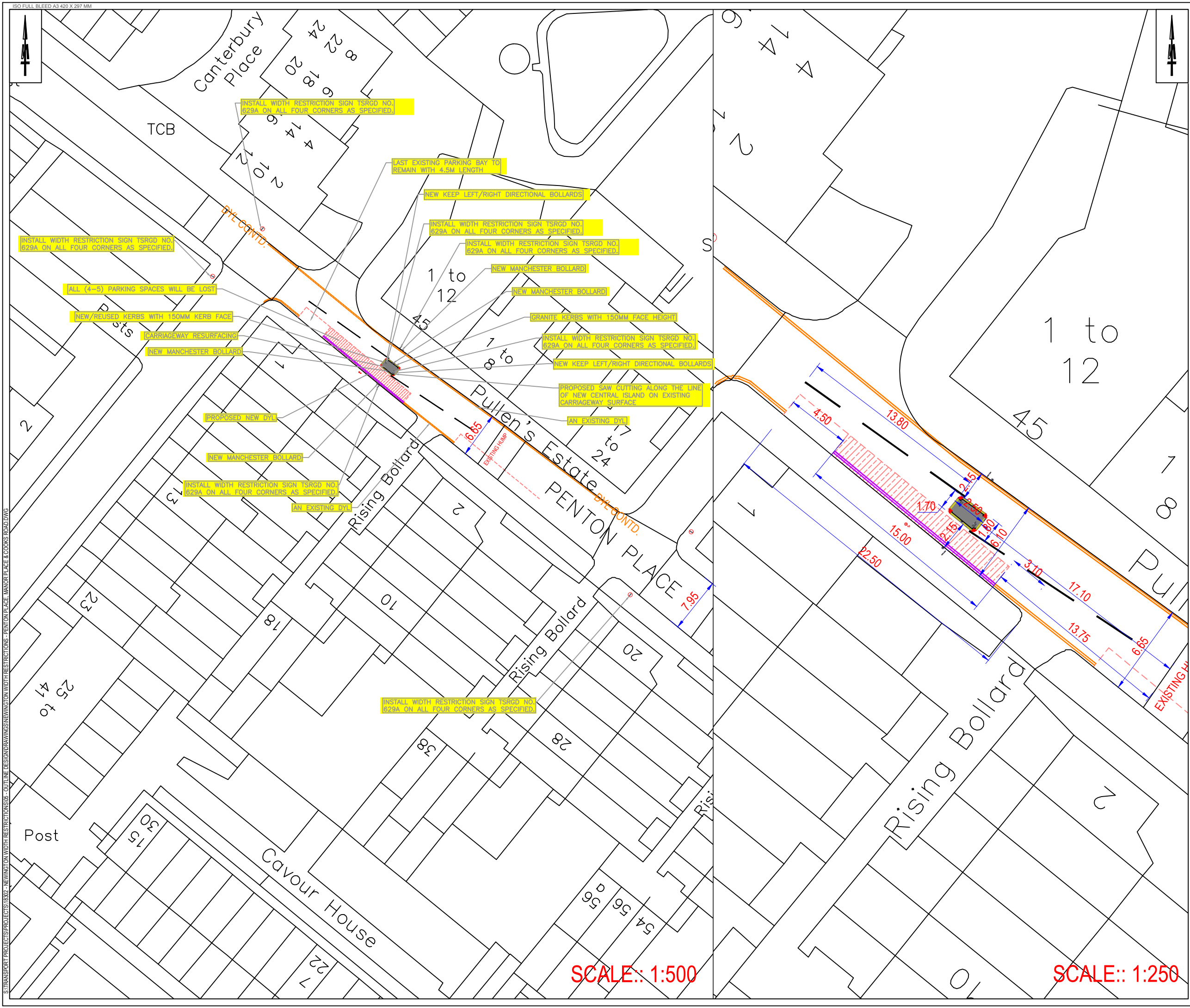
TITLE:
MANOR PLACE

STATUS:	DRAFT	DRAWN:	SC
SCALE:	1:VARIES	DESIGNED:	SK
DRAWING NO:	LBS/18302/OD/WR/02	CHECKED:	SK
DATE DRAWN:	AUG 2018	APPROVED:	RB
DATE ISSUED:	JAN 2019	REV:	A

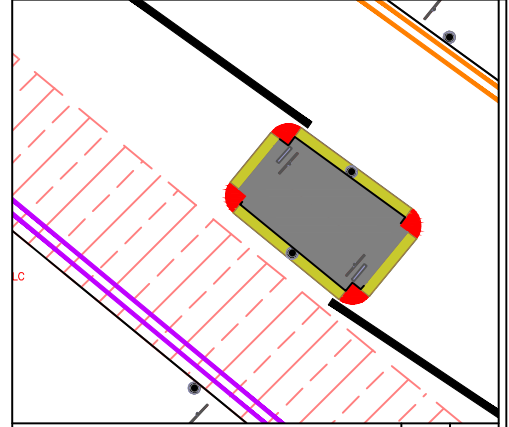
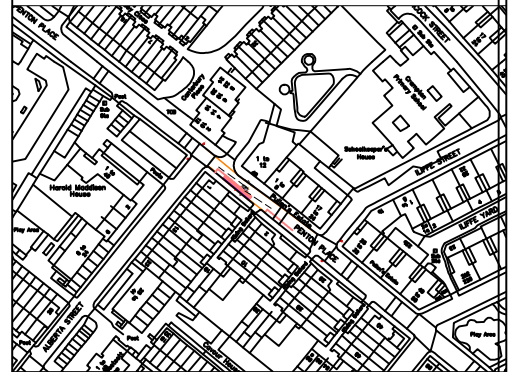
S:\TRANSPORT PROJECTS\PROJECTS\18302 - NEWINGTON WIDTH RESTRICTIONS - OUTLINE DESIGN\DRAWINGS\NEWINGTON WIDTH RESTRICTIONS - PENTON PLACE, MANOR PLACE & COOKS ROAD.DWG

**SETTING OUT S:100
SCALE: 1:250**

**SIGNS AND ROAD MARKINGS S:1200
SCALE: 1:500**



- NOTES**
- 300x300MM STANDARD GRANITE QUADRANTS.
 - INSTALLATION OF NEW MANCHESTER BOLLARD. BOLLARDS TO BE ALIGNED WITH THE KERB FACE.
 - TSRGD 629A ON NEW OR EXISTING LAMP COLUMN
 - SOLAR POWERED STANDARD KEEP LEFT BOLLARD (SIMMONSIGNALS WESTMINSTER GUIDE POST OR SIMILAR)
 - 150x300 MM STANDARD GRANITE K15-T1(H/S) KERBS WITH TRANSITIONAL HEIGHT (FROM 0.06 MM TO 150MM FACE HEIGHT)
 - 150x300 MM STANDARD GRANITE K15-T1(H/S) KERBS WITH 150MM FACE HEIGHT
 - STANDARD CARRIAGEWAY ASPHALT MATERIAL ON BUILD-OUT AND CENTRAL ISLAND
 - NEW DYL TO BE INTRODUCED
 - PARKING BAYS TO BE LOST



REV	DATE	REVISION DESCRIPTION / DETAILS	DRN BY	CHKD BY	APPRD BY

southwark.gov.uk
 160 TOOLEY STREET LONDON SE1P 5LX

PROJECT: NEWINGTON TRIAL WIDTH RESTRICTION

TITLE: PENTON PLACE

STATUS:	FINAL	DRAWN:	SC
SCALE:	1:500	DESIGNED:	SK
DRAWING NO:	LBS/18302/OD/WR/01	CHECKED:	SK
DATE DRAWN:	AUG 2018	APPROVED:	RB
DATE ISSUED:	JAN 2019	REV:	A

SCALE:: 1:500

SCALE:: 1:250

S:\TRANSPORT PROJECTS\PROJECTS\18302 - NEWINGTON TRIAL WIDTH RESTRICTIONS - OUTLINE DESIGN\DRAWINGS\NEWINGTON TRIAL WIDTH RESTRICTIONS - PENTON PLACE, MANOR PLACE & COOKS ROAD.DWG



THE COUNCIL OF THE LONDON BOROUGH OF SOUTHWARK

TRAFFIC MANAGEMENT ORDER

2019 No. 025

The London Borough of Southwark (Width restriction) (Newington trials)
Experimental Traffic Order 2019

Made: 24 January 2019

Coming into force: 11 March 2019

Expires: 10 September 2020

The council of the London Borough of Southwark, after consulting the Commissioner of Police of the Metropolis, in exercise of the powers conferred by sections 9 and 10 of the Road Traffic Regulation Act 1984^a, as amended, and of all other powers thereunto enabling, hereby make the following Order:

Citation and commencement

- 1.1 This Order may be cited as The London Borough of Southwark (Width restriction) (Newington trials) Experimental Traffic Order 2019 and shall come into force on 11 March 2019, and expires on 10 September 2020.

Interpretation

- 2.1 In this Order:-

"council" means the council of the London Borough of Southwark;

causing includes permitting;

"enactment" means any enactment, whether public general or local, and includes any order, bye-law, rule, regulation, scheme or other instrument having effect by virtue of an enactment;

- 2.2 Any reference in this Order to any enactment shall be construed as a reference to that enactment as amended, applied, consolidated, re-enacted by or as having effect by virtue of any subsequent enactment.

^a 1984 c.27

Width Restrictions

Cooks Road

3.1 No person shall cause any vehicle of more than 2 metres (6 feet 6 inches) in overall width (including any load carried thereon) to enter into or proceed in that length of Cooks Road which lies between a point 21.5 metres north-west of the north-western kerb-line of Forsyth Gardens (north-east to south-west arm) and a point 29 metres south-east of the south-eastern kerb-line of Otto Street.

Manor Place

3.2 No person shall cause any vehicle of more than 2 metres (6 feet 6 inches) in overall width (including any load carried thereon) to enter into or proceed in that length of Manor Place which lies between a point 22.8 metres north-east of the north-eastern kerb-line build-out of Braganza Street and a point 4.5 metres south-west of the common boundary of Nos. 175 and 177 Manor Place.

Penton Place

3.3 No person shall cause any vehicle of more than 2 metres (6 feet 6 inches) in overall width (including any load carried thereon) to enter into or proceed in that length of Penton Place which lies between a point 18 metres south-east of the south-eastern kerb-line of Alberta Street and a point 39.5 metres north-west of the north-western kerb-line of Iliffe Street.

Power to modify or suspend this Order

4.1 In pursuance of section 10(2) of the Road Traffic Regulation Act 1984, the Parking and Network Management Business Unit Manager (or such other officer of the council as holds the post of Traffic Manager as defined in section 17 of the Traffic Management Act 2004^b) may, if it appears to that officer essential in the interests of the expeditious, convenient and safe movement of traffic, or of the provision of suitable and adequate parking facilities on the highway, or for preserving or improving the amenities of the area through which any road affected by this Order runs, modify or suspend any provision of this Order, save that no modification shall make an addition.

Dated this twenty-fourth day of January 2019



NICKY COSTIN
Parking and Network Management Business Unit Manager
Regulatory Services

^b 2004 c.18

EXPLANATORY NOTE
(This note is not part of the Order)

This Order, by way of an experiment, introduces new width restrictions in Cooks Road, in Manor Place and in Penton Place, in the London Borough of Southwark, in order to restrict the passage of unessential heavy goods vehicle traffic in the area and to reduce the insecurity of vulnerable road users, such as pedestrians and cyclists.



THE COUNCIL OF THE LONDON BOROUGH OF SOUTHWARK

TRAFFIC MANAGEMENT ORDER

2019 No. 026

The London Borough of Southwark (Parking places) (CPZ 'E') (No. 2)
Experimental Traffic Order 2019

Made: 24 January 2019

Coming into force: 11 March 2019

Expires: 10 September 2020

The council of the London Borough of Southwark, after consulting the Commissioner of Police of the Metropolis, in exercise of the powers conferred by sections 9 and 10 of the Road Traffic Regulation Act 1984^a, as amended, and of all other powers thereunto enabling, hereby make the following Order:

Citation, commencement and expiry

- 1.1 This Order may be cited as the London Borough of Southwark (Parking places) (CPZ 'E') (No. 2) Experimental Traffic Order 2019, shall come into force on 11 March 2019 and expires on 10 September 2020.

Interpretation

- 2.1 In this Order:-

"council" means the council of the London Borough of Southwark;

"enactment" means any enactment, whether public general or local, and includes any order, bye-law, rule, regulation, scheme or other instrument having effect by virtue of an enactment; and

"the Order of 2010" means the London Borough of Southwark (Parking places) (CPZ 'E') Order 2010^b.

- 2.2 Any reference in this Order to any enactment shall be construed as a reference to that enactment as amended, applied, consolidated, re-enacted by or as having effect by virtue of any subsequent enactment.
- 2.3 Unless the context otherwise requires, any expression used in this Order which is also used in the Order of 2010 shall have the same meaning as in that Order.

^a 1984 c.27

^b LBS 2010/065

Suspension of existing parking places

- 3.1 While this Order remains in force and without prejudice to the validity of anything done or to any liability incurred in respect of any act or omission before the coming into force of this Order, the designation by the Order of 2010 of the parking place numbered 132 in Schedule 1 therein, is hereby suspended.

Designation of parking places and application of the Order of 2010 thereto

- 4.1 Each area on a highway comprising the length of carriageway of a street specified in column (2) of the Schedule to this Order and bounded on one side of that length by the edge of the carriageway, and having a width throughout of 2 metres, is designated as a parking place.
- 4.2 The provisions of the Order of 2010 (other than Articles 3 and 15) shall apply to each area designated as a parking place by this Order as if in those provisions any reference to a designated parking place or to a parking place shall include a reference to the area designated as a parking place by this Order and as if any reference to Schedule 1 to the Order of 2010 included a reference to the Schedule to this Order.

Placing of traffic signs etc.

- 5.1 The council shall:-
- (a) place and maintain traffic signs indicating the limits of each parking place referred to in the Schedule to this Order;
 - (b) place and maintain in or in the vicinity of each parking place referred to in the Schedule to this Order traffic signs indicating that such parking places may be used during the permitted hours for the leaving only of the vehicles specified in Article 4.1 and 4.2 as the case may be, of the Order of 2010; and
 - (c) carry out such other works as is reasonably required for the purposes of the satisfactory operation of a parking place.

Power to modify or suspend this Order

- 6.1 In pursuance of section 10(2) of the Road Traffic Regulation Act 1984, the Parking and network management business unit manager (or such other officer of the council as holds the post of Traffic Manager as defined in section 17 of the Traffic Management Act 2004) may, if it appears to that officer essential in the interests of the expeditious, convenient and safe movement of traffic, or of the provision of suitable and adequate parking facilities on the highway, or for preserving or improving the amenities of the area through which any road affected by this Order runs, modify or suspend any provision of this Order, save that no modification shall make an addition.

Dated this twenty-fourth day of January 2019



NICKY COSTIN
Parking and Network Management Business Unit Manager
Regulatory Services

SCHEDULE - PERMIT HOLDERS' PARKING PLACES

<i>No. of parking place</i> (1)	<i>Designated parking place</i> (2)	<i>Permitted hours</i> (3)
X8.	PENTON PLACE the south-west side, from a point 6 metres south-east of the south-eastern kerb-line of Alberta Street south-eastward for a distance of 4.5 metres.	8.30 am to 6.30 pm Monday to Friday

EXPLANATORY NOTE

(This note is not part of the Order)

This Order, by way of an experiment, reduces an existing permit holders' parking place so as to accommodate the trial of a width restriction in Penton Place, in the London Borough of Southwark.



THE COUNCIL OF THE LONDON BOROUGH OF SOUTHWARK

TRAFFIC MANAGEMENT ORDER

2019 No. 027

The London Borough of Southwark (Parking places) (CPZ 'J') (No. 2)
Experimental Traffic Order 2019

Made: 24 January 2019

Coming into force: 11 March 2019

Expires: 10 September 2020

The council of the London Borough of Southwark, after consulting the Commissioner of Police of the Metropolis, in exercise of the powers conferred by sections 9 and 10 of the Road Traffic Regulation Act 1984^a, as amended, and of all other powers thereunto enabling, hereby make the following Order:

Citation, commencement and expiry

- 1.1 This Order may be cited as the London Borough of Southwark (Parking places) (CPZ 'J') (No. 2) Experimental Traffic Order 2019, shall come into force on 11 March 2019 and expires on 10 September 2020.

Interpretation

- 2.1 In this Order:

“council” means the council of the London Borough of Southwark;

“enactment” means any enactment, whether public general or local, and includes any order, bye-law, rule, regulation, scheme or other instrument having effect by virtue of an enactment; and

“the Order of 2011” means The London Borough of Southwark (Parking places) (CPZ 'J') (No. 1) Order 2011^b.

- 2.2 Any reference in this Order to any enactment shall be construed as a reference to that enactment as amended, applied, consolidated, re-enacted by or as having effect by virtue of any subsequent enactment.
- 2.3 Unless the context otherwise requires, any expression used in this Order which is also used in the Order of 2011 shall have the same meaning as in that Order.

^a 1984 c.27

^b LBS 2011/058

Suspension of existing parking places

- 3.1 While this Order remains in force and without prejudice to the validity of anything done, or to any liability incurred in respect of any act or omission before the coming into force of this Order, the designation by the Order of 2011 of the parking place numbered 15 in Schedule 1 therein is hereby suspended.

Designation of parking place and application of the Order of 2011 thereto

- 4.1 Each area on a highway comprising the length of carriageway of a street specified in column (2) of the Schedule to this Order and bounded on one side of that length by the edge of the carriageway, is designated as a parking place.
- 4.2 The provisions of the Order of 2011 (other than Articles 3 and 15) shall apply to each area described in the Schedule to this Order as if in those provisions any reference to a parking place shall include a reference to an area designated as a parking place by this Order and as if any reference to Schedule 1 to the Order of 2011 included a reference to the Schedule to this Order.

Placing of traffic signs, etc.

- 5.1 The council shall:-
- (a) place and maintain traffic signs indicating the limits of each parking place referred to in the Schedule to this Order;
 - (b) place and maintain in or in the vicinity of each parking place referred to the Schedule to this Order traffic signs indicating that such a parking place may be used during the permitted hours for the leaving only of the vehicles specified in Article 4.1 and 4.2 of the Order of 2011; and
 - (c) carry out such other works as is reasonably required for the purposes of the satisfactory operation of a parking place.

Power to modify or suspend this Order

- 6.1 In pursuance of section 10(2) of the Road Traffic Regulation Act 1984, the Parking and network management business unit manager (or such other officer of the council as holds the post of Traffic Manager as defined in section 17 of the Traffic Management Act 2004) may, if it appears to that officer essential in the interests of the expeditious, convenient and safe movement of traffic, or of the provision of suitable and adequate parking facilities on the highway, or for preserving or improving the amenities of the area through which any road affected by this Order runs, modify or suspend any provision of this Order, save that no modification shall make an addition.

Dated this twenty-fourth day of January 2019



NICKY COSTIN
Parking and Network Management Business Unit Manager
Regulatory Services

SCHEDULE - PERMIT HOLDERS' PARKING PLACES

<i>No. of parking place</i> (1)	<i>Designated parking place</i> (2)	<i>Permitted hours</i> (3)
X4.	<p>COOKS ROAD</p> <p>the south-west side, from a point 4 metres south-east of the south-eastern kerb-line of Otto Street south-eastward for a distance of 24 metres.</p>	<p>8.30 am to 6.30 pm</p> <p>Monday to Friday</p>
X5.	<p>COOKS ROAD</p> <p>the south-west side, from a point 7.8 metres north-west of the north-western kerb-line of Forsyth Gardens (north-east to south-west arm) north-eastward for a distance of 12.5 metres.</p>	<p>8.30 am to 6.30 pm</p> <p>Monday to Friday</p>

EXPLANATORY NOTE

(This note is not part of the Order)

This Order, by way of an experiment, splits an existing permit holders' parking place so as to accommodate the trial of a width restriction in Cooks Road, in the London Borough of Southwark.



THE COUNCIL OF THE LONDON BOROUGH OF SOUTHWARK

TRAFFIC MANAGEMENT ORDER

2019 No. 028

The London Borough of Southwark (Waiting and loading restrictions) (Amendment No. 4)
Experimental Traffic Order 2019

Made: 24 January 2019

Coming into force: 11 March 2019

Expires: 10 September 2020

The council of the London Borough of Southwark, after consulting the Commissioner of Police of the Metropolis, in exercise of the powers conferred by sections 6, 9 and 10 of the Road Traffic Regulation Act 1984^a, as amended, and of all other powers thereunto enabling, hereby make the following Order:

Citation, commencement and expiry

- 1.1 This Order may be cited as The London Borough of Southwark (Waiting and loading restrictions) (Amendment No. 4) Experimental Traffic Order 2019, shall come into force on 11 March 2019, and expires on 10 September 2020.

Interpretation

- 2.1 In this Order:-

“council” means the council of the London Borough of Southwark;

“enactment” means any enactment, whether public general or local, and includes any order, bye-law, rule, regulation, scheme or other instrument having effect by virtue of an enactment; and

“the Order of 2015” means the London Borough of Southwark (Waiting and loading restrictions) Consolidation Order 2015^b - as amended.

- 2.2 Any reference in this Order to any enactment shall be construed as a reference to that enactment as amended, applied, consolidated, re-enacted by or as having effect by virtue of any subsequent enactment.
- 2.3 Unless the context otherwise requires, any expression used in this Order which is also used in the Order of 2015 shall have the same meaning as in that Order.

^a 1984 c.27

^b LBS 2015/082

Amendment or variation of existing Orders

- 3.1 While this Order remains in force, and without prejudice to the validity of anything done, or to any liability incurred in respect of any act or omission before the coming into force of this Order:- the Order of 2015 shall have effect as though for the items numbered 229, 634 and 771 in Schedule 1 to that Order there were substituted the items numbered X229, X634 and X771 and set out in columns 1, 2 and 3 of the Schedule to this Order.

Power to modify or suspend this Order

- 4.1 In pursuance of section 10(2) of the Road Traffic Regulation Act 1984, the Parking and Network Management Business Unit Manager (or such other officer of the council as holds the post of Traffic Manager as defined in section 17 of the Traffic Management Act 2004^c) may, if it appears to that officer essential in the interests of the expeditious, convenient and safe movement of traffic, or of the provision of suitable and adequate parking facilities on the highway, or for preserving or improving the amenities of the area through which any road affected by this Order runs, modify or suspend any provision of this Order, save that no modification shall make an addition.

Dated this twenty-fourth day of January 2019



NICKY COSTIN
Parking and Network Management Business Unit Manager
Regulatory Services

^c 2004 c.18

SCHEDULE – WAITING RESTRICTIONS

<i>Item No. (1)</i>	<i>Street (2)</i>	<i>Prescribed hours (3)</i>
X229.	COOKS ROAD	
	(a) the north-east side	
	(i) between its junction with Kennington Park Place and a point 18 metres south-east of the south-eastern kerb-line of Fleming Road;	8.30 am to 6.30 pm Monday to Friday
	(ii) between a point 23.5 metres north-west of the north-western kerb-line of Forsyth Gardens and a point 5 metres south-east of the south-eastern kerb-line of Forsyth Gardens;	At any time
	(iii) between a point 5 metres south-east of the south-eastern kerb-line of Forsyth Gardens and a point 8 metres north-west of the north-western kerb-line of Lorrimore Road;	8.30 am to 6.30 pm Monday to Friday
	(iv) between a point 8 metres north-west of the north-western kerb-line of Lorrimore Road and a point 10 metres south-east of the south-eastern kerb-line of Lorrimore Road;	At any time
	(v) between a point 10 metres south-east of the south-eastern kerb-line of Lorrimore Road and a point 12 metres north-west of the north-western kerb-line of Hillingdon Street;	8.30 am to 6.30 pm Monday to Friday
	(vi) between a point 12 metres north-west of the north-western kerb-line of Hillingdon Street and that kerb-line;	At any time
	(b) the south-west side	
	(i) between its junction with Kennington Park Place and a point 5 metres north-west of the north-western kerb-line of Hillingdon Street;	8.30 am to 6.30 pm Monday to Friday
	(ii) between a point 5 metres north-west of the north-western kerb-line of Hillingdon Street and that kerb-line.	At any time
X634.	MANOR PLACE	
	(a) the north-west side	
	(i) between the south-western kerb-line of Walworth Road and a point 25 metres south-west of that kerb-line;	At any time
	(ii) between a point 5.5 metres north-east of the north-eastern kerb-line of Crampton Street and a point 5 metres south-west of the south-western kerb-line of Crampton Street;	At any time
	(iii) between a point 1.2 metres north-east of the common	At any time

SCHEDULE – WAITING RESTRICTIONS

Item No. (1)	Street (2)	Prescribed hours (3)
	boundary of Nos. 150 and 152 Manor Place and the north-eastern kerb-line of Berryfield Road;	
	(iv) between a point opposite the common boundary of Nos. 171 and 173 Manor Place and a point opposite the south-western kerb-line of the access road off Manor Place leading to Pasley Park (adjacent to No. 179 Manor Place);	At any time
	(b) the south-east side	
	(i) between the south-western kerb-line of Walworth Road and a point 25 metres south-west of that kerb-line.	At any time
	(ii) between the common boundary of Nos. 11 and 13 Manor Place and a point 7.5 metres south-west of the south-western kerb-line of Occupation Road.	At any time
	(iii) between a point 1.4 metres north-east of the south-westernmost wall of No. 33 Manor Place and a point 24 metres south-west of the south-western kerb-line build-out of Penton Place;	At any time
	(iv) between a point 44 metres south-west of the south-western kerb-line build-out of Penton Place and a point 13 metres north-east of the south-western wall of Nos. 109-127 Manor Place;	At any time
	(v) between the eastern kerb-line of Chapter Road and the common boundary of Nos. 171 and 173 Manor Place;	At any time
	(c) the access road off Manor Place leading to Pasley Park (adjacent to No. 179 Manor Place), the south-west side, between the south-eastern kerb-line of Manor Place and a point 11.5 metres south-east of that kerb-line;	At any time
	(d) so much else as does not lie within those lengths of street specified in sub-paragraphs (a), (b) and (c) above.	8.30 am to 6.30 pm Monday to Friday
X771.	PENTON PLACE	
	(a) the north-east side	
	(i) between a point 10.5 metres south-east of the south-eastern kerb-line of Kennington Park Road and a point 29 metres south-east of that kerb-line;	8.30 am to 6.30 pm Monday to Friday
	(ii) between a point 29 metres south-east of the south-eastern kerb-line of Kennington Park Road and a point 30.5 metres north-west of the north-western wall of Nos. 2/10/12 Canterbury Place;	At any time
	(iii) between a point 30.5 metres north-west of the north-western wall of Nos. 2/10/12 Canterbury Place and a	8.30 am to 6.30 pm Monday to Friday

SCHEDULE – WAITING RESTRICTIONS

<i>Item No. (1)</i>	<i>Street (2)</i>	<i>Prescribed hours (3)</i>
	point 8.5 metres north-west of the north-western wall of Nos. 2/10/12 Canterbury Place;	
(iv)	between the north-western wall of Nos. 2/10/12 Canterbury Place and a point 10 metres south-east of the south-eastern kerb-line of Iliffe Street;	At any time
(v)	between a point 10 metres south-east of the south-eastern kerb-line of Iliffe Street and a point 4.5 metres north-west of the north-western kerb-line of Amelia Street;	8.30 am to 6.30 pm Monday to Friday
(vi)	between a point 4.5 metres north-west of the north-western kerb-line of Amelia Street and a point 14.5 metres south-east of the south-eastern kerb-line of Amelia Street;	At any time
(vii)	between a point 14.5 metres south-east of the south-eastern kerb-line of Amelia Street and a point 3.5 metres south-east of the common boundary of Nos. 83 and 85 Penton Place;	8.30 am to 6.30 pm Monday to Friday
(viii)	between a point 3.5 metres south-east of the common boundary of Nos. 83 and 85 Penton Place and a point 11.5 metres south-east of the south-eastern kerb-line of Manor Place;	At any time
(ix)	between a point 11.5 metres south-east of the south-eastern kerb-line of Manor Place and a point 9 metres north-west of the north-western kerb-line of Penrose Street;	8.30 am to 6.30 pm Monday to Friday
(x)	between the north-western kerb-line of Penrose Street and a point 9 metres north-west of that kerb-line;	At any time
(b)	the south-west side	
(i)	between a point 9.5 metres south-east of the south-eastern kerb-line of Kennington Park Road and a point 49 metres north-west of the north-western kerb-line of Alberta Street;	8.30 am to 6.30 pm Monday to Friday
(ii)	between a point 49 metres north-west of the north-western kerb-line of Alberta Street and a point 6 metres south-east of the south-eastern kerb-line of Alberta Street;	At any time
(iii)	between a point 6 metres south-east of the south-eastern kerb-line of Alberta Street and a point 10.5 metres south-east of that kerb-line;	8.30 am to 6.30 pm Monday to Friday
(iv)	between a point 10.5 metres south-east of the south-eastern kerb-line of Alberta Street and the north-western wall of No. 2 Penton Place;	At any time
(v)	between the north-western wall of No. 2 Penton Place	8.30 am to 6.30 pm

SCHEDULE – WAITING RESTRICTIONS

<i>Item No. (1)</i>	<i>Street (2)</i>	<i>Prescribed hours (3)</i>
	and a point 9 metres north-west of the north-western wall of No. 20 Penton Place;	Monday to Friday
(vi)	between a point 9 metres north-west of the north-western wall of No. 20 Penton Place and a point 3 metres north-west of the north-western wall of No. 20 Penton Place;	At any time
(vii)	between a point 30 metres north-west of the north-western wall of No. 20 Penton Place and a point 10 metres north-west of the north-western wall of No. 40 Penton Place;	8.30 am to 6.30 pm Monday to Friday
(viii)	between a point 10 metres north-west of the north-western wall of No. 40 Penton Place and the north-western wall of No. 40 Penton Place;	At any time
(ix)	between the north-western wall of No. 40 Penton Place and a point 21 metres south-east of the south-eastern wall of No. 86 Penton Place;	8.30 am to 6.30 pm Monday to Friday
(x)	between a point 21 metres south-east of the south-eastern wall of No. 86 Penton Place and a point 13 metres south-east of the south-eastern kerb-line of Manor Place;	At any time
(xi)	between a point 13 metres south-east of the south-eastern kerb-line of Manor Place and a point 9 metres north-west of the north-western kerb-line of Penrose Street;	8.30 am to 6.30 pm Monday to Friday
(xii)	between the north-western kerb-line of Penrose Street and a point 7 metres north-west of that kerb-line.	At any time

EXPLANATORY NOTE

(This note is not part of the Order)

This Order, by way of an experiment amends existing waiting restrictions in Cooks Road, Manor Place and Penton Place so as to accommodate the trial of width restrictions within these streets, in the London Borough of Southwark.