

Occupational Therapy Service

	<p>Occupational Therapy can help you make daily tasks easier if:</p>
	<ul style="list-style-type: none">• you are ill
	<ul style="list-style-type: none">• you have a disability.
	<p>You may need help to</p> <ul style="list-style-type: none">• cook for yourself or
	<ul style="list-style-type: none">• use transport to visit your friends or family.
	<ul style="list-style-type: none">• You may find what you need if you go to our Equipment and gadgets page or our Help with mobility page.



How can we help?

We may be able you help if you live in Southwark and you:



- have a physical disability



- are an older person and you find it difficult to do daily tasks



- have a health condition that is getting worse



- look after someone with a disability



- have a mental health issue or a learning disability and you find it difficult to do daily tasks.

	<p>We can carry out an assessment</p>
	<p>to find out if you qualify for support from occupational therapy under the Care Act.</p>
	<p>If you do not qualify, we can provide information and advice.</p>
	<p>How occupational therapy services can help?</p> <p>Occupational therapy can:</p>
	<ul style="list-style-type: none"> • advise you on daily tasks, such as washing
	<ul style="list-style-type: none"> • suggest equipment that could help you with daily tasks, such as getting in and out of the bath.



Some equipment is free.



You could borrow money to buy equipment that costs more.



- make small or large **adaptations** to your home, such as a wheelchair ramp or a stair lift.



- provide information and advice about other services.



- help you fit an alarm or telecare equipment to your home (see our [‘Equipment & gadgets to help you at home’](#) page).



An **assessment** will tell us if telecare can be fitted free of charge.



You may have to pay up to **£5.75** every week to have telecare fitted in your home.



For more information go to our [Paying for your care](#) section.



Helpful equipment

If you qualify for support (see our page '[Can we help with your care and support needs](#)' page) you could get **free** equipment.



Any equipment you get is yours, so you must:

- look after it



- throw it away when you do not need it.



Trained staff in local places such as chemists, can advise you about equipment and show you how to use it.



When you buy equipment, you can get:

- extra features
- different colours.



But this may cost you more at your expense.



Getting equipment on loan

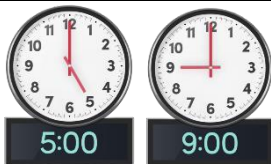
We can loan you equipment to keep you safe and independent.



We will collect the equipment from you when you do not need it any longer.




To repair or replace equipment please call **020 7231 6816**



If you have an urgent repair between 5pm and 9am



please call **020 8573 2871**.

	<p>You cannot get urgent repairs for some electrical equipment.</p>
	<p>Some equipment is repaired on the next working day.</p>
	<p>We will clean and recycle used equipment so that it can be used again.</p>
	<p>To ask for your equipment to be collected, please call 020 7525 3962.</p>
	<p>Adaptations at home</p> <p>At your assessment we will ask you if adaptations to your home such as ramps or grab rails would help you to live independently at home.</p>
	<p>Small adaptations at home</p> <p>These include:</p> <ul style="list-style-type: none"> • handrails or changing the doorsteps
	<ul style="list-style-type: none"> • grab rails near the toilet, bath or shower



- a stair rail to make it easier to use your stairs at home.



Big adaptations at home

These include:

- a ramp to make it easier to enter your home in a wheelchair



- a shower that is easy to use, if you cannot use your bath safely



- a hoist so that your carer can move you



- a stair lift



We may be able to provide other support while a **big adaptation** is being fitted



Sometimes we may give you information and advice about moving into a new home.



Paying for adaptations



The cost depends on:

- the type of adaptation you need



- if you rent or own your own home.



If you are a Southwark Council tenant



The Council will pay for any adaptations to your home.



If you own your home or rent a private home



You can apply for a **Disabled Facilities Grant** of up to **£30,000** to pay for the work.



How much you pay,



will depend on your income and savings.



The council's **Home Improvement Agency** can help you complete a **Disabled Facilities Grant** form.



If you are a Housing Association tenant

We will ask your housing association to carry out the work.



Some housing associations may ask you to apply for a **Disabled Facilities Grant**.

For more information about the [Disabled Facilities Grant](#) go to GOV.UK.



Repairs to adaptations



Council tenants



Call Southwark Council's Contact Centre on
020 7525 2600



For stair lifts or ceiling tract hoists call
020 7525 2600



For out of hours repairs from 5pm to 9am

Call **0800 952 4444**



If your equipment is less than 12 months old call
020 7525 1866



For repairs to lifts from 9am to 5pm to lifts call
020 7525 7745



For emergency repairs to lifts from 5pm to 9am
call **0800 952 4444**



If you are housing association tenant

Most housing associations will repair the adaptations in your home.



Home owners

If you are a home owner, when the adaptation is fitted, it belongs to you.



You will have to pay for any repairs.

	<p>Private tenants</p>
	<p>If you are a private tenant, when the adaptation is fitted, it belongs to you.</p>
	<p>Some landlords may repair your adaptations.</p>
	<p>If they do not agree to, you will have to pay.</p>
	<p>Would you like an occupational therapy assessment?</p>
	<p>If you would like an assessment, please call 020 7525 3324</p>
	<p>Email OPPDContaktteam@southwark.gov.uk</p>
	<p>You can also complete a referral form.</p>



Please note. A lot of people ask for **assessments** so you may wait a long time to hear from us.