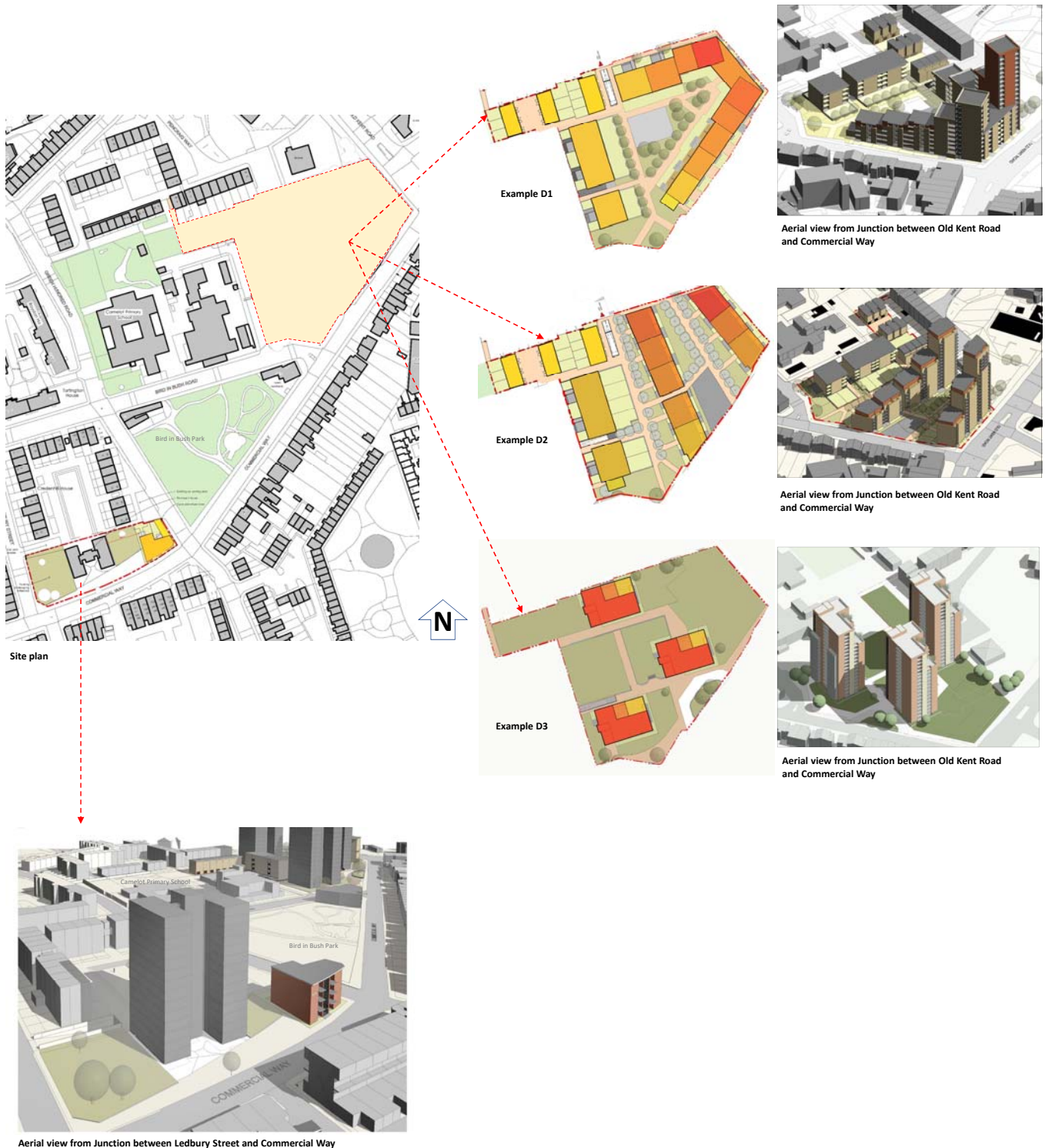


# LEDBURY TOWER OPTION APPRAISAL - option C

**Partial refurbishment / part redevelopment** This option will include the demolition of some of the towers and, for the towers that will remain, they will be refurbished as set out in option B . The towers that are demolished will be replaced with new homes. If a decision is made to demolish some of the tower blocks the details will be worked up with residents. The number of refurbished and new homes at Council rent will at least be the same number of Council homes in the existing towers. **Example 1:** Peterchurch, Sarnsfield, Skenfrith Houses to the Old Kent Road site to be demolished, the site cleared and redeveloped along the lines of Examples in option D.

Bromyard House to be retained and refurbished as per Option B, including the infill.

- Undercroft parking demolished and re-provided as basement level parking
- Sports pitch re-provided
- New landscaping and footpaths throughout



# LEDBURY TOWER OPTION APPRAISAL - option C

**Partial refurbishment / part redevelopment** This option will include the demolition of some of the towers and, for the towers that will remain, they will be refurbished as set out in option B . The towers that are demolished will be replaced with new homes. If a decision is made to demolish some of the tower blocks the details will be worked up with residents. The number of refurbished and new homes at Council rent will at least be the same number of Council homes in the existing towers.

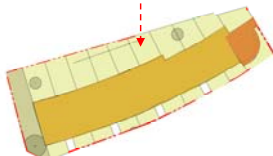
**Example 2:** Peterchurch, Sarnsfield, Skenfrith Houses to the Old Kent Road site to be retained, refurbished and, as per option B, including the infill developments.

Bromyard House to be demolished, the site cleared and redeveloped along the lines of Examples in option D.

- New landscaping and footpaths throughout



Site plan



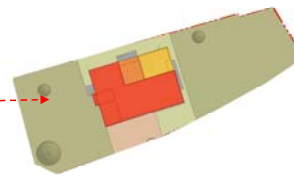
Example D2



Aerial view from Junction between Naylor Road and Commercial Way



Aerial view from Junction between Old Kent Road and Commercial Way



Example D3



Aerial view from Junction between Ledbury Street and Commercial Way

# LEDBURY TOWER OPTION APPRAISAL - option C

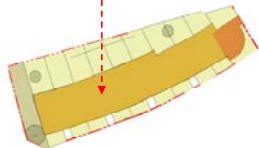
**Partial refurbishment / part redevelopment** This option will include the demolition of some of the towers and, for the towers that will remain, they will be refurbished as set out in option B. The towers that are demolished will be replaced with new homes. If a decision is made to demolish some of the tower blocks the details will be worked up with residents. The number of refurbished and new homes at Council rent will at least be the same number of Council homes in the existing towers.

**Example 3:** Peterchurch, Sarnsfield Houses to the Old Kent Road site to be retained, refurbished and, as per option B, including the infill developments. Skenfrith House to be demolished and a new build as per part of option D2. Bromyard House to be demolished, the site cleared and redeveloped along the lines of Examples in option D.

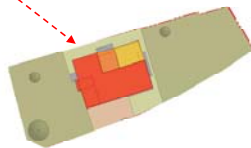
- New landscaping and footpaths throughout



Site plan



Example D2



Example D3



1. Aerial View from the East



2. View from Old Kent Road



Aerial view from Junction between Naylor Road and Commercial Way



Aerial view from Junction between Ledbury Street and Commercial Way