

Public notice

Amelia Street redevelopments

*The London Borough of Southwark (Free parking places) (Disabled persons) (No. *) Order 201**

*The London Borough of Southwark (Parking places) (CPZ 'E') (No. *) Order 201**

*The London Borough of Southwark (Loading bays) Order 201**

*The London Borough of Southwark (Waiting and loading restrictions) (Amendment No. *) Order 201**

1. Southwark Council hereby GIVES NOTICE that it proposes to make the above orders under the powers of the Road Traffic Regulation Act 1984¹.
2. The effect of the orders would be to formalise the below measures in AMELIA STREET:-
 - (a) to extend to 6 metres in length, each bay, and to relocate two existing 'limited stay' disabled persons parking places on the south-east side, south-westward for a distance of 1 metre;
These parking places would operate at any time and may be used for up to 4 hours maximum, no return within 2 hours, by vehicles displaying a valid disabled persons 'blue badge'.
 - (b) to reduce in length an existing pay parking place on the south-east side, so as to accommodate the relocation of the two disabled persons parking places referred to above;
 - (c) to provide a new inset loading bay, 10.4 metres in length, on the north-west side outside Nos. 2-16 Amelia Street in which vehicles may load or unload at any time (max 40 mins, no return within 2 hours); and
 - (d) to amend the existing length of double yellow line waiting restrictions, from the south-west kerb-line of Walworth Road, i) on the south-east side so as to accommodate the relocation of the new disabled persons parking places referred to above, and ii) to accommodate the provision of the new loading bay referred to above.
3. For more information contact Robson Mupani of the council's Highways – Network Development team: telephone 020 7525 4741 or e-mail Highways@southwark.gov.uk
4. Copies of this notice, the proposed orders, a statement of the council's reasons for making this change and plans may be found online at <http://www.southwark.gov.uk/trafficorders> or by scanning the QR code below, paper copies may be obtained from or viewed at Highways, Environment, 3rd floor hub 2, 160 Tooley Street, London SE1 2QH.
5. Anyone wishing to object to or make any other representations regarding the proposal, may use the form labelled '*Parking - Road traffic and highway schemes - responding to statutory consultation notices*' at www.southwark.gov.uk/statutoryconsultationnotices or send a statement in writing to: Traffic Order consultations, Highways, Southwark Council, Environment and Social Regeneration, P.O. Box 64529, London SE1P 5LX or by e-mail to traffic.orders@southwark.gov.uk quoting reference '*TMO1819-011_Amelia Street*' 16 August 2018. Please note that if you wish to object to this proposal you must state the grounds on which your objection is made.
6. Under the requirements of current access to information legislation, any letter or e-mail sent to the Council in response to this Notice may be subject to publication or disclosure, or both, including communication to other persons affected.

Dated 26 July 2018

Nicky Costin

Parking and Network Management Business Unit Manager, Regulatory Services



¹ [1984 c.27](#)

Statement of reasons

Amelia Street redevelopments

*The London Borough of Southwark (Free parking places) (Disabled persons) (No. *) Order 201**

*The London Borough of Southwark (Parking places) (CPZ 'E') (No. *) Order 201**

*The London Borough of Southwark (Loading bays) Order 201**

*The London Borough of Southwark (Waiting and loading restrictions) (Amendment No. *) Order 201**

The redevelopment of 2 – 16 Amelia Street was approved on 30 March 2015 under planning permission no. 14/AP/2709. The development is multi-use; with residential, retail and amenity space.

This scheme will formalise all changes made to the carriageway during the redevelopment of this area including:- the provision of a new inset loading bay on the north-west side outside No. 2 – 16 Amelia Street; and lengths of additional double yellow line waiting restrictions directly either side of this new loading bay. Vehicles may load or unload at any time (max 40 minutes stay, and no return within 2 hours).

The new inset loading bay on the north-west side has made it necessary to re-locate two disabled persons parking places on the opposite (south-east) side of Amelia Street to ensure that road-users are not inhibited when turning or proceeding in this area.

The amendments on the south-east side include:

- the lengthening to 6 metres, per bay, and re-location south-westward of existing disabled persons parking bays;
- the reduction in length of the existing pay parking bays (net loss of two pay parking bays); and
- amendments to the double yellow lines

to allow for the re-location of the disabled persons parking places mentioned above.

Dated 26 July 2018

For more information contact:-

Robson Mupani

Highways – Network Development

020 7525 4741

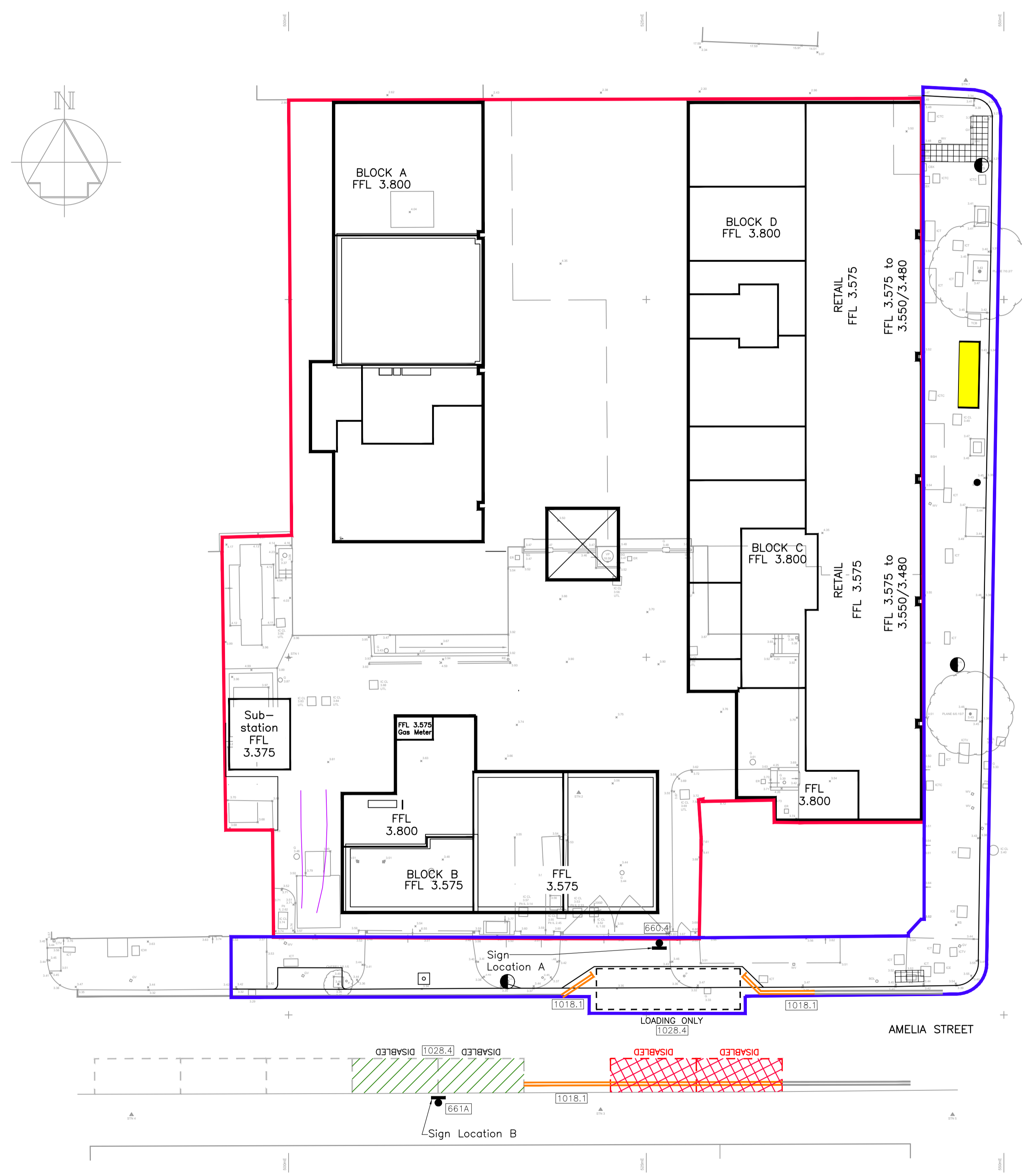
Highways@southwark.gov.uk

LEGEND

- Site Boundary
- Section S278 by Durkan
- Boundary to S278 Works.
- Existing crossover to be reinstated as footway.
- Road Sign (TSRG Ref No. in box)
- Road Markings to remain
- Road Markings to be removed
- Road Markings proposed
- 800x800mm Tree Pit
- Street Lighting Column to be retained
- Existing Disabled Parking Bays to be removed
- Disabled Parking Bays to replace existing Parking Bays

SIGN SCHEDULE

ITEM	SIGN LOCATION A	SIGN LOCATION B
Sign Face Details		
Orientation	Facing South (approx)	Facing North (approx)
Ref	TSRGD Ref 660.4	TSRGD Ref 661A
Description	Goods vehicles loading only At any time Max 40 mins No return within 2 hours	
Size (mm)	tbc	Existing sign
'x' Height (mm)	20	Existing sign
Reflectivity	Class 2	Existing sign
Illumination	None	Existing sign
Horiz Dist from Kerb (mm)	n/a – back of footway	450
Mounting Height (mm)	2100 clear headroom	2100 clear headroom
Post Details		
No. of Posts	1	1
Length (mm)	3000	3000
Diameter/Width (mm)	76x76	76x76
Section	Square	Square
Colour	Black	Black
Post Spacing (mm)	n/a	n/a
Lighting Details		
No. of Lanterns	None	None
Manufacturer	n/a	n/a
Type	n/a	n/a
Foundation Details		
Size (mm)	450x450x500 deep	450x450x500 deep
Other Information		
Image		
Remarks		Relocation of existing sign



General Notes

1. All highway works to be in accordance with The London Borough of Southwark's Street Scape Design Manual. These are comprehensive documents and must be referred to in conjunction with this drawing.
2. Road signs and road markings are to be in accordance with the TSRGD 2003 & TSRGD 2011 (part 2).

Signage-
Refer to road sign schedules for sign details, dimensions, 'X' height, colours, etc.

Road Markings-
Existing road markings to be remarked as required.

PRELIMINARY

- C 24.01.17 Loading bay to Amelia Street amended SB PAJT
- B 09.12.16 TSRGD reference updated and Sign A Description updated following Southwark's comments 25.11.16. BD PAJT
- A 25.05.16 Road Sign Schedule added (previously separate document). Double yellow lines to Amelia Street extend west up to proposed loading bay. All to Southwark's comments 12.04.16 and site meeting 18.05.16. PAJT

REV	DATE	DESCRIPTION	BY	CHK'D



TITLE:
**Section 278
Road Markings & Signs**

PROJECT:
**Amelia Street
Southwark**

SCALE: 1:200@A1 DATE: Mar' 2016 DRAWN: JDW CHK'D: PAJT
DRG NO. 11395-CIV-449 REV. C

Tully De'Ath
consultants
Engineering at its Best

T: 01342 828 000
E: info@tullydeath.com
W: www.tullydeath.com



THE COUNCIL OF THE LONDON BOROUGH OF SOUTHWARK

TRAFFIC MANAGEMENT ORDER

201* No. xxx

The London Borough of Southwark (Parking places) (CPZ 'E') (No. **) Order 201*

Made: xx xxxx 201*

Coming into force: xx xxxx 201*

The council of the London Borough of Southwark, after consulting the Commissioner of Police of the Metropolis, in exercise of the powers conferred by sections 45, 46, 49 and 124 of and Part IV of Schedule 9 to the Road Traffic Regulation Act 1984^a, as amended, and of all other powers thereunto enabling, hereby make the following Order:

Citation and commencement

- 1.1 This Order may be cited as the London Borough of Southwark (Parking places) (CPZ 'E') (No. **) Order 201* and shall come into force on xx xxxx 201*.

Interpretation

- 2.1 In this Order:-

"council" means the council of the London Borough of Southwark;

"enactment" means any enactment, whether public general or local, and includes any order, bye-law, rule, regulation, scheme or other instrument having effect by virtue of an enactment; and

"the Order of 2010" means the London Borough of Southwark (Parking places) (CPZ 'E') Order 2010^a.

- 2.2 Any reference in this Order to any enactment shall be construed as a reference to that enactment as amended, applied, consolidated, re-enacted by or as having effect by virtue of any subsequent enactment.
- 2.3 Unless the context otherwise requires, any expression used in this Order which is also used in the Order of 2010 shall have the same meaning as in that Order.

Revocation

- 3.1 Without prejudice to the validity of anything done or to any liability incurred in respect of any act or omission before the coming into force of this Order, the designation by the Order of 2010 of the parking place numbered 2 in Schedule 3 therein is hereby revoked.

^a LBS 2010/065

Designation of parking places and application of the Order of 2010 thereto

- 4.1 Each area on a highway comprising the length of carriageway of a street specified in column (2) of a Schedule to this Order and bounded on one side of that length by the edge of the carriageway, and having a width of 2 metres throughout, is designated as a parking place.
- 4.2 The provisions of the Order of 2010 (other than Articles 3 and 15) shall apply to the areas described in each Schedule to this Order as if in those provisions any reference to a designated parking place or to a parking place shall include a reference to an area designated as a parking place by this Order and as if any reference to Schedule 3 to the Order of 2010 included a reference to the Schedule to this Order.

Placing of traffic signs, etc.

- 5.1 The council shall:-
- (a) place and maintain traffic signs indicating the limits of each parking place referred to in Schedule 1 or 2 to this Order;
 - (b) place and maintain in or in the vicinity of each parking place referred to in the Schedule 1 or 2 to this Order traffic signs indicating that such parking places may be used during the permitted hours for the leaving only of the vehicles specified in Articles 4.1 and 4.3, as the case may be, of the Order of 2010;
 - (c) carry out such other works as is reasonably required for the purposes of the satisfactory operation of a parking place.

Dated this xxx day of xxxxx 201*

[signature here]

NICKY COSTIN
Parking and Network Management Business Unit Manager
Regulatory Services

SCHEDULE - 'PAY' PARKING PLACE

<i>No. of parking place (1)</i>	<i>Designated parking place (2)</i>	<i>Permitted hours (3)</i>	<i>Maximum parking period (4)</i>	<i>Minimum return interval (5)</i>
**.	AMELIA STREET the south-east side, from a point 41.2 metres south-west of the south-western kerb-line of Walworth Road south-westward for a distance of 16.8 metres.	8.30 am to 6.30 pm Monday to Friday	4 hours	2 hours

EXPLANATORY NOTE

(This note is not part of the Order)

This Order reduces in length an existing pay parking place in Amelia Street in the London Borough of Southwark, so as to accommodate the relocation of disabled persons (blue badge holders') parking places.



THE COUNCIL OF THE LONDON BOROUGH OF SOUTHWARK

TRAFFIC MANAGEMENT ORDER

2018 No. xxx

The London Borough of Southwark (Free parking places) (Disabled persons) (No. **) Order 201*

Made: xxx xxx 2018

Coming into force: xxx xxx 2018

The council of the London Borough of Southwark, after consulting the Commissioner of Police of the Metropolis, in exercise of the powers conferred by sections 6 and 124 of and Part IV of Schedule 9 to the Road Traffic Regulation Act 1984^a, as amended, and of all other powers thereunto enabling, hereby make the following Order:

Citation and commencement

- 1.1 This Order may be cited as the London Borough of Southwark (Free parking places) (Disabled persons) (No. **) Order 201* and shall come into force on xxx xxx 2018.

Interpretation

- 2.1 In this Order:-

"council" means the council of the London Borough of Southwark;

"enactment" means any enactment, whether public general or local, and includes any order, byelaw, rule, regulation, scheme or other instrument having effect by virtue of an enactment;

"the Order of 2013" means The London Borough of Southwark (Free parking places) (Disabled persons) (No. 1) Order 2013^b.

- 2.2 Any reference in this Order to any enactment shall be construed as a reference to that enactment as amended, applied, consolidated, re-enacted by or as having effect by virtue of any subsequent enactment.
- 2.3 Unless the context otherwise requires, any expression used in this Order which is also used in the Order of 2013 shall have the same meaning as in that Order.

Designation of parking place and application of the Order of 2013 thereto

- 3.1 Each area on a highway comprising the length of carriageway of a street specified in column 2 of the Schedule to this Order is designated as a parking place.
- 3.2 The provisions of the Order of 2013 (other than Articles 3.1 and 14.1) shall apply to each area described in the Schedule to this Order as if in those provisions any reference to a parking place shall include a reference to each area designated as a parking place by this Order and as if any reference to Schedule 2 to the Order of 2013 included a reference to the Schedule to this Order.

^a 1984 c.27

^b LBS 2013/059

Placing of traffic signs etc.

4.1 The council shall:-

- (a) place and maintain traffic signs indicating the limits of the parking place referred to in the Schedule to this Order;
- (b) place and maintain in or in the vicinity of each parking place referred to in the Schedule to this Order traffic signs indicating that such a parking place may be used during the permitted hours for the leaving only of the vehicles specified in Article 4.1 of the Order of 2013; and
- (c) carry out such other works as is reasonably required for the purposes of the satisfactory operation of a parking place.

Dated this xx day of xxxxx 2018



NICKY COSTIN
Parking and Network Management Business Unit Manager
Regulatory Services

SCHEDULE - LIMITED STAY DISABLED PERSONS PARKING PLACE

<i>No. of parking place</i>	<i>Designated parking place</i>	<i>Permitted hours</i>	<i>Maximum parking period</i>	<i>Minimum return interval</i>
(1)	(2)	(3)	(4)	(5)
**.	AMELIA STREET the south-east side, from a point 22.8 metres south-west of the south-western kerb-line of Walworth Road south-westward for a distance of 12 metres.	At any time	4 hours	2 hours

EXPLANATORY NOTE

(This note is not part of the Order)

This order lengthens – to 6 metres, per bay – and relocates south-westward, two existing limited stay disabled persons parking places in Amelia Street, in the London Borough of Southwark.



THE COUNCIL OF THE LONDON BOROUGH OF SOUTHWARK

TRAFFIC MANAGEMENT ORDER

2018 No. xxx

The London Borough of Southwark (Loading bays) (No. **) Order 201*

Made: xx xxxx 201*

Coming into force: xx xxx 201*

The council of the London Borough of Southwark, after consulting the Commissioner of Police of the Metropolis, in exercise of the powers conferred by sections 6 and 124 of and Part IV of Schedule 9 to the Road Traffic Regulation Act 1984^a, as amended, and of all other powers thereunto enabling, hereby make the following Order:

Citation and commencement

- 1.1 This Order may be cited as The London Borough of Southwark (Loading bays) (No. 14) Order 2018 and shall come into force on 4 June 2018.

Interpretation

- 2.1 In this Order:-

"council" means the council of the London Borough of Southwark;

"enactment" means any enactment, whether public general or local, and includes any order, bye-law, rule, regulation, scheme or other instrument having effect by virtue of an enactment; and

"the Order of 2016" means the London Borough of Southwark (Loading bays) (No. 1) Order 2016^b.

- 2.2 Any reference in this Order to any enactment shall be construed as a reference to that enactment as amended, applied, consolidated, re-enacted by or as having effect by virtue of any subsequent enactment.
- 2.3 Unless the context otherwise requires, any expression used in this Order which is also used in the Order of 2016 shall have the same meaning as in that Order.

^a 1984 c.27

^b LBS 2016/005

Designation of loading bays and application of the Order of 2016 thereto

- 3.1 Each area on a highway comprising the length of carriageway of a street specified in column 2 of the Schedule to this Order and bounded on one side of that length by the edge of the carriageway, is designated as a loading bay.
- 3.2 The provisions of the Order of 2016 (other than Articles 3.1 and 12.1) shall apply to each area designated as a loading bay by this Order as if in those provisions any reference to a loading bay shall include a reference to each area designated as a loading bay by this Order and as if any reference to Schedule 1 to the Order of 2016 included a reference to the Schedule to this Order.

Placing of traffic signs etc.

- 4.1 The council shall:-
- (a) place and maintain traffic signs indicating the limits of each loading bay referred to in the Schedule to this Order;
 - (b) place and maintain in or in the vicinity of each loading bay referred to in the Schedule to this Order, traffic signs indicating that such a loading bay may be used during the permitted hours for the leaving only of the vehicles referred to in Article 4.1 of the Order of 2016; and
 - (c) carry out such other work as is reasonably required for the purposes of the satisfactory operation of a loading bay.

Dated this xxx day of xx 201*



NICKY COSTIN
Parking and Network Management Business Unit Manager
Regulatory Services

SCHEDULE - LOADING BAYS

<i>No. of loading bay (1)</i>	<i>Designated loading bay (2)</i>	<i>Permitted hours (3)</i>	<i>Maximum loading period (4)</i>	<i>Minimum return interval (5)</i>
***.	<p>AMELIA STREET</p> <p>the north-west side, from a point 20.5 metres south-west of the south-western kerb-line of Walworth Road south-westward for a distance of 10.4 metres.</p>	At any time	40 minutes	2 hours

EXPLANATORY NOTE

(This note is not part of the Order)

This Order introduces a new inset loading bay in Amelia Street, in London Borough of Southwark.



THE COUNCIL OF THE LONDON BOROUGH OF SOUTHWARK

TRAFFIC MANAGEMENT ORDER

2018 No. xxx

The London Borough of Southwark (Waiting and loading restrictions)
(Amendment No. **) Order 201*

Made: xx xxxx 201*

Coming into force: xx xxx 201*

The council of the London Borough of Southwark, after consulting the Commissioner of Police of the Metropolis, in exercise of the powers conferred by sections 6 and 124 of and Part IV of Schedule 9 to the Road Traffic Regulation Act 1984^a, as amended, and of all other powers thereunto enabling, hereby make the following Order:

Citation and commencement

- 1.1 This Order may be cited as the London Borough of Southwark (Waiting and loading restrictions) (Amendment No. 54) Order 2018 and shall come into force on 4 June 2018.

Interpretation

- 2.1 In this Order:-

"council" means the council of the London Borough of Southwark;

"enactment" means any enactment, whether public general or local, and includes any order, bye-law, rule, regulation, scheme or other instrument having effect by virtue of an enactment; and

"the Order of 2015" means the London Borough of Southwark (Waiting and loading restrictions) Consolidation Order 2015^b - as amended.

- 2.2 Any reference in this Order to any enactment shall be construed as a reference to that enactment as amended, applied, consolidated, re-enacted by or as having effect by virtue of any subsequent enactment.
- 2.3 Unless the context otherwise requires, any expression used in this Order which is also used in the Order of 2015 shall have the same meaning as in that Order.

^a 1984 c.27

^b LBS 2015/082

Amendment of the Order of 2015

- 3.1 Without prejudice to the validity of anything done, or to any liability incurred in respect of any act or omission before the coming into force of this Order, the Order of 2015 shall have effect as though for the item numbered 29 in Schedule 1 to that Order there were substituted the item similarly numbered and set out in columns 1, 2 and 3 of the Schedule to this Order.

Dated this xxx day of xxx 2018

A handwritten signature in black ink, appearing to read "Nicky Costin". The signature is written in a cursive, slightly slanted style.

NICKY COSTIN
Parking and Network Management Business Unit Manager
Regulatory Services

SCHEDULE – WAITING RESTRICTIONS (SUBSTITUTION)

<i>Item No. (1)</i>	<i>Street (2)</i>	<i>Prescribed hours (3)</i>
29.	AMELIA STREET	
	(a) the north-west side	
	(i) between the south-western kerb-line of Walworth Road and a point 20.5 metres south-west of that kerb-line;	At any time
	(ii) between a point 31 metres south-west of the south-western kerb-line of Walworth Road and a point 34 metres south-west of that kerb-line;	At any time
	(iii) between a point 23 metres south-east of the north-eastern kerb-line of Robert Dashwood Way and a point 30 metres north-east of the north-eastern kerb-line of Crampton Street;	At any time
	(iv) between a point 5 metres north-east of the north-eastern kerb-line of Crampton Street and a point 6 metres south-west of the south-western kerb-line of Crampton Street;	At any time
	(v) between a point 8 metres north-east of the north-eastern kerb-line of Penton Place and the north-eastern kerb-line of Penton Place;	At any time
	(b) the south-east side	
	(i) between the south-western kerb-line of Walworth Road and a point 22.8 metres south-west of that kerb-line;	At any time
	(ii) between a point 58 metres south-west of the south-western kerb-line of Walworth Road and a point 49 metres north-east of the north-eastern kerb-line of Crampton Street;	At any time
	(iii) between a point 36 metres north-east of the north-eastern kerb-line of Crampton Street and a point 6 metres south-west of the south-western kerb-line of Crampton Street;	At any time
	(iv) between a point 8 metres north-east of the north-eastern kerb-line of Penton Place and the north-eastern kerb-line of Penton Place;	At any time
	(c) so much else as does not lie within those lengths of streets specified in sub-paragraphs (a) and (b) above.	8.30 am to 6.30 pm Monday to Friday

EXPLANATORY NOTE

(This note is not part of the Order)

This Order, amends the existing lengths of 'at any time' waiting restriction in Amelia Street, in the London Borough of Southwark.