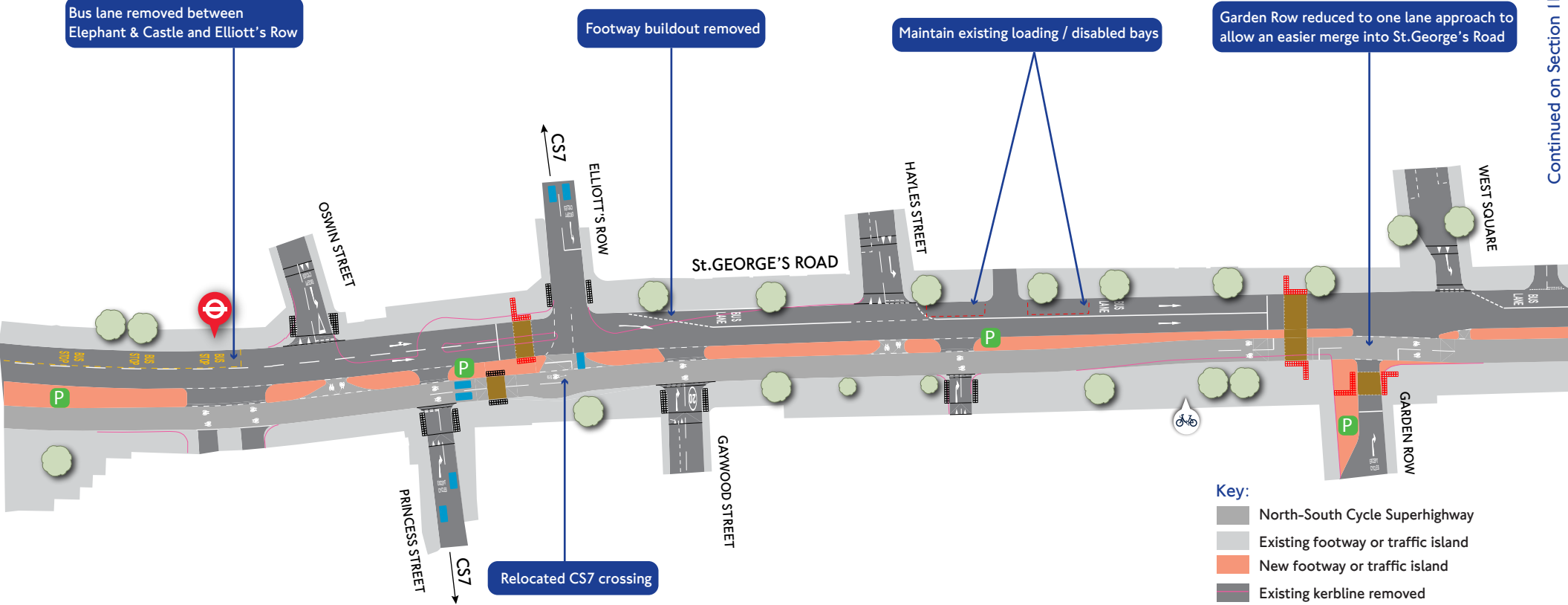


# North-South Cycle Superhighway Section 1a – St. George’s Road



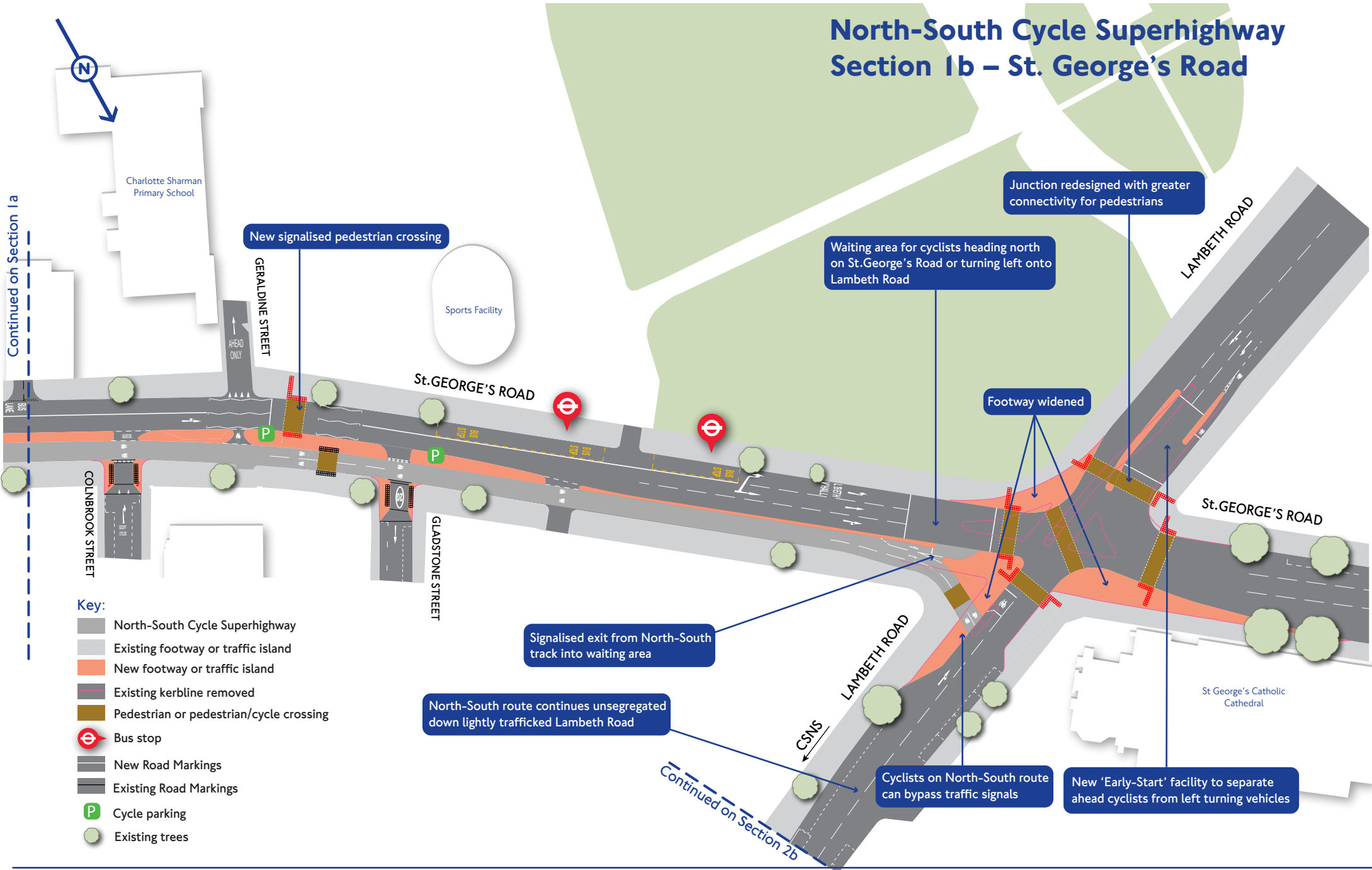
Refer to Elephant & Castle northern roundabout consultation

Continued on Section 1b



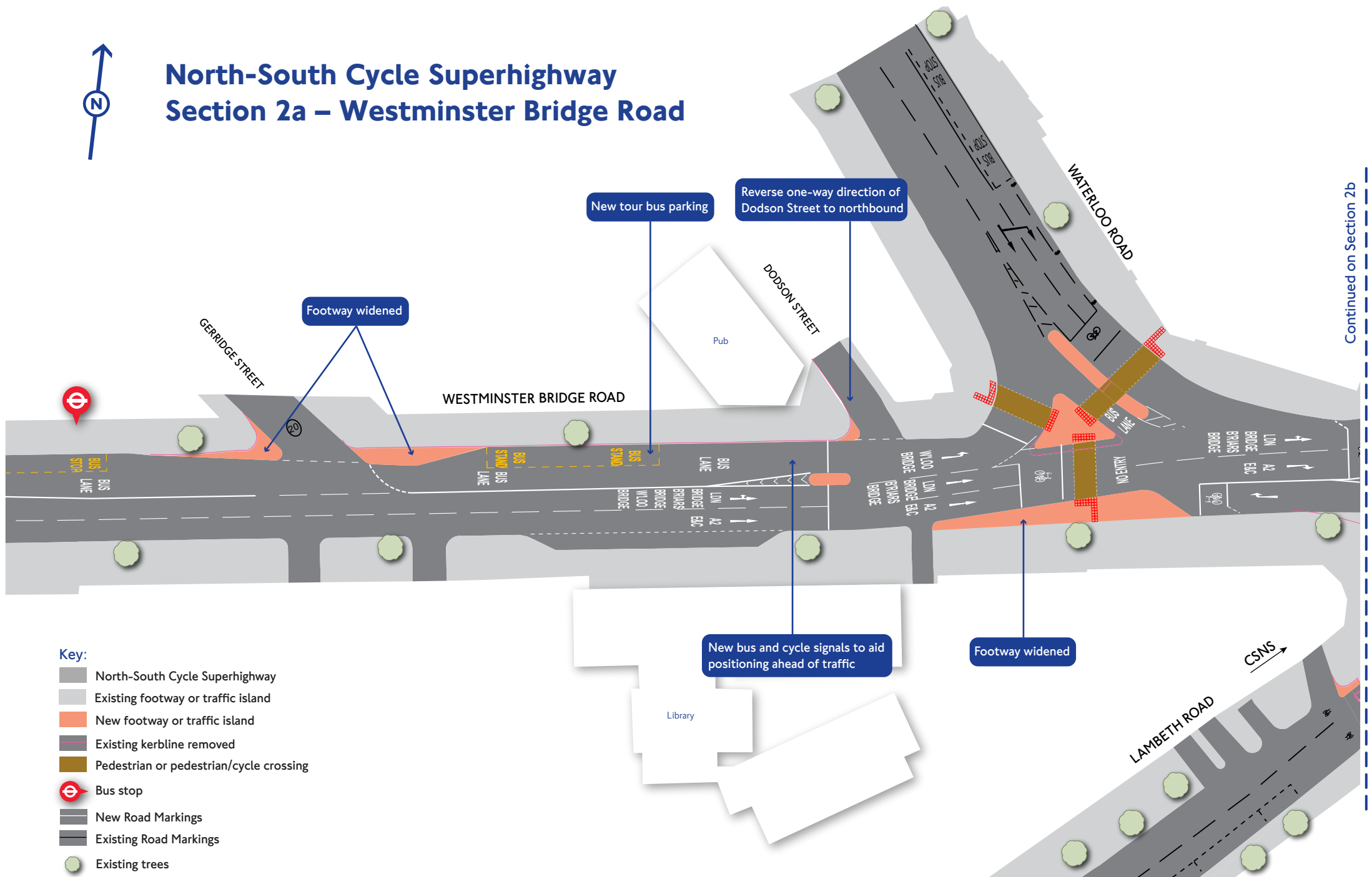
- Key:**
- North-South Cycle Superhighway
  - Existing footway or traffic island
  - New footway or traffic island
  - Existing kerbline removed
  - Pedestrian or pedestrian/cycle crossing
  - Barclays Cycle Hire docking station
  - Bus stop
  - New Road Markings
  - Existing Road Markings
  - Cycle parking
  - Existing trees

# North-South Cycle Superhighway Section 1b – St. George's Road





# North-South Cycle Superhighway Section 2a – Westminster Bridge Road



- Key:**
- North-South Cycle Superhighway
  - Existing footway or traffic island
  - New footway or traffic island
  - Existing kerbline removed
  - Pedestrian or pedestrian/cycle crossing
  - Bus stop
  - New Road Markings
  - Existing Road Markings
  - Existing trees

Continued on Section 2b

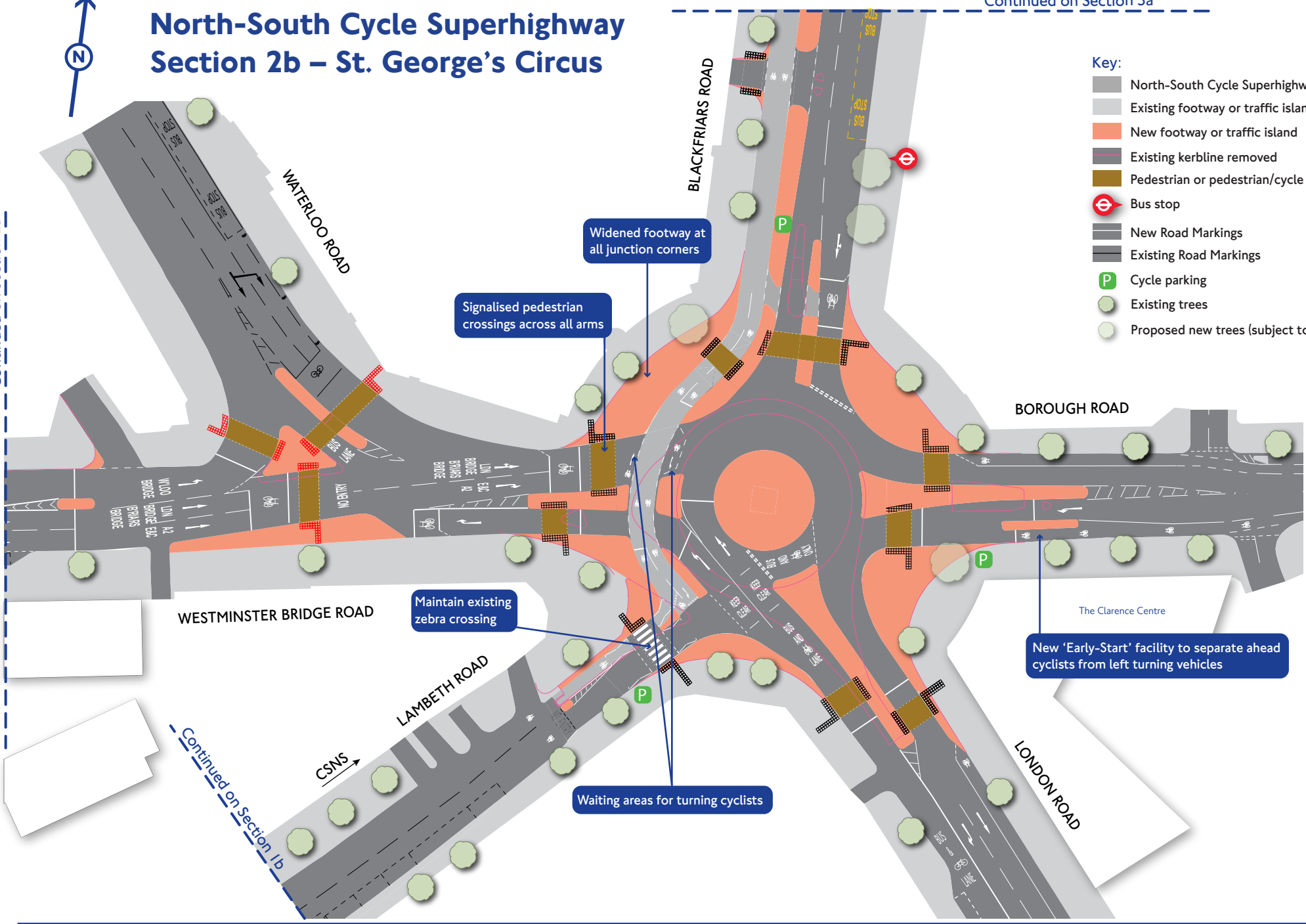
# North-South Cycle Superhighway Section 2b – St. George's Circus



Continued on Section 3a

- Key:**
- North-South Cycle Superhighway
  - Existing footway or traffic island
  - New footway or traffic island
  - Existing kerbline removed
  - Pedestrian or pedestrian/cycle crossing
  - ⊖ Bus stop
  - New Road Markings
  - Existing Road Markings
  - P Cycle parking
  - Existing trees
  - Proposed new trees (subject to further investigations)

Continued on Section 2a



Continued on Section 1b

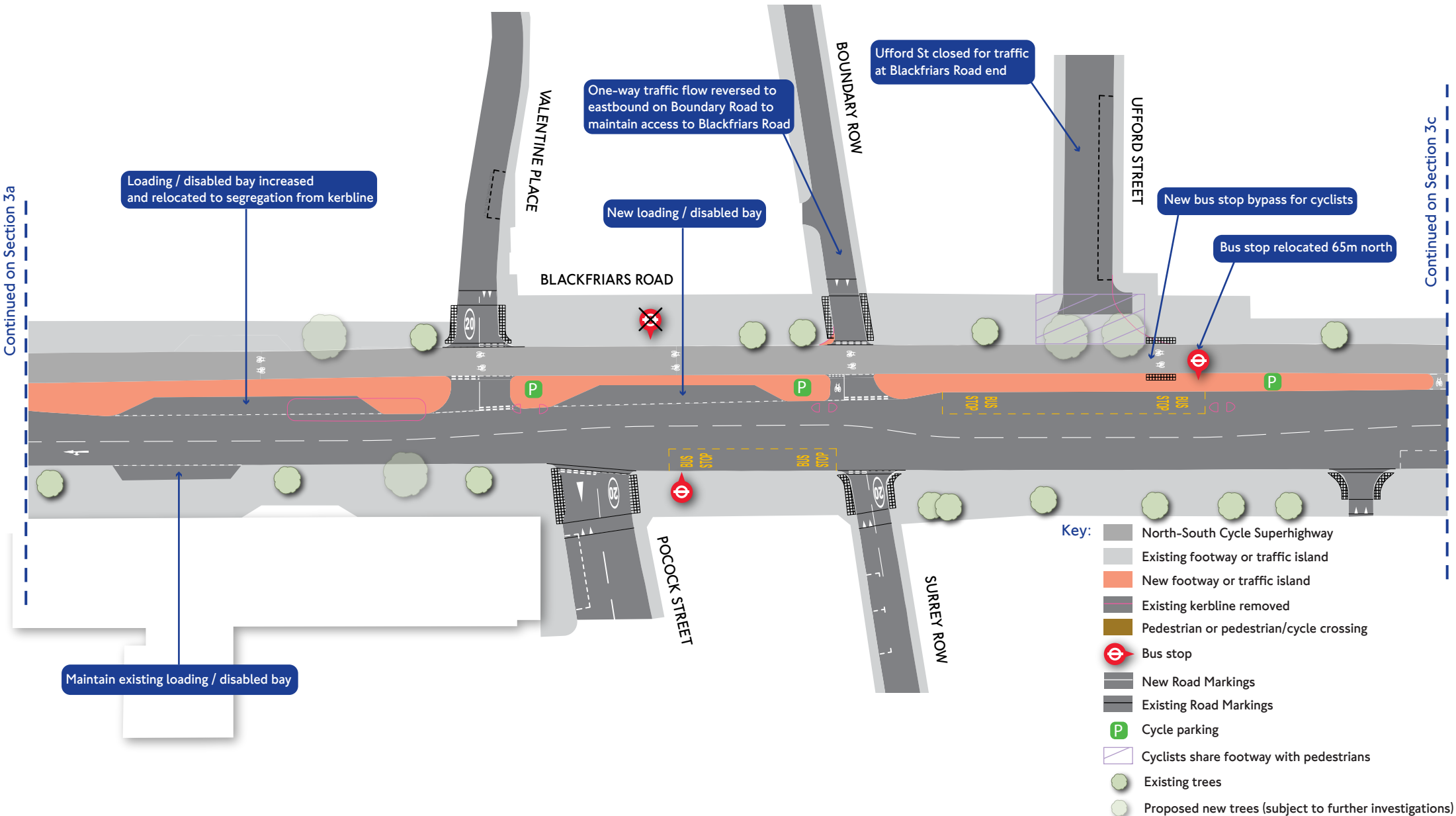
The Clarence Centre







# North-South Cycle Superhighway Section 3b – Blackfriars Road



# North-South Cycle Superhighway Section 3c – Blackfriars Road

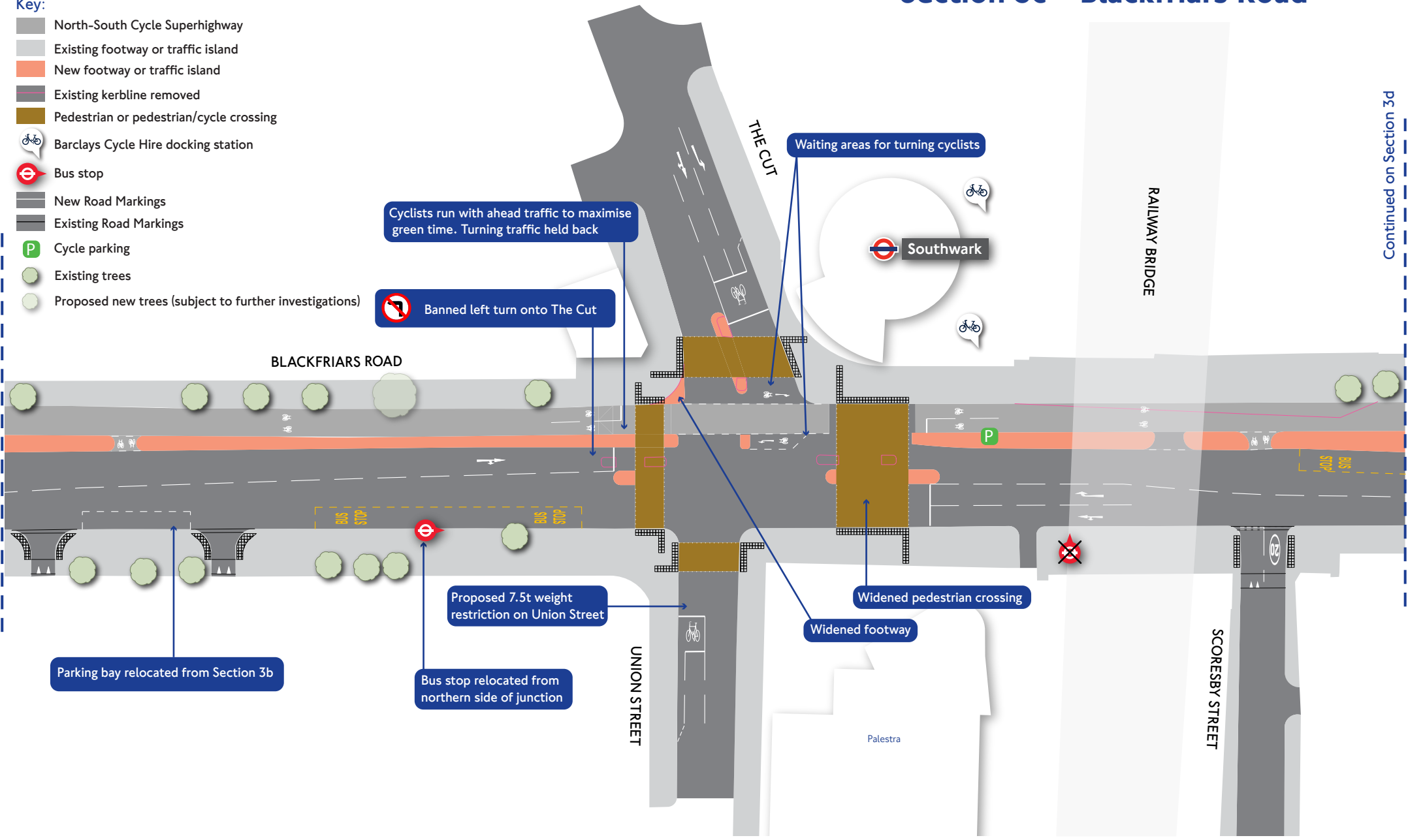


Key:

- North-South Cycle Superhighway
- Existing footway or traffic island
- New footway or traffic island
- Existing kerbline removed
- Pedestrian or pedestrian/cycle crossing
- Barclays Cycle Hire docking station
- Bus stop
- New Road Markings
- Existing Road Markings
- Cycle parking
- Existing trees
- Proposed new trees (subject to further investigations)

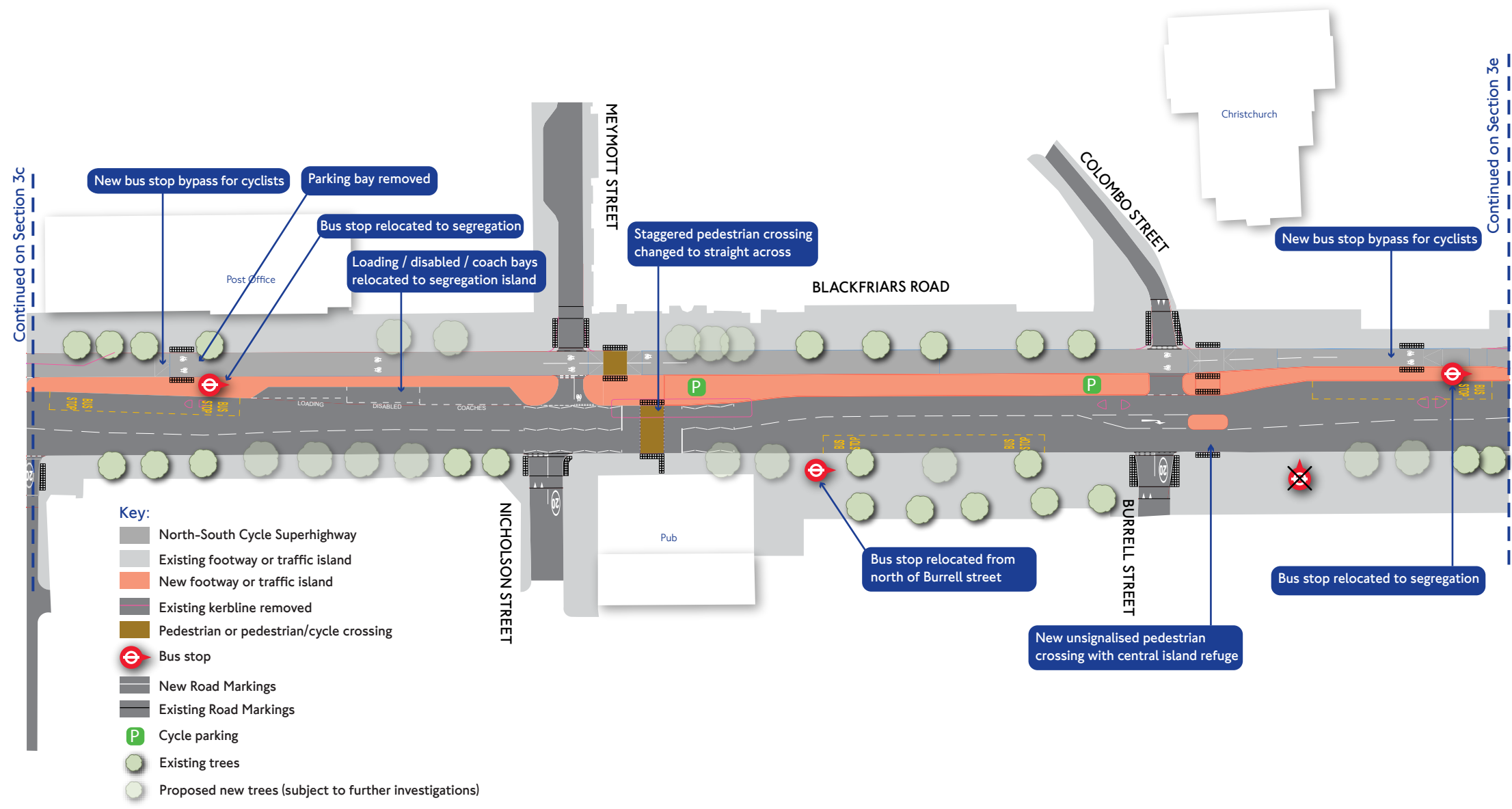
Continued on Section 3b

Continued on Section 3d





# North-South Cycle Superhighway Section 3d – Blackfriars Road



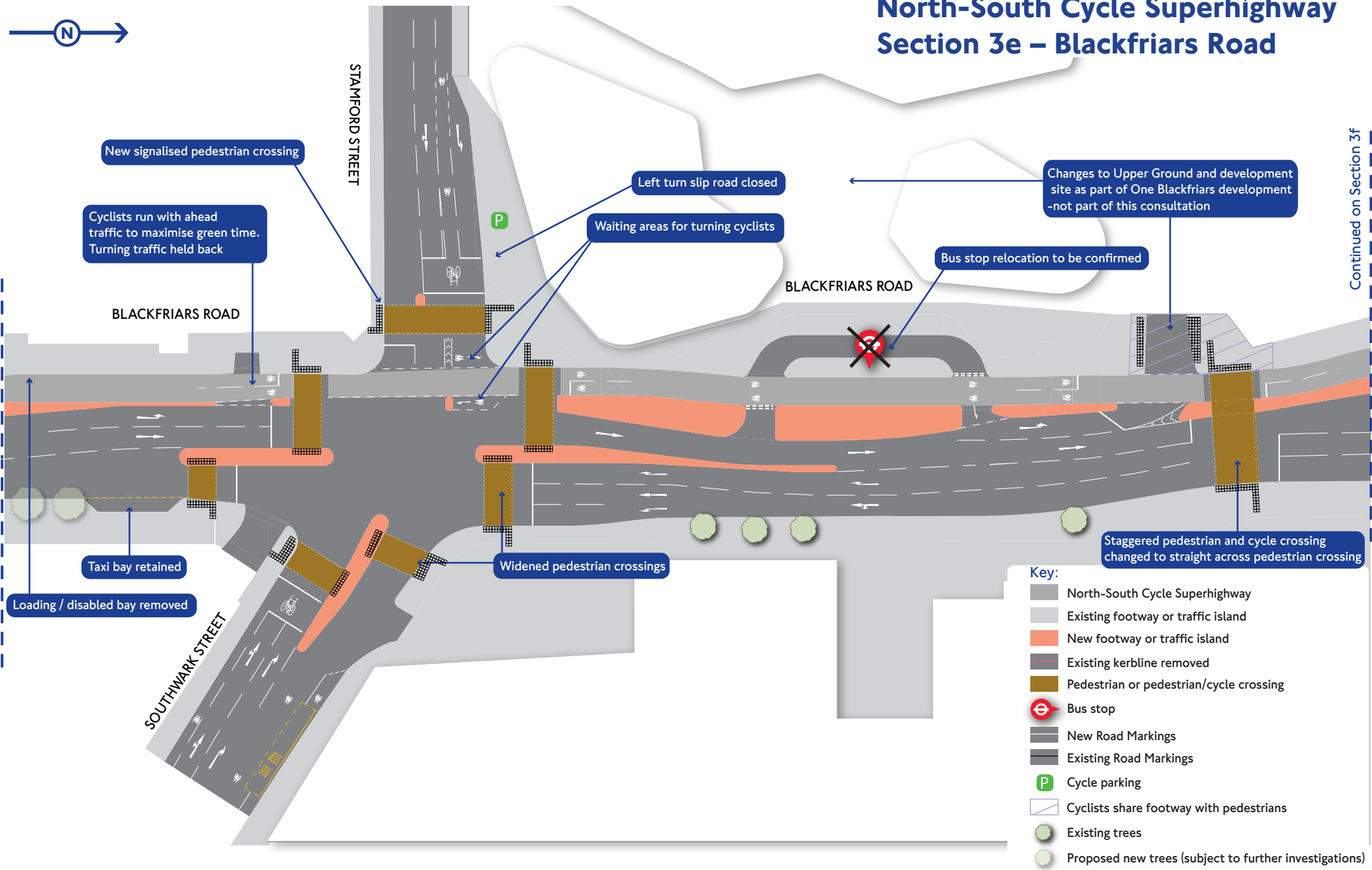
- Key:**
- North-South Cycle Superhighway
  - Existing footway or traffic island
  - New footway or traffic island
  - Existing kerblines removed
  - Pedestrian or pedestrian/cycle crossing
  - Bus stop
  - New Road Markings
  - Existing Road Markings
  - Cycle parking
  - Existing trees
  - Proposed new trees (subject to further investigations)

# North-South Cycle Superhighway Section 3e – Blackfriars Road



Continued on Section 3f

Continued on Section 3d



New signalised pedestrian crossing

Cyclists run with ahead traffic to maximise green time. Turning traffic held back

Left turn slip road closed

Waiting areas for turning cyclists

Changes to Upper Ground and development site as part of One Blackfriars development -not part of this consultation

Bus stop relocation to be confirmed

BLACKFRIARS ROAD

BLACKFRIARS ROAD

Taxi bay retained

Loading / disabled bay removed

Widened pedestrian crossings

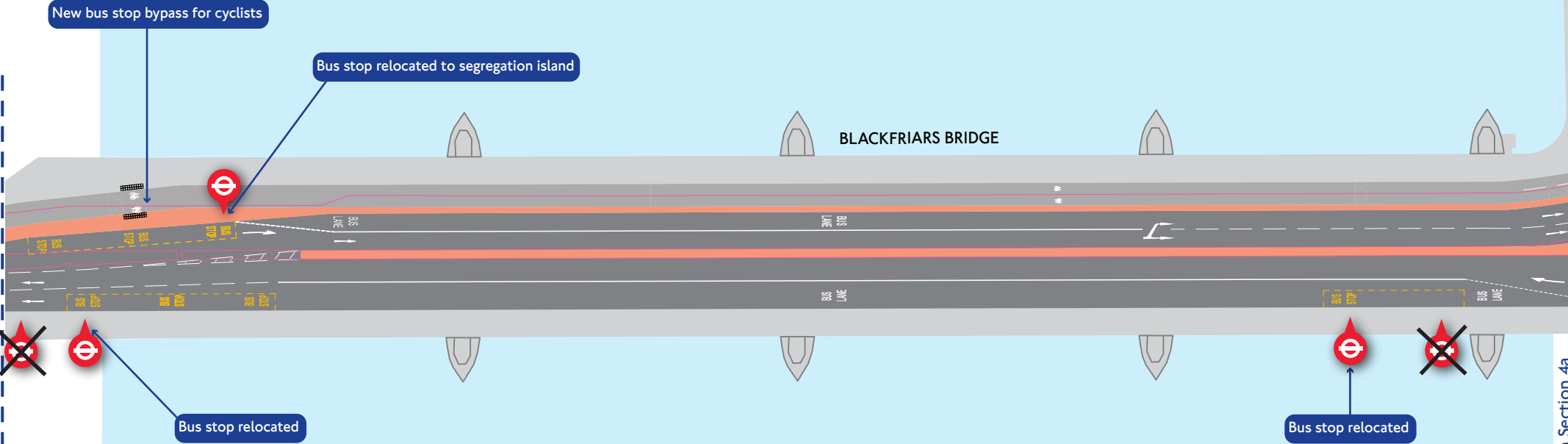
Staggered pedestrian and cycle crossing changed to straight across pedestrian crossing

- Key:**
- North-South Cycle Superhighway
  - Existing footway or traffic island
  - New footway or traffic island
  - Existing kerblines removed
  - Pedestrian or pedestrian/cycle crossing
  - Bus stop
  - New Road Markings
  - Existing Road Markings
  - Cycle parking
  - Cyclists share footway with pedestrians
  - Existing trees
  - Proposed new trees (subject to further investigations)

# North-South Cycle Superhighway Section 3f – Blackfriars Bridge



Continued on Section 3e











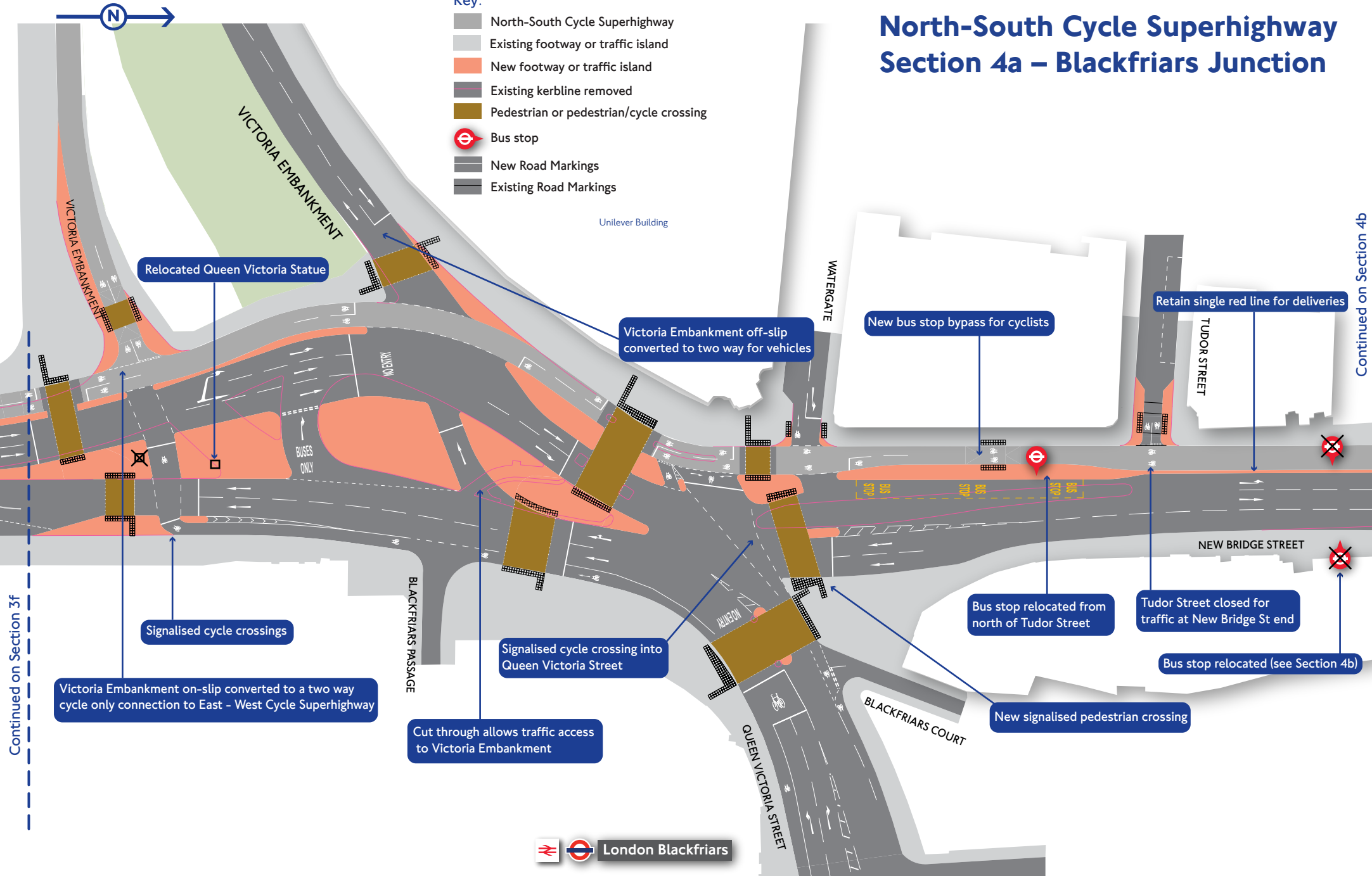
Continued on Section 4a

**Key:**

- North-South Cycle Superhighway
- Existing footway or traffic island
- New footway or traffic island
- Existing kerblines removed
- Pedestrian or pedestrian/cycle crossing
- Bus stop
- New Road Markings
- Existing Road Markings

# North-South Cycle Superhighway Section 4a – Blackfriars Junction

- Key:**
-  North-South Cycle Superhighway
  -  Existing footway or traffic island
  -  New footway or traffic island
  -  Existing kerbline removed
  -  Pedestrian or pedestrian/cycle crossing
  -  Bus stop
  -  New Road Markings
  -  Existing Road Markings



Continued on Section 3f

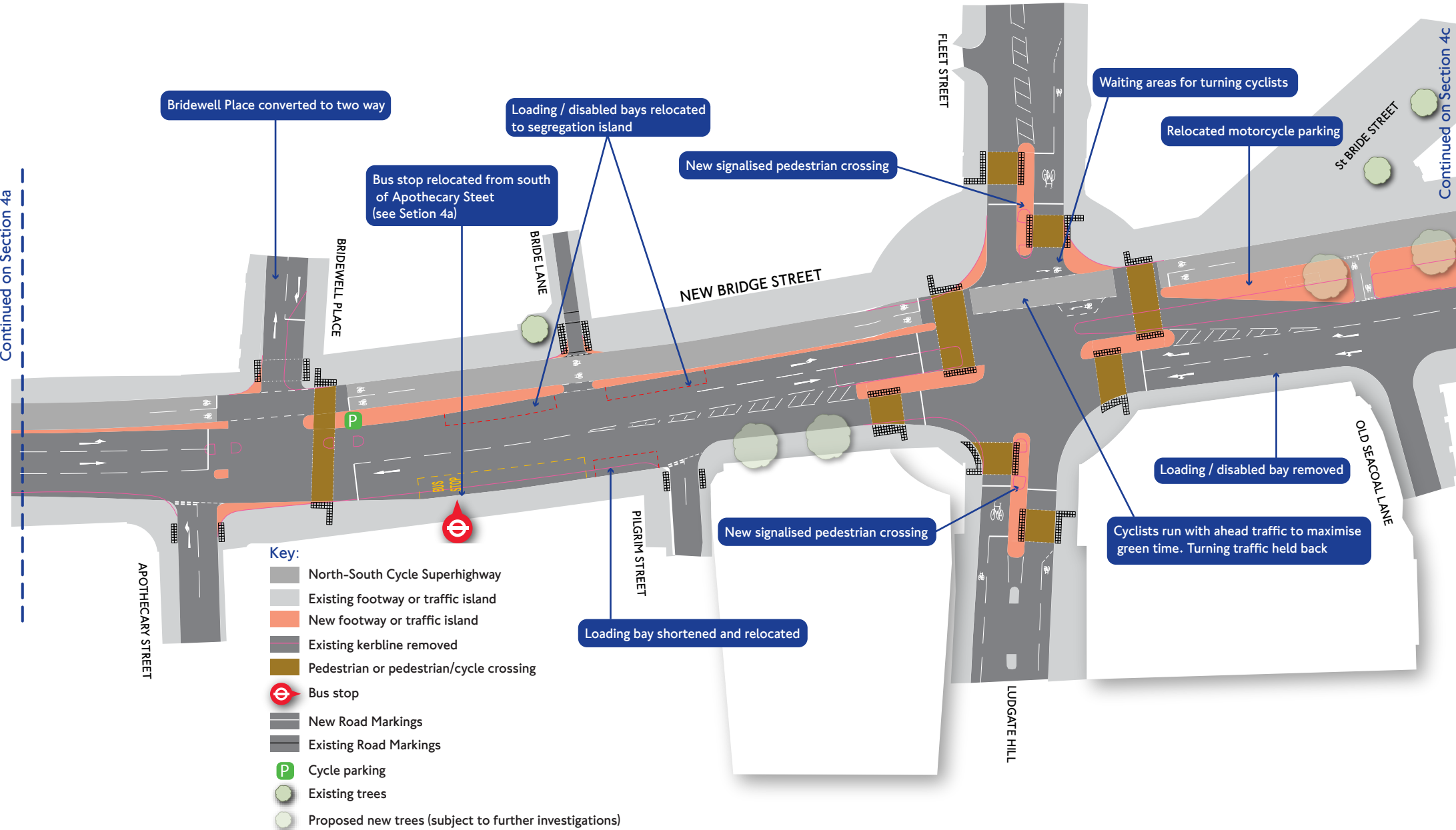
Continued on Section 4b

 London Blackfriars



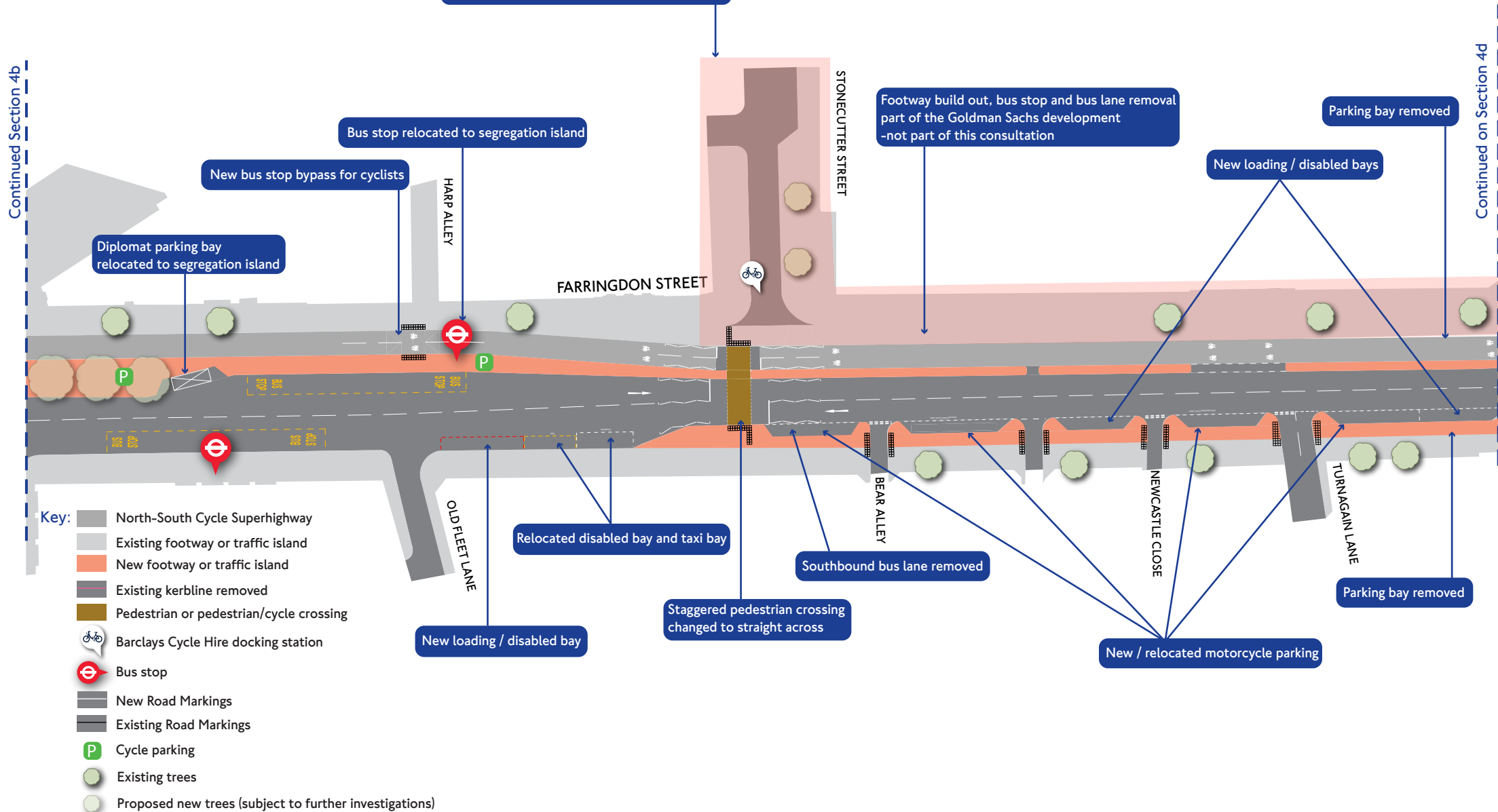


# North-South Cycle Superhighway Section 4b – New Bridge Street





# North-South Cycle Superhighway Section 4c – Farringdon Street

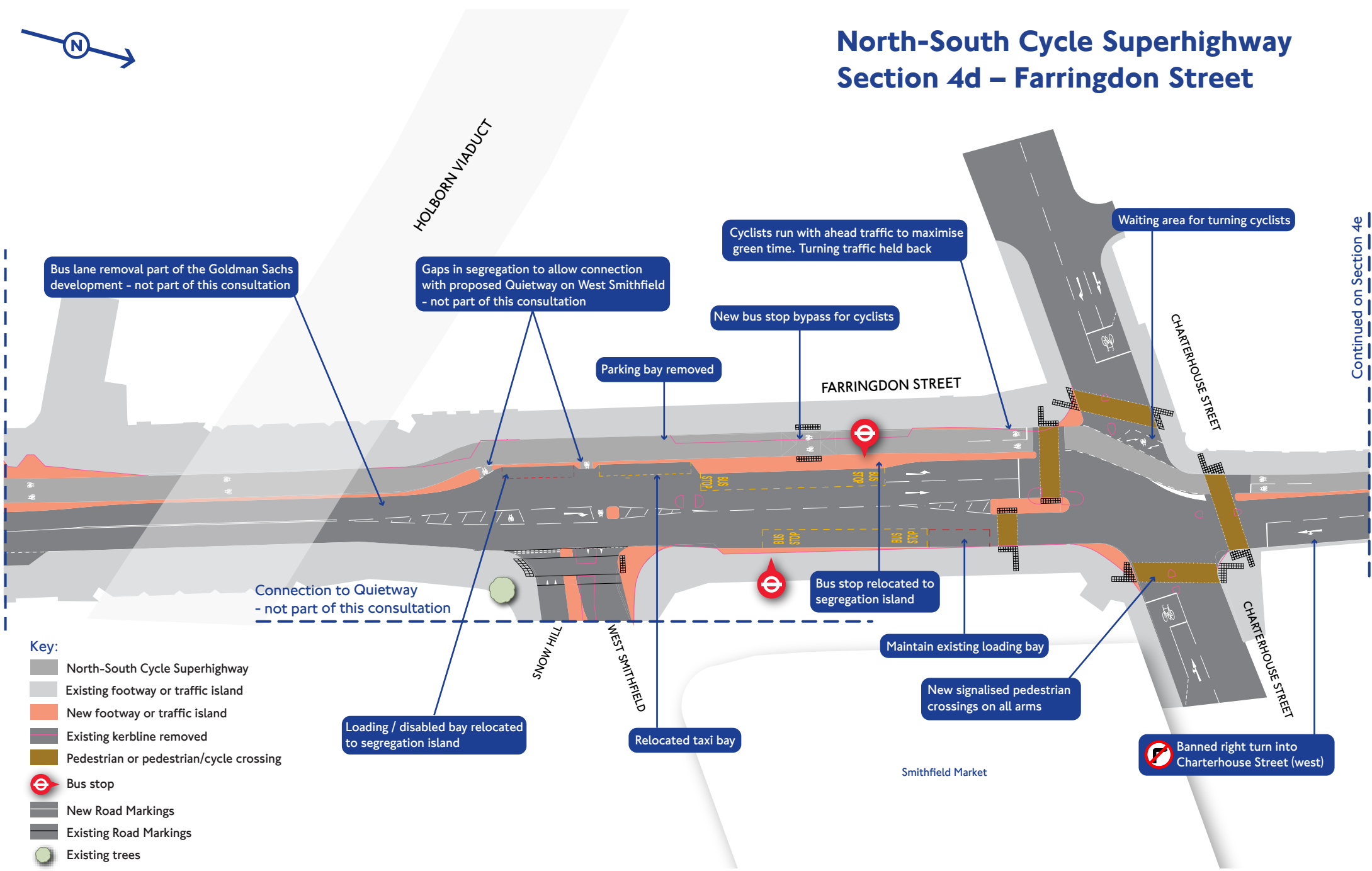


# North-South Cycle Superhighway Section 4d – Farringdon Street



Continued on Section 4c

Continued on Section 4e



Bus lane removal part of the Goldman Sachs development - not part of this consultation

Gaps in segregation to allow connection with proposed Quietway on West Smithfield - not part of this consultation

Cyclists run with ahead traffic to maximise green time. Turning traffic held back

Waiting area for turning cyclists

New bus stop bypass for cyclists

Parking bay removed

FARRINGDON STREET

CHARTERHOUSE STREET

Connection to Quietway - not part of this consultation

Bus stop relocated to segregation island

Maintain existing loading bay

New signalled pedestrian crossings on all arms

Banned right turn into Charterhouse Street (west)

Loading / disabled bay relocated to segregation island

Relocated taxi bay

Smithfield Market

HOLBORN VIADUCT

SNOW HILL

WEST SMITHFIELD

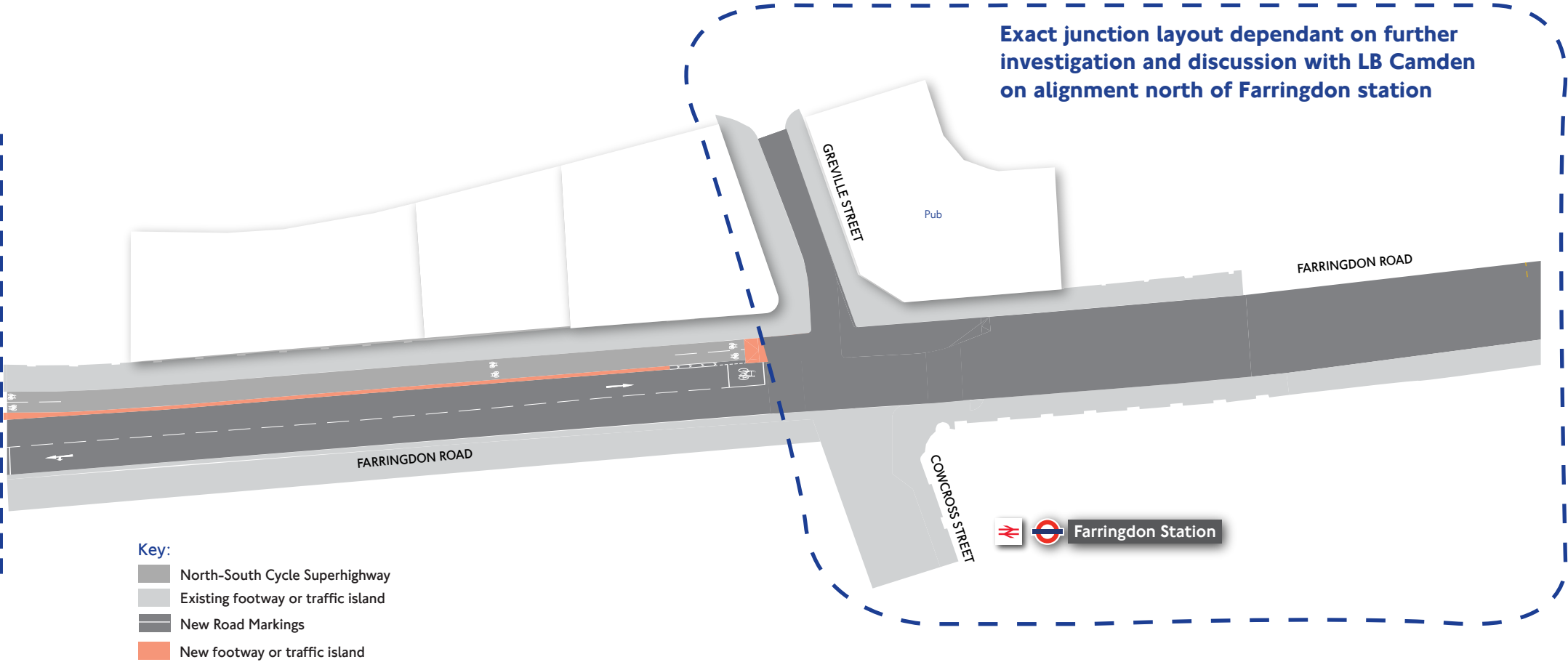
CHARTERHOUSE STREET

- Key:**
- North-South Cycle Superhighway
  - Existing footway or traffic island
  - New footway or traffic island
  - Existing kerbline removed
  - Pedestrian or pedestrian/cycle crossing
  - Bus stop
  - New Road Markings
  - Existing Road Markings
  - Existing trees



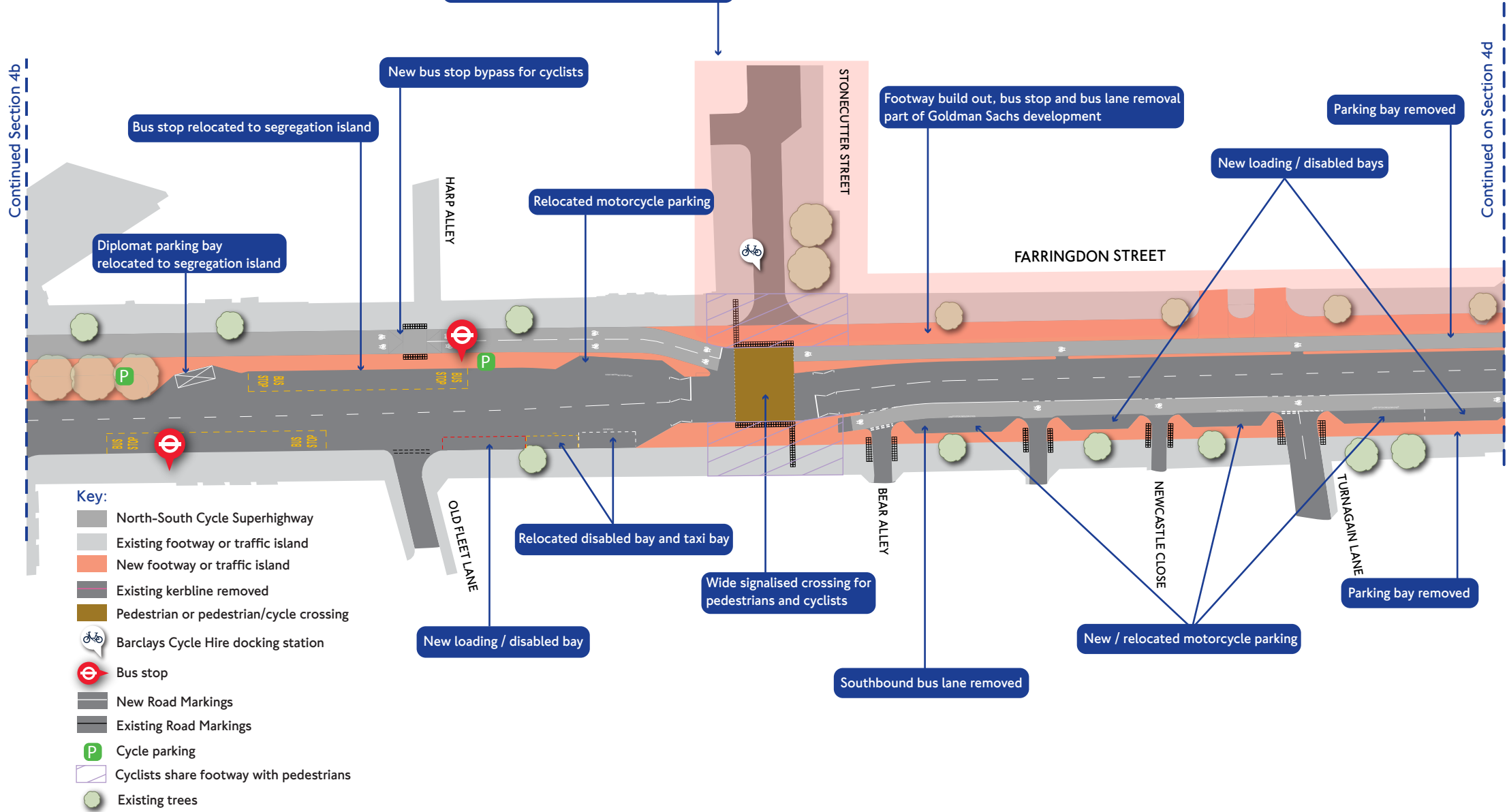
# North-South Cycle Superhighway Section 4e – Farringdon Road

Continued on Section 4d





# North-South Cycle Superhighway Section 4c – Farringdon Street



# North-South Cycle Superhighway Section 4d – Farringdon Street



Continued on Section 4c

Continued on Section 4e

Bus lane removal part of the Goldman Sachs development - not part of this consultation

Gaps in segregation to allow connection with Quietway on West Smithfield - not part of this consultation

Cyclists run with ahead traffic to maximise green time. Turning traffic held back

Waiting area for right turning cyclists

Parking bay removed

New bus stop bypass for cyclists

Bus stop relocated to segregation island

FARRINGDON STREET

CHARTERHOUSE STREET

Connection to proposed Quietway - not part of this consultation

Loading / disabled bay relocated to segregation island

Relocated taxi bay

Loading bay removed

New bus stop bypass for cyclists

Waiting area for right turning cyclists

- Key:**
- North-South Cycle Superhighway
  - Existing footway or traffic island
  - New footway or traffic island
  - Existing kerblines removed
  - Pedestrian or pedestrian/cycle crossing
  - Bus stop
  - New Road Markings
  - Existing Road Markings
  - Existing trees

SNOW HILL

WEST SMITHFIELD

Smithfield Market

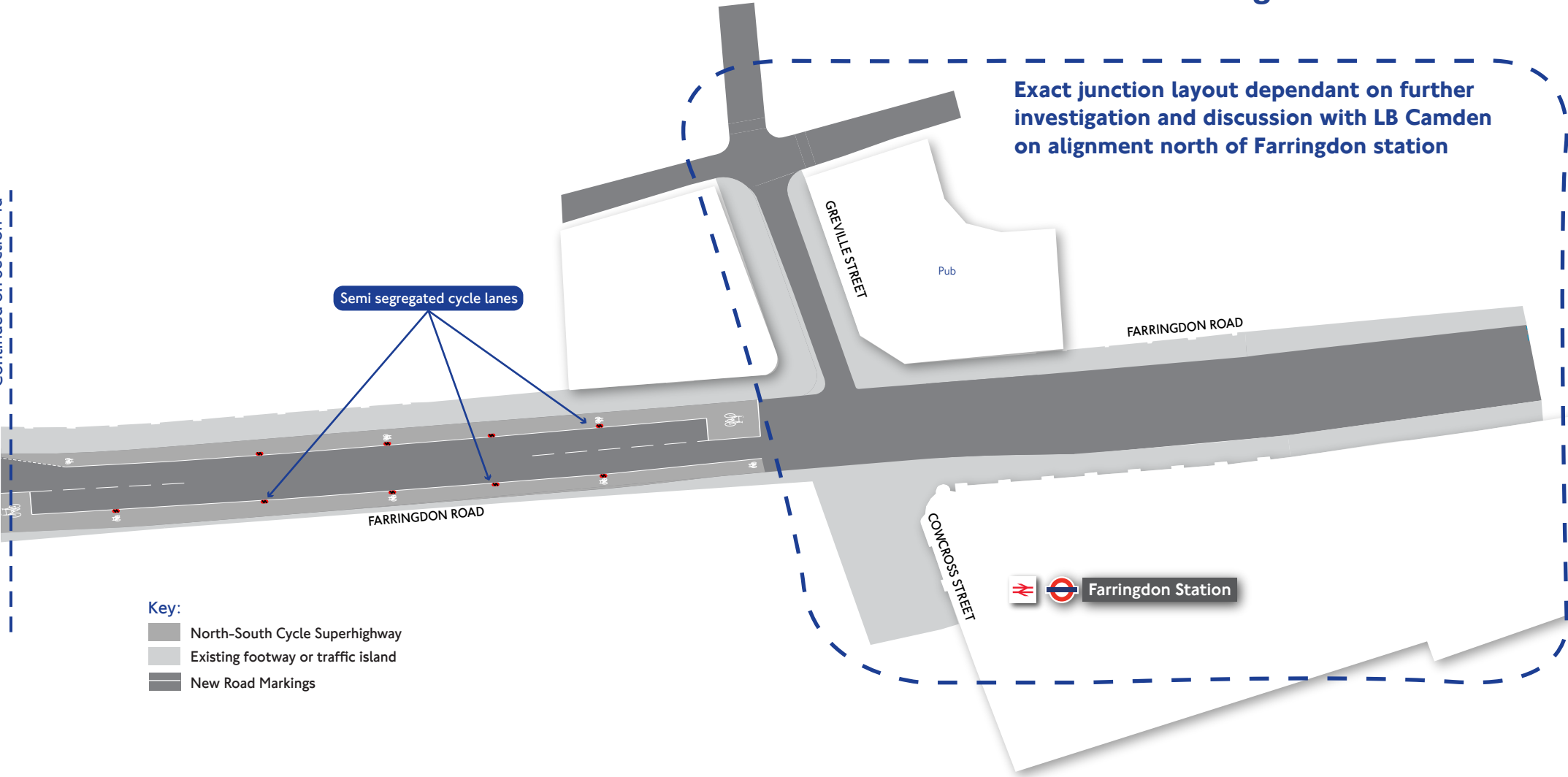
New signalised pedestrian crossings on all arms

CHARTERHOUSE STREET



# North-South Cycle Superhighway Section 4e – Farringdon Road

Continued on Section 4d



- Key:**
- North-South Cycle Superhighway
  - Existing footway or traffic island
  - New Road Markings