



LEGEND / NOTES.

- NOTES:
- THIS DRAWING IS TO READ IN CONJUNCTION WITH ALL CONWAY AECOM DRAWINGS FOR JOB REF 60343287-C0255 LISTED ON THE SCHEME DOCUMENT ISSUE SHEET.
 - THE CONTRACTOR SHALL BE RESPONSIBLE FOR ESTABLISHING THE POSITION AND STATUS OF ALL STATUTORY UTILITY APPARATUS PRIOR TO COMMENCING ANY WORKS. THE CONTRACTOR SHALL COORDINATE AND UNDERTAKE ALL WORKS IN CONJUNCTION AND AGREEMENT WITH THE AFFECTED STATUTORY UTILITY COMPANIES AS NECESSARY.
 - ALL NEW SIGNS AND ROAD MARKINGS ARE TO BE LAID IN ACCORDANCE WITH "THE TRAFFIC SIGNS REGULATIONS AND GENERAL DIRECTIONS 2016" (TSRGD).
 - ALL ITEMS SHOWN IN GREY ARE EXISTING AND ARE TO REMAIN UNLESS STATED OTHERWISE. ALL PROPOSED ITEMS ARE SHOWN IN BLACK.
 - DO NOT SCALE FROM THIS DRAWING. USE FIGURED DIMENSIONS ONLY. ALL DIMENSIONS AND LEVELS ARE IN METRES, UNLESS OTHERWISE STATED.
 - DESIGN BASED ON TOPOGRAPHICAL SURVEY OBTAINED FROM LB SOUTHWARK. LEVELS AND SETTING OUT TO BE CHECKED ON SITE BY CONTRACTOR PRIOR TO THE START OF WORKS.
 - CO-ORDINATE WITH LBS STREET LIGHTING TEAM FOR PROPOSED SIGN/COLUMN REMOVAL AND PROPOSED NEW SIGNS.

KEY:

- PS# Proposed traffic sign(s). Refer to drawing 60343287-C0255-DD-DWG-S2-1210 for additional information.
- Proposed Quietway Wayfinding symbol as below. Refer to TABLE 1 for additional information on proposed road markings.

Refer to drawing 60343287-C0255-DD-DWG-S2-1210 for wayfinding road marking positioning information.

All existing wayfinding cycle symbols to be removed using high pressure water jet.

TABLE 1 - PROPOSED ROAD MARKINGS SCHEDULE (as per TSRGD 2016)

Ref.	TSRGD Diag.	Marking	Ref.	TSRGD Diag.	Marking
1	1062		11	1001.2A	
2	1028.1 (100mm)		12	1018.1 (50mm)	
3	1023A		13	1001.4	
4	1004 (100mm)		14	1036.1 (4.00m)	
5	1003A		15	1019 (100mm)	
6	1009A		16	1012.1 (100mm)	
7	1057 (1215mm)		17	1027.1 (100mm)	
8	1057.1 (705mm)				
9	1059 (1000mm)				
10	1029				

REV	DATE	REVISION DESCRIPTION / DETAILS	DRN BY	CHKD BY	APRVD BY
C	14/07/2017	Amendments as per RSA and buildability meeting FOR CONSTRUCTION	CSS	MF	JE
B	19/05/2017	No Changes	CSS	AG	AGB
A*	28/04/2017	Amendments as per comments (Sheets 3 to 6)	CSS	AG	AGB
A	21/04/2017	TMO comments added	CSS/MB	AG	AGB

PROJECT: QUIETWAY 7 - ELEPHANT & CASTLE TO CRYSTAL PALACE (QW3a)

TITLE: SECTION 3A - 1200 - TRAFFIC SIGNS & ROAD MARKINGS (Sheet 1 of 8)

CONTRACT NO:	60343287-C0255	DRAWN:	MB
SCALE:	1:1000 @ A1	DESIGNED:	MB
DRAWING NO:	60343287-C0255-DD-DWG-S3A-1201	CHECKED:	AG
DATE DRAWN:	DECEMBER 2016	APPROVED:	AGB
DATE ISSUED:	14/02/2017	REV:	C

Z:\50 CAD\DETAILED DESIGN\SECTION THREE\1200\DWG\60343287-C0255-DD-DWG-S3A-1201-08.DWG

LEGEND / NOTES.

NOTES:

- THIS DRAWING IS TO READ IN CONJUNCTION WITH ALL CONWAY AECOM DRAWINGS FOR JOB REF 60343287-C0255 LISTED ON THE SCHEME DOCUMENT ISSUE SHEET.
- THE CONTRACTOR SHALL BE RESPONSIBLE FOR ESTABLISHING THE POSITION AND STATUS OF ALL STATUTORY UTILITY APPARATUS PRIOR TO COMMENCING ANY WORKS. THE CONTRACTOR SHALL COORDINATE AND UNDERTAKE ALL WORKS IN CONJUNCTION AND AGREEMENT WITH THE AFFECTED STATUTORY UTILITY COMPANIES AS NECESSARY.
- ALL NEW SIGNS AND ROAD MARKINGS ARE TO BE LAID IN ACCORDANCE WITH "THE TRAFFIC SIGNS REGULATIONS AND GENERAL DIRECTIONS 2016" (TSRGD).
- ALL ITEMS SHOWN IN GREY ARE EXISTING AND ARE TO REMAIN UNLESS STATED OTHERWISE. ALL PROPOSED ITEMS ARE SHOWN IN BLACK.
- DO NOT SCALE FROM THIS DRAWING. USE FIGURED DIMENSIONS ONLY. ALL DIMENSIONS AND LEVELS ARE IN METRES, UNLESS OTHERWISE STATED.
- DESIGN BASED ON TOPOGRAPHICAL SURVEY OBTAINED FROM LB SOUTHWARK. LEVELS AND SETTING OUT TO BE CHECKED ON SITE BY CONTRACTOR PRIOR TO THE START OF WORKS.
- CO-ORDINATE WITH LBS STREET LIGHTING TEAM FOR PROPOSED SIGN/COLUMN REMOVAL AND PROPOSED NEW SIGNS.

KEY:

- Proposed kerb line. Refer to drawings 60343287-C0255-DD-DWG-S3A-1101-1106 for additional information.
- Proposed footway. Refer to drawings 60343287-C0255-DD-DWG-S3A-1101-1106 for additional information.
- Proposed raised table construction. Refer to drawings 60343287-C0255-DD-DWG-S3A-1101-1106 for additional information.
- Proposed sinusoidal road hump construction. Refer to drawings 60343287-C0255-DD-DWG-S3A-1101-1106 for additional information.
- Proposed carriageway surface. Refer to drawings 60343287-C0255-DD-DWG-S3A-1101-1106 for additional information.
- Road marking type reference numbers. Refer to TABLE 1 on drawing 60343287-C0255-DWG-S3A-1201 for additional information. Refer to drawing 60343287-C0255-DD-DWG-S3A-1211 for wayfinding road marking positioning information.
- PS# Proposed traffic sign(s). Refer to drawing 60343287-C0255-DD-DWG-S3A-1210 and 60343287-C0255-DWG-S3A-1211 for additional information.
- PIB# Proposed belisha beacon. Refer to drawing 60343287-C0255-DD-DWG-S3A-1210 for additional information.
- PMEB# Proposed westminster bollard. Refer to drawing 60343287-C0255-DD-DWG-S3A-1210 for additional information.
- PB# Proposed steel bollard. Refer to drawing 60343287-C0255-DD-DWG-S3A-1210 for additional information.

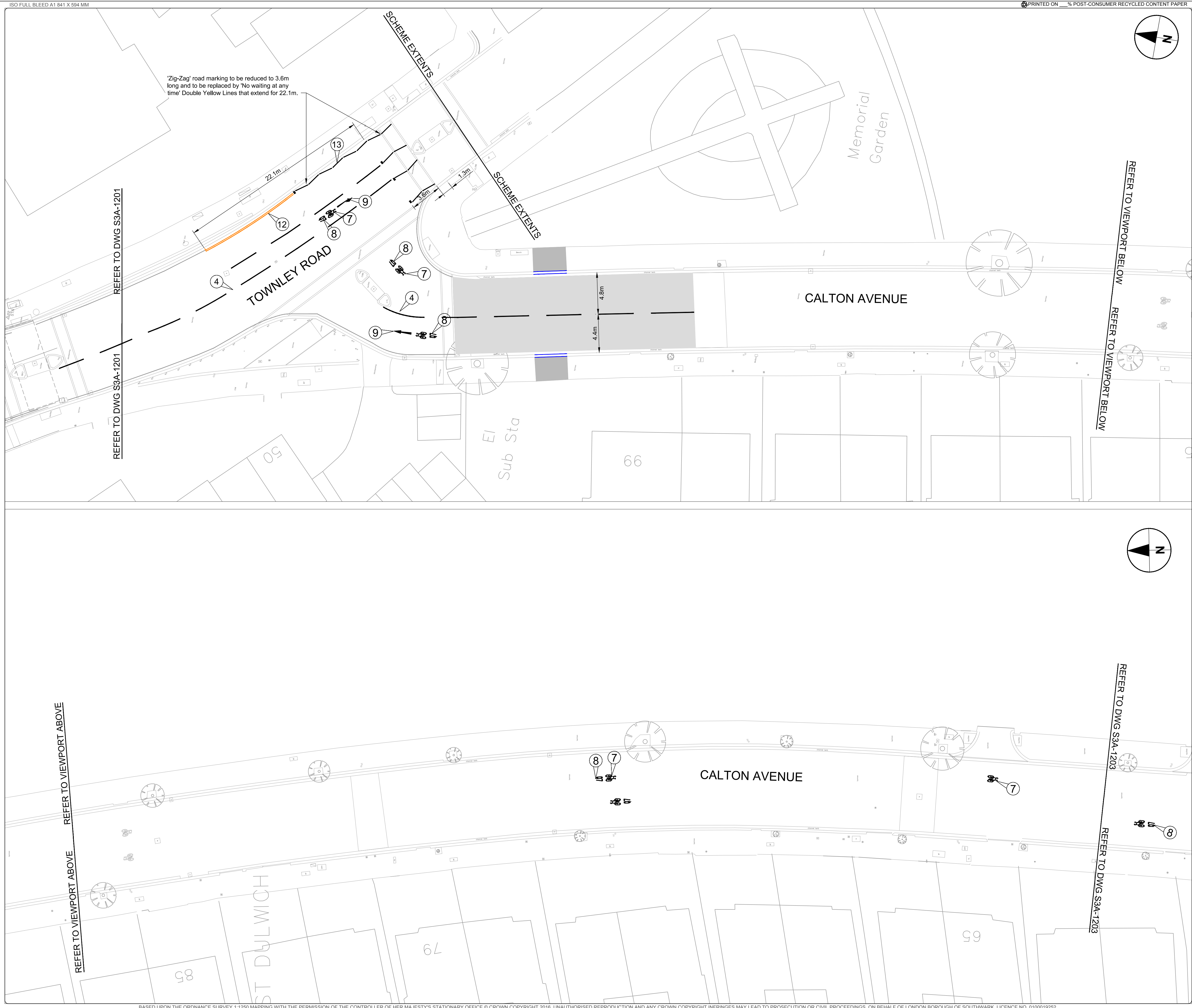
All dimensions quoted for proposed longitudinal lane markings shall be measured to the centre line of the marking.

All cycle logos along the route to be refreshed.

C	14/07/2017	Amendments as per RSA and buildability meeting FOR CONSTRUCTION	CSS	MF	JE
B	19/05/2017	No Changes	CSS	AG	AGB
A*	28/04/2017	Amendments as per comments (Sheets 3 to 8)	CSS	AG	AGB
A	21/04/2017	TMO comments added	CSS/MB	AG	AGB
REV	DATE	REVISION DESCRIPTION / DETAILS	DRN	CHKD	APPRD
			BY	BY	BY



PROJECT: QUIETWAY 7 - ELEPHANT & CASTLE TO CRYSTAL PALACE (QW3a)			
TITLE: SECTION 3A - TRAFFIC SIGNS & ROAD MARKINGS (SHEET 2 OF 8)			
CONTRACT NO:	60343287-C0255	DRAWN	MB
SCALE:	1:200 @ A1	DESIGNED	MB
DRAWING NO:	60343287-C0255-DD-DWG-S3A-1202	CHECKED	AG
DATE DRAWN:	DECEMBER 2016	APPROVED	AGB
		REV:	C
		DATE ISSUED:	14/02/2017



LEGEND / NOTES.

NOTES:

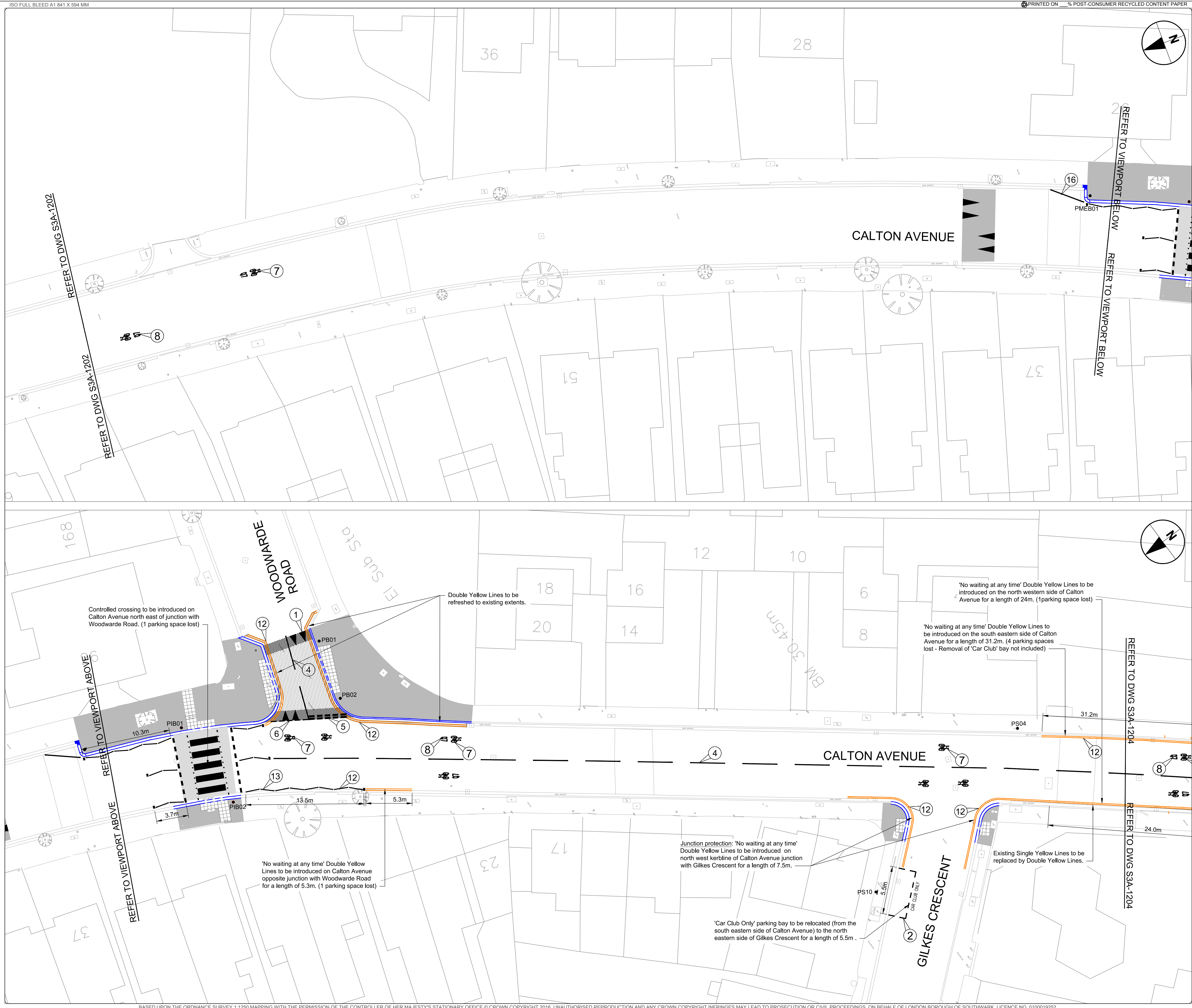
1. THIS DRAWING IS TO READ IN CONJUNCTION WITH ALL CONWAY AECOM DRAWINGS FOR JOB REF 60343287-C0255 LISTED ON THE SCHEME DOCUMENT ISSUE SHEET.
2. THE CONTRACTOR SHALL BE RESPONSIBLE FOR ESTABLISHING THE POSITION AND STATUS OF ALL STATUTORY UTILITY APPARATUS PRIOR TO COMMENCING ANY WORKS. THE CONTRACTOR SHALL COORDINATE AND UNDERTAKE ALL WORKS IN CONJUNCTION AND AGREEMENT WITH THE AFFECTED STATUTORY UTILITY COMPANIES AS NECESSARY.
3. ALL NEW SIGNS AND ROAD MARKINGS ARE TO BE LAID IN ACCORDANCE WITH "THE TRAFFIC SIGNS REGULATIONS AND GENERAL DIRECTIONS 2016" (TSRGD).
4. ALL ITEMS SHOWN IN GREY ARE EXISTING AND ARE TO REMAIN UNLESS STATED OTHERWISE. ALL PROPOSED ITEMS ARE SHOWN IN BLACK.
5. DO NOT SCALE FROM THIS DRAWING. USE FIGURED DIMENSIONS ONLY. ALL DIMENSIONS AND LEVELS ARE IN METRES, UNLESS OTHERWISE STATED.
6. DESIGN BASED ON TOPOGRAPHICAL SURVEY OBTAINED FROM LB SOUTHWARK. LEVELS AND SETTING OUT TO BE CHECKED ON SITE BY CONTRACTOR PRIOR TO THE START OF WORKS.
7. CO-ORDINATE WITH LBS STREET LIGHTING TEAM FOR PROPOSED SIGN/COLUMN REMOVAL AND PROPOSED NEW SIGNS.

KEY:

- Proposed kerb line. Refer to drawings 60343287-C0255-DD-DWG-S3A-1101-1106 for additional information.
- Proposed footway. Refer to drawings 60343287-C0255-DD-DWG-S3A-1101-1106 for additional information.
- Proposed raised table construction. Refer to drawings 60343287-C0255-DD-DWG-S3A-1101-1106 for additional information.
- Proposed sinusoidal road hump construction. Refer to drawings 60343287-C0255-DD-DWG-S3A-1101-1106 for additional information.
- Proposed carriageway surface. Refer to drawings 60343287-C0255-DD-DWG-S3A-1101-1106 for additional information.
- Road marking type reference numbers. Refer to TABLE 1 on drawing 60343287-C0255-DWG-S3A-1201 for additional information. Refer to drawing 60343287-C0255-DD-DWG-S3A-1211 for wayfinding road marking positioning information.
- PS# Proposed traffic sign(s). Refer to drawing 60343287-C0255-DD-DWG-S3A-1210 and 60343287-C0255-DWG-S3A-1211 for additional information.
- PIB# Proposed belisha beacon. Refer to drawing 60343287-C0255-DD-DWG-S3A-1210 for additional information.
- PMEB# Proposed westminster bollard. Refer to drawing 60343287-C0255-DD-DWG-S3A-1210 for additional information.
- PB# Proposed steel bollard. Refer to drawing 60343287-C0255-DD-DWG-S3A-1210 for additional information.

All dimensions quoted for proposed longitudinal lane markings shall be measured to the centre line of the marking.

All cycle logos along the route to be refreshed.

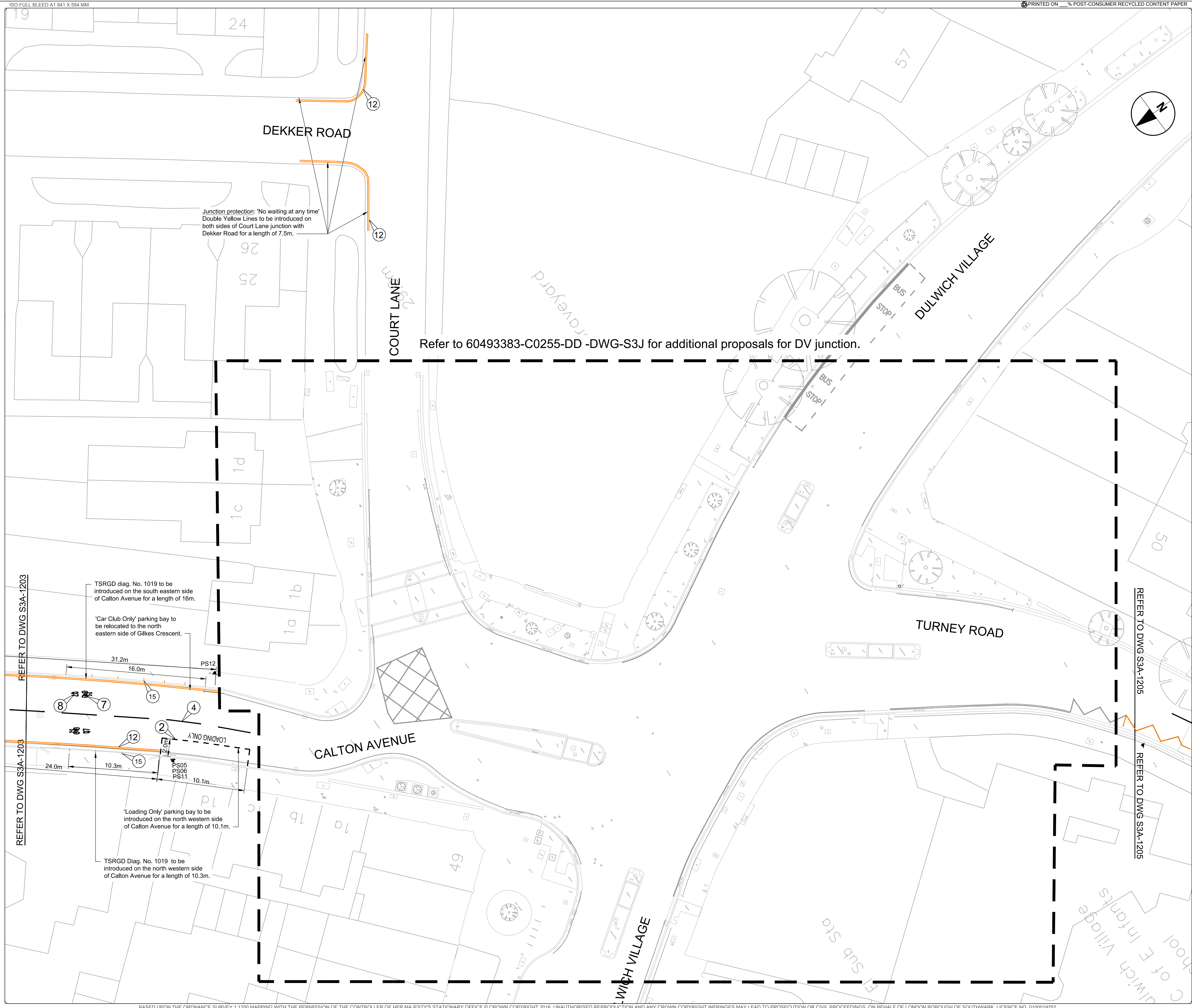


REV	DATE	REVISION DESCRIPTION / DETAILS	DRN	CHKD	APPRVD	BY	BY	BY
C	14/07/2017	Amendments as per RSA and buildability meeting FOR CONSTRUCTION	CSS	MF	JE			
B	19/05/2017	No Changes	CSS	AG	AGB			
A'	28/04/2017	Amendments as per comments (Sheets 3 to 8)	CSS	AG	AGB			
A	21/04/2017	TMO comments added	CSS/MB	AG	AGB			

Shaping Southwark's Highways

 160 TOOLEY STREET LONDON SE1P 5LX

PROJECT:		QUIETWAY 7 - ELEPHANT & CASTLE TO CRYSTAL PALACE (QW3a)	
TITLE:		SECTION 3A - TRAFFIC SIGNS & ROAD MARKINGS (SHEET 3 OF 8)	
CONTRACT NO:	60343287-C0255	DRAWN	MB
SCALE:	1:200 @ A1	DESIGNED	MB
DRAWING NO:	60343287-C0255-DD-DWG-S3A-1203	CHECKED	AG
DATE DRAWN:	DECEMBER 2016	APPROVED	AGB
DATE ISSUED:	14/02/2017	REV:	C



LEGEND / NOTES.

- NOTES:
- THIS DRAWING IS TO READ IN CONJUNCTION WITH ALL CONWAY AECOM DRAWINGS FOR JOB REF 60343287-C0255 LISTED ON THE SCHEME DOCUMENT ISSUE SHEET.
 - THE CONTRACTOR SHALL BE RESPONSIBLE FOR ESTABLISHING THE POSITION AND STATUS OF ALL STATUTORY UTILITY APPARATUS PRIOR TO COMMENCING ANY WORKS. THE CONTRACTOR SHALL COORDINATE AND UNDERTAKE ALL WORKS IN CONJUNCTION AND AGREEMENT WITH THE AFFECTED STATUTORY UTILITY COMPANIES AS NECESSARY.
 - ALL NEW SIGNS AND ROAD MARKINGS ARE TO BE LAID IN ACCORDANCE WITH "THE TRAFFIC SIGNS REGULATIONS AND GENERAL DIRECTIONS 2016" (TSRGD).
 - ALL ITEMS SHOWN IN GREY ARE EXISTING AND ARE TO REMAIN UNLESS STATED OTHERWISE. ALL PROPOSED ITEMS ARE SHOWN IN BLACK.
 - DO NOT SCALE FROM THIS DRAWING. USE FIGURED DIMENSIONS ONLY. ALL DIMENSIONS AND LEVELS ARE IN METRES, UNLESS OTHERWISE STATED.
 - DESIGN BASED ON TOPOGRAPHICAL SURVEY OBTAINED FROM LB SOUTHWARK. LEVELS AND SETTING OUT TO BE CHECKED ON SITE BY CONTRACTOR PRIOR TO THE START OF WORKS.
 - CO-ORDINATE WITH LBS STREET LIGHTING TEAM FOR PROPOSED SIGN/COLUMN REMOVAL AND PROPOSED NEW SIGNS.

- KEY:
- Proposed kerb line. Refer to drawings 60343287-C0255-DD-DWG-S3A-1101-1106 for additional information.
 - Proposed footway. Refer to drawings 60343287-C0255-DD-DWG-S3A-1101-1106 for additional information.
 - Proposed raised table construction. Refer to drawings 60343287-C0255-DD-DWG-S3A-1101-1106 for additional information.
 - Proposed sinusoidal road hump construction. Refer to drawings 60343287-C0255-DD-DWG-S3A-1101-1106 for additional information.
 - Proposed carriageway surface. Refer to drawings 60343287-C0255-DD-DWG-S3A-1101-1106 for additional information.
 - Road marking type reference numbers. Refer to TABLE 1 on drawing 60343287-C0255-DWG-S3A-1201 for additional information. Refer to drawing 60343287-C0255-DD-DWG-S3A-1211 for wayfinding road marking positioning information.
 - PS# Proposed traffic sign(s). Refer to drawing 60343287-C0255-DD-DWG-S3A-1210 and 60343287-C0255-DWG-S3A-1211 for additional information.
 - PIB# Proposed belisha beacon. Refer to drawing 60343287-C0255-DD-DWG-S3A-1210 for additional information.
 - PMEB# Proposed westminster bollard. Refer to drawing 60343287-C0255-DD-DWG-S3A-1210 for additional information.
 - PB# Proposed steel bollard. Refer to drawing 60343287-C0255-DD-DWG-S3A-1210 for additional information.

All dimensions quoted for proposed longitudinal lane markings shall be measured to the centre line of the marking.

All cycle logos along the route to be refreshed.

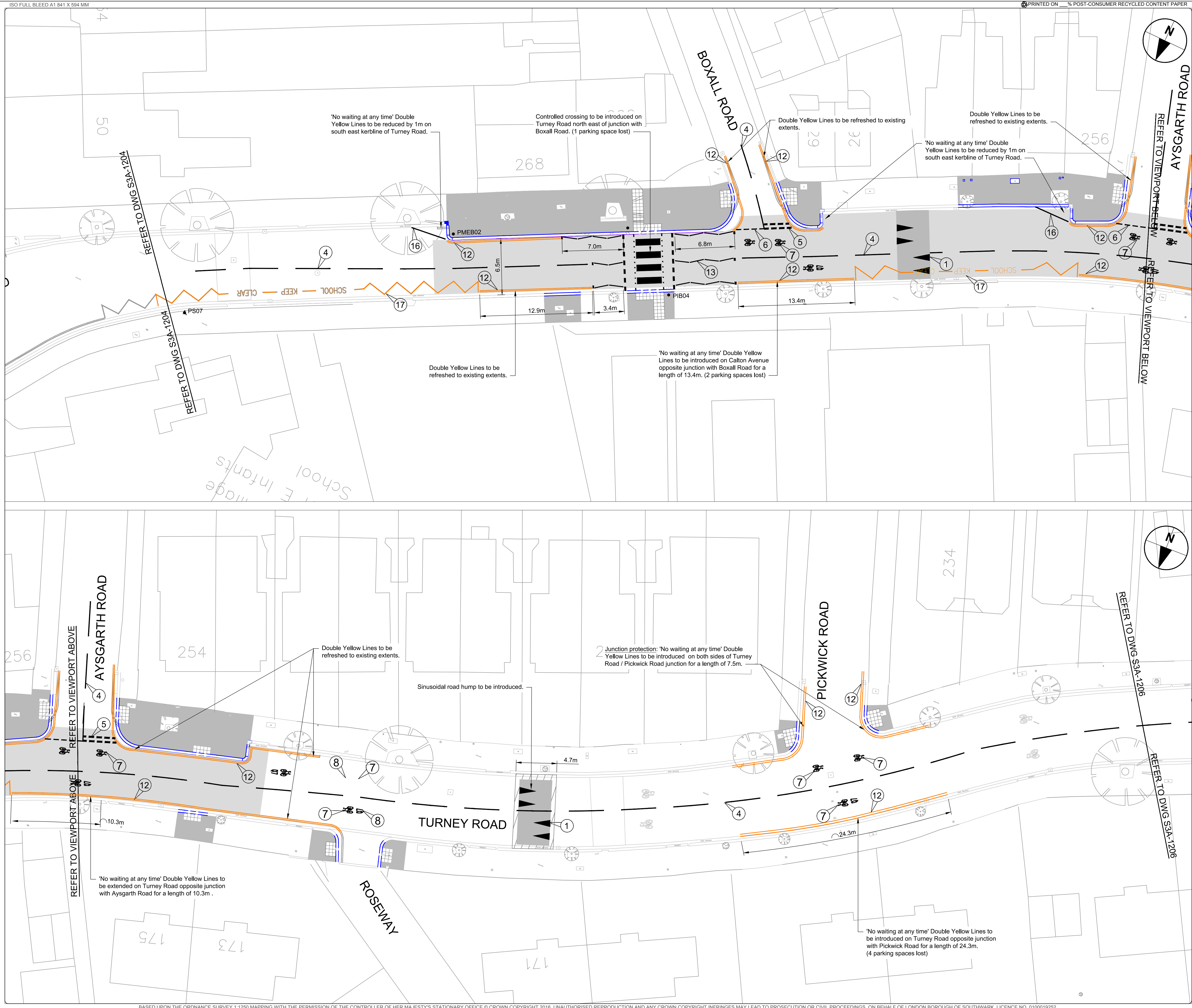
C	14/07/2017	Amendments as per RSA and buildability meeting FOR CONSTRUCTION	CSS	MF	JE
B	19/05/2017	No Changes	CSS	AG	AGB
A	28/04/2017	Amendments as per comments (Sheets 3 to 8)	CSS	AG	AGB
A	21/04/2017	TMO comments added	CSS/MB	AG	AGB
REV	DATE	REVISION DESCRIPTION / DETAILS	DRN	CHKD	APPRVD



PROJECT: QUIETWAY 7 - ELEPHANT & CASTLE TO CRYSTAL PALACE (QW3b)

TITLE: SECTION 3A - TRAFFIC SIGNS & ROAD MARKINGS (SHEET 4 OF 8)

CONTRACT NO:	60343287-C0255	DRAWN	MB
SCALE:	1:200 @ A1	DESIGNED	MB
DRAWING NO:	60343287-C0255-DD-DWG-S3A-1204	CHECKED	AG
DATE DRAWN:	DECEMBER 2016	APPROVED	AGB
DATE ISSUED:	14/02/2017	REV:	C



LEGEND / NOTES.

- NOTES:**
- THIS DRAWING IS TO READ IN CONJUNCTION WITH ALL CONWAY AECOM DRAWINGS FOR JOB REF 60343287-C0255 LISTED ON THE SCHEME DOCUMENT ISSUE SHEET.
 - THE CONTRACTOR SHALL BE RESPONSIBLE FOR ESTABLISHING THE POSITION AND STATUS OF ALL STATUTORY UTILITY APPARATUS PRIOR TO COMMENCING ANY WORKS. THE CONTRACTOR SHALL COORDINATE AND UNDERTAKE ALL WORKS IN CONJUNCTION AND AGREEMENT WITH THE AFFECTED STATUTORY UTILITY COMPANIES AS NECESSARY.
 - ALL NEW SIGNS AND ROAD MARKINGS ARE TO BE LAID IN ACCORDANCE WITH "THE TRAFFIC SIGNS REGULATIONS AND GENERAL DIRECTIONS 2016" (TSRGD).
 - ALL ITEMS SHOWN IN GREY ARE EXISTING AND ARE TO REMAIN UNLESS STATED OTHERWISE. ALL PROPOSED ITEMS ARE SHOWN IN BLACK.
 - DO NOT SCALE FROM THIS DRAWING. USE FIGURED DIMENSIONS ONLY. ALL DIMENSIONS AND LEVELS ARE IN METRES, UNLESS OTHERWISE STATED.
 - DESIGN BASED ON TOPOGRAPHICAL SURVEY OBTAINED FROM LB SOUTHWARK. LEVELS AND SETTING OUT TO BE CHECKED ON SITE BY CONTRACTOR PRIOR TO THE START OF WORKS.
 - CO-ORDINATE WITH LBS STREET LIGHTING TEAM FOR PROPOSED SIGN COLUMN REMOVAL AND PROPOSED NEW SIGNS.

- KEY:**
- Proposed kerb line. Refer to drawings 60343287-C0255-DD-DWG-S3A-1101-1106 for additional information.
 - Proposed footway. Refer to drawings 60343287-C0255-DD-DWG-S3A-1101-1106 for additional information.
 - Proposed raised table construction. Refer to drawings 60343287-C0255-DD-DWG-S3A-1101-1106 for additional information.
 - Proposed sinusoidal road hump construction. Refer to drawings 60343287-C0255-DD-DWG-S3A-1101-1106 for additional information.
 - Proposed carriageway surface. Refer to drawings 60343287-C0255-DD-DWG-S3A-1101-1106 for additional information.
 - Road marking type reference numbers. Refer to TABLE 1 on drawing 60343287-C0255-DWG-S3A-1201 for additional information. Refer to drawing 60343287-C0255-DD-DWG-S3A-1211 for wayfinding road marking positioning information.
 - PS# Proposed traffic sign(s). Refer to drawing 60343287-C0255-DD-DWG-S3A-1210 and 60343287-C0255-DWG-S3A-1211 for additional information.
 - PIB# Proposed belisha beacon. Refer to drawing 60343287-C0255-DD-DWG-S3A-1210 for additional information.
 - PMEB# Proposed westminster bollard. Refer to drawing 60343287-C0255-DD-DWG-S3A-1210 for additional information.
 - PB# Proposed steel bollard. Refer to drawing 60343287-C0255-DD-DWG-S3A-1210 for additional information.

All dimensions quoted for proposed longitudinal lane markings shall be measured to the centre line of the marking.

All cycle logos along the route to be refreshed.

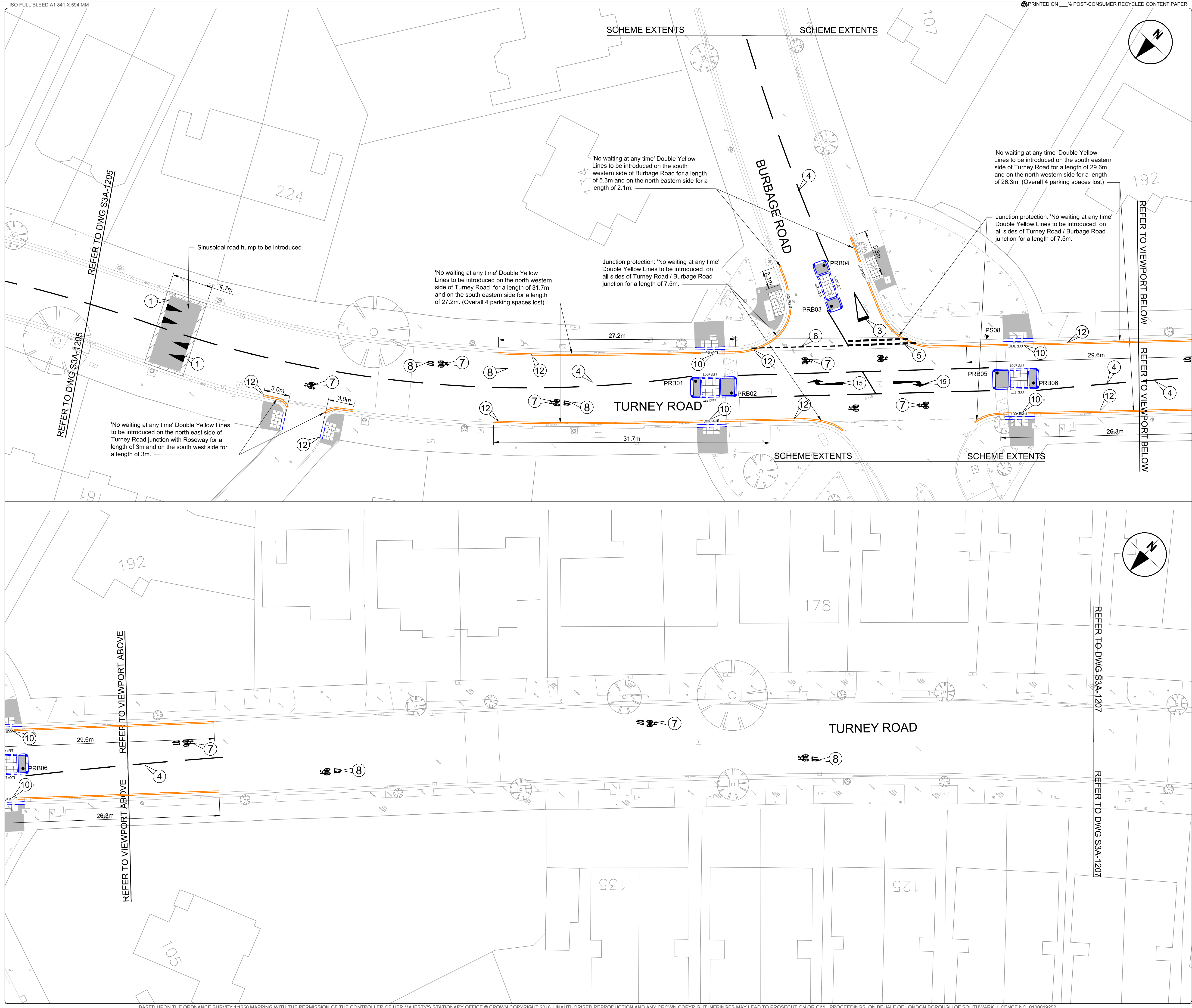
C	14/07/2017	Amendments as per RSA and buildability meeting FOR CONSTRUCTION	CSS	MF	JE
B	19/05/2017	No Changes	CSS	AG	AGB
A'	28/04/2017	Amendments as per comments (Sheets 3 to 8)	CSS	AG	AGB
A	21/04/2017	TMO comments added	CSS/MB	AG	AGB
REV	DATE	REVISION DESCRIPTION / DETAILS	DRN	CHKD	APPRD BY



PROJECT: QUIETWAY 7 - ELEPHANT & CASTLE TO CRYSTAL PALACE (QW3b)

TITLE: SECTION 3A - TRAFFIC SIGNS & ROAD MARKINGS (SHEET 5 OF 7)

CONTRACT NO:	60343287-C0255	DRAWN	MB
SCALE:	1:200 @ A1	DESIGNED	MB
PURPOSE:	FOR CONSTRUCTION	CHECKED	AG
DRAWING NO:	60343287-C0255-DD-DWG-S3A-1205	APPROVED	AGB
DATE DRAWN:	DECEMBER 2016	REV:	C
DATE ISSUED:	14/02/2017		



LEGEND / NOTES.

- NOTES:**
- THIS DRAWING IS TO READ IN CONJUNCTION WITH ALL CONWAY AECOM DRAWINGS FOR JOB REF 60343287-C0255 LISTED ON THE SCHEME DOCUMENT ISSUE SHEET.
 - THE CONTRACTOR SHALL BE RESPONSIBLE FOR ESTABLISHING THE POSITION AND STATUS OF ALL STATUTORY UTILITY APPARATUS PRIOR TO COMMENCING ANY WORKS. THE CONTRACTOR SHALL COORDINATE AND UNDERTAKE ALL WORKS IN CONJUNCTION AND AGREEMENT WITH THE AFFECTED STATUTORY UTILITY COMPANIES AS NECESSARY.
 - ALL NEW SIGNS AND ROAD MARKINGS ARE TO BE LAID IN ACCORDANCE WITH "THE TRAFFIC SIGNS REGULATIONS AND GENERAL DIRECTIONS 2016" (TSRGD).
 - ALL ITEMS SHOWN IN GREY ARE EXISTING AND ARE TO REMAIN UNLESS STATED OTHERWISE. ALL PROPOSED ITEMS ARE SHOWN IN BLACK.
 - DO NOT SCALE FROM THIS DRAWING. USE FIGURED DIMENSIONS ONLY. ALL DIMENSIONS AND LEVELS ARE IN METRES, UNLESS OTHERWISE STATED.
 - DESIGN BASED ON TOPOGRAPHICAL SURVEY OBTAINED FROM LB SOUTHWARK. LEVELS AND SETTING OUT TO BE CHECKED ON SITE BY CONTRACTOR PRIOR TO THE START OF WORKS.
 - CO-ORDINATE WITH LBS STREET LIGHTING TEAM FOR PROPOSED SIGN/COLUMN REMOVAL AND PROPOSED NEW SIGNS.

- KEY:**
- Proposed kerb line. Refer to drawings 60343287-C0255-DD-DWG-S3A-1101-1106 for additional information.
 - Proposed footway. Refer to drawings 60343287-C0255-DD-DWG-S3A-1101-1106 for additional information.
 - Proposed raised table construction. Refer to drawings 60343287-C0255-DD-DWG-S3A-1101-1106 for additional information.
 - Proposed sinusoidal road hump construction. Refer to drawings 60343287-C0255-DD-DWG-S3A-1101-1106 for additional information.
 - Proposed carriageway surface. Refer to drawings 60343287-C0255-DD-DWG-S3A-1101-1106 for additional information.
 - Road marking type reference numbers. Refer to TABLE 1 on drawing 60343287-C0255-DWG-S3A-1201 for additional information. Refer to drawing 60343287-C0255-DD-DWG-S3A-1211 for wayfinding road marking positioning information.
 - PS# Proposed traffic sign(s). Refer to drawing 60343287-C0255-DD-DWG-S3A-1210 and 60343287-C0255-DWG-S3A-1211 for additional information.
 - PIB# Proposed belisha beacon. Refer to drawing 60343287-C0255-DD-DWG-S3A-1210 for additional information.
 - PMEB# Proposed westminster bollard. Refer to drawing 60343287-C0255-DD-DWG-S3A-1210 for additional information.
 - PB# Proposed steel bollard. Refer to drawing 60343287-C0255-DD-DWG-S3A-1210 for additional information.

All dimensions quoted for proposed longitudinal lane markings shall be measured to the centre line of the marking.

All cycle logos along the route to be refreshed.

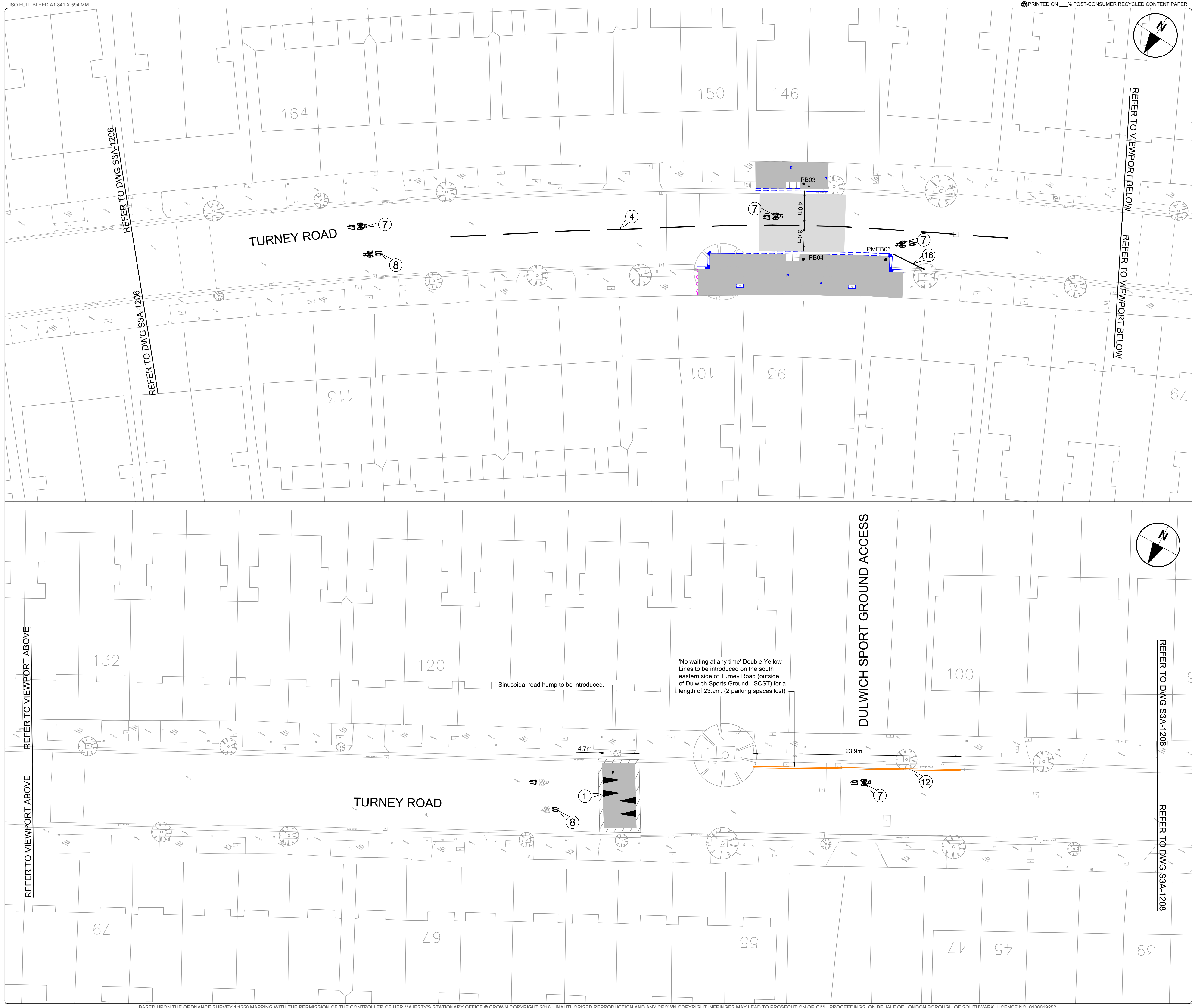
REV	DATE	REVISION DESCRIPTION / DETAILS	DRN	CHKD	APPRVD
C	14/07/2017	Amendments as per RSA and buildability meeting FOR CONSTRUCTION	CSS	MF	JE
B	19/05/2017	No Changes	CSS	AG	AGB
A*	28/04/2017	Amendments as per comments (Sheets 3 to 8)	CSS	AG	AGB
A	21/04/2017	TMO comments added	CSS/MB	AG	AGB



PROJECT: QUIETWAY 7 - ELEPHANT & CASTLE TO CRYSTAL PALACE (QW3b)

TITLE: SECTION 3A - TRAFFIC SIGNS & ROAD MARKINGS (SHEET 6 OF 8)

CONTRACT NO:	60343287-C0255	DRAWN	MB
SCALE:	1:200 @ A1	DESIGNED	MB
DRAWING NO:	60343287-C0255-DD-DWG-S3A-1206	CHECKED	AG
DATE DRAWN:	DECEMBER 2016	APPROVED	AGB
DATE ISSUED:	14/02/2017	REV:	C



LEGEND / NOTES.

- NOTES:**
- THIS DRAWING IS TO READ IN CONJUNCTION WITH ALL CONWAY AECOM DRAWINGS FOR JOB REF 60343287-C0255 LISTED ON THE SCHEME DOCUMENT ISSUE SHEET.
 - THE CONTRACTOR SHALL BE RESPONSIBLE FOR ESTABLISHING THE POSITION AND STATUS OF ALL STATUTORY UTILITY APPARATUS PRIOR TO COMMENCING ANY WORKS. THE CONTRACTOR SHALL COORDINATE AND UNDERTAKE ALL WORKS IN CONJUNCTION AND AGREEMENT WITH THE AFFECTED STATUTORY UTILITY COMPANIES AS NECESSARY.
 - ALL NEW SIGNS AND ROAD MARKINGS ARE TO BE LAID IN ACCORDANCE WITH "THE TRAFFIC SIGNS REGULATIONS AND GENERAL DIRECTIONS 2016" (TSRGD).
 - ALL ITEMS SHOWN IN GREY ARE EXISTING AND ARE TO REMAIN UNLESS STATED OTHERWISE. ALL PROPOSED ITEMS ARE SHOWN IN BLACK.
 - DO NOT SCALE FROM THIS DRAWING. USE FIGURED DIMENSIONS ONLY. ALL DIMENSIONS AND LEVELS ARE IN METRES, UNLESS OTHERWISE STATED.
 - DESIGN BASED ON TOPOGRAPHICAL SURVEY OBTAINED FROM LB SOUTHWARK. LEVELS AND SETTING OUT TO BE CHECKED ON SITE BY CONTRACTOR PRIOR TO THE START OF WORKS.
 - CO-ORDINATE WITH LBS STREET LIGHTING TEAM FOR PROPOSED SIGN COLUMN REMOVAL AND PROPOSED NEW SIGNS.

- KEY:**
- Proposed kerb line. Refer to drawings 60343287-C0255-DD-DWG-S3A-1101-1106 for additional information.
 - Proposed footway. Refer to drawings 60343287-C0255-DD-DWG-S3A-1101-1106 for additional information.
 - Proposed raised table construction. Refer to drawings 60343287-C0255-DD-DWG-S3A-1101-1106 for additional information.
 - Proposed sinusoidal road hump construction. Refer to drawings 60343287-C0255-DD-DWG-S3A-1101-1106 for additional information.
 - Proposed carriageway surface. Refer to drawings 60343287-C0255-DD-DWG-S3A-1101-1106 for additional information.
 - Road marking type reference numbers. Refer to TABLE 1 on drawing 60343287-C0255-DWG-S3A-1201 for additional information. Refer to drawing 60343287-C0255-DD-DWG-S3A-1211 for wayfinding road marking positioning information.
 - PS# Proposed traffic sign(s). Refer to drawing 60343287-C0255-DD-DWG-S3A-1210 and 60343287-C0255-DWG-S3A-1211 for additional information.
 - PIB# Proposed belisha beacon. Refer to drawing 60343287-C0255-DD-DWG-S3A-1210 for additional information.
 - PME03# Proposed westminster bollard. Refer to drawing 60343287-C0255-DD-DWG-S3A-1210 for additional information.
 - PB# Proposed steel bollard. Refer to drawing 60343287-C0255-DD-DWG-S3A-1210 for additional information.

All dimensions quoted for proposed longitudinal lane markings shall be measured to the centre line of the marking.

All cycle logos along the route to be refreshed.

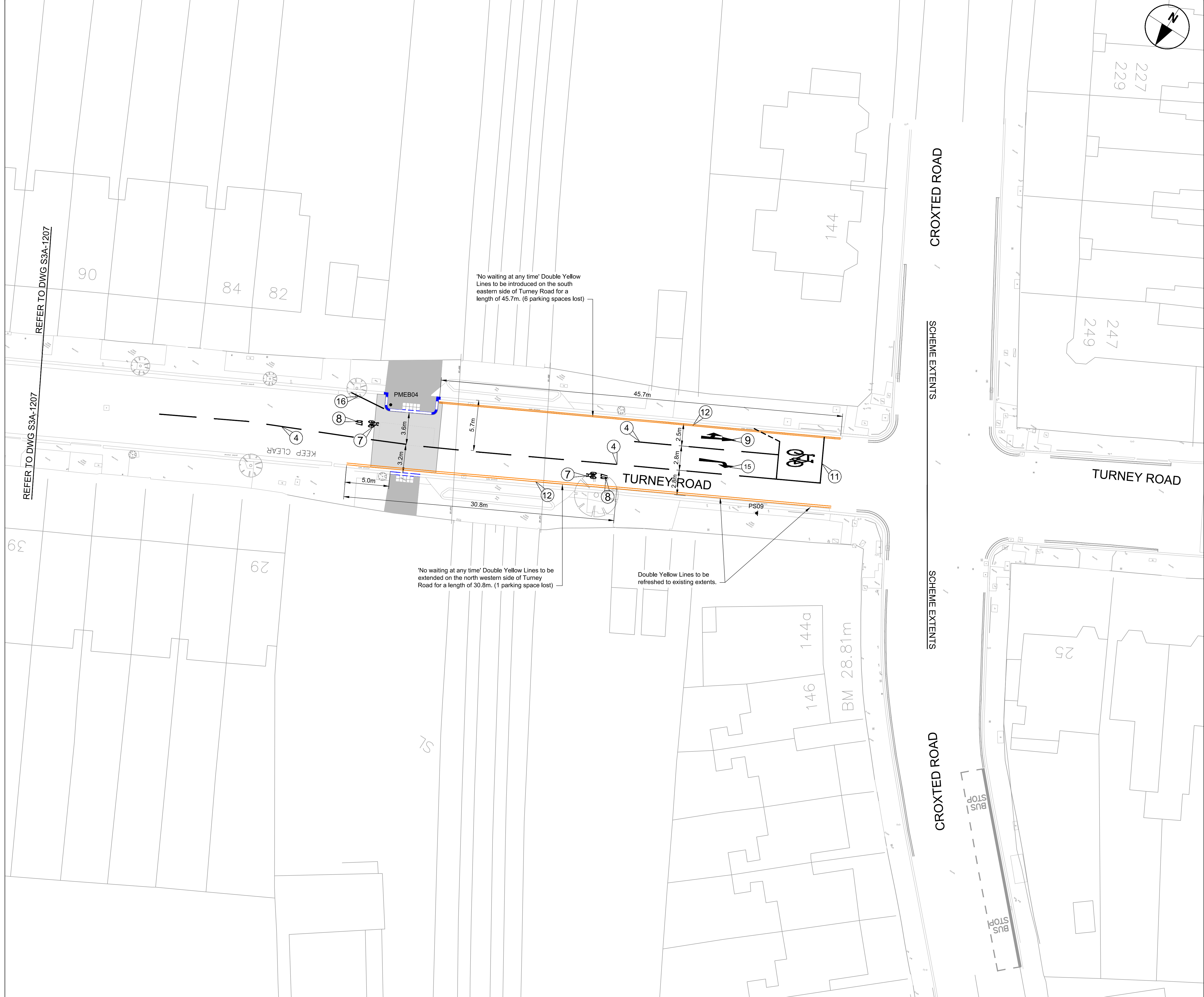
C	14/07/2017	Amendments as per RSA and buildability meeting FOR CONSTRUCTION	CSS	MF	JE
B	19/05/2017	No Changes	CSS	AG	AGB
A	28/04/2017	Amendments as per comments (Sheets 3 to 8)	CSS	AG	AGB
A	21/04/2017	TMO comments added	CSS/MB	AG	AGB
REV	DATE	REVISION DESCRIPTION / DETAILS	DRN BY	CHKD BY	APPRD BY



PROJECT: QUIETWAY 7 - ELEPHANT & CASTLE TO CRYSTAL PALACE (QW3b)

TITLE: SECTION 3A - TRAFFIC SIGNS & ROAD MARKINGS (SHEET 7 OF 8)

CONTRACT NO:	60343287-C0255	DRAWN	MB
SCALE:	1:200 @ A1	DESIGNED	MB
DRAWING NO:	60343287-C0255-DD-DWG-S3A-1207	CHECKED	AG
DATE DRAWN:	DECEMBER 2016	APPROVED	AGB
DATE ISSUED:	14/02/2017	REV:	C



LEGEND / NOTES.

- NOTES:**
- THIS DRAWING IS TO READ IN CONJUNCTION WITH ALL CONWAY AECOM DRAWINGS FOR JOB REF 60343287-C0255 LISTED ON THE SCHEME DOCUMENT ISSUE SHEET.
 - THE CONTRACTOR SHALL BE RESPONSIBLE FOR ESTABLISHING THE POSITION AND STATUS OF ALL STATUTORY UTILITY APPARATUS PRIOR TO COMMENCING ANY WORKS. THE CONTRACTOR SHALL COORDINATE AND UNDERTAKE ALL WORKS IN CONJUNCTION AND AGREEMENT WITH THE AFFECTED STATUTORY UTILITY COMPANIES AS NECESSARY.
 - ALL NEW SIGNS AND ROAD MARKINGS ARE TO BE LAID IN ACCORDANCE WITH "THE TRAFFIC SIGNS REGULATIONS AND GENERAL DIRECTIONS 2016" (TSRGD).
 - ALL ITEMS SHOWN IN GREY ARE EXISTING AND ARE TO REMAIN UNLESS STATED OTHERWISE. ALL PROPOSED ITEMS ARE SHOWN IN BLACK.
 - DO NOT SCALE FROM THIS DRAWING. USE FIGURED DIMENSIONS ONLY. ALL DIMENSIONS AND LEVELS ARE IN METRES, UNLESS OTHERWISE STATED.
 - DESIGN BASED ON TOPOGRAPHICAL SURVEY OBTAINED FROM LB SOUTHWARK. LEVELS AND SETTING OUT TO BE CHECKED ON SITE BY CONTRACTOR PRIOR TO THE START OF WORKS.
 - CO-ORDINATE WITH LBS STREET LIGHTING TEAM FOR PROPOSED SIGN COLUMN REMOVAL AND PROPOSED NEW SIGNS.

- KEY:**
- Proposed kerb line. Refer to drawings 60343287-C0255-DD-DWG-S3A-1101-1106 for additional information.
 - Proposed footway. Refer to drawings 60343287-C0255-DD-DWG-S3A-1101-1106 for additional information.
 - Proposed raised table construction. Refer to drawings 60343287-C0255-DD-DWG-S3A-1101-1106 for additional information.
 - Proposed sinusoidal road hump construction. Refer to drawings 60343287-C0255-DD-DWG-S3A-1101-1106 for additional information.
 - Proposed carriageway surface. Refer to drawings 60343287-C0255-DD-DWG-S3A-1101-1106 for additional information.
 - Road marking type reference numbers. Refer to TABLE 1 on drawing 60343287-C0255-DWG-S3A-1201 for additional information. Refer to drawing 60343287-C0255-DD-DWG-S3A-1211 for wayfinding road marking positioning information.
 - PS# Proposed traffic sign(s). Refer to drawing 60343287-C0255-DD-DWG-S3A-1210 and 60343287-C0255-DWG-S3A-1211 for additional information.
 - PIB# Proposed belisha beacon. Refer to drawing 60343287-C0255-DD-DWG-S3A-1210 for additional information.
 - PMEB# Proposed westminster bollard. Refer to drawing 60343287-C0255-DD-DWG-S3A-1210 for additional information.
 - PB# Proposed steel bollard. Refer to drawing 60343287-C0255-DD-DWG-S3A-1210 for additional information.

All dimensions quoted for proposed longitudinal lane markings shall be measured to the centre line of the marking.

All cycle logos along the route to be refreshed.

C	14/07/2017	Amendments as per RSA and buildability meeting FOR CONSTRUCTION	CSS	MF	JE
B	19/05/2017	No Changes	CSS	AG	AGB
A*	28/04/2017	Amendments as per comments (Sheets 3 to 8)	CSS	AG	AGB
A	21/04/2017	TMO comments added	CSS/MB	AG	AGB
REV	DATE	REVISION DESCRIPTION / DETAILS	DWN BY	CHKD BY	APPRVD BY



PROJECT: QUIETWAY 7 - ELEPHANT & CASTLE TO CRYSTAL PALACE (QW3b)

TITLE: SECTION 3A - TRAFFIC SIGNS & ROAD MARKINGS (SHEET 8 OF 8)

CONTRACT NO:	60343287-C0255	DRAWN	MB
SCALE:	1:200 @ A1	DESIGNED	MB
DRAWING NO:	60343287-C0255-DD-DWG-S3A-1208	CHECKED	AG
DATE DRAWN:	DECEMBER 2016	APPROVED	AGB
DATE ISSUED:	14/02/2017	REV:	C