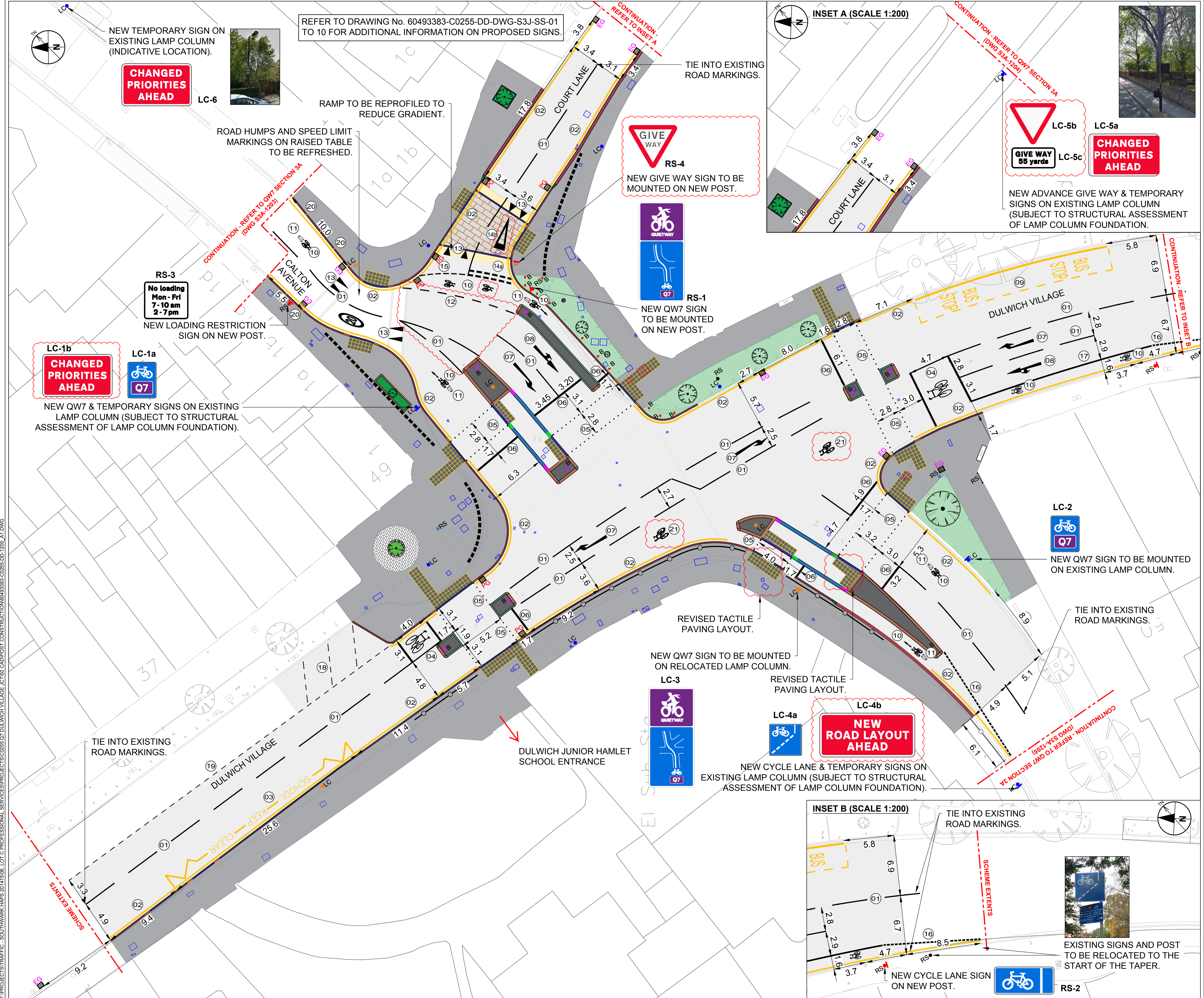
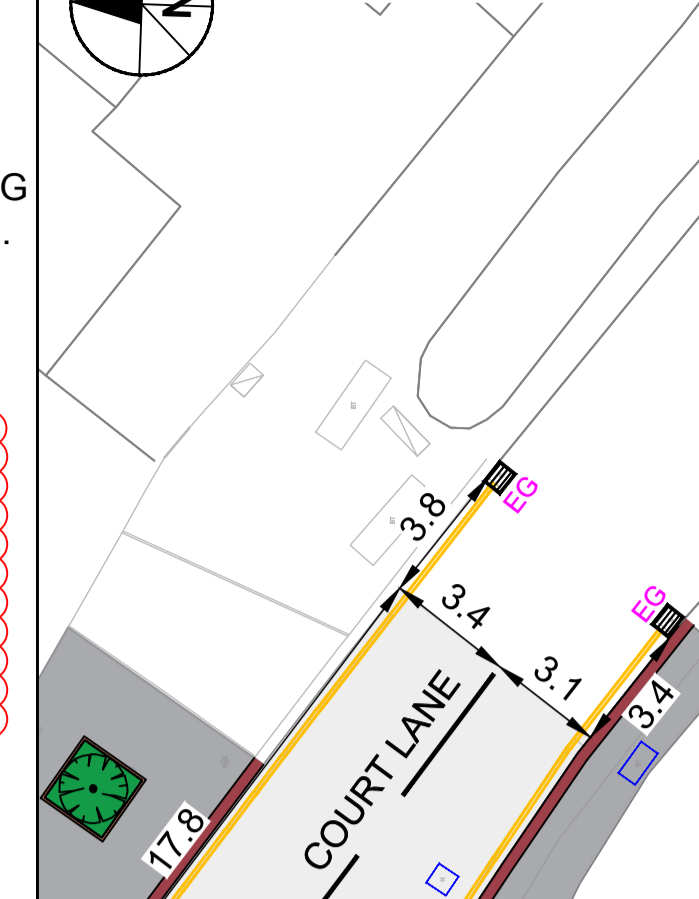


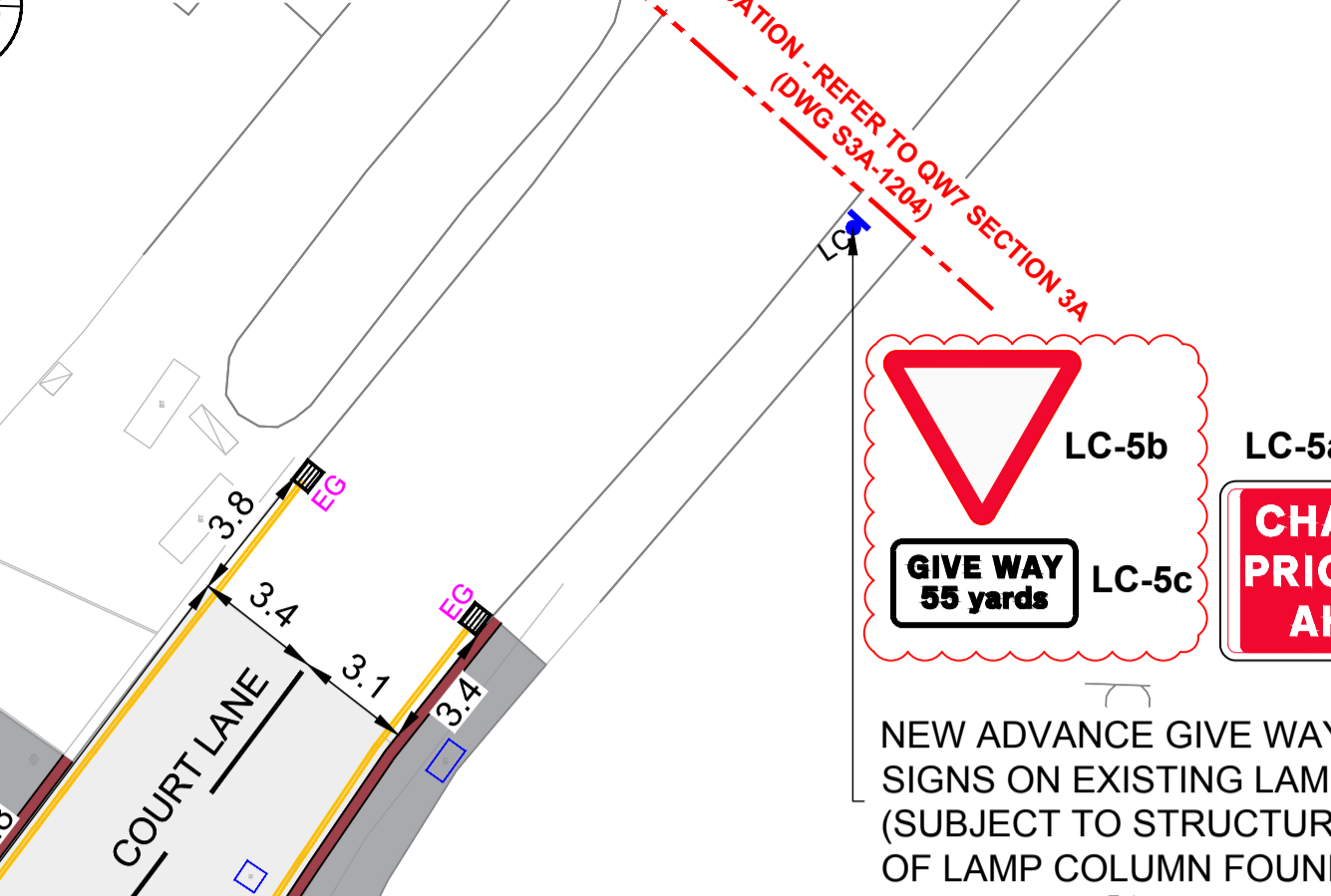
LEGEND / NOTES.



INSET A (SCALE 1:200)



INSET B (SCALE 1:200)



- NOTES**
- All dimensions are in metres unless otherwise stated.
  - This drawing is based on a topographical survey obtained by LB Southwark Council.
  - This drawing is to be read in conjunction with all CONWAY-AECOM drawings for job ref. C0255 as listed on the scheme document issue sheet.
  - Traffic Management is to be in accordance with Chapter 8 of the Traffic Signs Manual and Safety at Street Works and Road Works (ACoP).
  - Contractor to maintain access to all properties and businesses at all times or agree alternative access arrangements with stakeholders.
  - This drawing is to be read in conjunction with LB Southwark Streetscape Design Guidance (SSDM) and all relevant contract clauses.
  - All road markings and signs are to be in accordance with the Traffic Signs Regulations & General Directions (TSRGD) 2016.
  - All proportions and form of letters, numerals and other characters are to be in accordance with Schedule 17 of the TSRGD 2016.
  - Single/Double yellow lines to be offset a minimum of 250mm from edge of the kerb.
  - All street furniture except lighting columns should be set a minimum of 450mm from the kerb face. Cycle stands should be set a minimum of 750mm from the kerb face.
- KEY**
- 01 ROAD MARKING REFERENCE. REFER TO DWG No. 60493383-C0255-1200-02 TABLE 1 (ROAD MARKING SCHEDULE).
  - RS EXISTING ROAD SIGN.
  - RS NEW ROAD SIGN AND POST.
  - LC EXISTING LAMP COLUMN.
  - LC PROPOSED LAMP COLUMN LOCATION.
  - DOUBLE YELLOW LINES.
  - WHITE THERMOPLASTIC ROAD MARKINGS.
  - WHITE THERMOPLASTIC ARROW MARKINGS.
  - B NEW BOLLARDS ON TRAFFIC ISLANDS.
  - INITIAL POST STAGE 3 RSA DESIGN CHANGES.

REV	DATE	REVISION DESCRIPTION / DETAILS	DRN	CHKD	APPRVD
1	08/02/18	Post Stage 3 RSA changes clouded.	HP	AGB	KC
D	27/06/17	Included sections of guardrail to be retained.	HP	KC	JE
C	16/06/17	Revised road markings & added one temporary sign.	HP	JE	AGB
B	10/05/17	Loading restriction sign/markings on Calton Avenue.	AEF	JE	AGB
A	06/03/17	Asphalt for traffic carpet construction on Court Lane.	AEF	ABE	AGB



PROJECT:

**QUIETWAY 7  
DULWICH VILLAGE JUNCTION  
(QW3j)**

TITLE:

**SERIES 1200  
ROAD MARKINGS & SIGNS**

CONTRACT NO:	60493383-C0255	DRAWN	AEF
SCALE:	1 : 200 @ A1	DESIGNED	HP
DRAWING NO:	60493383-C0255-DD-DWG-S3J-1200-01	CHECKED	ABE
DATE DRAWN:	JANUARY 2017	APPROVED	AGB
DATE ISSUED:	13 FEBRUARY 2017	REV:	1

**TABLE 1 - ROAD MARKING SCHEDULE (TSRGD 2016)**

REF NO.	DWG NO.	MARK MM	GAP (MM)	WIDTH (MM)	TYPE	COLOUR	COMMENT
01	1004	4000	2000	100	INTERMITTENT	WHITE	HAZARD MARKING
02	1018.1	-	50	50	CONTINUOUS	PRIMROSE YELLOW	DOUBLE YELLOW LINES
03	1027.1	-	-	150	CONTINUOUS	PRIMROSE YELLOW	KEEP CLEAR MARKING
		-	-	-	TEXT	PRIMROSE YELLOW	"SCHOOL KEEP CLEAR" TEXT
04	1001.2	2750	-	1700	SYMBOL	WHITE	CYCLE SYMBOL MARKING (LARGE)
		-	-	200	CONTINUOUS	WHITE	STOPLINE & ADVANCED STOPLINE
05	1055.1	100	500	100	INTERMITTENT	WHITE	STUDS
06	1001	-	-	200	CONTINUOUS	WHITE	STOPLINE
07	1038	4000	-	750	SYMBOL	WHITE	RIGHT TURN ARROW
08	1038	4000	-	850	SYMBOL	WHITE	AHEAD + LEFT ARROW
09	1025.1	1000	1000	100	INTERMITTENT	PRIMROSE YELLOW	BUS STOP CAGE MARKING
		-	-	200	CONTINUOUS	PRIMROSE YELLOW	EDGE OF CARRIAGEWAY AT BUS STOP
		1600	1000	70	TEXT	PRIMROSE YELLOW	"BUS STOP" TEXT
10	1057	1215	-	750	SYMBOL	WHITE	CYCLE SYMBOL MARKING (SMALL)
11	1057	1215	-	750	SYMBOL	WHITE	CYCLE SYMBOL MARKING (SMALL)
		705	150	70	TEXT	WHITE	"Q7" TEXT
12	1010	1000	1000	200	CONTINUOUS	WHITE	EDGE OF CARRIAGEWAY / CYCLE LANE
13	1062	1850(max)	-	750	SYMBOL	WHITE	ROAD HUMP MARKING
14a	1003A	600	300	200	INTERMITTENT	WHITE	GIVE WAY MARKING
14b	1023A	3750	-	1250	SYMBOL	WHITE	GIVE WAY TRIANGLE
15	1009A	600	300	100	INTERMITTENT	WHITE	EDGE OF A CARRIAGEWAY AT JUNCTION
16	1009B	300	150	100	INTERMITTENT	WHITE	EDGE OF A CARRIAGEWAY AT A CYCLE TRACK
17	1049B	-	-	150	CONTINUOUS	WHITE	BOUNDARY OF A MANDATORY CYCLE LANE
18	1028.6	600	600	50	INTERMITTENT	WHITE	ECHELON PARKING BAY
19	1028.6	600	600	50	INTERMITTENT	WHITE	EDGE OF CARRIAGEWAY AT PARKING BAY
20	1019	250	-	100	CONTINUOUS	PRIMROSE YELLOW	KERB TRANSVERSE MARKS
21	1057	1780	-	1100	SYMBOL	WHITE	CYCLE SYMBOL MARKING (MEDIUM)

1	08/02/18	Post Stage 3 RSA changes.	HP	AGB	KC
D	27/06/17	No changes.	HP	KC	JE
C	16/06/17	No changes.	HP	JE	AGB
B	10/05/17	Loading restriction sign/markings on Calton Avenue.	AEF	JE	AGB
A	06/03/17	No changes.	AEF	ABE	AGB
REV	DATE	REVISION DESCRIPTION / DETAILS	DRAWN BY	CHKD BY	APPRVD BY



PROJECT: QUIETWAY 7  
DULWICH VILLAGE JUNCTION (QW3j)

TITLE: SERIES 1200  
ROAD MARKINGS & SIGNS  
SCHEDULE

CONTRACT NO:	60493383-C0255	DRAWN	AEF
SCALE:	1 : 200 @ A1	CHECKED	ABE
PURPOSE:	CONSTRUCTION	APPROVED	AGB
DRAWING NO:	60493383-C0255-DD-DWG-S3J-1200-02	REV:	1
DATE DRAWN:	JANUARY 2017	DATE ISSUED:	13 FEBRUARY 2017

F:\PROJECTS\TRAFFIC - SOUTHWARK\MAPS 2014\1506 - LOT C PROFESSIONAL SERVICES\PROJECTS\0255 OF DULWICH VILLAGE - CT180 CAD\POST CONSTRUCTION\060493383-C0255-DD-1200-A1.DWG