

# Public notice

## Pedal cycle 'Quietway' route Q14: Tanner Street

*The London Borough of Southwark (Prescribed routes) (Pedal cycle quietways) (No. 9) Traffic Order 2017*

1. Southwark Council hereby GIVES NOTICE that it proposes to make the above orders under sections 6 and 124 of the Road Traffic Regulation Act 1984<sup>1</sup>.
2. The effect of this order will be:-  
to introduce a new north-eastbound segregated contra-flow cycle lane in TANNER STREET; from a point directly opposite the south-eastern kerb-line of Maltby Street, at its junction with Tanner Street, and extending north-eastwards for a distance of 35m, parallel to the northern kerb-line of Tanner Street and marked by a segregating kerb, as part of a scheme of pedal cycle priority 'Quietway'.
3. For more information contact Albert Ang of the council's Highways Transport Projects team: telephone 020 7525 4611 or e-mail [albert.ang@southwark.gov.uk](mailto:albert.ang@southwark.gov.uk)
4. Copies of this notice, the proposed orders, a statement of the council's reasons for making this change and plans may be found online at <http://www.southwark.gov.uk/trafficorders> or by scanning the QR code below, paper copies may be obtained from or viewed at Highways, Environment, 3<sup>rd</sup> floor hub 2, 160 Tooley Street, London SE1 2QH. Please telephone 020 7525 3497 for details.
5. Anyone wishing to object to or make any other representations regarding the proposal, may use the form labelled '*Parking - Road traffic and highway schemes - responding to statutory consultation notices*' at [https://forms.southwark.gov.uk/ShowForm.asp?fm\\_fid=1081&np=1](https://forms.southwark.gov.uk/ShowForm.asp?fm_fid=1081&np=1) or send a statement in writing to: the Traffic orders officer, Highways, Southwark Council, Environment, P.O. Box 64529, London SE1P 5LX or by e-mail to [traffic.orders@southwark.gov.uk](mailto:traffic.orders@southwark.gov.uk) quoting reference 'TMO1718-017 Q14 Tanner Street' by 21 December 2017. Please note that if you wish to object to this proposal you must state the grounds on which your objection is made.
6. When making an objection or representation, please be aware that this may be communicated to other people who may be affected. Information provided in response to this consultation, including in some circumstances personal information, may also be subject to publication or disclosure under the requirements of current access to information legislation.

Dated 30 November 2017

**Nicky Costin**

Parking and network management business unit manager  
Regulatory services



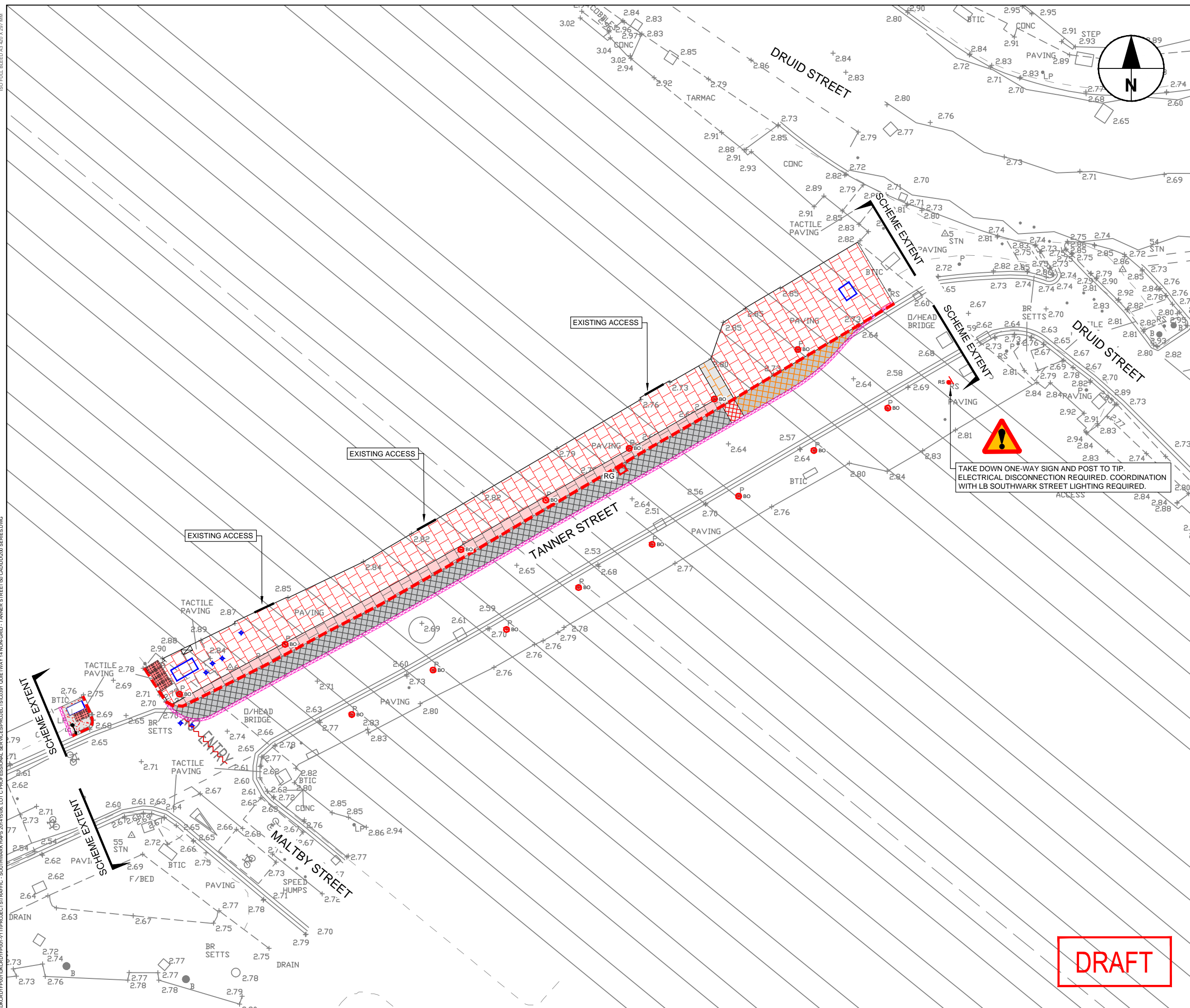
---

<sup>1</sup> [1984 c.27](#)

CONWAY AECOM

# QUIETWAY 14 NON-GRID TANNER STREET DETAILED DESIGN (DRAFT)

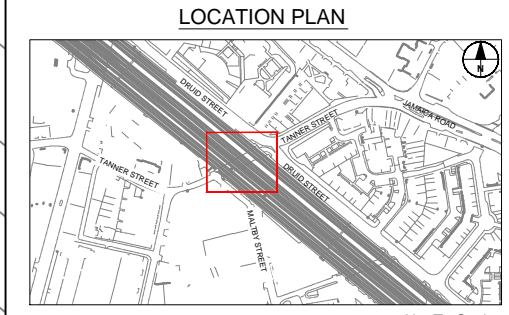
Submitted by: ISMAEL RUIZ DE TEMINO  
Submitted on: 17/08/2017



### LEGEND

- Take up paving slabs to tip and excavate existing footway to a total depth of 245mm
- Take up paving slabs to tip and excavate existing footway to a total depth of 340mm
- Excavate existing carriageway to a total depth of 220mm and dispose of material to contractor licensed tip
- Excavate existing footway to a total depth of 440mm and dispose of material to contractor licensed tip
- Excavate existing carriageway to a total depth of 380mm and dispose of material to contractor licensed tip
- Excavate existing carriageway to a total depth of 145mm and dispose of material to contractor licensed tip
- Concrete reinstatement - minimum excavation of concrete footway around new tactile paving
- Take up tactile slabs and excavate to a total depth of 440mm
- Take up existing kerb to tip
- Saw cut existing carriageway to a maximum depth of 100mm
- Existing bollard to be removed
- Existing sign and post to be removed
- Utility covers to be adjusted to new levels. All footway covers to be converted into recess covers.
- Redundant gully - Refer to series 500
- Existing road marking to be removed by mechanical means
- Existing control box

- ### NOTES
- This drawing is to be read in conjunction with all CONWAY AECOM drawings for job reference C0391 as listed on the document issue sheet.
  - All dimensions are in metres unless otherwise stated.
  - Traffic management is to be in accordance with Chapter 8 of the Traffic Signs Manual and Safety at Street Works and Road Works A Code of Practice.
  - Contractor to scan for utility services prior to commencement of works and refer to utility records.
  - Design based on topographical surveys undertaken by David J Webb Surveys Ltd in 2015.
  - Kerb conditions to be assessed on site. If considered adequate for reuse, kerbs are to be stored on site or in contractor's store for immediate use. Otherwise kerbs to be disposed to contractor's licensed tip.
  - Contractor and LBS to liaise with Network Rail.



REV	DATE	REVISION DESCRIPTION / DETAILS	DRN BY	CHKD BY	APPRVD BY

Shaping Southwark's Highways  
160 TOOLEY STREET LONDON SE1P 5LX

PROJECT: **QUIETWAY 14 NON-GRID  
TANNER STREET DETAILED DESIGN**

TITLE: **SERIES 200 - SITE CLEARANCE  
SHEET 1 OF 1**

CONTRACT NO:	60493383-C0391	DRAWN:	IF
SCALE:	1 : 200 @ A3	DESIGNED:	IR
DRAWING NO:	60493383-C0391-200-01	CHECKED:	JE
DATE DRAWN:	AUGUST 2017	APPROVED:	AGB
DATE ISSUED:	17 AUGUST 2017	REV:	0

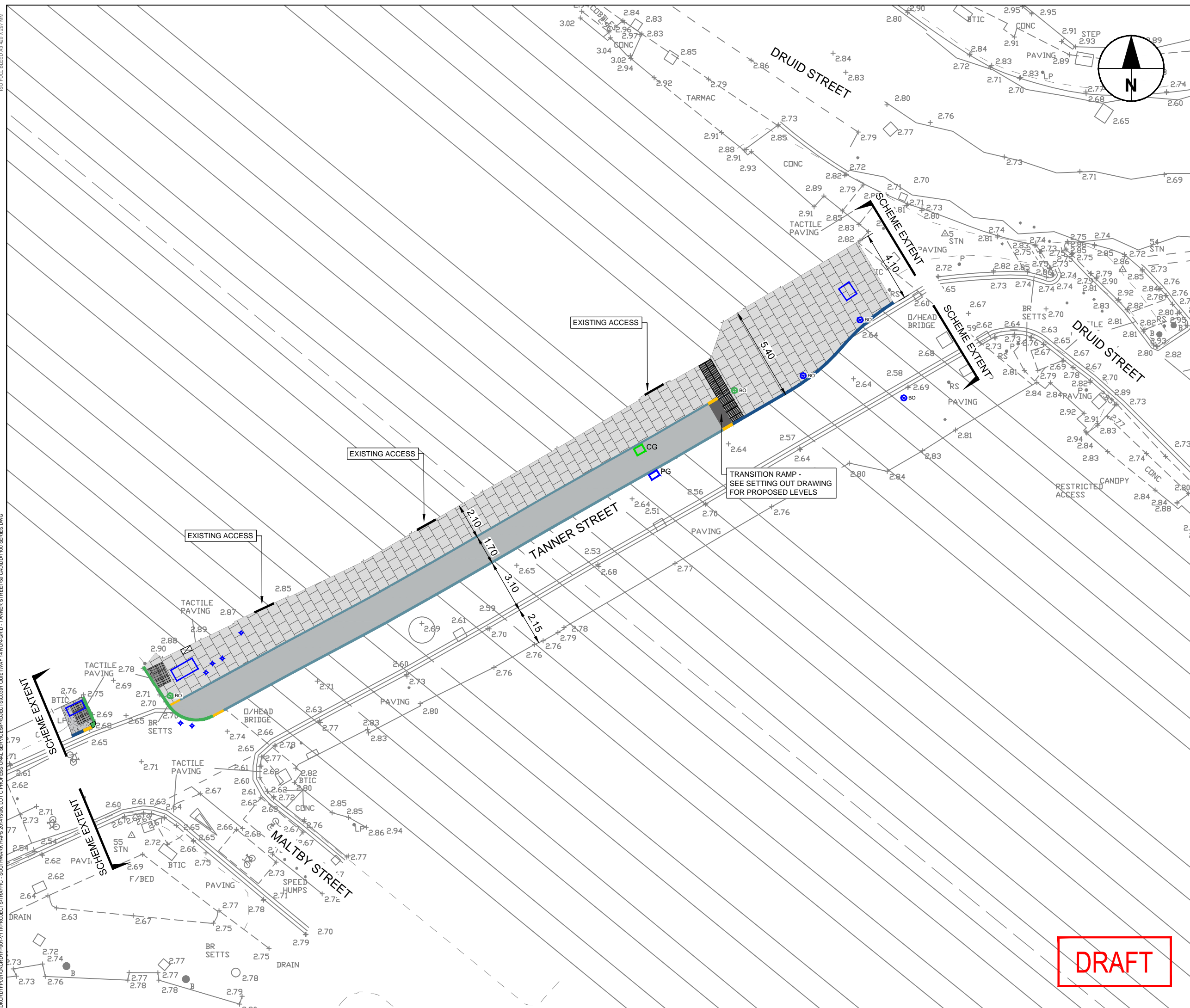
DRAFT

ISO FULL BLEED A3 420 X 297MM  
I:\MCD\PROJECTS\TRAFFIC - SOUTHWARK\HRS 20141506\LOT 0 PROFESSIONAL SERVICES\PROJECTS\C0391 QUIETWAY 14 NON-GRID - TANNER STREET\DWG\CADD\200 SERIES.DWG









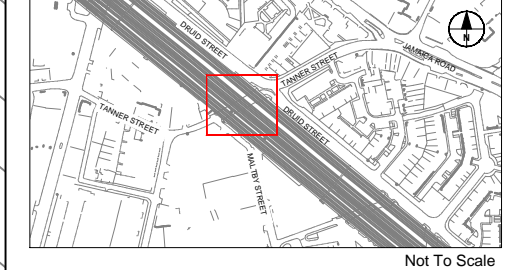
**LEGEND**

- Type designation K15-T1 (N/S) kerb. Colour to be silver grey. Upstand to be 100mm. To be installed on a M1 foundation.
- Type designation K15-T1 (L/S) kerb. Colour to be silver grey. Upstand to be 60mm. To be installed on a M1 foundation.
- Type designation K15-T1 (L/S) kerb. Colour to be silver grey. Upstand to be 0mm. To be installed on a P foundation.
- Type designation KO-30(L) quadrant kerb. Colour to be silver grey. Upstand to be 0mm. To be installed on a P foundation.
- Type designation K15-T1 (N/S-D1) & K15-T1 (N/S-D2) kerbs. Colour to be silver grey. Upstand to vary as per levels in Drawing 60493383-C0391-SO-01. To be installed on a M1 foundation.
- Stepped Cycle Track - Refer to Standard Detail E
- Precast Concrete Flag Unbound Footway Construction - Refer to Standard Detail A
- Concrete footway reinstatement - Refer to Detail D
- Tactile Surface (Blister - uncontrolled crossing) - Refer to Standard Detail B
- Tactile Surface (Ladder/tramline) - Refer to Standard Detail C
- Utility covers to be adjusted to new levels. All footway covers to be converted into recess covers.
- Manchester Bollard - Refer to Standard Detail F
- Manchester Bollard with sign holder/s - Refer to Standard Detail G
- Proposed Gully - Refer to Series 500
- Proposed Chute Gully - Refer to Series 500
- Existing control box

**NOTES**

1. This drawing is to be read in conjunction with all CONWAY AECOM drawings for job reference C0391 as listed on the document issue sheet.
2. Contractor to scan for services prior to commencement of the works.
3. Kerb conditions to be assessed on site. If considered adequate for reuse, kerbs are to be stored on site or in contractor's store for immediate use. Otherwise kerbs to be disposed to contractor's licensed tip.
4. Design based on topographical surveys undertaken by David J Webb Surveys Ltd in 2015.
5. Do not scale from the drawing.
6. All kerbs to be as Volume 2, Annex D, Drawing LBS/C/005 and Appendix 11/1. Kerb colour to be as Appendix 11/1. Kerb foundations to be as Volume 2, Annex D, drawing LBS/C/010 except that concrete shall be ST4 as cl.2602.
7. Contractor and LBS to liaise with Network Rail.

**LOCATION PLAN**



Not To Scale

REV	DATE	REVISION DESCRIPTION / DETAILS	DRN BY	CHKD BY	APPRVD BY

Shaping Southwark's Highways  
160 TOOLEY STREET LONDON SE1P 5LX

PROJECT:  
**QUIETWAY 14 NON-GRID  
TANNER STREET DETAILED DESIGN**

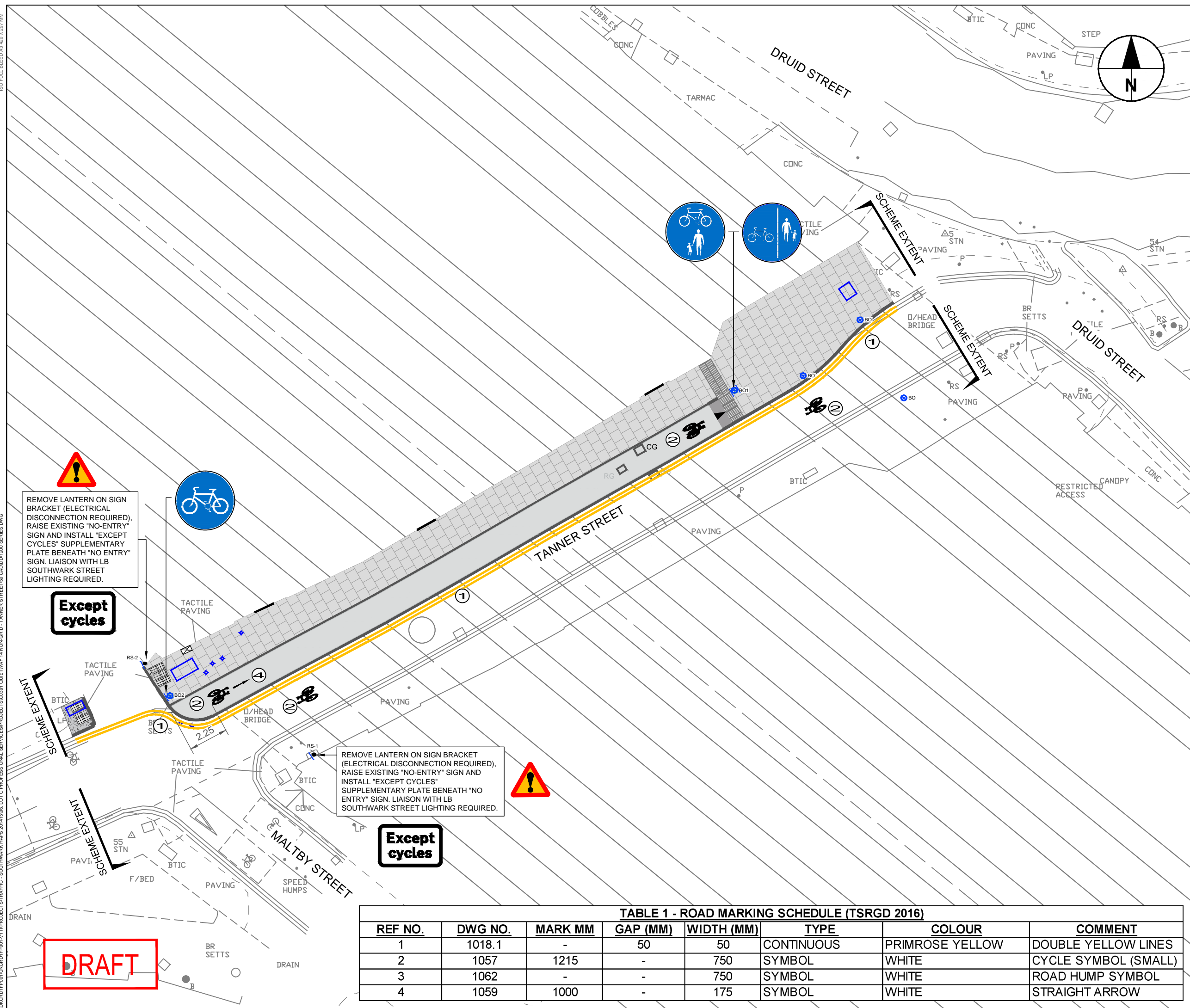
TITLE:  
**SERIES 900 & 1100 - PAVEMENT, KERBS &  
FOOTWAYS  
SHEET 1 OF 1**

CONTRACT NO:	60493383-C0391	DRAWN	IF
SCALE:	1 : 200 @ A3	PURPOSE:	DISCUSSION
DRAWING NO:	60493383-C0391-1100-01	CHECKED	JE
DATE DRAWN:	AUGUST 2017	APPROVED	AGB
DATE ISSUED:	17 AUGUST 2017	REV:	0

**DRAFT**

I:\MCD\PROJECTS\TRAFFIC - SOUTHWARK\HRS 2014\1606 LOT 0 PROFESSIONAL SERVICES\PROJECTS\C0391 QUIETWAY 14 NON-GRID - TANNER STREET\DWG\1100 SERIES.DWG  
 ISO FULL BLEED A3 420 X 297MM

ISO FULL BLEED A3 420 X 297 MM  
 U:\CADD\PROJECTS\TRAFFIC - SOUTHWARK\HRS 20141506\LOT 0\PROFESSIONAL SERVICES\PROJECTS\0391 QUIETWAY 14 NON-GRID - TANNER STREET\03 CAD\DD1\200 SERIES.DWG



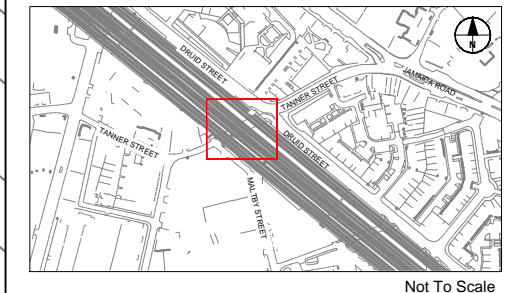
**LEGEND**

- ① Road marking reference (Refer to Table 1)
- Primrose yellow thermoplastic road markings
- | New sign - Refer to Traffic Sign Schedule

**NOTES**

1. This drawing is to be read in conjunction with all CONWAY AECOM drawings for job reference C0391 as listed on the document issue sheet.
2. All road markings and signs are to be in accordance with the Traffic Sign Regulations and General Directions (TSRGD 2016).
3. All signs and street furniture should be set a minimum of 450mm from the kerb face.
4. Design based on topographical surveys undertaken by David J Webb Surveys Ltd in 2015.
5. Do not scale from the drawing.
6. Contractor and LBS to liaise with Network Rail.

**LOCATION PLAN**



Not To Scale

REV	DATE	REVISION DESCRIPTION / DETAILS	DRN BY	CHKD BY	APRVD BY



160 TOOLEY STREET LONDON SE1P 5LX

PROJECT: QUIETWAY 14 NON-GRID  
TANNER STREET DETAILED DESIGN

TITLE: SERIES 1200 - SIGNS & ROAD MARKINGS  
SHEET 1 OF 1

CONTRACT NO:	60493383-C0391	DRAWN	IF
SCALE:	1 : 200 @ A3	CHECKED	JE
DRAWING NO:	60493383-C0391-1200-01	APPROVED	AGB
DATE DRAWN:	AUGUST 2017	REV:	0
DATE ISSUED:	17 AUGUST 2017		

**TABLE 1 - ROAD MARKING SCHEDULE (TSRGD 2016)**

REF NO.	DWG NO.	MARK MM	GAP (MM)	WIDTH (MM)	TYPE	COLOUR	COMMENT
1	1018.1	-	50	50	CONTINUOUS	PRIMROSE YELLOW	DOUBLE YELLOW LINES
2	1057	1215	-	750	SYMBOL	WHITE	CYCLE SYMBOL (SMALL)
3	1062	-	-	750	SYMBOL	WHITE	ROAD HUMPS SYMBOL
4	1059	1000	-	175	SYMBOL	WHITE	STRAIGHT ARROW

REMOVE LANTERN ON SIGN BRACKET (ELECTRICAL DISCONNECTION REQUIRED), RAISE EXISTING "NO-ENTRY" SIGN AND INSTALL "EXCEPT CYCLES" SUPPLEMENTARY PLATE BENEATH "NO ENTRY" SIGN. LIAISON WITH LB SOUTHWARK STREET LIGHTING REQUIRED.

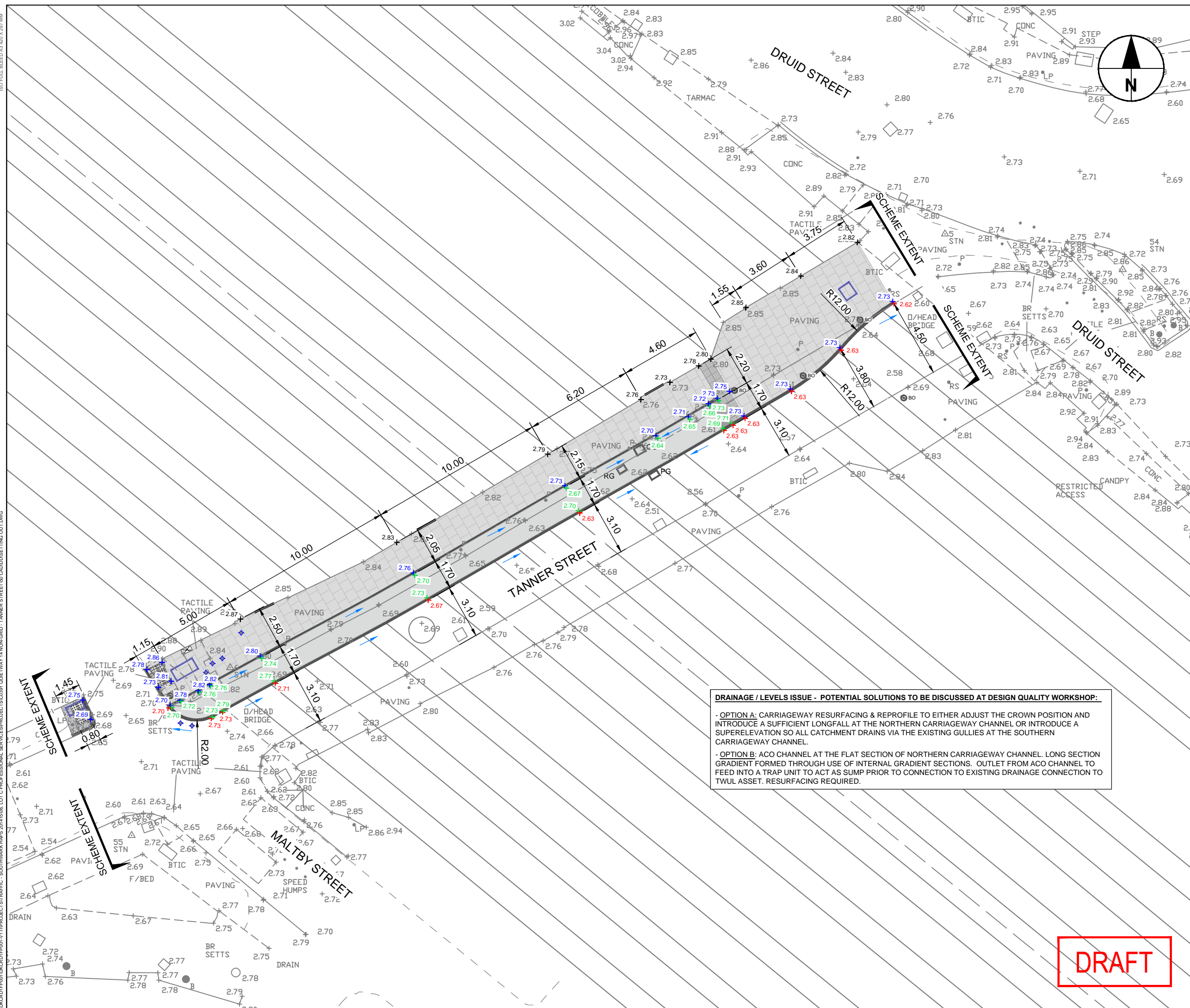
**Except cycles**

REMOVE LANTERN ON SIGN BRACKET (ELECTRICAL DISCONNECTION REQUIRED), RAISE EXISTING "NO-ENTRY" SIGN AND INSTALL "EXCEPT CYCLES" SUPPLEMENTARY PLATE BENEATH "NO ENTRY" SIGN. LIAISON WITH LB SOUTHWARK STREET LIGHTING REQUIRED.

**Except cycles**

**DRAFT**





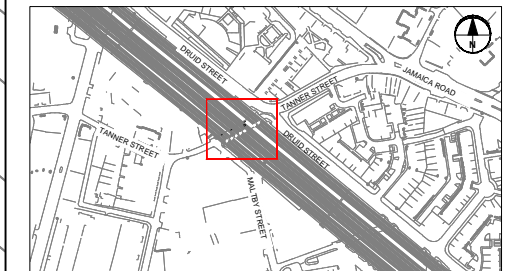
**LEGEND**

- +0.000 Existing levels
- Chainage / Reference points
- + 0.00 Levels at the back of footway or public highway boundary - to be retained
- + 0.00 Proposed top of kerb / footway levels
- + 0.00 Proposed cycle track levels
- + 0.00 Proposed channel and carriageway levels
- 0.00 Setting out dimensions
- 0.00 Chainage offset / reference
- Carriageway / cycle track longfall

**NOTES**

1. This drawing is to be read in conjunction with all CONWAY AECOM drawings for job reference C0391 as listed on the document issue sheet
2. All dimension are in metres unless otherwise stated
3. Design based on topographical surveys undertaken by David J Webb Surveys Ltd in 2015.
4. Do not scale from the drawing.
5. Contractor and LBS to liaise with Network Rail.

**LOCATION PLAN**



Not To Scale

**DRAINAGE / LEVELS ISSUE - POTENTIAL SOLUTIONS TO BE DISCUSSED AT DESIGN QUALITY WORKSHOP:**

- OPTION A: CARRIAGEWAY RESURFACING & REPROFILE TO EITHER ADJUST THE CROWN POSITION AND INTRODUCE A SUFFICIENT LONGFALL AT THE NORTHERN CARRIAGEWAY CHANNEL OR INTRODUCE A SUPERELEVATION SO ALL CATCHMENT DRAINS VIA THE EXISTING GULLIES AT THE SOUTHERN CARRIAGEWAY CHANNEL.
- OPTION B: ACO CHANNEL AT THE FLAT SECTION OF NORTHERN CARRIAGEWAY CHANNEL. LONG SECTION GRADIENT FORMED THROUGH USE OF INTERNAL GRADIENT SECTIONS. OUTLET FROM ACO CHANNEL TO FEED INTO A TRAP UNIT TO ACT AS SUMP PRIOR TO CONNECTION TO EXISTING DRAINAGE CONNECTION TO TWUL ASSET. RESURFACING REQUIRED.

DRAFT

REV	DATE	REVISION DESCRIPTION / DETAILS	DRN BY	CHKD BY	APRVD BY

  
 Shaping Southwark's Highways  
 160 TOOLEY STREET LONDON SE1P 5LX

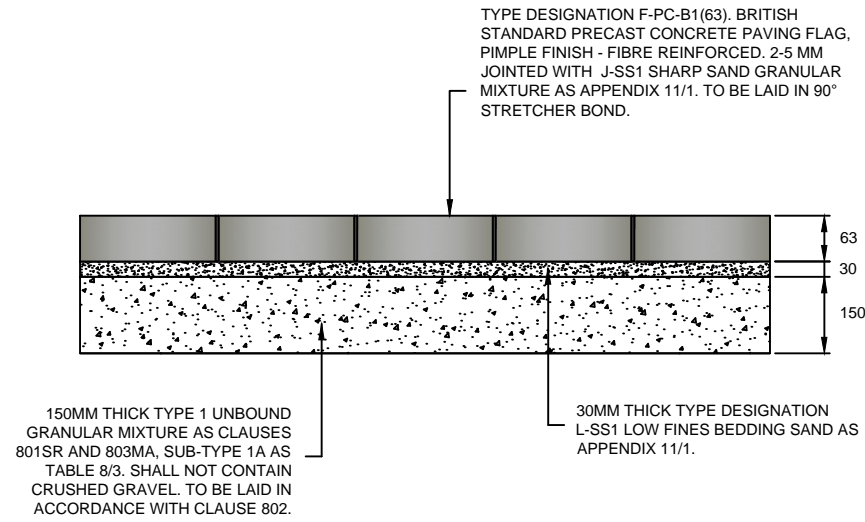
PROJECT: **QUIETWAY 14 NON-GRID  
TANNER STREET DETAILED DESIGN**

TITLE: **SETTING OUT  
SHEET 1 OF 1**

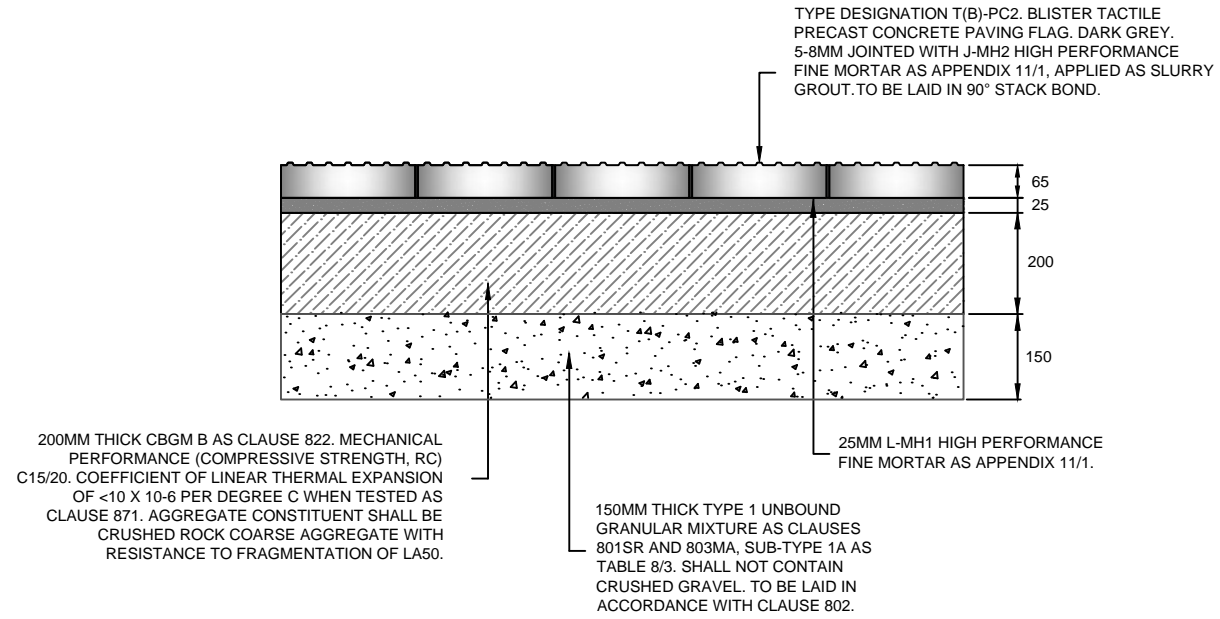
CONTRACT NO:	60493383-C0391	DRAWN	IF
SCALE:	1 : 200 @ A3	DESIGNED	IR
DRAWING NO:	60493383-C0391-SO-01	CHECKED	JE
DATE DRAWN:	AUGUST 2017	APPROVED	AGB
DATE ISSUED:	17 AUGUST 2017	REV:	0

I:\MCD\PROJECTS\QUIETWAY 14\NON-GRID-TANNER STREET\DWG\CADD\SETTING OUT.DWG  
 I:\MCD\PROJECTS\QUIETWAY 14\NON-GRID-TANNER STREET\DWG\CADD\SETTING OUT.DWG  
 I:\MCD\PROJECTS\QUIETWAY 14\NON-GRID-TANNER STREET\DWG\CADD\SETTING OUT.DWG

**UNBOUND FOOTWAY CONSTRUCTION  
DETAIL A**



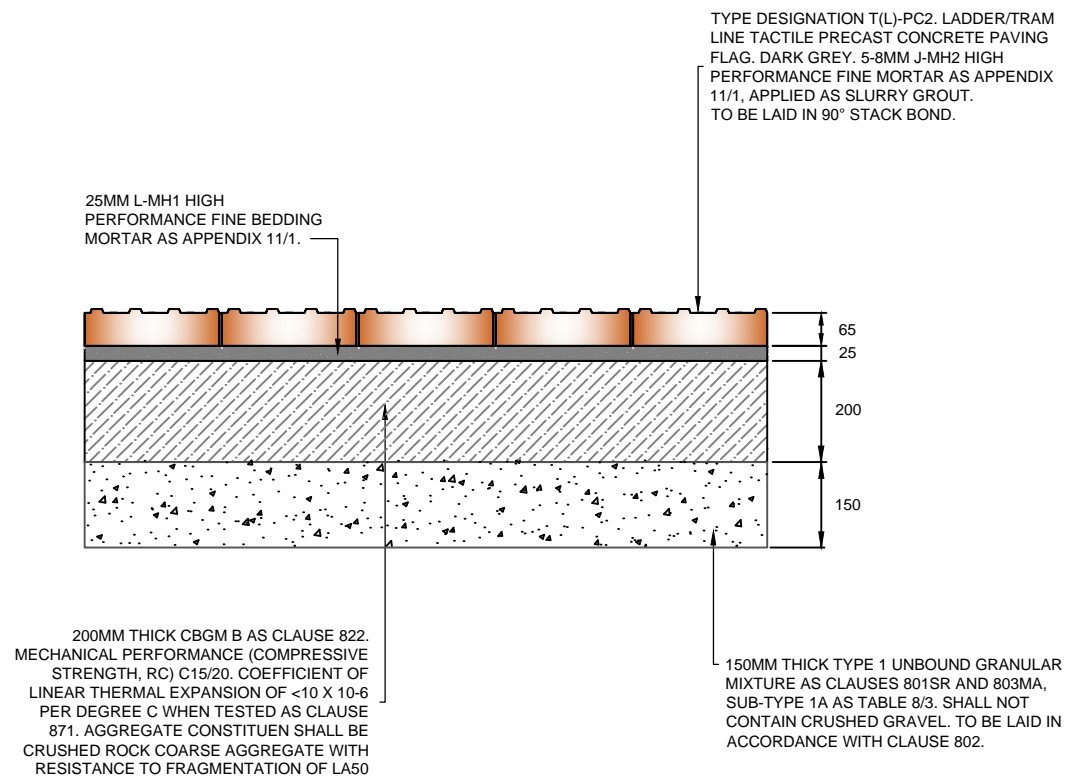
**TACTILE SURFACE  
(BLISTER - UNCONTROLLED CROSSING)  
DETAIL B**



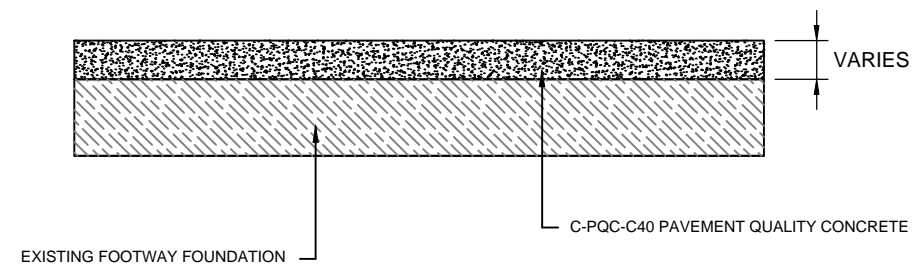
**NOTES**

1. This drawing is to be read in conjunction with all CONWAY AECOM drawings for job reference C0391 as listed on the document issue sheet
2. All dimensions are in millimetres unless otherwise stated
3. Reference is to be made to the LB Southwark Streetscape Design Manual (SSDM) Standard Drawings and relevant contract clauses.
4. Thickness of granular subbase can be reduced locally where stats are found.
5. Do not scale from this drawing. Use only written dimensions.

**TACTILE SURFACE  
(LADDER/TRAMLINE)  
DETAIL C**



**CONCRETE FOOTWAY REINSTATEMENT  
DETAIL D**



**DRAFT**

REV	DATE	REVISION DESCRIPTION / DETAILS	DRN BY	CHKD BY	APRVD BY

Shaping Southwark's Highways
   
 160 TOOLEY STREET LONDON SE1P 5LX

PROJECT:  
**QUIETWAY 14 NON-GRID  
TANNER STREET DETAILED DESIGN**

TITLE:  
**STANDARD DETAILS  
SHEET 1 OF 2**

CONTRACT NO:	60493383-C0391	DRAWN	IF
SCALE:	1 : 200 @ A3	DESIGNED	IR
DRAWING NO:	60493383-C0391-SD-01	CHECKED	JE
DATE DRAWN:	AUGUST 2017	APPROVED	AGB
DATE ISSUED:	17 AUGUST 2017	REV:	0

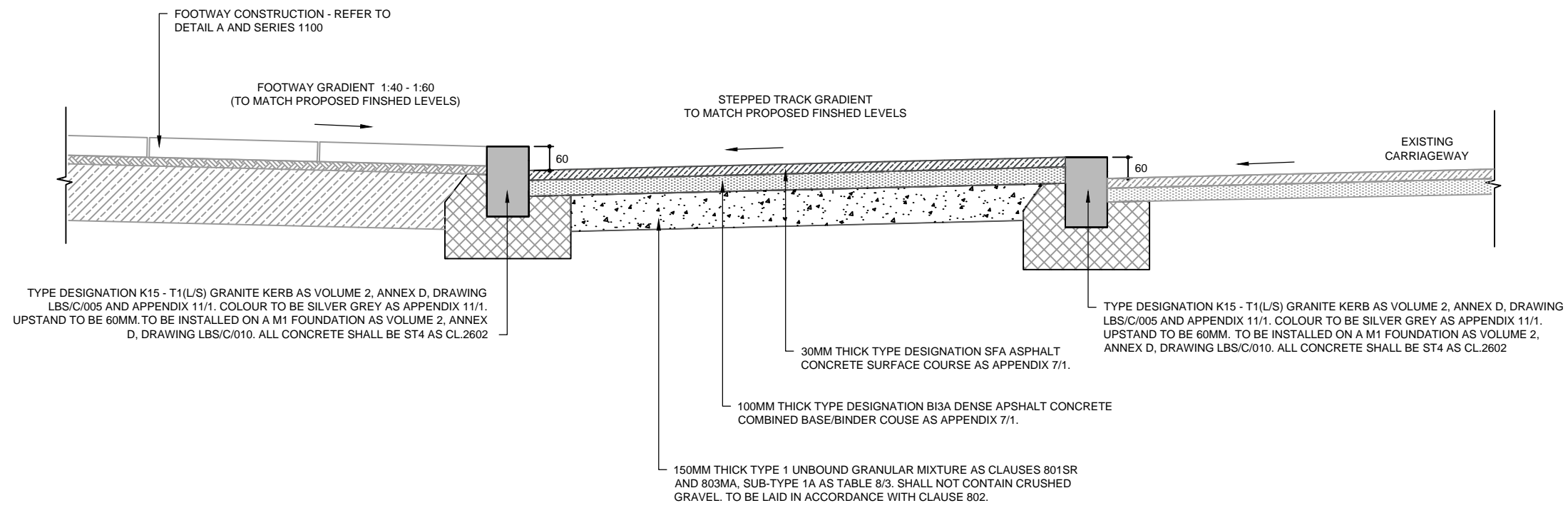
I:\UKCDD\PROJECTS\TRAFFIC - SOUTHWARK\HPS 2014\16\06 LOT C PROFESSIONAL SERVICES\PROJECTS\0391 QUIETWAY 14 NON-GRID - TANNER STREET\09 CAD\DD\STANDARD DETAIL SDWG



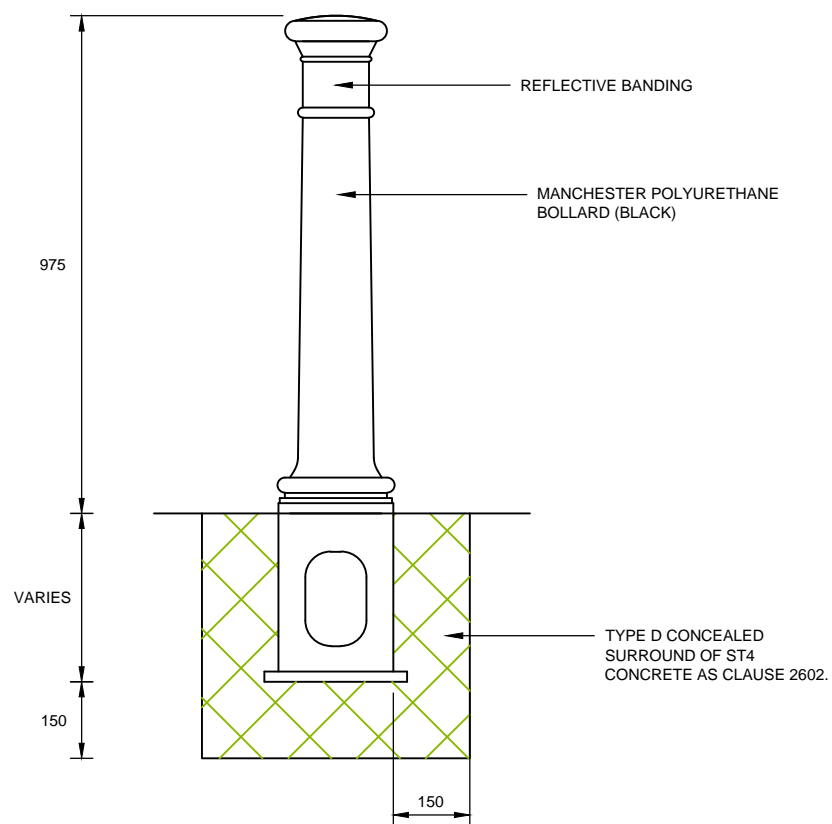
NOTES

- 1. This drawing is to be read in conjunction with all CONWAY AECOM drawings for job reference C0391 as listed on the document issue sheet
- 2. All dimensions are in millimetres unless otherwise stated
- 3. Reference is to be made to the LB Southwark Streetscape Design Manual (SSDM) Standard Drawings and relevant contract clauses.
- 4. Thickness of granular subbase can be reduced locally where stats are found.
- 5. Tack coats and/or bond coats should be provided between all asphalt courses and to interfaces with edge restraints and iron work.
- 6. Do not scale from this drawing. Use only written dimensions.

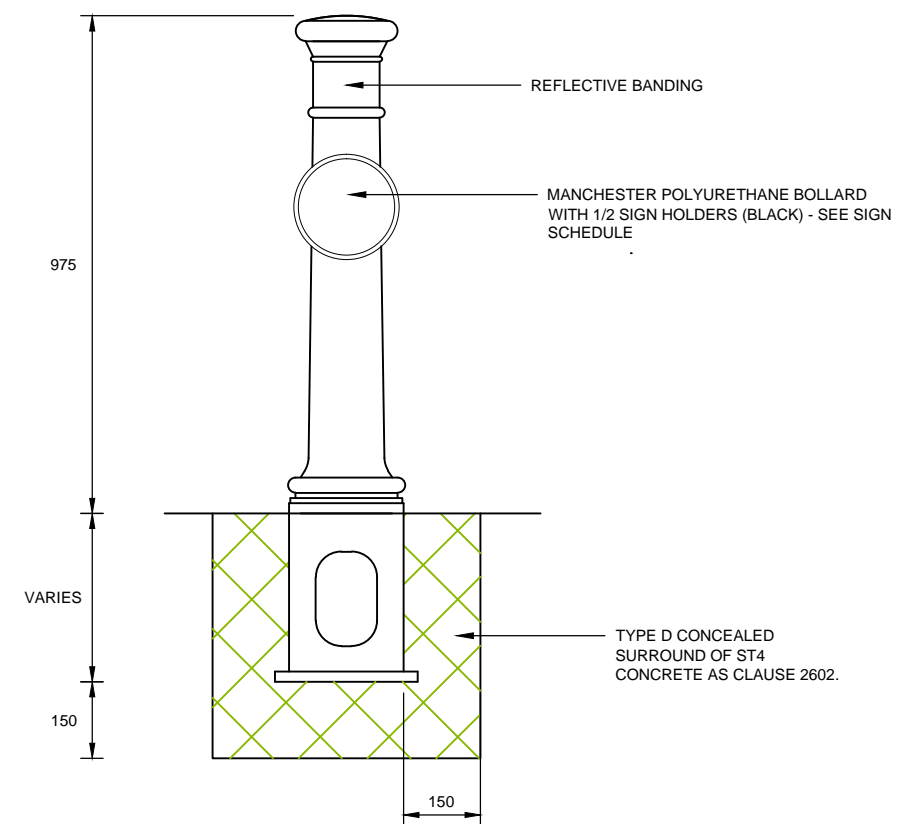
STEPPED CYCLE TRACK TYPICAL SECTION  
DETAIL E



MANCHESTER BOLLARD  
DETAIL F



MANCHESTER BOLLARD WITH SIGN HOLDER  
DETAIL G



DRAFT


REV	DATE	REVISION DESCRIPTION / DETAILS	DRN BY	CHKD BY	APRVD BY
-----	------	--------------------------------	--------	---------	----------



PROJECT:  
QUIETWAY 14 NON-GRID  
TANNER STREET DETAILED DESIGN

TITLE:  
STANDARD DETAILS  
SHEET 2 OF 2

CONTRACT NO:	60493383-C0391	DRAWN	IF
SCALE:	1 : 200 @ A3	DESIGNED	IR
PURPOSE:	DISCUSSION	CHECKED	JE
DRAWING NO:	60493383-C0391-SD-02	APPROVED	AGB
DATE DRAWN:	AUGUST 2017	REV:	0
DATE ISSUED:	17 AUGUST 2017		

ISO FULL BLEED A3 420 X 297 MM  
U:\KCD\PROJECTS\TRAFFIC - SOUTHWARK\HPS 2014\16\06 LOT C PROFESSIONAL SERVICES\PROJECTS\C0391 QUIETWAY 14 NON-GRID - TANNER STREET\CD CAD\DD\STANDARD DETAILS\DWG

# TRAFFIC SIGN SCHEDULE

## SIGN DETAILS

**BO1**



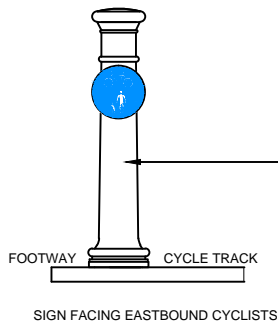
Sign Reference	956
Height	150mm
Width	150mm
Area	0.02 sq.m
Material	Class RA2 (12899-1:2007)
Mount Height	-

Sign Reference	957
Height	150mm
Width	150mm
Area	0.02 sq.m
Material	Class RA2 (12899-1:2007)
Mount Height	-

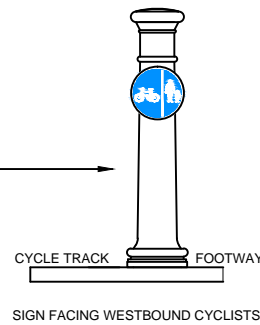
## MOUNTING AND FOUNDATION DETAILS

METHOD OF MOUNTING	
MAXIMUM MOUNTING HEIGHT	1200MM
ILLUMINATION	NO
	NEW
BOLLARD	
NO. OF SIGNS	2
GAP BETWEEN SIGNS	-

## LOCATION DETAILS



NEW MANCHESTER  
POLYURETHANE  
BOLLARD WITH SQUARE  
ROOT AND X2 CIRCULAR  
SIGN HOLDERS (Ø150MM)



**DRAFT**

### NOTES:

- This drawing is to be read in conjunction with all CONWAY AECOM drawings for job reference C0391 as listed on the document issue sheet.
- All dimensions are in millimetres unless otherwise stated
- All road markings and signs are to be in accordance with the Traffic Signs Regulations and General Directions (TSRGD) 2016



PROJECT: QUIETWAY 14 NON-GRID  
TANNER STREET DETAILED DESIGN

TITLE: TRAFFIC SIGNS SCHEDULE  
SHEET 1 OF 4

CONTRACT NO:	60493383-C0391	DRAWN:	JE
SCALE:	N.T.S.	DESIGNED:	JE
PURPOSE:	DISCUSSION	CHECKED:	JE
DRAWING NO:	60493383-C0391-TSS-01	APPROVED:	AGB
DATE DRAWN:	AUGUST 2017	REV:	0
DATE ISSUED:	17 AUGUST 2017		



# TRAFFIC SIGN SCHEDULE

## SIGN DETAILS

**B02**

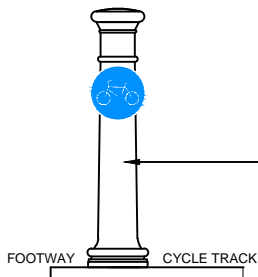


Sign Reference	955
Height	150mm
Width	150mm
Area	0.02 sq.m
Material	Class RA2 (12899-1:2007)
Mount Height	-

## MOUNTING AND FOUNDATION DETAILS

METHOD OF MOUNTING		
MAXIMUM MOUNTING HEIGHT		1200MM
ILLUMINATION	NO	
	NEW	
BOLLARD	NO. OF SIGNS	1
	GAP BETWEEN SIGNS	-

## LOCATION DETAILS



NEW MANCHESTER POLYURETHANE BOLLARD WITH SQUARE ROOT AND X1 CIRCULAR SIGN HOLDER (Ø150MM)

SIGN FACING EASTBOUND CYCLISTS

**DRAFT**

### NOTES:

- This drawing is to be read in conjunction with all CONWAY AECOM drawings for job reference C0391 as listed on the document issue sheet.
- All dimensions are in millimetres unless otherwise stated
- All road markings and signs are to be in accordance with the Traffic Signs Regulations and General Directions (TSRGD) 2016

LEGEND / NOTES



PROJECT: QUIETWAY 14 NON-GRID  
TANNER STREET DETAILED DESIGN

TITLE: TRAFFIC SIGNS SCHEDULE  
SHEET 2 OF 4

CONTRACT NO:	60493383-C0391	DRAWN	IF
SCALE:	N.T.S.	DESIGNED	JE
PURPOSE:	DISCUSSION	CHECKED	JE
DRAWING NO:	60493383-C0391-TSS-02	APPROVED	AGB
DATE DRAWN:	AUGUST 2017	REV:	0
DATE ISSUED:	17 AUGUST 2017		

# TRAFFIC SIGN SCHEDULE

## SIGN DETAILS

RS-1

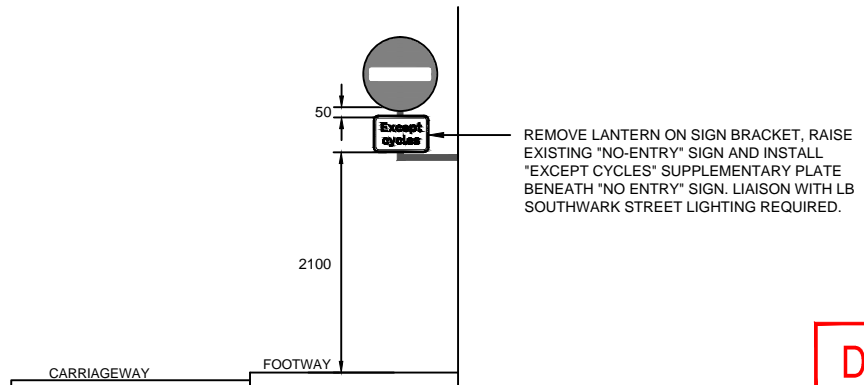


Scheme Ref. RS-13	
Sign Ref. 954-4	x-height 50.0
Letter colour BLACK	SIGN FACE
Background WHITE	Width 435mm
Border BLACK	Height 290mm
Material Class RA2 (12899-1:2007)	Area 0.12sq.m

## MOUNTING AND FOUNDATION DETAILS

SIGN TO BE INSTALLED ON EXISTING SIGN BRACKET

## LOCATION DETAILS



**DRAFT**

### NOTES:

- This drawing is to be read in conjunction with all CONWAY AECOM drawings for job reference C0391 as listed on the document issue sheet.
- All dimensions are in millimetres unless otherwise stated
- All road markings and signs are to be in accordance with the Traffic Signs Regulations and General Directions (TSRGD) 2016

LEGEND / NOTES



PROJECT: QUIETWAY 14 NON-GRID  
TANNER STREET DETAILED DESIGN

TITLE: TRAFFIC SIGN SCHEDULE  
SHEET 3 OF 4

CONTRACT NO:	60493383-C0391	DRAWN	JE
SCALE:	N.T.S.	DESIGNED	JE
PURPOSE:	DISCUSSION	CHECKED	JE
DRAWING NO:	60493383-C0391-TSS-03	APPROVED	AGB
DATE DRAWN:	AUGUST 2017	REV:	0
DATE ISSUED:	17 AUGUST 2017		



# TRAFFIC SIGN SCHEDULE

## SIGN DETAILS

RS-2



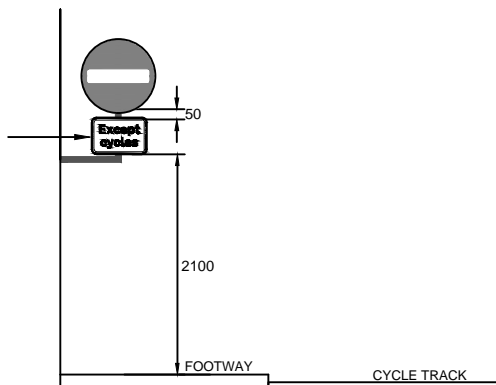
Scheme Ref. RS-13	
Sign Ref. 954-4	x-height 50.0
Letter colour BLACK	SIGN FACE
Background WHITE	Width 435mm
Border BLACK	Height 290mm
Material Class RA2 (12899-1:2007)	Area 0.12sq.m

## MOUNTING AND FOUNDATION DETAILS

SIGN TO BE INSTALLED ON EXISTING SIGN BRACKET

## LOCATION DETAILS

REMOVE LANTERN ON SIGN BRACKET, RAISE EXISTING "NO-ENTRY" SIGN AND INSTALL "EXCEPT CYCLES" SUPPLEMENTARY PLATE BENEATH "NO ENTRY" SIGN. LIAISON WITH LB SOUTHWARK STREET LIGHTING REQUIRED.



**DRAFT**

### NOTES:

- This drawing is to be read in conjunction with all CONWAY AECOM drawings for job reference C0391 as listed on the document issue sheet.
- All dimensions are in millimetres unless otherwise stated
- All road markings and signs are to be in accordance with the Traffic Signs Regulations and General Directions (TSRGD) 2016

LEGEND / NOTES



PROJECT: QUIETWAY 14 NON-GRID TANNER STREET DETAILED DESIGN

TITLE: TRAFFIC SIGN SCHEDULE SHEET 4 OF 4

CONTRACT NO:	60493383-C0391	DRAWN:	JE
SCALE:	N.T.S.	DESIGNED:	JE
PURPOSE:	DISCUSSION	CHECKED:	AGB
DRAWING NO:	60493383-C0391-TSS-04	APPROVED:	AGB
DATE DRAWN:	AUGUST 2017	REV:	0
DATE ISSUED:	17 AUGUST 2017		