

Rye Hill Park New Build

May 2021 | Issue 6

Residents' Newsletter

Welcome to your latest newsletter

ENGIE is working in partnership with Southwark Council to build new council homes at Rye Hill Park. The project is due to complete in summer 2022.

Our latest progress...

Since our previous newsletter we have finished installing the piling mat to the upper section of the site.

We have started the second phase of our vehicular crossover for the access and egress gate at the upper end of the site. These works are being carried out on the footpath. We are also continuing to install drainage systems on the lower section of the site.

Over the coming weeks we will add a second layer of piling mat for the blocks. Drainage works outside the hoarding and adjacent to 2-32 Rye Hill Park will take place depending on Thames Water and their extended attendance schedule due to COVID-19.



Breaking out of concrete slab and lower section of site piling mat

Contact Us...

Our usual working hours are **Monday to Friday, 8am to 5pm.**

If you have a query about the works or would like to report an emergency during our working hours please contact the ENGIE Project Manager, **Mark Roberts** on **07971 792258.**

Alternatively, our main office number is **0207 523 5201.**

If you need to report an emergency out of hours, or at the weekend, please call us on **0333 121 0067.**



Project Manager, Mark Roberts
07971 792 258

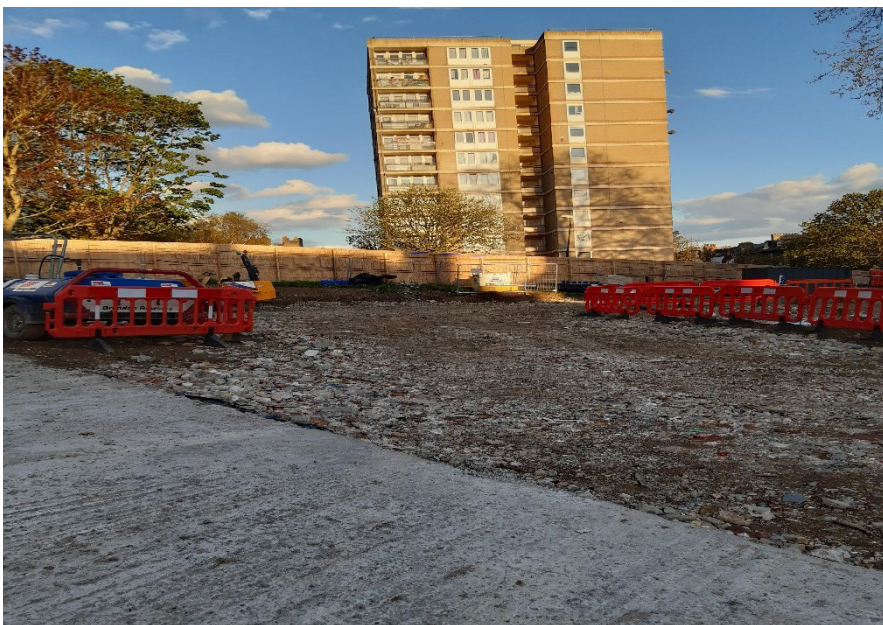


Additional lighting to hoarding

We will write to the residents of 2-31 Rye Hill Park separately and closer to the event, providing a full explanation of the works.

We will be erecting a crane on site and starting piling works in late May/early June. We will issue residents a letter shortly regarding this.

Please do not park on the new yellow lines as it is affecting our deliveries. We understand this is frustrating however when deliveries arrive we struggle to get the vehicles on site.



Block A Piling Mat First Layer

COVID-19 measures

As more businesses and venues start to re-open, we would like to remind you that we are still following current government guidelines regarding protective measures and social distancing to prevent to spread of COVID-19. These measures ensure we continue to deliver our works safely.

COVID-19 remains a very real danger, if you are experiencing any symptoms please isolate at home and book a free test - **Do your part to keep your community safe and COVID-19 free.**



Considerate Constructors

ENGIE is also a **multi-award winning considerate constructor** and we pride ourselves on being an Associate Member of the Considerate Constructors Scheme (CCS) which helps to improve the image of the construction industry.

As part of our ongoing commitment to the objectives of the CCS, **we ensure the highest levels of safety are maintained across our sites.** Please explain to your children how construction sites can be dangerous and should not be played on at any time.

For more information please visit: www.ccscheme.org.uk