

Woodland Road Landscape Design

Objectives

Objectives

Use landscape to help foster a strong sense of community

Promote inclusive design and celebrate diversity

Respond to the needs of all users

Retain privacy for residents

Create a distinct sense of place

Create a rich landscape with planting to provide seasonal variation

Improve biodiversity

Low maintenance design

Value for money

Analysis

Buildings in Space



Modernist landscape, with buildings sitting as objects in an open 'parkland'

Woodland provides acoustic buffer to railway

Site perceived as a front and back

Constraints



Retention of mature trees

Existing building entrances and pedestrian routes

Cutting to railway

New Addition



Third building will have a significant impact on the site, and setting

Landscape more constrained, buildings less articulated as objects in space

Must be more than just the 'leftover' space - a new approach to landscape is required

A Complete Landscape



Consider the full extents of the site

Reduce impact of hard landscaping

Remove perception of front and back

A Programmed Landscape



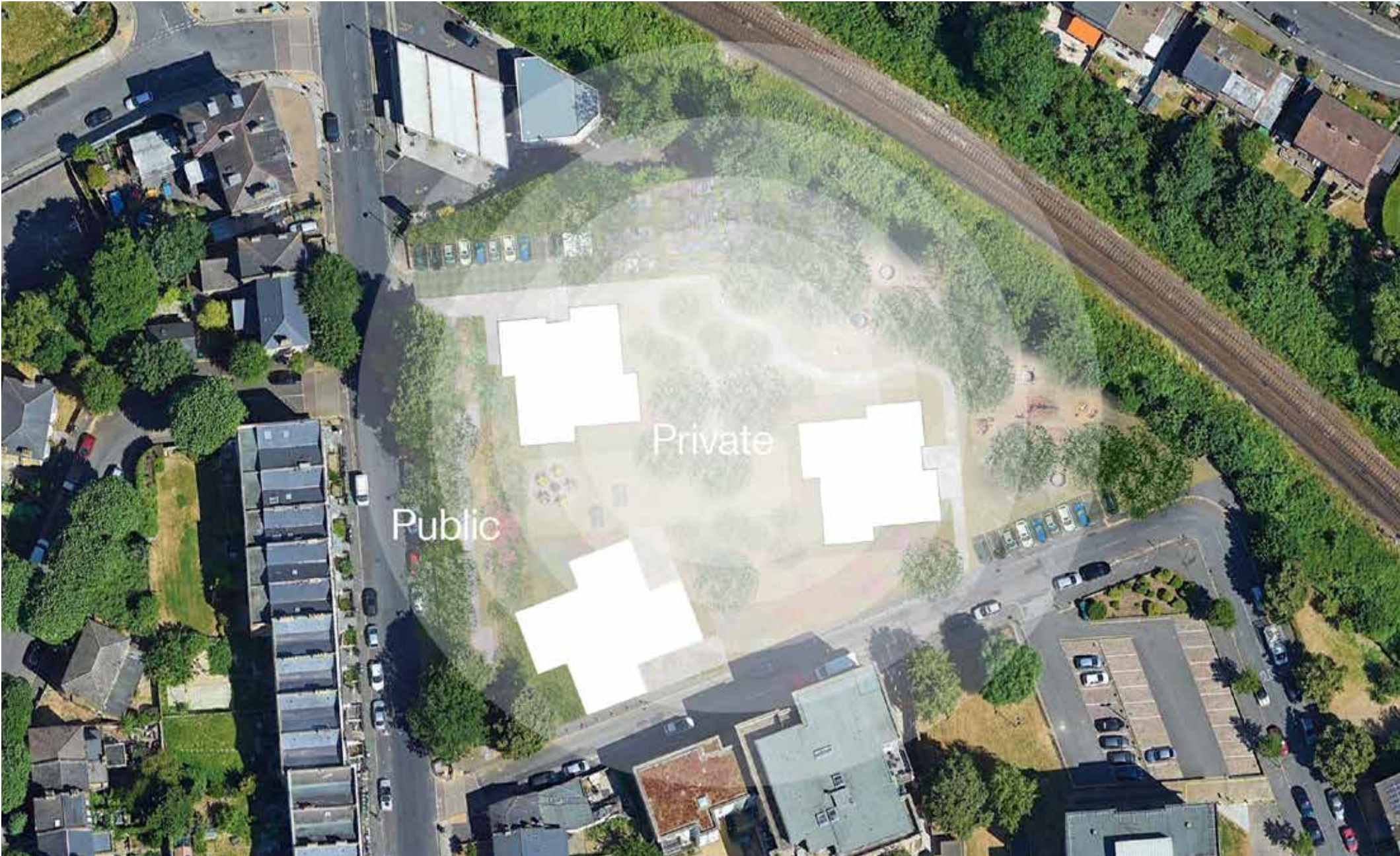
Exploit the character of each area of the site

Provide a range of potential uses

Consider both residents and the wider community

Proposals

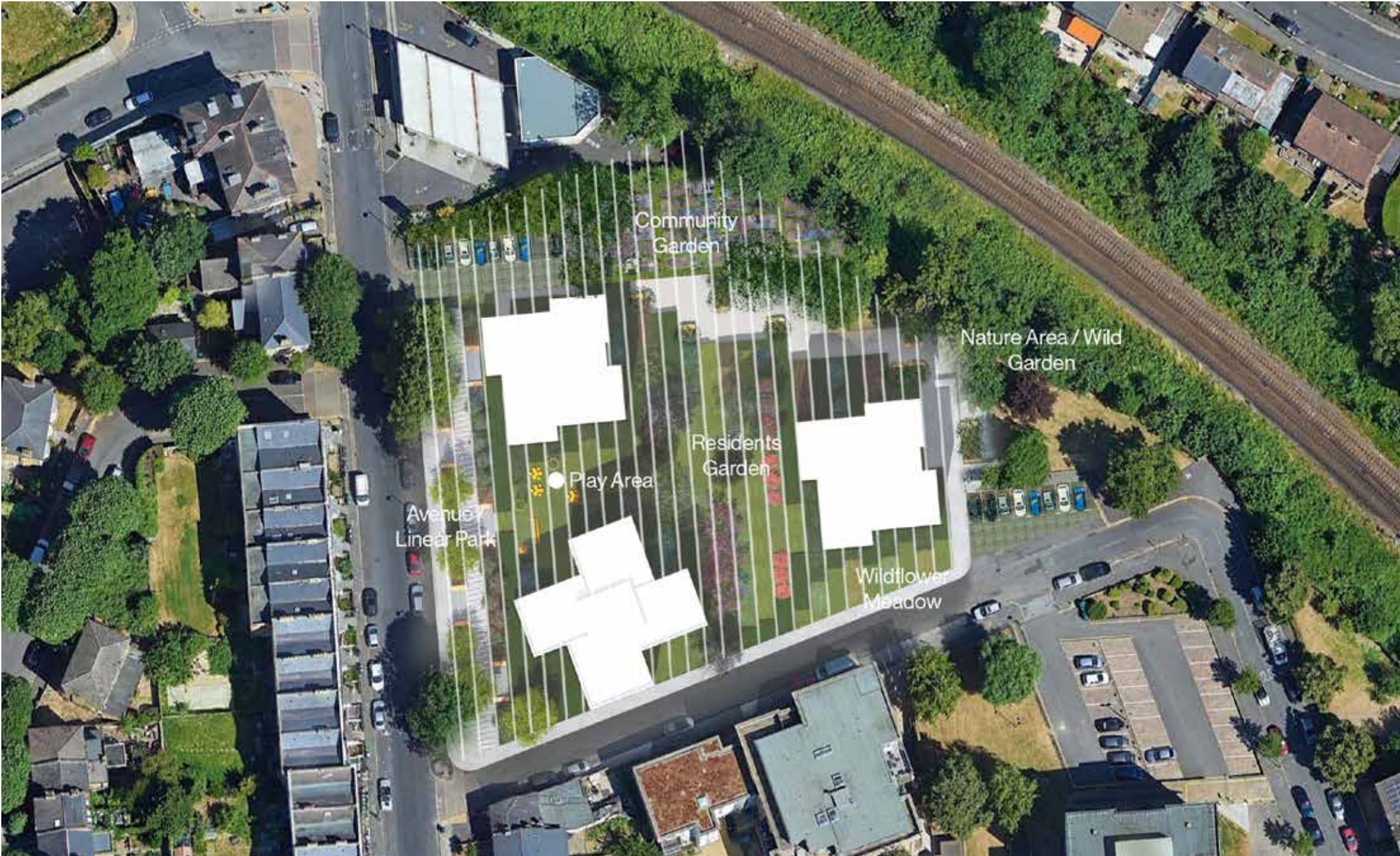
Option 1_a functional response



Option 1_a functional response



Option 2_a structured response



Option 2_a structured response



Linear Park



Low hedging creates boundaries

Herbaceous perennials in planters

Seating in protected niches

Publicly accessible

A community benefit



Linear Park



Low hedging creates boundaries

Herbaceous perennials in planters

Seating in protected niches

Publicly accessible

A community benefit



Linear Park



Examples of low level planting - low maintenance, protecting trees and providing privacy to dwellings

Gypsy Hill / Woodlands Road Corner



Existing and new trees along Gypsy Hill

Low level hedges and planters

Seating integrated into planters

A visual threshold

Privacy to new dwellings



Wildflower Meadow



Wildflower garden along Woodland Road

Improves biodiversity

Threshold to existing dwellings



Wildflower Meadow



Wildflower meadow planting

Resident's Garden



- Garden located between housing
- South facing orientation
- Framed by low level hedging + buildings
- Small trees and seating
- An informal place to relax

Resident's Garden



- Garden located between housing
- South facing orientation
- Framed by low level hedging + buildings
- Small trees and seating
- An informal place to relax

Resident's Garden



- Garden located between housing
- South facing orientation
- Framed by low level hedging + buildings
- Small trees and seating
- An informal place to relax

Resident's Garden



Open spaces for residents with low level planting offering privacy to ground floor apartments

Play Area



Playground overlooked by dwellings

A secure place

Connected to Resident's Garden

Possible entrance from Linear Park

Childrens play area set back from street

Play Area



A range of play equipment, from natural to abstract

Community Garden and Nature Area



- Grow your own
- Community orchard or allotments
- Low maintenance 'wild' garden
- Improved biodiversity

A Place for All

