

Landscape & public realm opportunities

Site on Lomond Grove and part of the Elmington Estate



Landscape & public realm opportunities

Landscape sketch plan - Overall

Linear park

New play area to replace the existing play area

Pocket park

Site area



Landscape & public realm opportunities

Landscape design of the linear park - Area 01



Along Lomond Grove with defensible planting to the existing block. Some additional tree planting here, but there are a number of large trees that overshadow the street. There is a similar linear space in Elephant & Castle along A201 (David Copperfield Gardens)



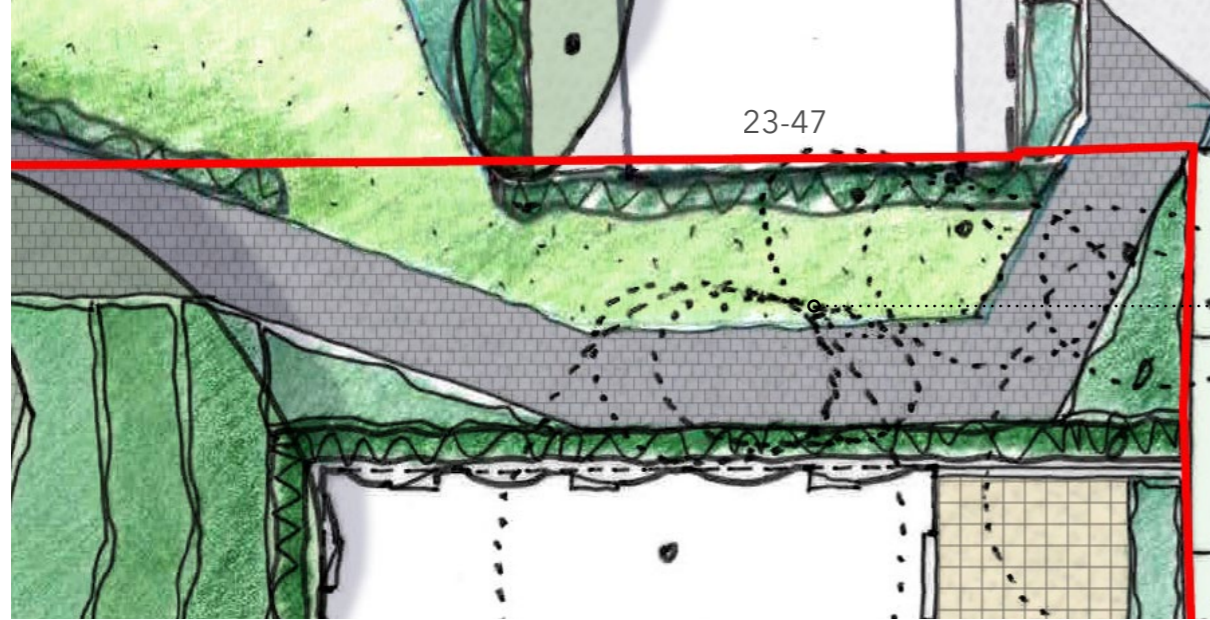
Green space



Green space

Landscape & public realm opportunities

Landscape design of the pocket park - Area 02



Located between 23-47 Caspian Street and the proposed building, this is a green 'link' space providing pedestrian access from Lomond Grove to Caspian Street. Planting is proposed to the flank wall of the existing block and feature planting to the side of the proposed building. The space is to have lawn, hedges and ornamental planting.



Low level planting to provide a landscaped buffer to the buildings.



Pathway example



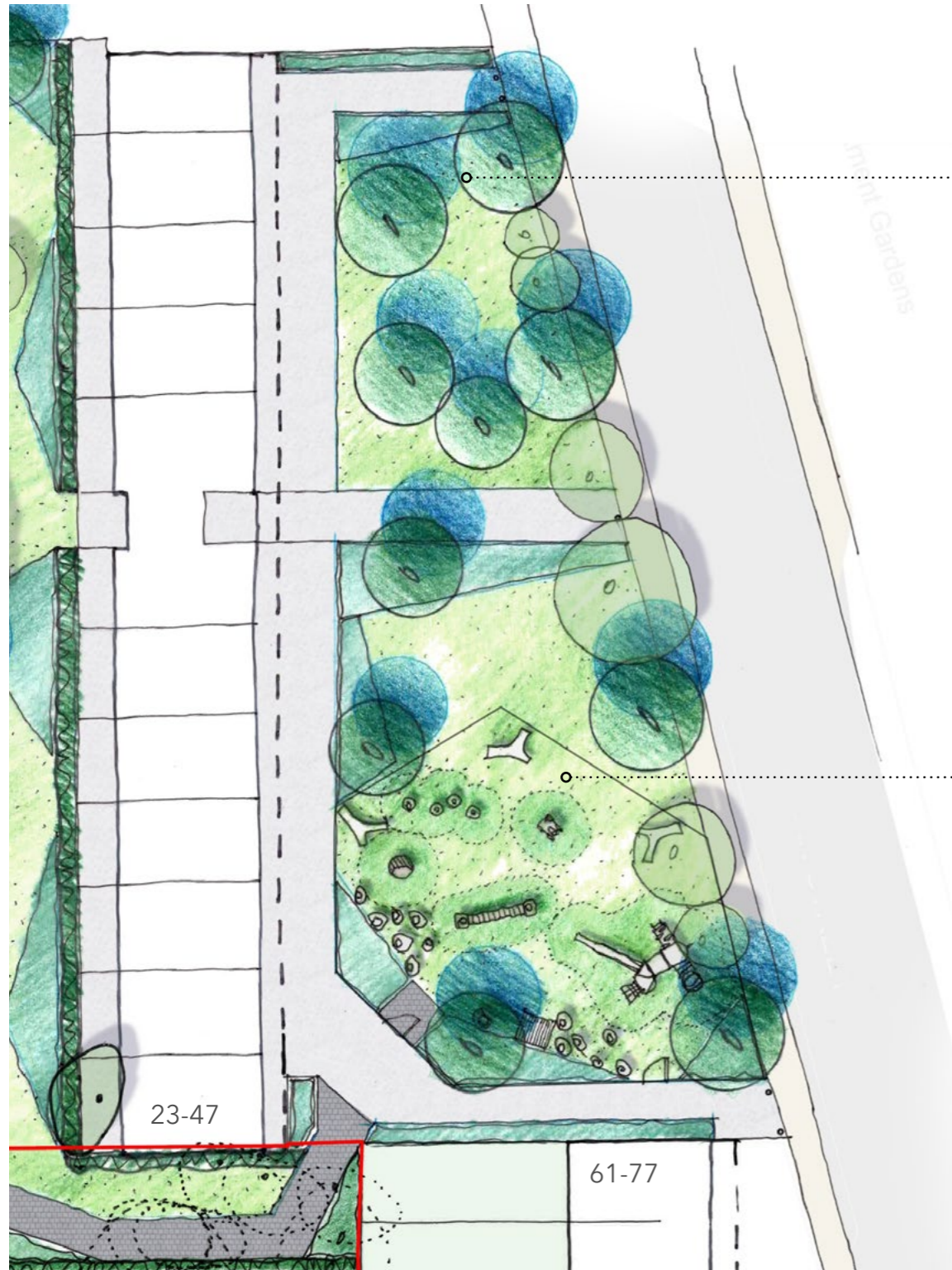
Pocket park example in Stockwell



Example for materiality & low planting

Landscape & public realm opportunities

Landscape design of the new play area - Area 03



Incorporation of ecological enhancements across the site, including native planting, wildflower meadow, bird & bat boxes and bug hotels.

The existing play space is enlarged and has a range of equipment including natural play elements and seating, based on the number of children for the proposed block.

These are some ideas for potential play equipment that could be installed in this area, but we want your views on how this play space should be used and suggestions for play equipment.



Bug hotel and bird boxes to existing trees



Native wildflowers for Lepidoptera species (butterflies)



Play area

Landscape & public realm opportunities

Landscape design of the area within the site - Area 04



The existing footpath is widened to give more space to the base of existing trees.

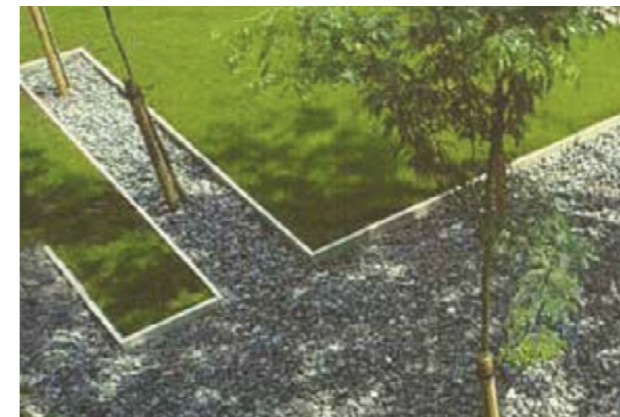
Possible replacement of Thorn tree with alternative street tree species (existing tree is shown as retained)



Footpath widened around existing London Plane



Robust & interesting planting around the building



Communal garden

