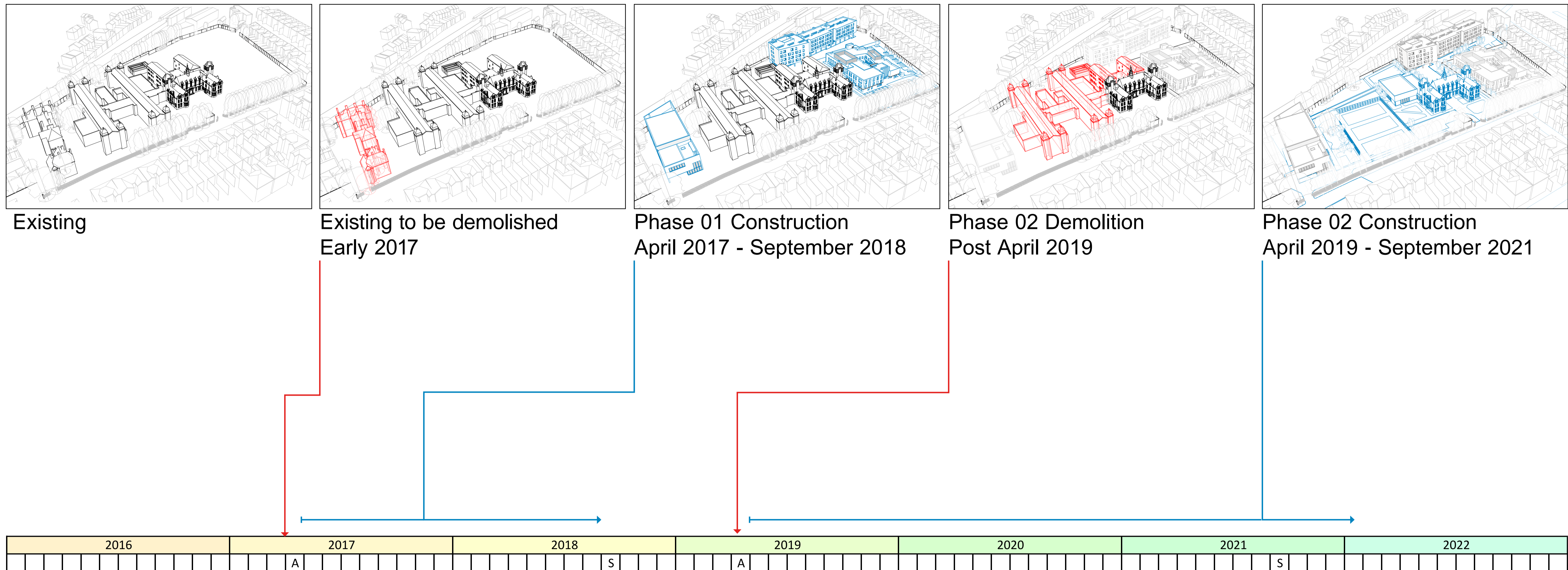


# DULWICH HOSPITAL SITE REDEVELOPMENT

The Charter School East Dulwich / Dulwich Health Centre

## PROGRAMME AND PHASING

Indicative programme and phasing diagrams

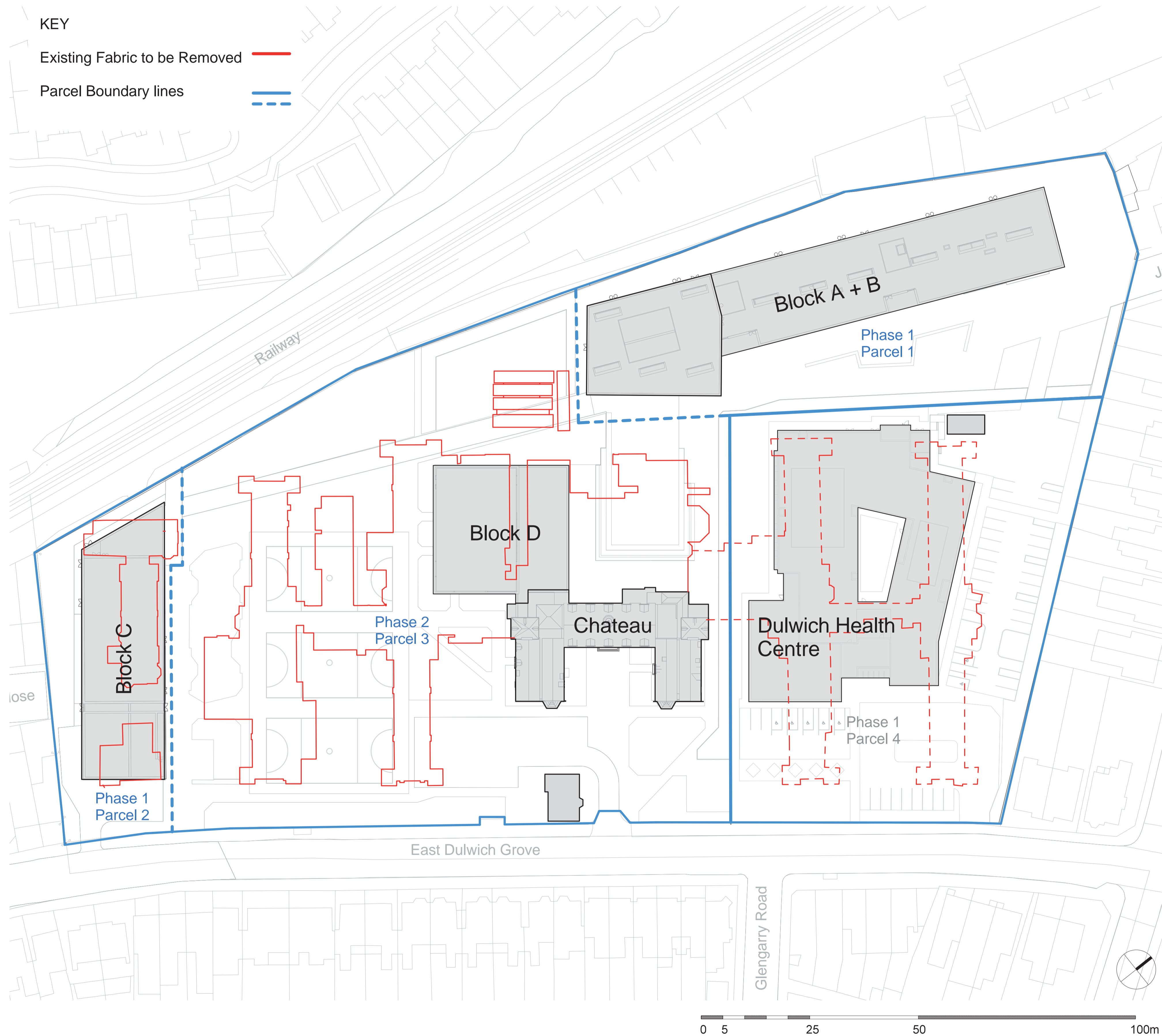


- KEY**
- Existing
  - Demolition works
  - Construction Works
  - Works completed/Occupied



# DULWICH HOSPITAL SITE REDEVELOPMENT

The Charter School East Dulwich



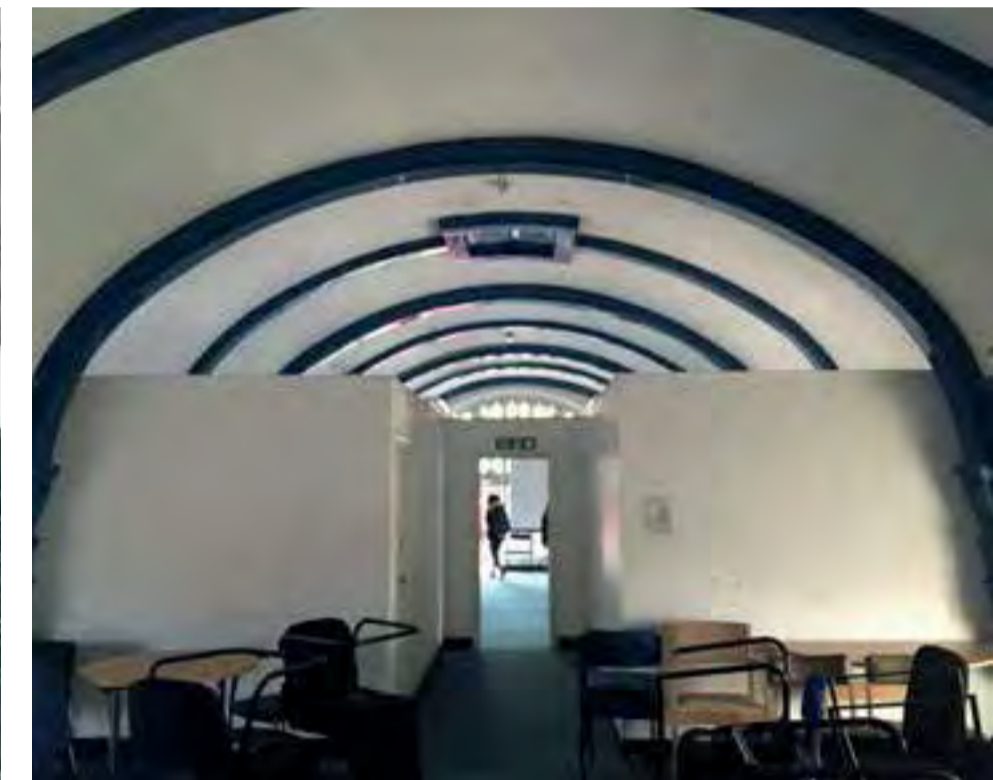
View to the main entrance of St. Saviour's Union Infirmary in East Dulwich Grove



Current view to the main entrance to Dulwich Community Hospital



Original chapel with 28ft high barrel vaulted ceiling and ornamental wooden principals



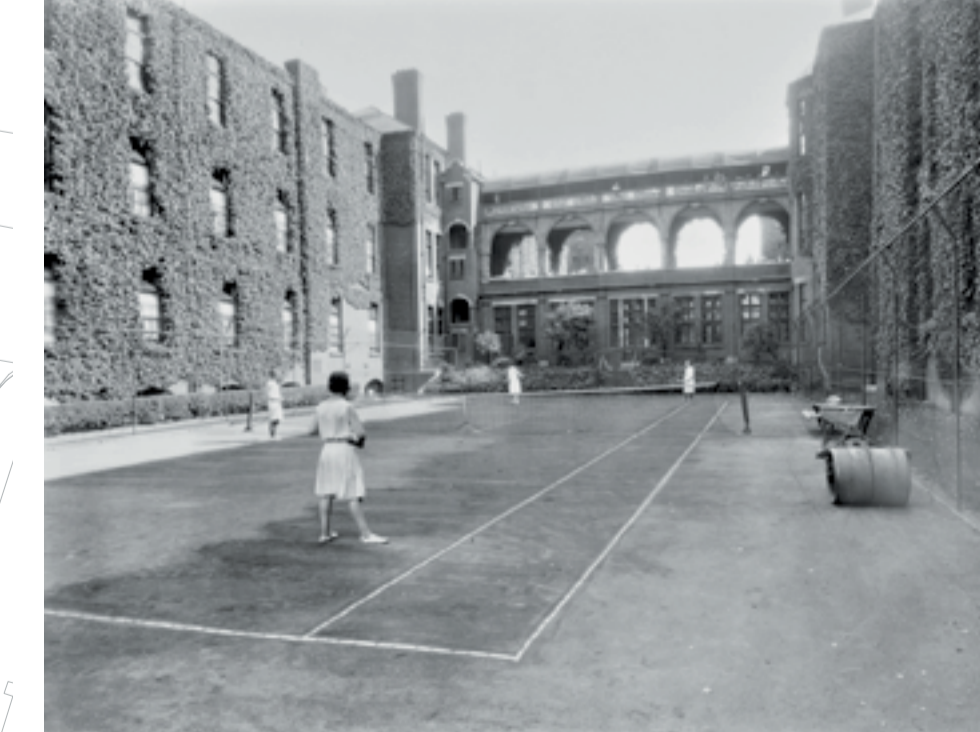
A lightweight mezzanine level office space is currently installed



One of twenty-four original large wards to treat 732 people



The 2 of 4 remaining ward buildings are in a poor state of repair



Grounds between wards intended for recreational grass sports



Contemporary use of grounds: parking and plant



