

223 Southwark Park Road
Former Thorowgoods furniture store

Brief to procure operator for town centre anchor site

**MADE IN
BERMONDSEY**



First floor 2,712 sq ft

Ground floor 3,311 sq ft

Total 6,023 sq ft

C. THOROWGOOD LTD

C. THOROWGOOD LTD

SALE closing down sale

SALE closing down sale

we stock:
ROMAN BLINDS
ROLLER BLINDS
VERTICAL BLINDS
VENTILATOR BLINDS

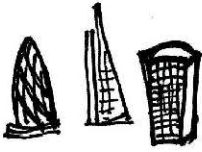
Thoroughgood

Thoroughgood

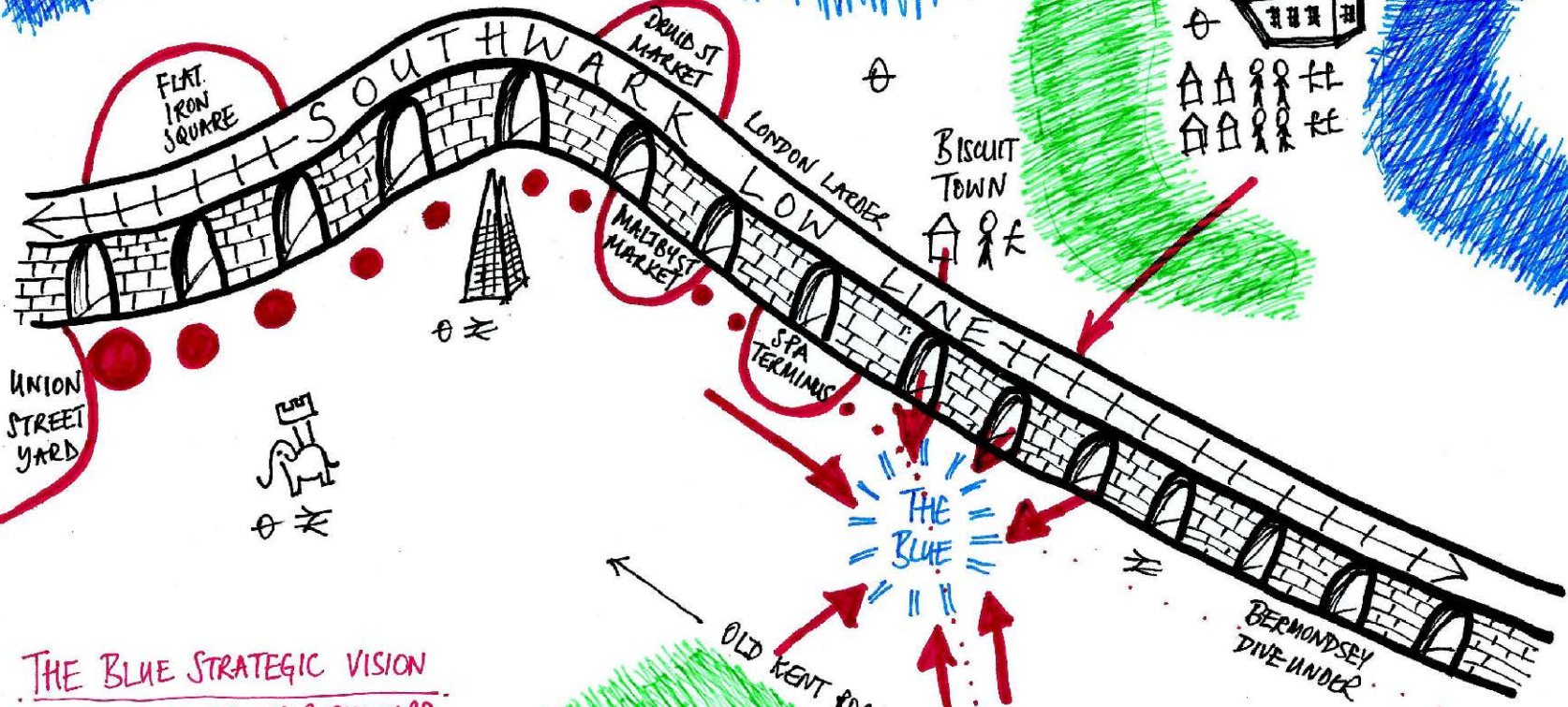
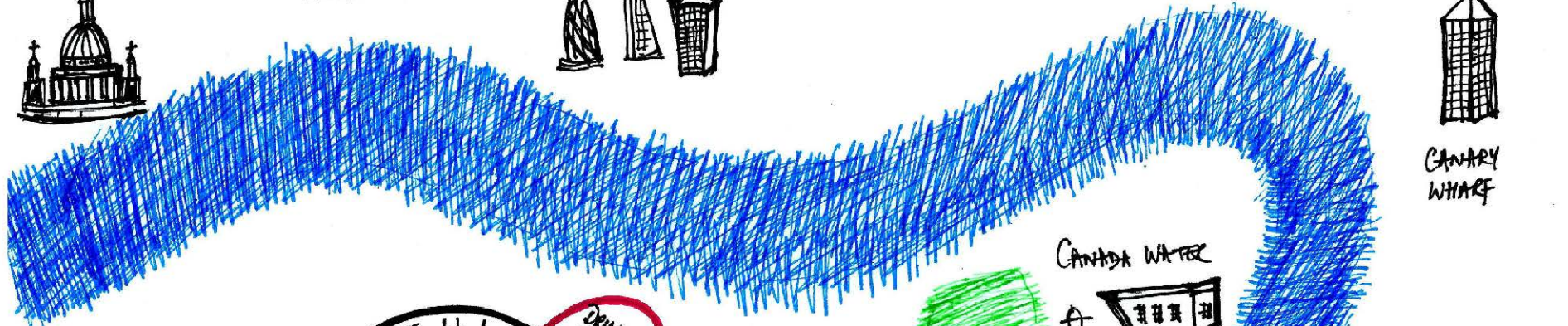




CITY OF LONDON



CANARY WHARF



THE BLUE STRATEGIC VISION

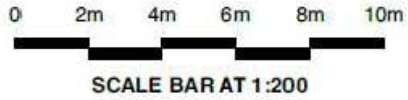
: ATTRACTING GROWTH & CULTURE

: LOCAL, COMMUNITY-LED, AUTHENTIC



OLD KENT ROAD

BERMONDSEY DIVE UNDER



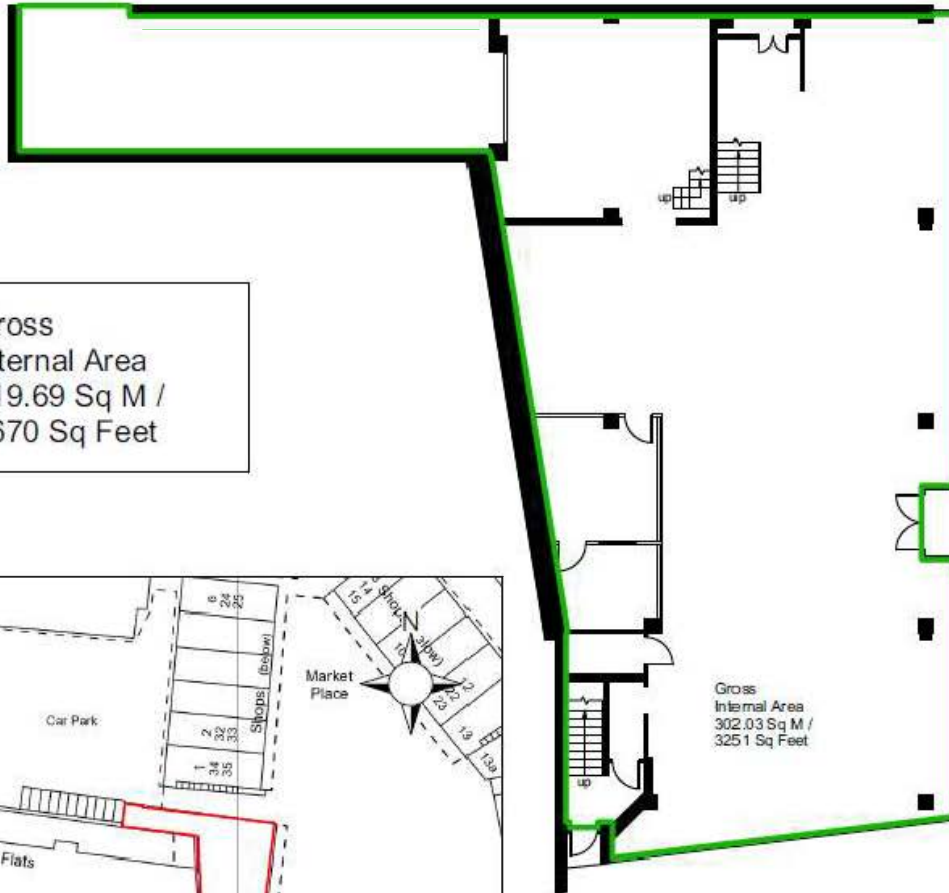
Mezzanine Level



Commercial Premises
223 Southwark Park Road
London
SE16 3TS

Scale 1:200

Gross Internal Area
619.69 Sq M /
6670 Sq Feet



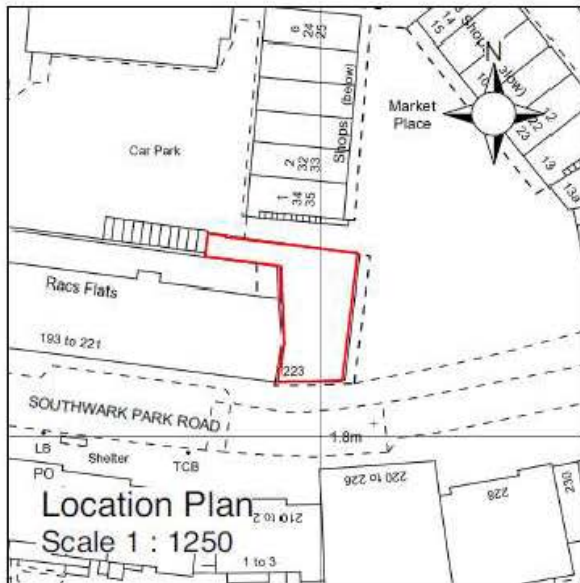
PAVEMENT

SOUTHWARK PARK ROAD

Ground Floor



First Floor



NOTES	
Magnolia Square Limited 57 Rathbone Place London W1T 1JU 020 7479 4855	
PRINT AT A4	
PROJECT 223 Southwark Park Road London SE16 3TS	
MEASURED SURVEY	
DRAWING TITLE GIA	
SCALE 1:200	DATE Sep 2018
DRAWING NUMBER 2	18500

