

# Southwark Council

## Cemeteries

February 11<sup>th</sup> 2015



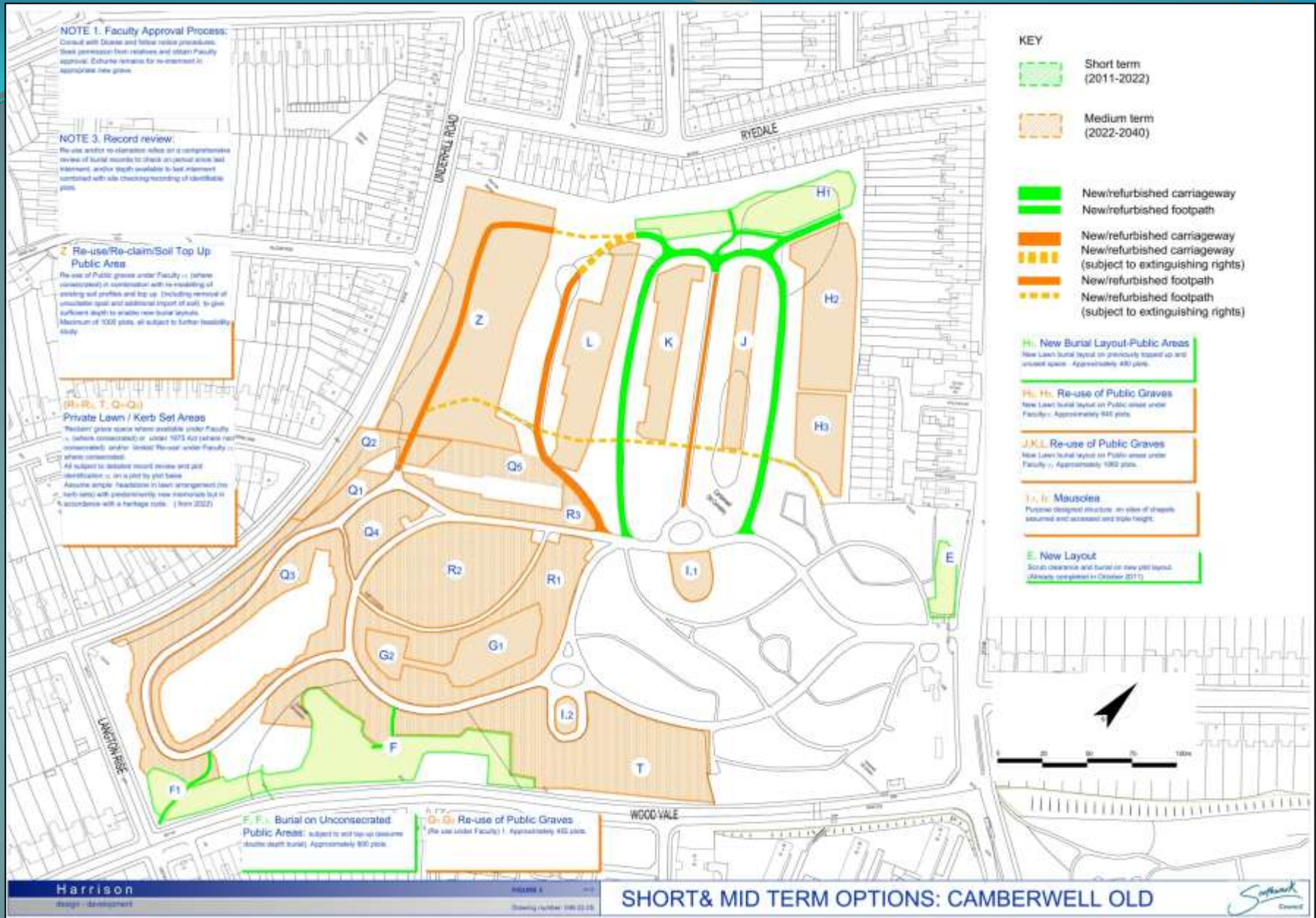




CAMBERWELL OLD SHORT & MID TERM OPTIONS

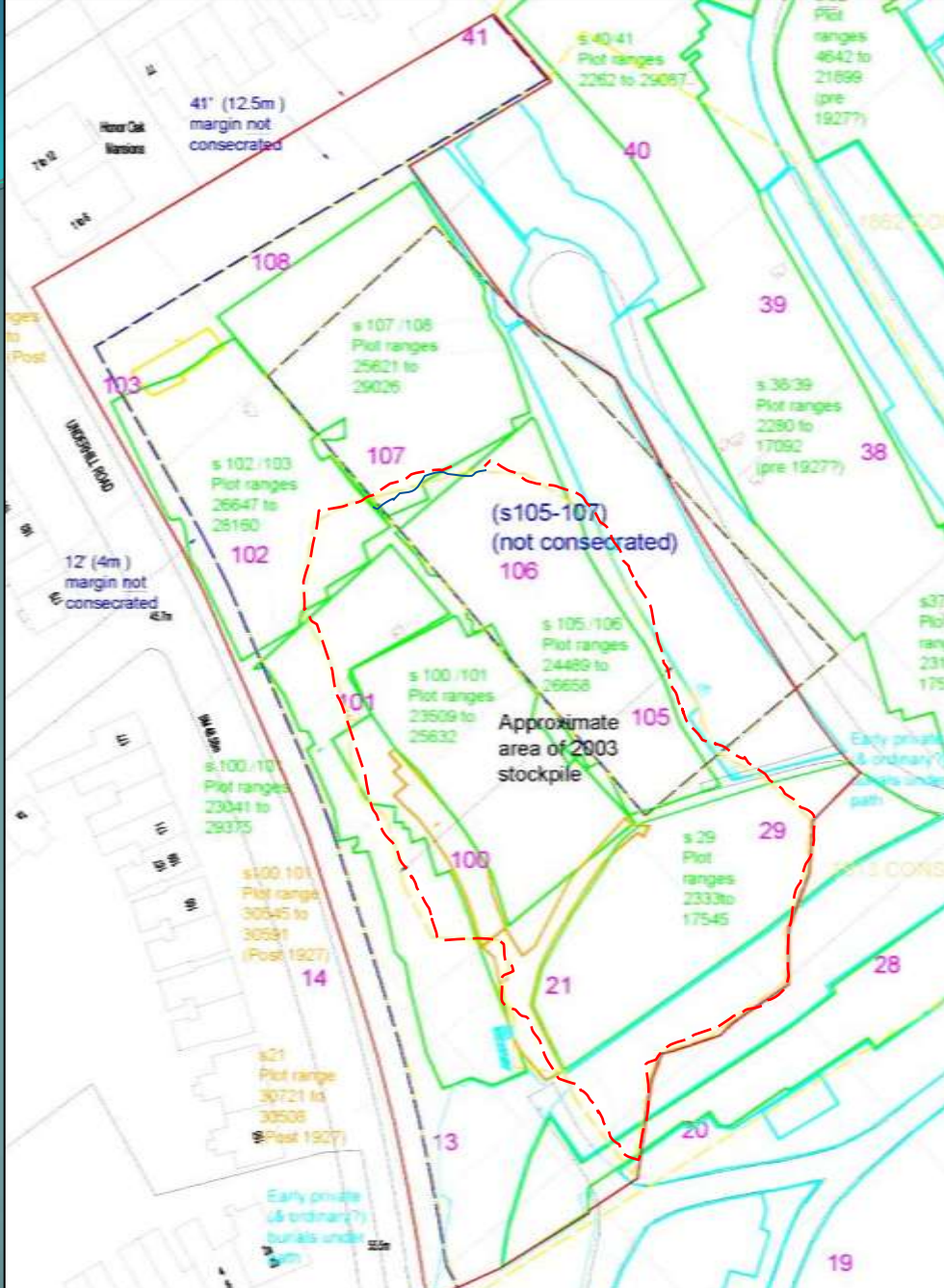






# CAMBERWELL OLD STRATEGY





CAMBERWELL OLD: AREA Z PLOTS & CONSECRATION





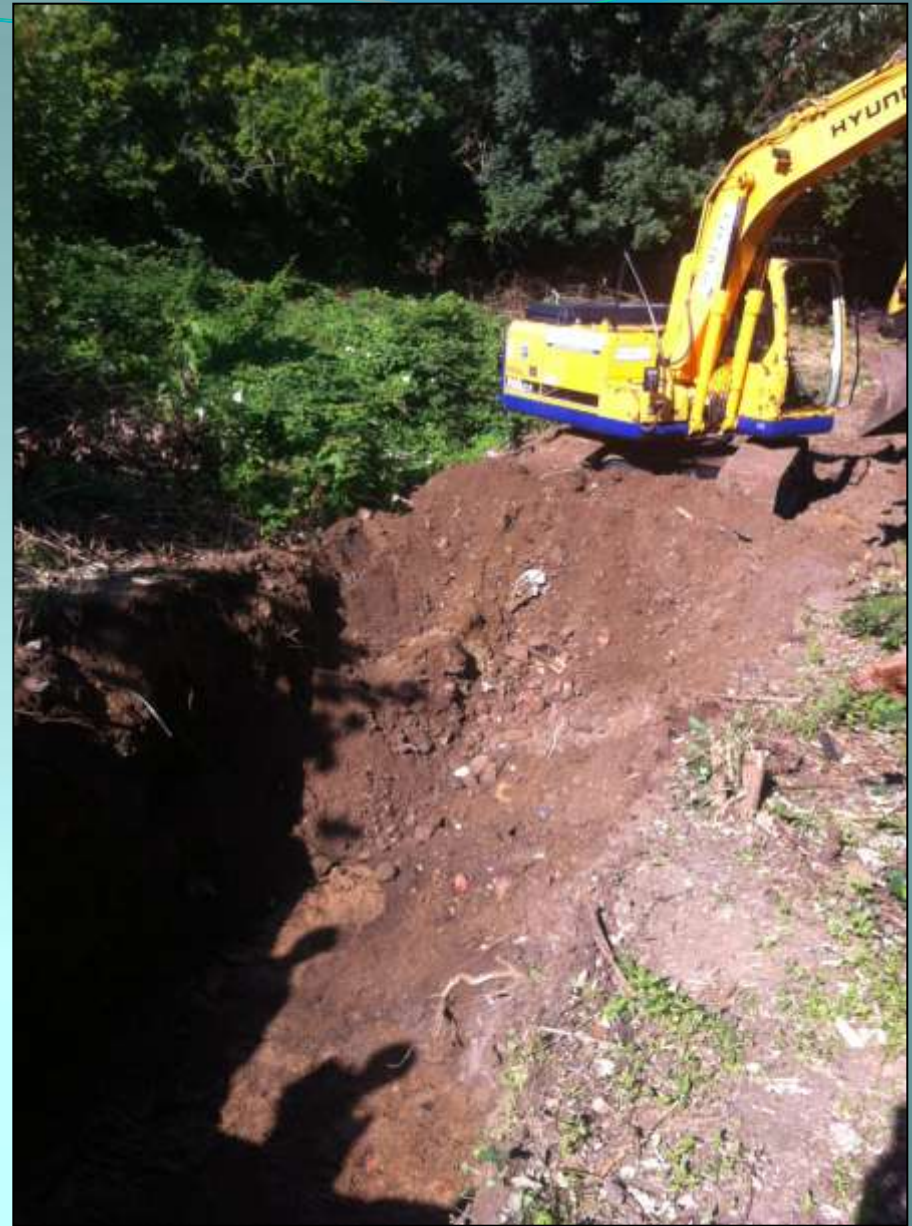
CAMBERWELL OLD: AREA Z 2003 STOCKPILE MATERIAL





CAMBERWELL OLD: AREA Z 2003 STOCKPILE MATERIAL





CAMBERWELL OLD: AREA Z 2003 STOCKPILE MATERIAL









CAMBERWELL OLD: AREA Z PROPOSAL





## CAMBERWELL OLD: AREA Z PROPOSAL









CAMBERWELL OLD: AREA Z PROPOSAL





Above - Secondary Woodland managed via coppice regrowth



Above - Enhanced existing tree views



Above - Secondary woodland boundary + understory planting



Above - Proposed native buffer planting inc new tree planting



# CAMBERWELL OLD: AREA Z PROPOSAL





Above - Secondary Woodland managed via coppice regrowth



Above - Enhanced existing tree views



Above - Secondary woodland boundary + understory planting



Above - Proposed native buffer planting inc new tree planting



# CAMBERWELL OLD: AREA Z PROPOSAL





CAMBERWELL OLD: AREA Z PROPOSAL



# Camberwell Old Cemetery: Short + Medium Term Masterplan, Proposed Tree Preservation Orders & Ecological Considerations

## Example Image Board



Above - Secondary Woodland managed via coppice regime



Above - Enhanced existing tree views



Above - Secondary woodland boundary + understorey planting



Above - Proposed native buffer planting vs new tree planting



## KEY

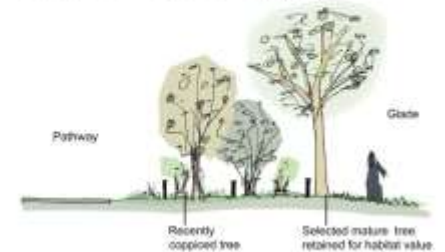
- Secondary Woodland- Historic Burial Areas  
Maintain as woodland, manage for wildlife and landscape through coppice regime, progressive thinning, sequential clearances of scrub. Survey and record make safe monuments.
- Secondary Woodland / scrub cleared  
Approx extent of secondary woodland / scrub cleared (to form 'glade' or new burial areas)
- Existing Trees (proposed Tree Preservation Order)  
Retain and manage
- Existing Trees (proposed group Tree Preservation Order)  
Retain and manage (for screening purposes)
- Secondary Woodland / Boundary  
Retain as buffer planting, manage for wildlife and includes new understorey planting
- Amenity Planting  
Patterns hedge with colourful herbaceous planting and/or annuals
- Meadow Grassland  
Mowing regime related to fern meadows and increase bio diversity
- Proposed Native Planting  
New buffer planting, manage for wildlife
- Proposed Tree Planting  
New tree planting, species chosen for wildlife / biodiversity

## KEY FACTS

- Existing secondary woodland is to be retained and thinned then managed through a coppice regime, to develop a mixed age structure and opportunities to increase bio-diversity and maintain central wildlife corridors.
- Existing open grass 'glade' areas to the centre of secondary woodland areas are to be enlarged.
- Trees within the cemetery have been surveyed. Trees recommended as meriting protection via a Tree Preservation Order have been identified (and are noted upon the drawing)
- Wildlife corridors are to be maintained and their bio diversity value enhanced through additional native planting to new burial areas.

## Coppice Woodland Illustration

Secondary Woodland managed on rotational coppice cycles:







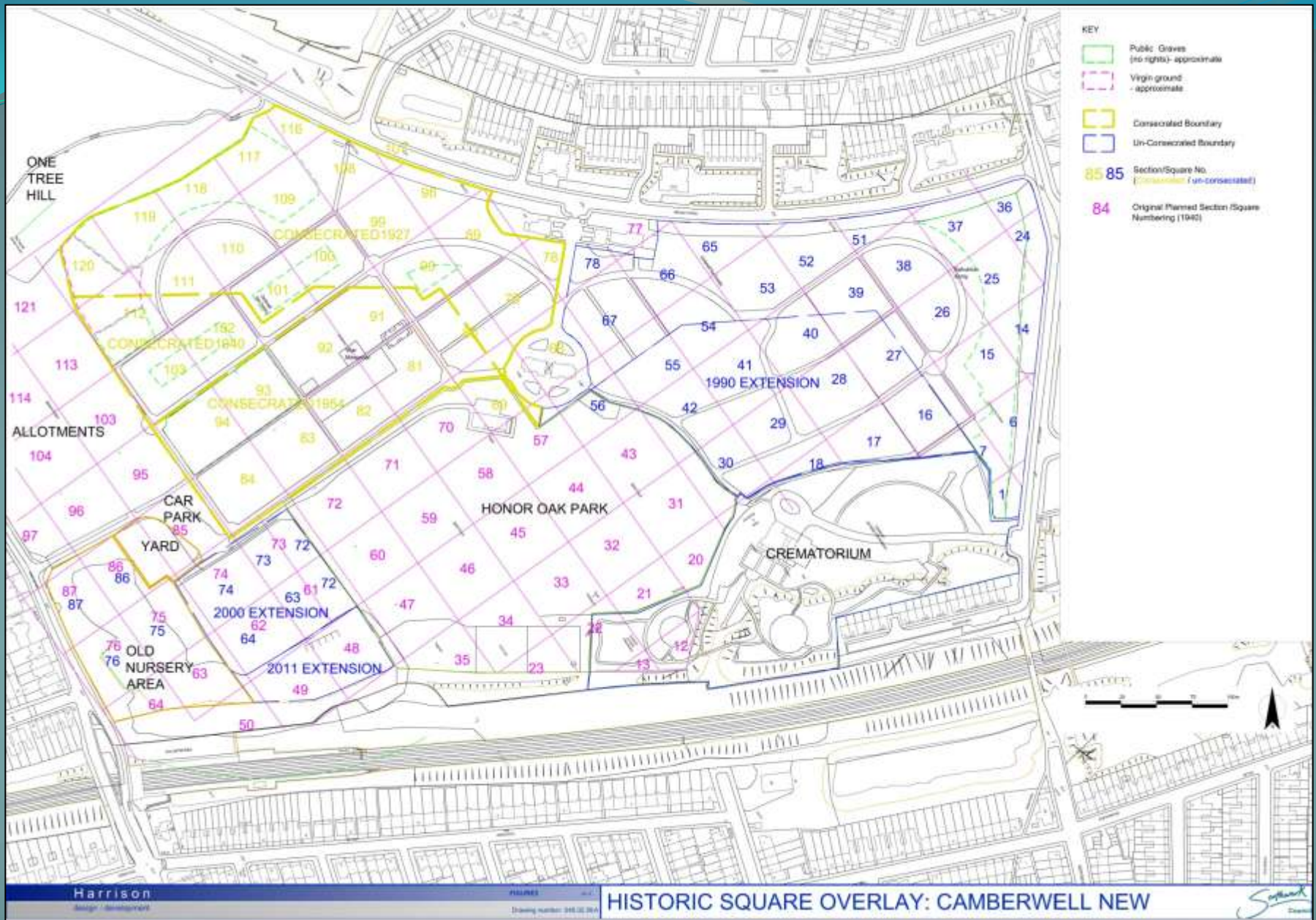
Harrison  
design + development

SHORT & MID TERM OPTIONS: CAMBERWELL NEW



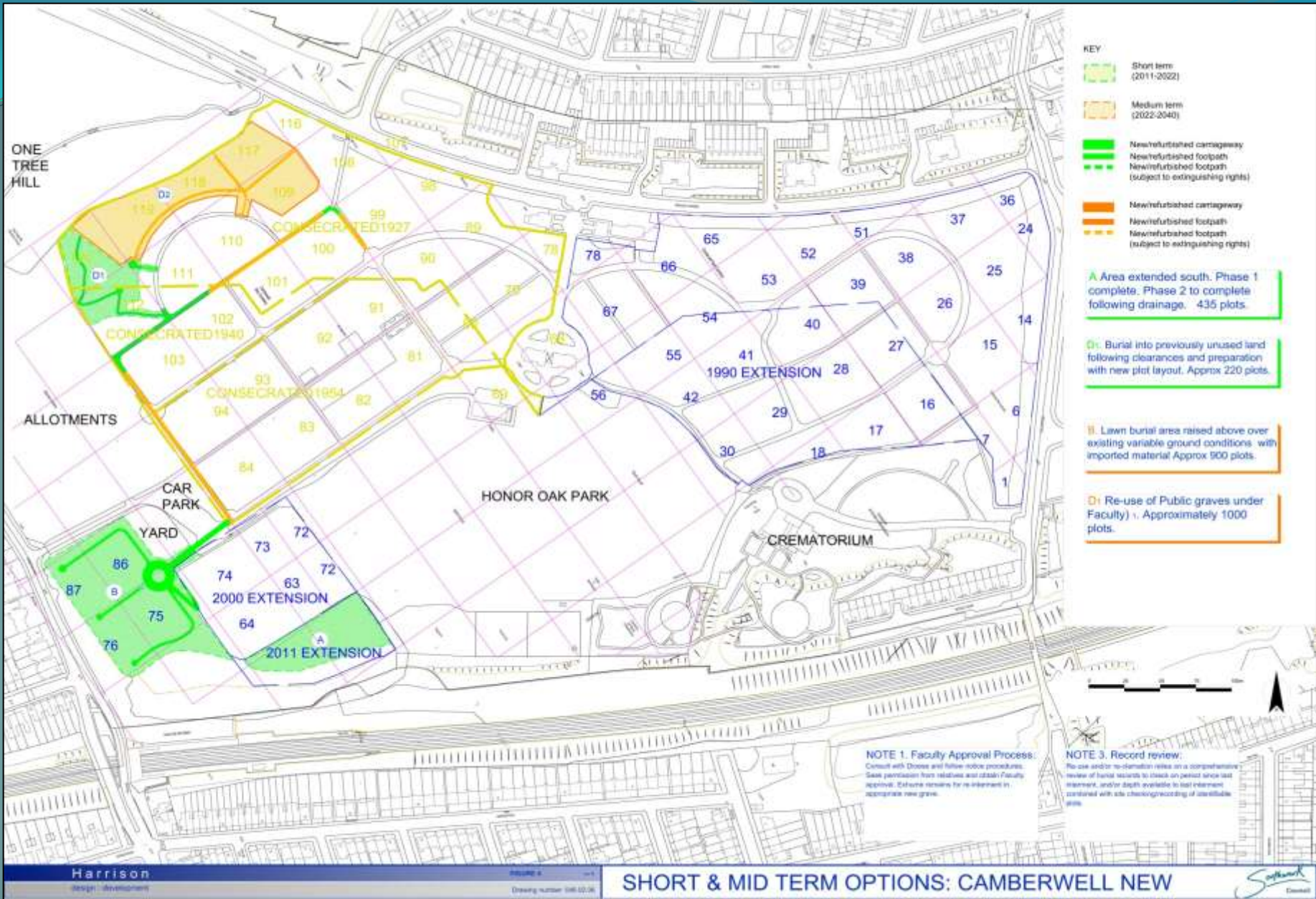
# CAMBERWELL NEW





# CAMBERWELL NEW: HISTORIC OVERLAY





# CAMBERWELL NEW STRATEGY





CAMBERWELL NEW : AREA B EXISTING









CAMBERWELL NEW : AREA B (OLD NURSERY) CURRENT PROPOSAL





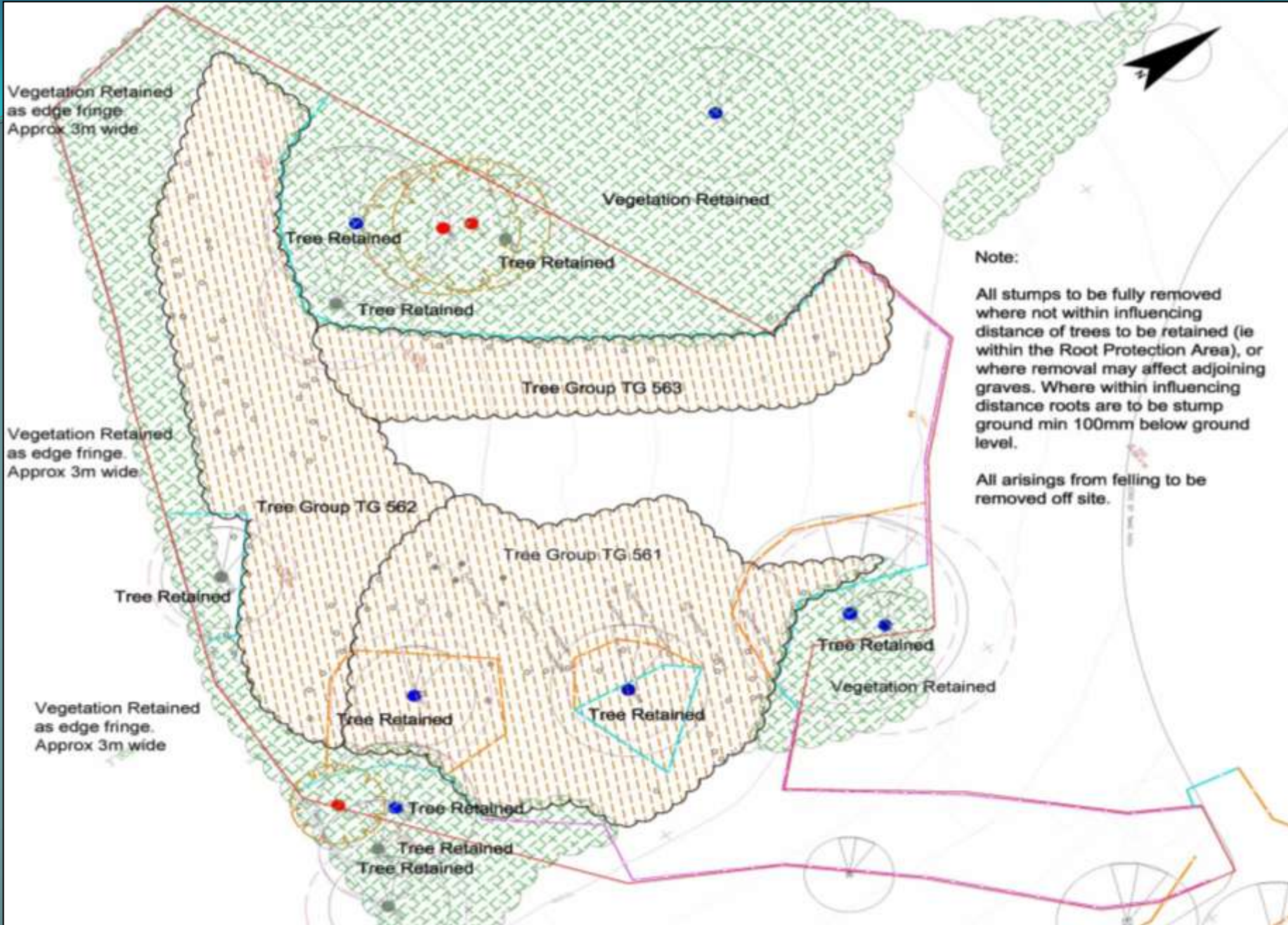
CAMBERWELL NEW : AREA B (OLD NURSERY) EXISTING





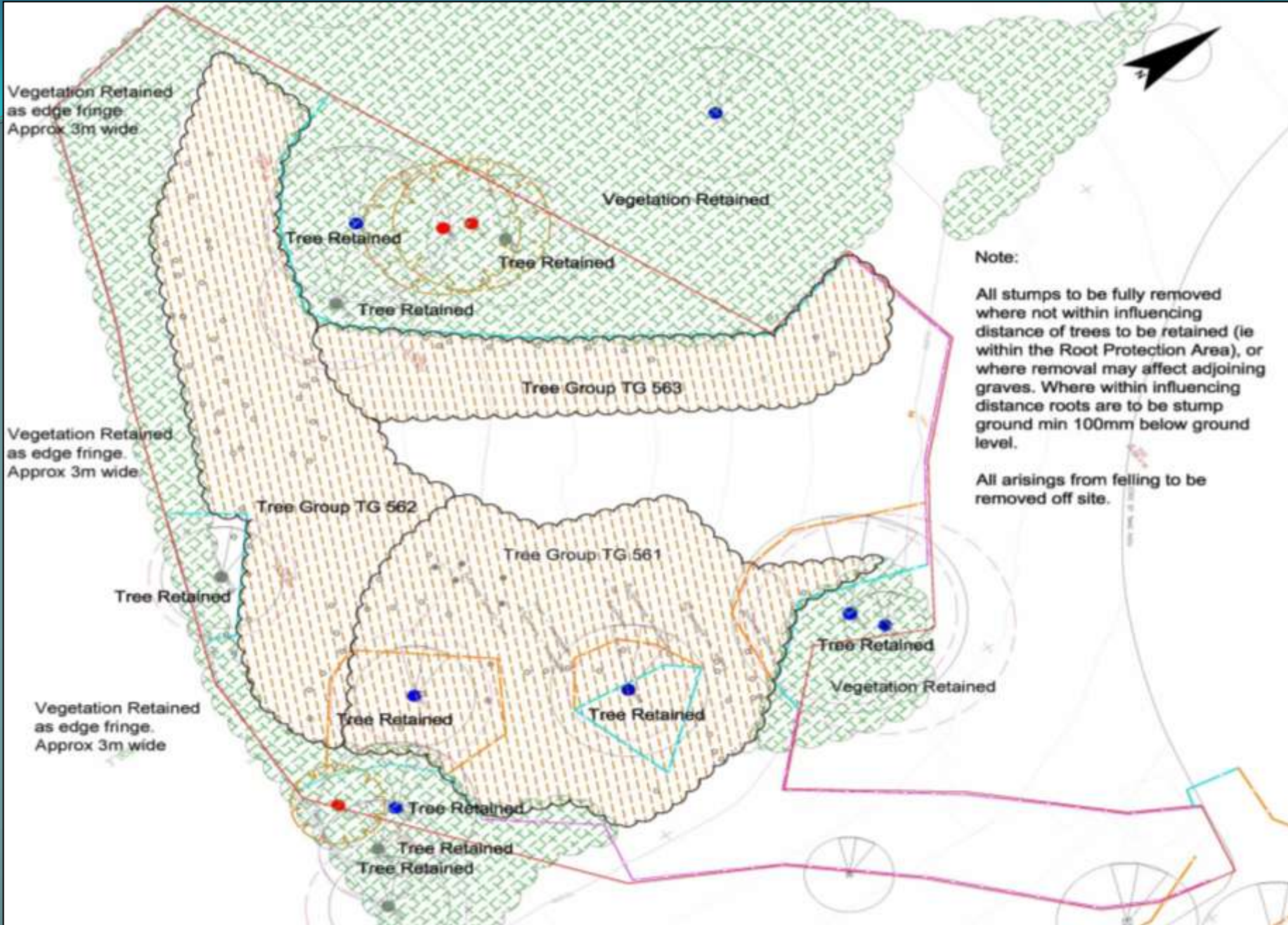
CAMBERWELL NEW: AREA D PROPOSED (STRATEGY)





## CAMBERWELL NEW: AREA D PROPOSED TREES





## CAMBERWELL NEW: AREA D PROPOSED TREES





CAMBERWELL NEW: AREA D1 PROPOSED





CAMBERWELL NEW: AREA D1 PROPOSED





CAMBERWELL NEW: AREA D1 PROPOSED



**NOTE 1. Faculty Approval Process:**

Consult with Diocese and follow notice procedures. Seek permission from relatives and obtain Faculty approval. Estimate repairs for re-orientation on appropriate new grave.

**NOTE 2. Memorial Heritage Code:**

Reclaim/re-use of Private Graves in significant historic areas. Individual plots re-claimed (i.e. burial on top of existing masonry or re-used building remains that are re-oriented in consecrated place adjacent (only where consecrated land and subject to Faculty approval). Grouped Memorials of cultural/historical/archaeological significance would not be offered for reclamation. Memorials to re-claimed/clear plots whenever possible, would be retained, re-worked, 'revised', restored and re-inscribed as appropriate in accordance with a 'Memorial Heritage Code'. Where memorial retention is not possible, new markers would be architecturally appropriate to complement the historic setting.

**NOTE 3. Record review:**

Re-use and/or re-orientation relies on a comprehensive review of burial records to check on period to new last movement, and/or digits available to last interment confirmed with site checking/recording of cemetery plots.



**KEY**

- Historic Monuments (U1 -12)**  
Progressively restore areas of large / distinctive historic memorials (statues / obelisks / vaults). Re-orientation/re-use of grave space under faculty on a strict limited basis in accordance with a strict heritage code. Aim to restore original monuments even where not re-used/reclaimed. (from 2040)
- Historic Monuments - Wooded (V1-4)**  
Progressively clear dense woodland/ scrub and restore areas of large / distinctive historic memorials (statues / obelisks / vaults). Offer re-orientation/re-use of grave space under faculty on a strict basis in accordance with a strict heritage code, restoring and re-inscribing original monuments. (from 2040)
- Historic Core (S, X, X1, Y, Y1, W1-4)**  
Reclaim grave space where available (under faculty where consecrated) under 1975 act where non consecrated) and/or limited re-use under faculty where consecrated.  
Restore, reverse and re-inscribe historic & distinctive kerb-set / headstones, on existing plot arrangements in accordance with a heritage code. (from 2045)
- Private Lawn / Kerb-set Areas (R1-R3, T, Q1-5)**  
Reclaim grave space where available (under faculty where consecrated) under 1975 act where non consecrated) and/or limited re-use under faculty where consecrated. All subject to detailed record review and on a plot by plot basis. Assume simple headstone in lawn arrangement (no kerb sets) with predominantly new memorials according to heritage code. (ongoing from 2022)
- Mausoleum (L1, L2)**  
Purpose designed structure on sites of chapels assumed end accessed and triple height (from 2022)
- New / rehabilitated Cartway**
- New / rehabilitated Footpaths**
- Short / Mid Term Strategy**  
Suits previously carried out under short / mid term strategy proposals on new lawn burial layouts
- Secondary Woodland (O1-6)**  
Maintain as woodland, manage for wildlife and landscape, include some progressive thinning. Develop programme of sequential clearance of scrub, survey and recording of monuments.



**CAMBERWELL OLD: LONG TERM**





- KEY**
- Private kerb set areas- Consecrated (B,D,E,G)
    - Re-use graves and convert to lawn burial (not with memorial or plot)
    - Select kerb set materials retained and re-concrete finished in accordance with Heritage Code (Subject to faculty, and record review)
  - Public lawn areas- Consecrated (F,H)
    - Re-use public graves or new lawn burial plot layout (subject to faculty)
  - Private Lawn Burial areas- Consecrated (K,L,O)
    - Re-use graves on original lawn burial plot layout (subject to faculty)
  - Historic Core Private Kerb- set (G,H)
    - Re-use graves and convert to lawn burial (not with memorial or plot)
    - Select kerb set materials retained and re-concrete finished in accordance with Heritage Code (Subject to change in legislation, and record review)
  - Private Kerb Set Areas - Un-consecrated (C,J,M)
    - Re-use as lawn burial on existing lawn burial layout (subject to change in legislation, and record review)
  - Private Lawn Areas - Un-consecrated (M,N,P)
    - Re-use as lawn burial on existing lawn burial layout (subject to change in legislation, and record review)
  - Public Burial Areas ( Un-consecrated) (I)
    - New lawn burial on existing lawn burial layout (subject to change in legislation, and record review)
  - Historic Private kerb set - Un-consecrated (Cc)
    - Re-use as lawn burial on existing lawn burial layout (subject to change in legislation, and record review)
    - Re-use original plot layout and kerb set - to be re-concrete finished in accordance with Heritage Code
  - New Lawn Burial - Un-consecrated (Aa)
    - New lawn burial area - convert to either enhanced Park (not only as and where the plot and end lawn burial cannot be enhanced in 2025)

**AREA REFERENCE and TARGET DATE FOR BURIALS**

A	B	C	D	E	F	G	H	I	J	K	L	M	N	O	P
2040-2050	2045-2055	2045-2055	2050-2055	2055-2065	2055-2065	2065-2075	2065-2075	2065-2075	2075-2085	2075-2085	2085-2095	2085-2095	2085-2095	2085-2095	2095+

Target dates and areas subject to their actual release and periodic monitoring and review.

- New / enhanced Concreting
- New / enhanced Footpath
- Short / Mid Term Strategy  
Burial carried out under short / mid term strategy approved (2025)
- Consecrated Boundary
- Un-Consecrated Boundary
- Section No  
(Consecrated / Un-consecrated)

**NOTE 1. Faculty Approval Process:**  
Consult with Diocese and follow review procedures. Seek permission from relatives and obtain Faculty approval. Retain remains for reinterment in appropriate new grave.

**NOTE 2. Memorial Heritage Code:**  
Reclamation/Re-use of Private Graves in historic core areas: Individual plots re-claimed (i.e. grave on top of existing remains) or re-used existing remains (flat and re-interred in consecrated place adjacent only where consecrated land and subject to faculty approval). Graves (Memorials of cultural/historical/technical significance) would not be allowed for re-use. Memorials to reclamation-re-use plots where possible, would be retained, re-built, "re-interred" and re-concreted as appropriate in accordance with a "Memorial Heritage Code". Where reclamation-re-use is not possible, new memorials would be aesthetically appropriate to complement the historic setting.

**NOTE 3. Record review:**  
Re-use and/or re-clamation relies on a comprehensive review of burial records to check on period since last interment, and/or depth available to bed interment combined with site clearing/grading of identifiable plots.

# CAMBERWELL NEW: LONG TERM





THANKYOU