

The skate bowl design

The proposed Urban Games facility will be located in Burgess Park, a public park situated near Elephant & Castle within easy reach of Camberwell, Bermondsey and Peckham. The Urban Games facility will be located adjacent to the existing BMX Track.

The first phase of the project involves creation of a ground-breaking concrete bowl, bouldering wall and parkour structure. This will cater for BMX riders, kick scooter riders, roller skaters, skateboarders, free-runner, climbers and boulderers.

The skate bowl has been design by experts and will be built by specialists. The aim is for it to be a world class facility. The only comparable bowl in Europe is the destination facility, the Reubén Alcántara Skatepark in Málaga. The proposal takes the best elements of this bowl and expands it to cater for all-abilities of rider, which has inspired the design. The spectator, stood at the top of the gently sloped access ramp, is just as likely to see a line of children being coached in a circuit around the bowl, as they are to see experienced riders pedalling hard to get air high above the same concrete curves. The bowl will incorporate such features as hips, spine, box, clam shell, banked extensions, tombstones and vert sections.

The project will provide a free unsupervised open access, sport and play facility for all users from beginners to experts. The facility is likely to be flood lit until 10pm to provide safe level of lighting for users.



a BMX AND SKATE BOWL



b SPECTATING SPACE



c CLIMBING WALL



d NEW SHARED PEDESTRIAN & CYCLE WAY



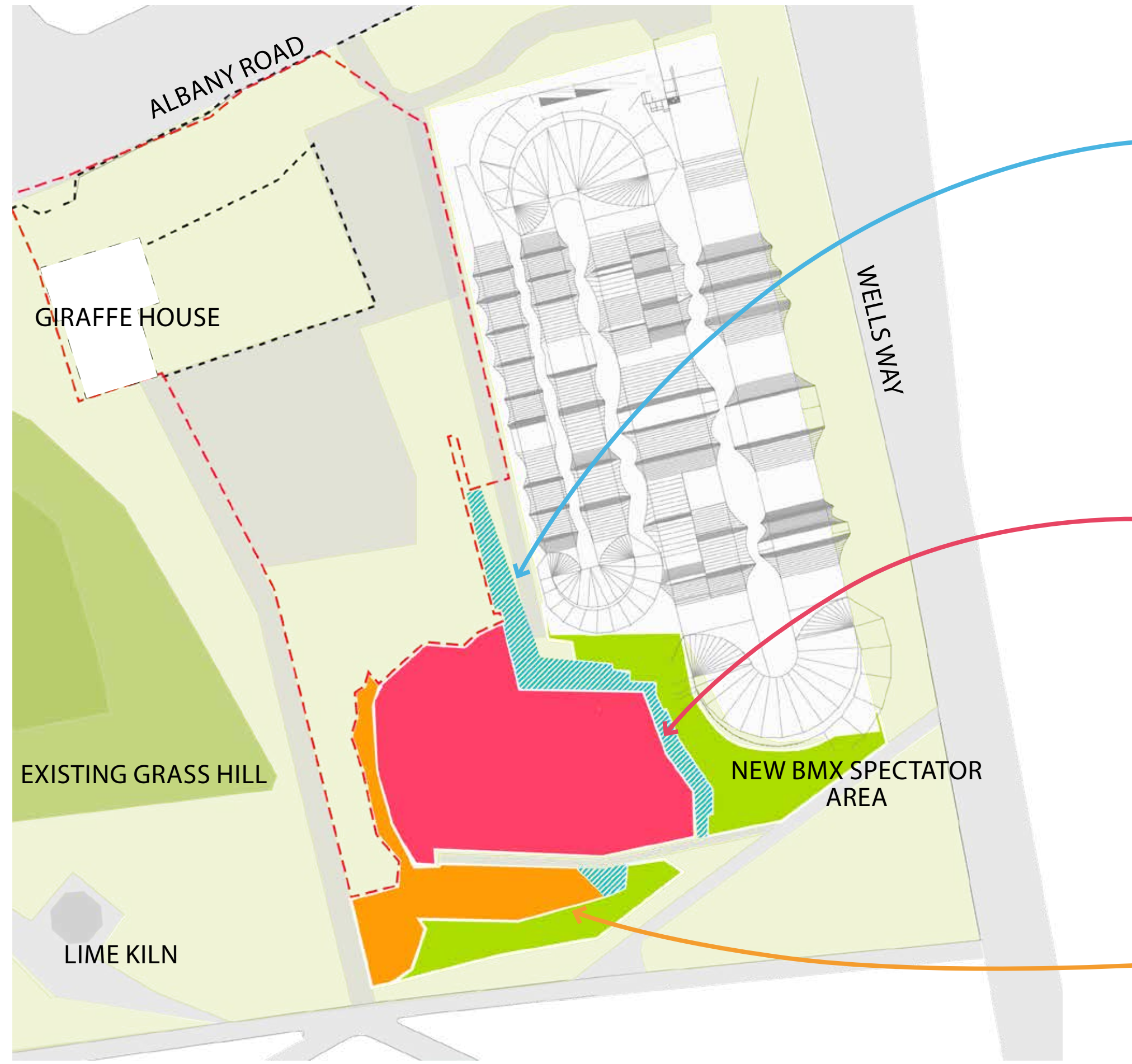
- 1** EXISTING TARMAC AREA
- 2** EXISTING BMX TRACK
- a** BMX AND SKATE BOWL
- b** SPECTATING SPACE
- c** CLIMBING WALL
- d** NEW SHARED PEDESTRIAN & CYCLE WAY
- e** PARKOUR AREA
- f** NEW TREE PLANTING



EXISTING TRAMAC AREA - EXISTING PLAY AREA TO BE REMOVED AT PHASE 2 (DATE TBC)



EXISTING BUILDING TO BE REMOVED IN PHASE 2 (DATE TBC)



NEW PARKOUR/FREE RUNNING



NEW WHEELED SPORTS TRICKS/SKILLS



NEW BOULDERING/CLIMBING

URBAN GAMES PRECEDENT



MALOV-AXIS, COPENHAGEN



DRAPERS FIELD, LONDON UK



REUBÉN ALCÁNTARA SKATEPARK, MÁLAGA



LEMVIG URBAN SPORTS INTEGRATED PARK, DENMARK

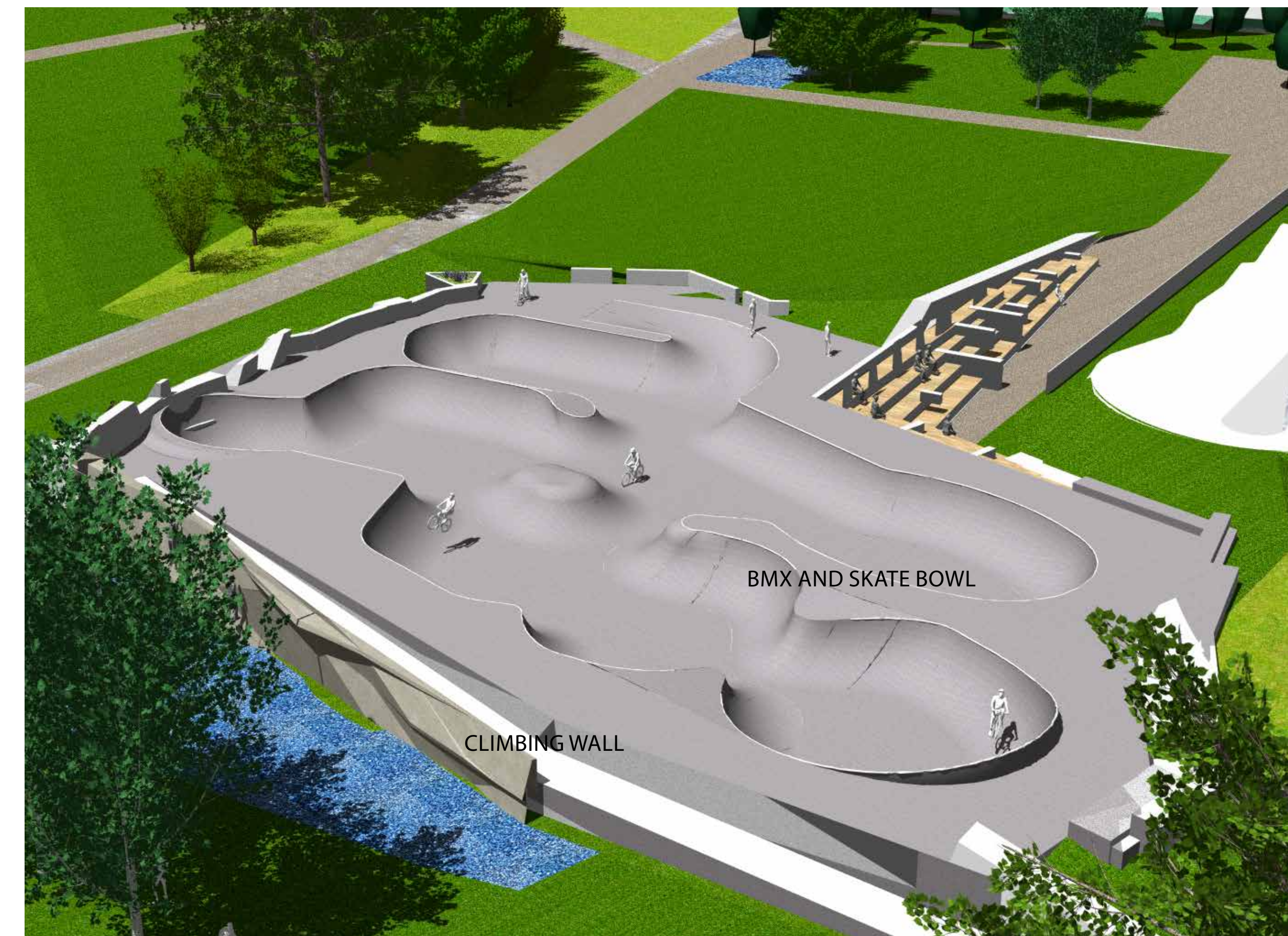


OUTDOOR CLIMBING WALL

Which sport will be provided?

The facility will provide for BMX riders, kick scooter riders, roller skaters, skateboarders, free-runners, climbers and boulderers. London has also a high number of climbers, which is rapidly increasing with the explosion of bouldering walls across the city. In contrast, there are limited outdoor climbing opportunities. The creation of the bowl, built up above ground, provides the opportunity to create an outdoor, accessible climbing structure. The climbing facilities will be suitable for beginners to experts, the wall angles and sizes of hold will be varied along its length. There will be easy terrain that can be climbed/played upon in trainers, or used as a warm-up for the more challenging sections of the wall. The traversing and bouldering walls will feature slabs, overhangs, roofs, corners, aerates and cracks.

BMXing has been in the Olympic games for some years and climbing and skateboarding have recently become Olympic sports. Climbing is a core discipline in parkour/free-running movement, along with jumping, swinging and vaulting. The first phase work will create a significant new parkour spot, enhancing London's position in the global parkour scene. This is a place where anyone can turn up, with or without wheels, to play and challenge themselves, in an inclusive community space.



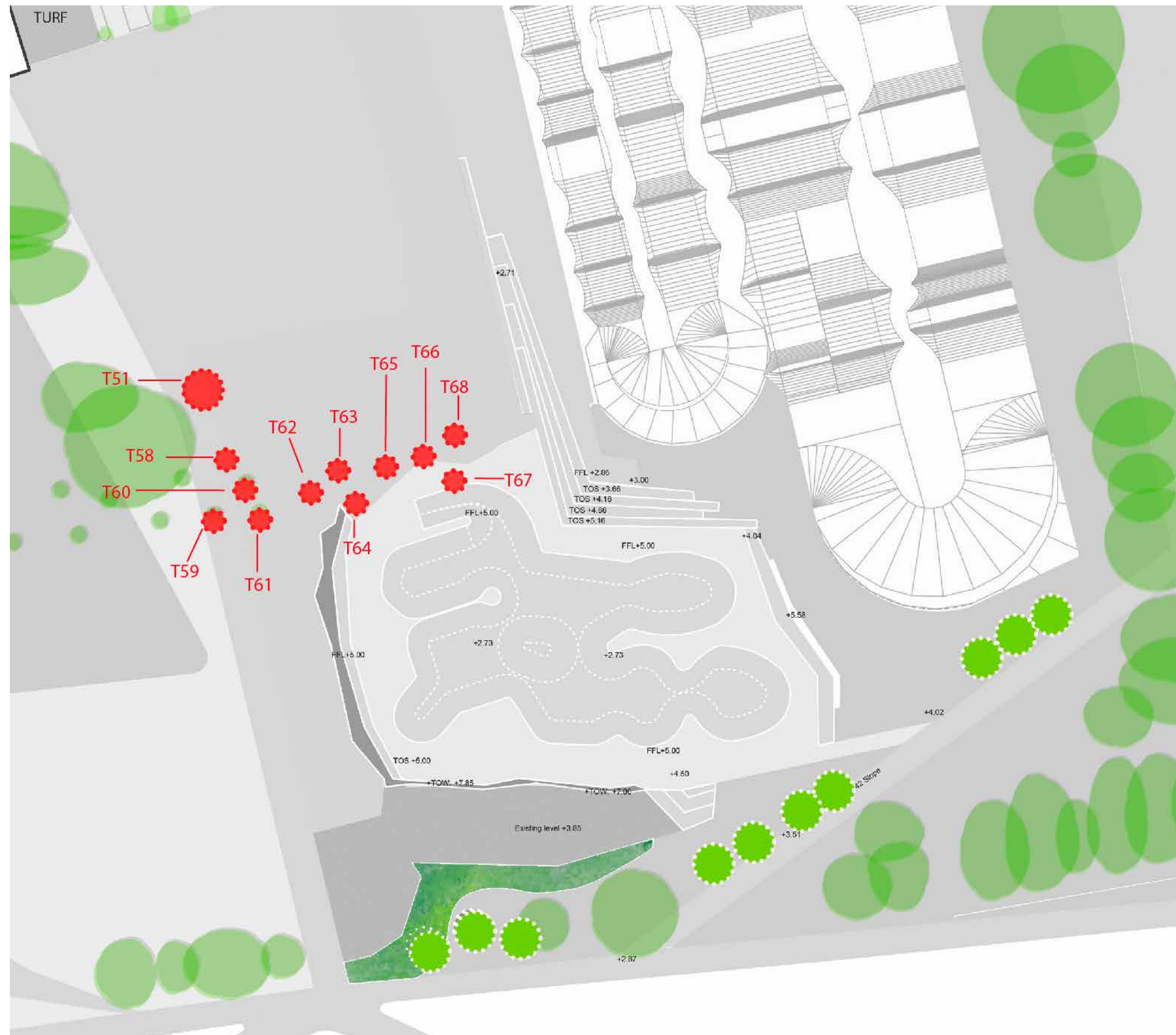
AERIAL VIEW FROM SOUTH EAST

BIODIVERSITY AND PLANTING

Trees

No trees are planned to be felled as part of this project. 12 young trees will be transplanted and relocated within Burgess Park and the grass hill will need to be reshaped to facilitate construction of the skate bowl. New trees will be planted as part of this project.

- EXISTING TREE TO BE RETAINED
- NEW TREE
- TREES TO BE RELOCATED
- NEW PLANTING



Nature improvement

Unfortunately an estimated 3,000m² of grass will be lost due to the construction of the skate park, however a variety of ecological improvements will be made within the park to counteract this, and encourage wildlife to flourish. At this early stage we are looking at the following:

- Planting at least 10 new trees within the park or on nearby streets
- Planting 3,000m² of wildflower meadow or other wildlife friendly planting
- Including sustainable drainage features such as planted swales and rain gardens
- Bird and bat boxes
- Stage beetle loggeries or insect hotels
- A pond, if a suitable location can be found

Plants that are resilient to climate change, great for bees and other insects, night scented for bats and native species will be chosen. New lighting will be designed to keep the impact on bats to a minimum, by having directional light and switching off with a timer. We want your ideas so please get in touch.



RAIN GARDENS



BIRD BOXES



INSECT HOTEL



CREATING WILDLIFE FRIENDLY HABITATS

PLANTING PALETTE



SNOWY WOODRUSH
FLOWERING:
JUNE-JULY



DAVID VIBURNUM
FLOWERING:
DECEMBER - APRIL



LILY TURF
FLOWERING:
AUGUST - NOVEMBER



RENARD GERANIUM
FLOWERING:
JUNE - AUGUST



PRIMROSE
FLOWERING:
MARCH- MAY



ROCK ROSE SUNSET
FLOWERING:
JUNE - AUGUST

What Happens Next?

Following this public consultation, feedback from respondents will be analysed and the design for Urban Games will be updated and more detail added for the second consultation. The detailed designs will be submitted in a planning application. Technical design work is then required to provide information for seeking a building contractor. Once builders have been appointed construction is expected to begin next year.

Phasing

Phase 1:

This will cover work to deliver the skate bowl, bouldering wall, parkour structure and a new footpath.

Phase 2:

Officers are seeking to secure funding to deliver Phase 2 of the project, adding flow and street areas on a large scale, expanding the parkour, climbing and callisthenics/fitness areas and adding landscaped slopes around the bowl. A new plaza and street and skate elements will also be added.

Your Comments

Don't forget to join the project mailing list by emailing or calling for further updates on the project.

You can do so by visiting:

www.southwark.gov.uk/skatepark

Emailing

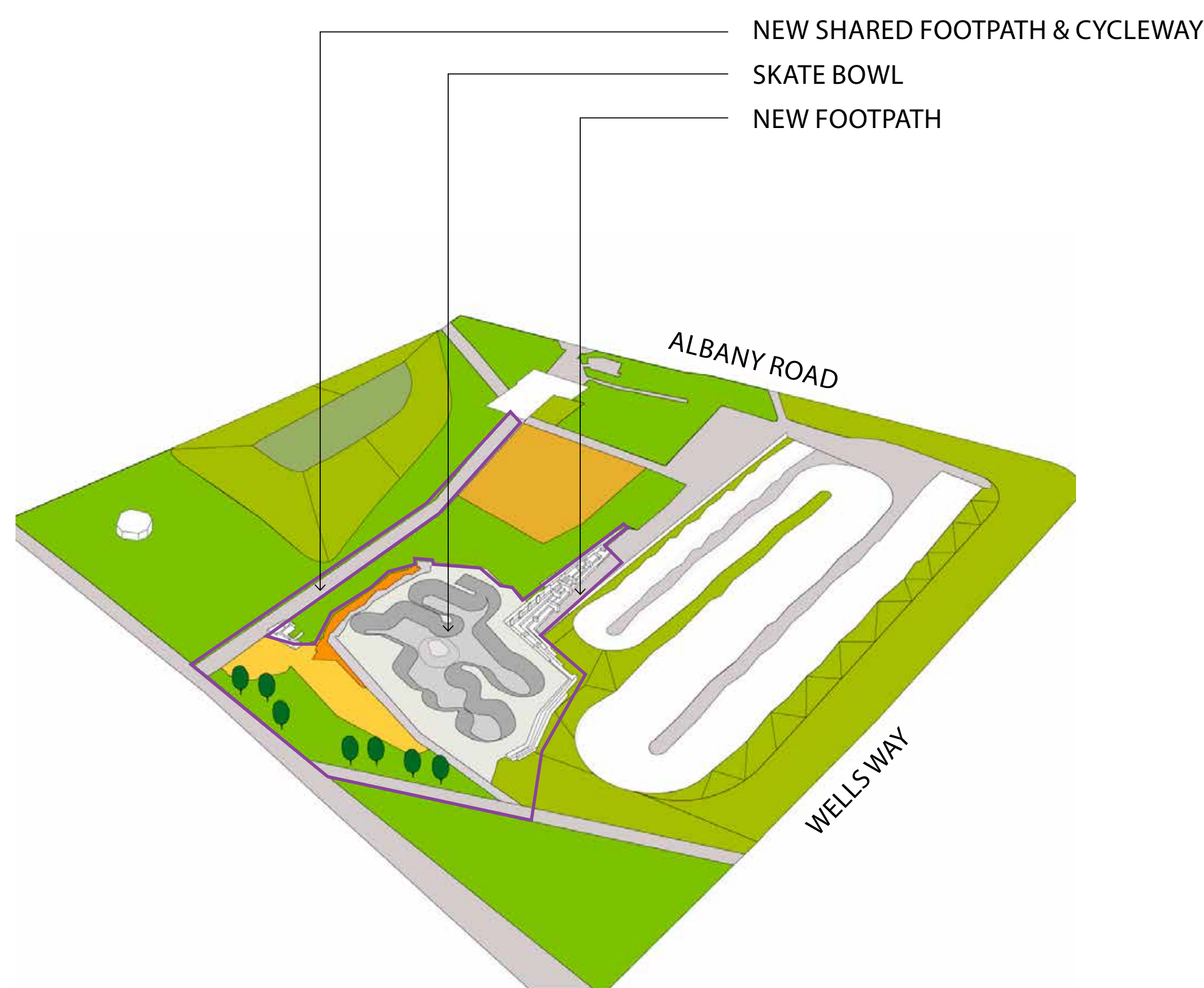
parcs@southwark.gov.uk

or calling

020 7525 5133

There will be further opportunity to comment at the next consultation.

PHASE 1 - TO BEGIN 2021



PHASE 2 - DATE TBC

