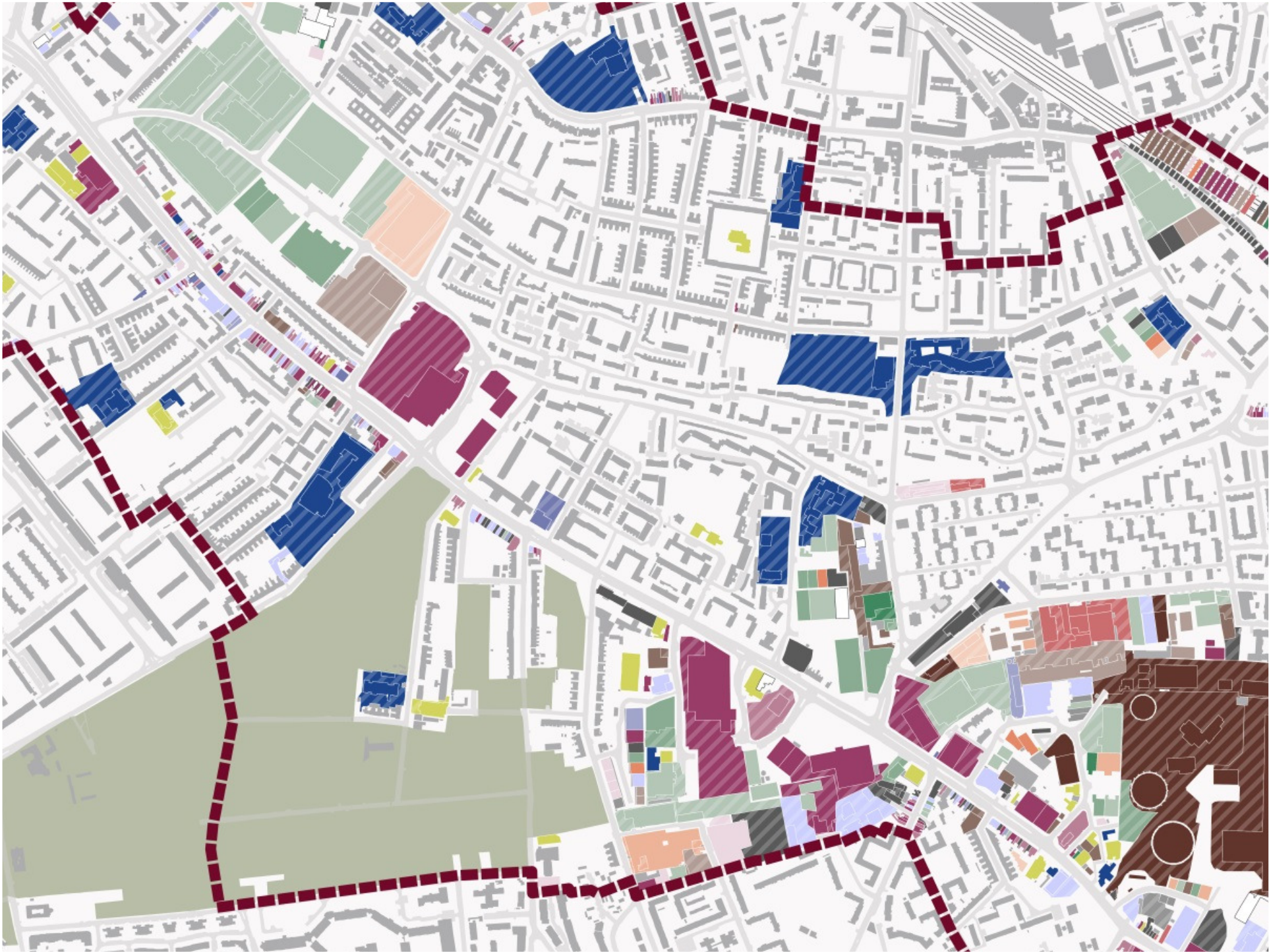


MAYOR OF LONDON

OLD KENT ROAD

COMMUNITY FORUM | 1 July 2015







STORE
WARE & ELECTRONICS

LE PANIER A BRIOCHE
BAKERY & PATISSERIE
267 OLD KENT ROAD TEL: 0207 2377692

BAKERY
BIRTHDAY CAKE WEDDING CAKE PATISSERIE COFFEE

269 **LINGS CHEMIST** 269

PHONE CLINIC
LAPTOP & PC REPAIRS PARTS ACCESSORIES
7 & MOBILE TECHNOLOGY CONSULTANT

RED ROUTE
No stopping
Mon-Sat
7am-7pm
Except 10am-4pm
loading
max 20 mins
max 3 hours

cash
Bank Machine

Phone Clinic
Apply for Heating Repairs
Party & Ant Accessories



BABIES 'R' US

HALF PRICE TOYS

TOYS 'R' US

**BABIES 'R' US
END SEASON
SALE
BABIES 'R' US**

**END SEASON
SALE
BABIES 'R' US**

**END SEASON
SALE
BABIES 'R' US**



#LidlSurprises

We think our food is great.
But don't believe us,
ask our customers.

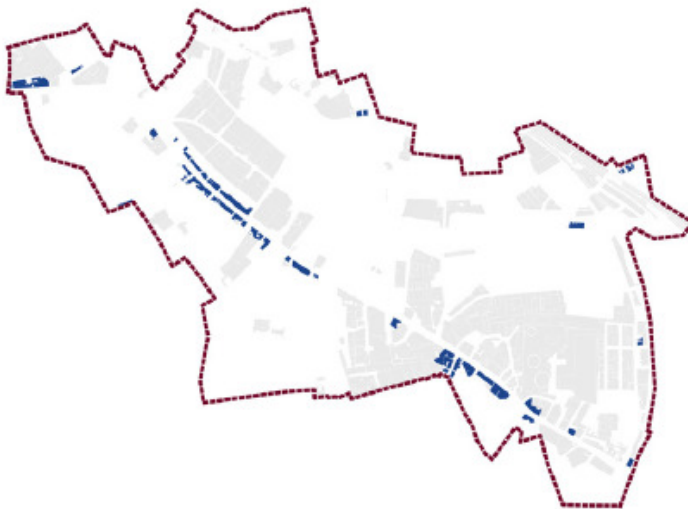
With your friends

WELCOME TO LIDL

Bus lane

MASSINGER STREET SE1

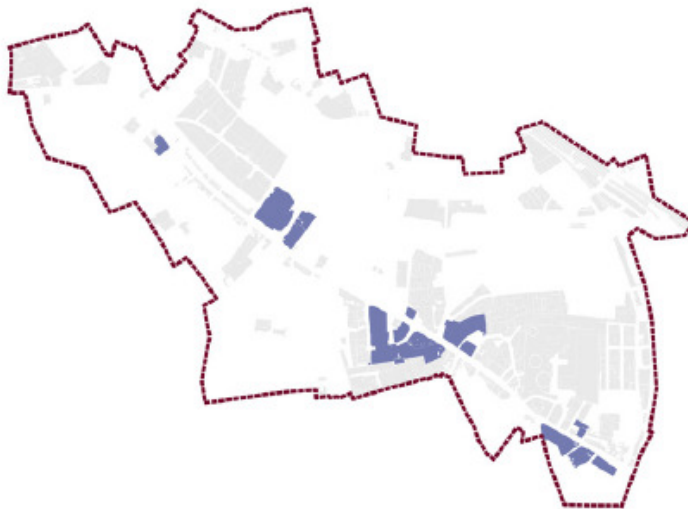
HIGH STREET



Traditional high street with small retail units on the groundfloor and other uses above.

No. businesses	272 (36%)
No. employees	1139 (12%)
Avg. empl. density	220
Vacancy rate	15%

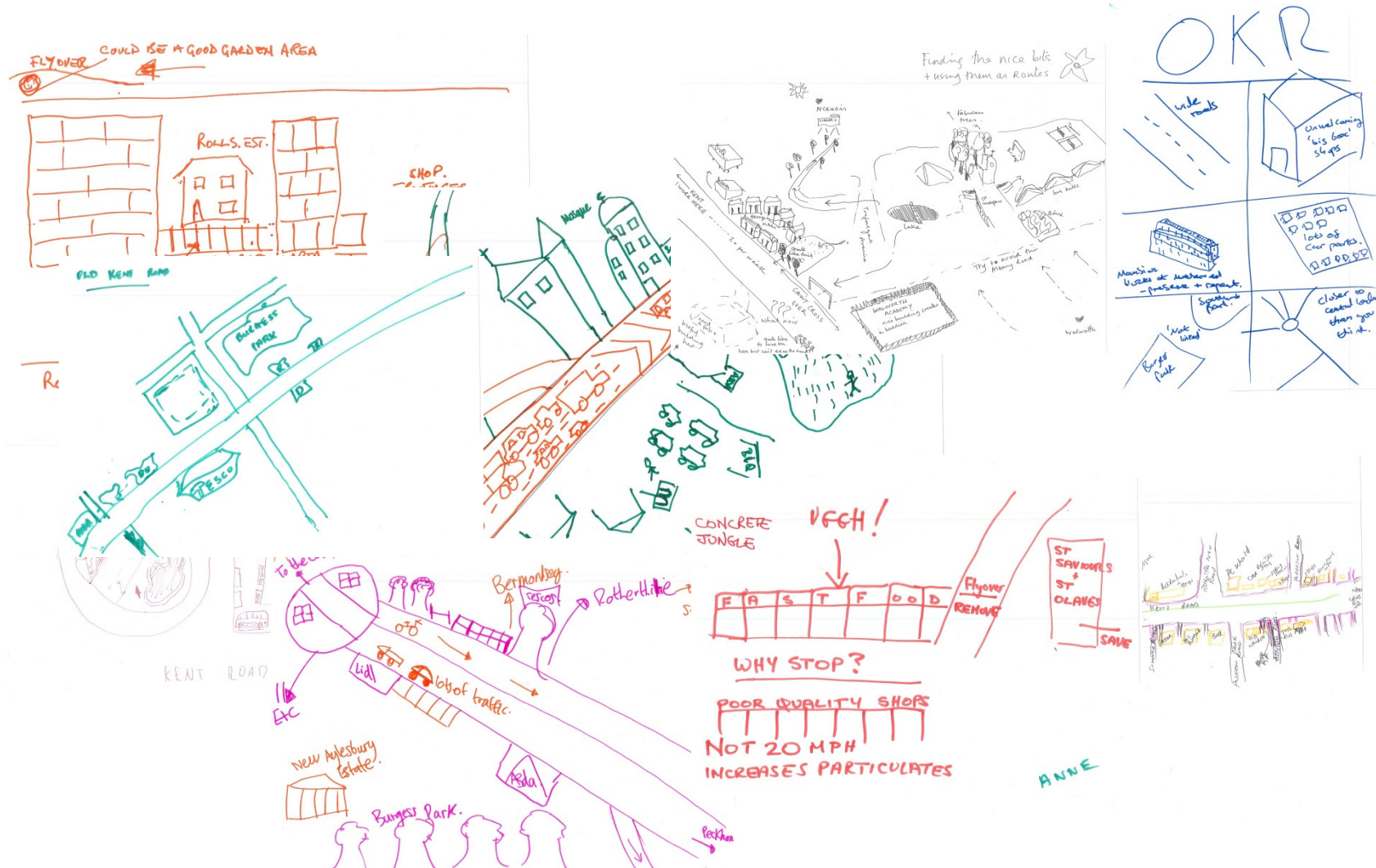
RETAIL PARK



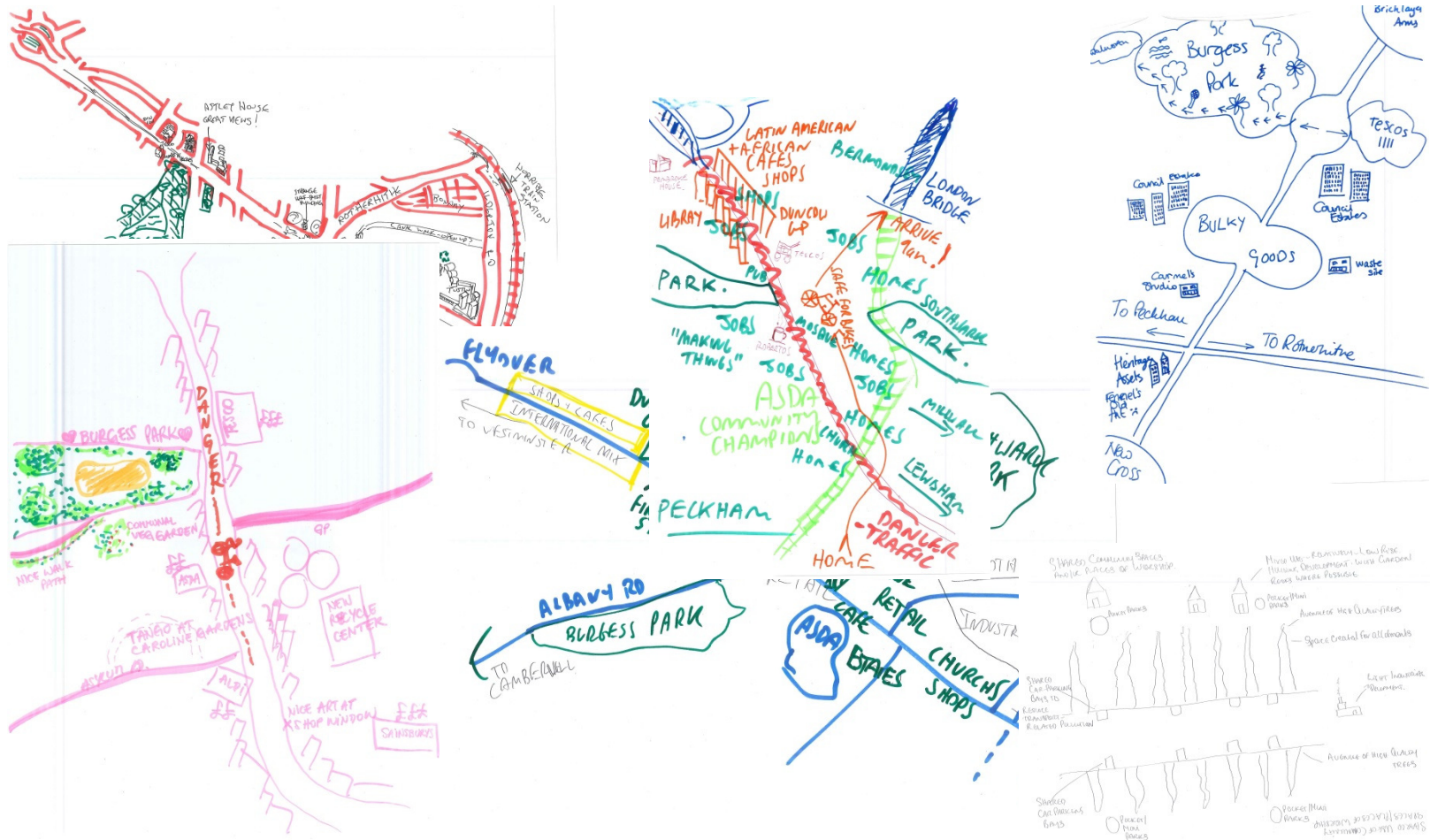
Large, single storey retail sheds with large amounts of customer parking.

No. businesses	21 (3%)
No. employees	695 (7%)
Avg. empl. density	47
Vacancy rate	0%

Of all the 44 maps produced during the community forum meeting...

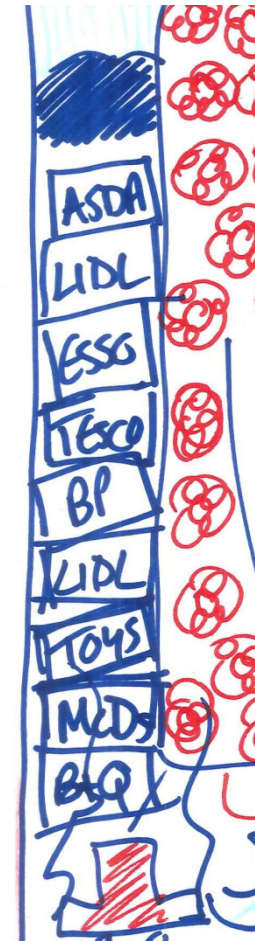


...37 mentioned or referenced retail, shops or shopping in some way



“Big box retail”

By a large majority...



...big box retail was mentioned the highest number of times.

A few maps portrayed big box retail positively:



ASDA
COMMUNITY
CHAMPIONS

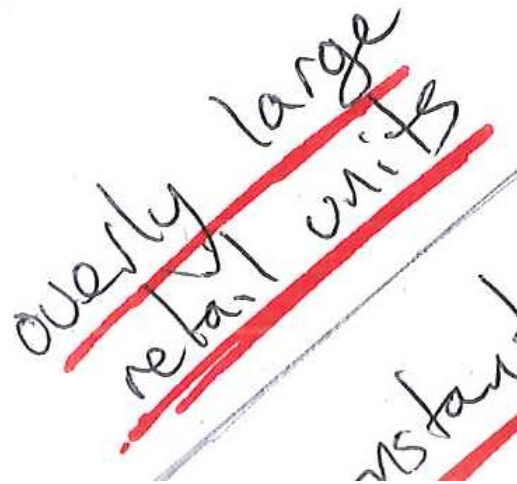


LIDL
(yum!)



Bigger shops keep...

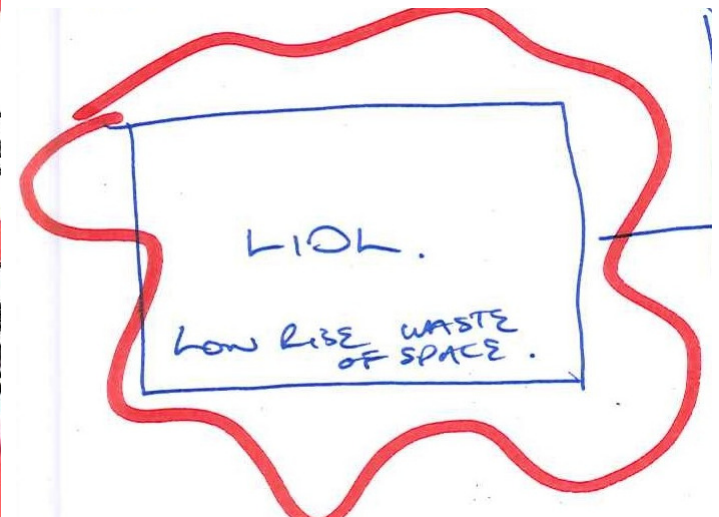
Although these were outweighed by the number of negative representations:



~~overly large
retail units~~



WASTE
OF SPACE
ASDA
LIDL
CIVIC
CENTRE

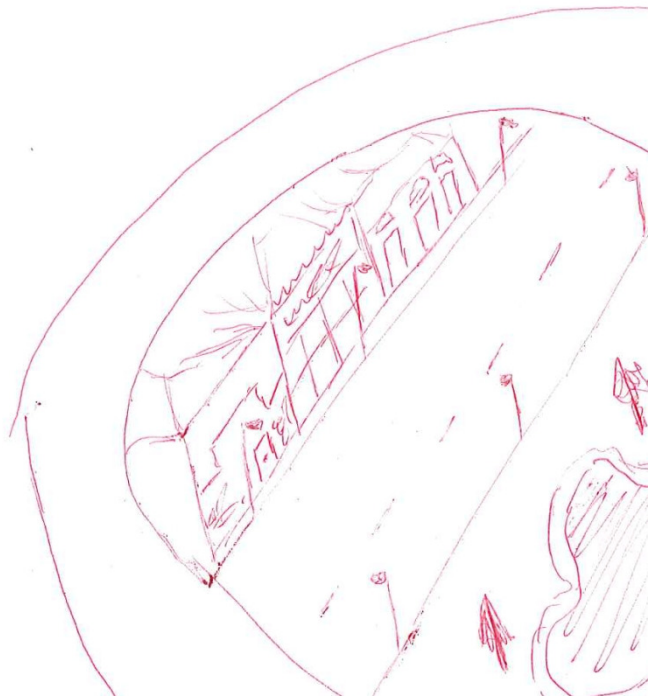


LIDL.
LOW RISE WASTE
OF SPACE.

The diversity (especially ethnic diversity) of shops and cafés

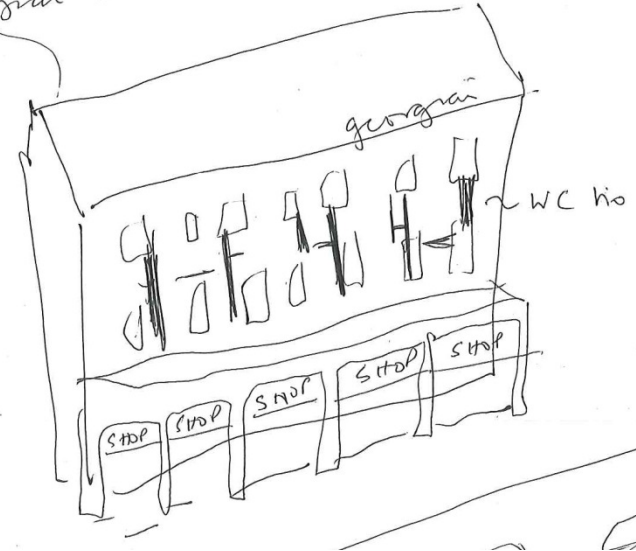


Other clusters of shops that specifically form frontages or parades were identified several times...



I was once a georgian building

revised front



PERIOD SHOP
FRONTS

Finally, fast food outlets were one of the most commonly identified elements of the retail offer along the Old Kent Road..

