

The Development Team

Who we are and what we do



Southwark Council is committed to building 11000 new council homes by 2043, with at least 1000 by 2022. In 2014, a Charter of Principles was agreed that would determine how the council will work with residents to deliver its new Council Homes.

Two of these commitments were:

- Consultation will be led by project groups of residents, stakeholders and councillors
- For each scheme, residents/stakeholders project group of interested stakeholders will be set-up to regularly meet with the development team on the delivery of the new homes



▲ Southwark Council development: Long Lane



▲ Pitman Tozer Architects: Monier Road, Hackney

PITMAN TOZER ARCHITECTS

We are a growing studio of energetic, engaged and curious architects. We co-create schemes, each with a distinctive identity, borne out of considered research into the social, cultural and environmental nature of a place.

Our approach is inclusive, collaborative and responsive. Our process is founded on a creative intelligence that balances imagination and pragmatism to design and deliver beautiful and inspiring places. Previous work includes the award-winning Mint Street development in Bethnal Green and our recently completed Monier Road development in Hackney.



▲ Pitman Tozer Architects: Mint Street, Bethnal Green



▲ Pitman Tozer Architects: Mint Street, Bethnal Green

How to get in touch

We would welcome your feedback and suggestions on our initial plans at Heaton Road. You can tell us by:

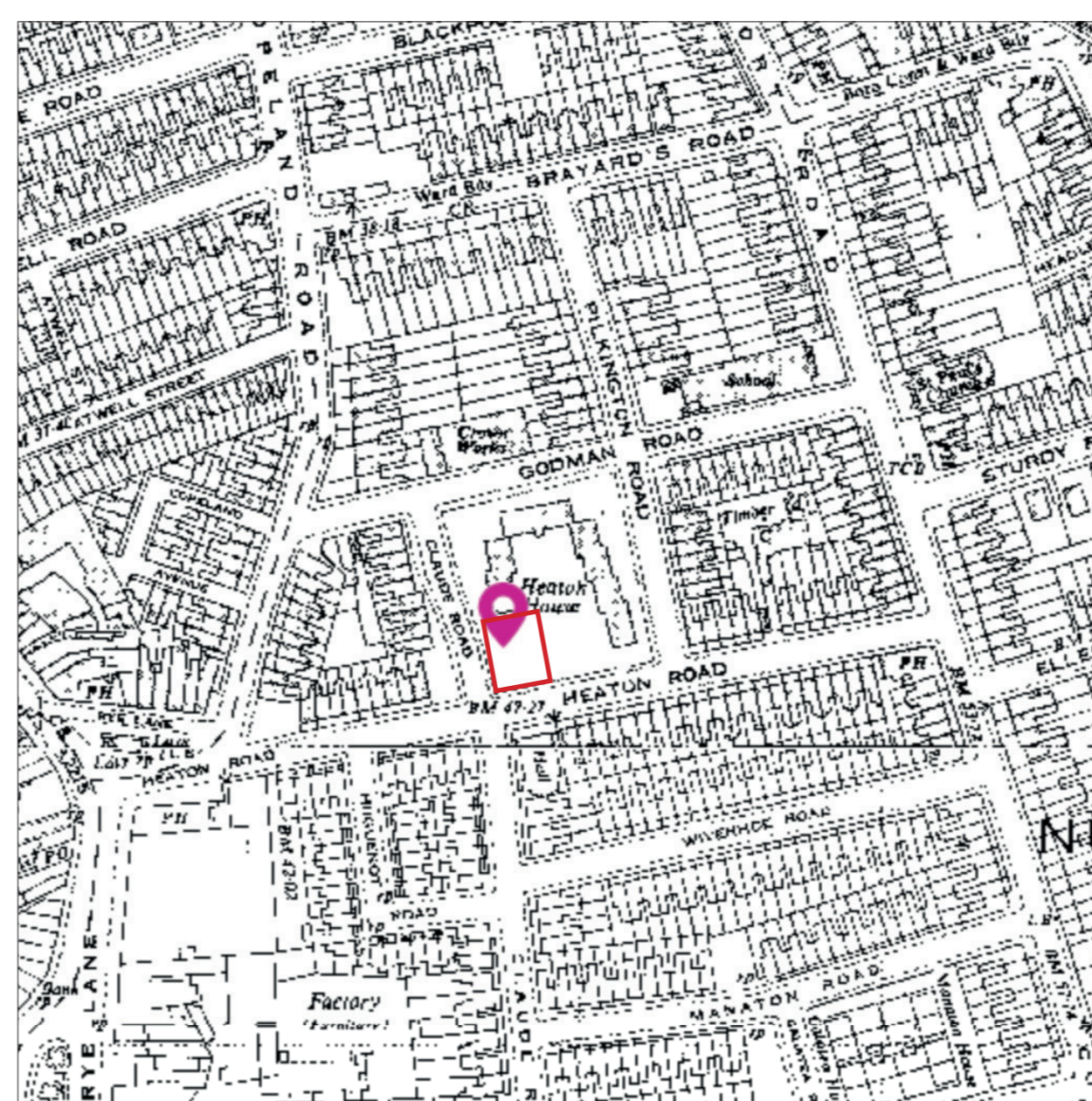
1. Filling out a feedback form
2. Completing an online survey: www.southwark.gov.uk/heaton
3. Emailing: consultation and enquiries: rahala.khalida@southwark.gov.uk or LBS Project Manager thandi.gonzales@southwark.gov.uk (telephone: 0207 5250118)

Existing Site

Historical Maps



▲ 1896 OS Map extract



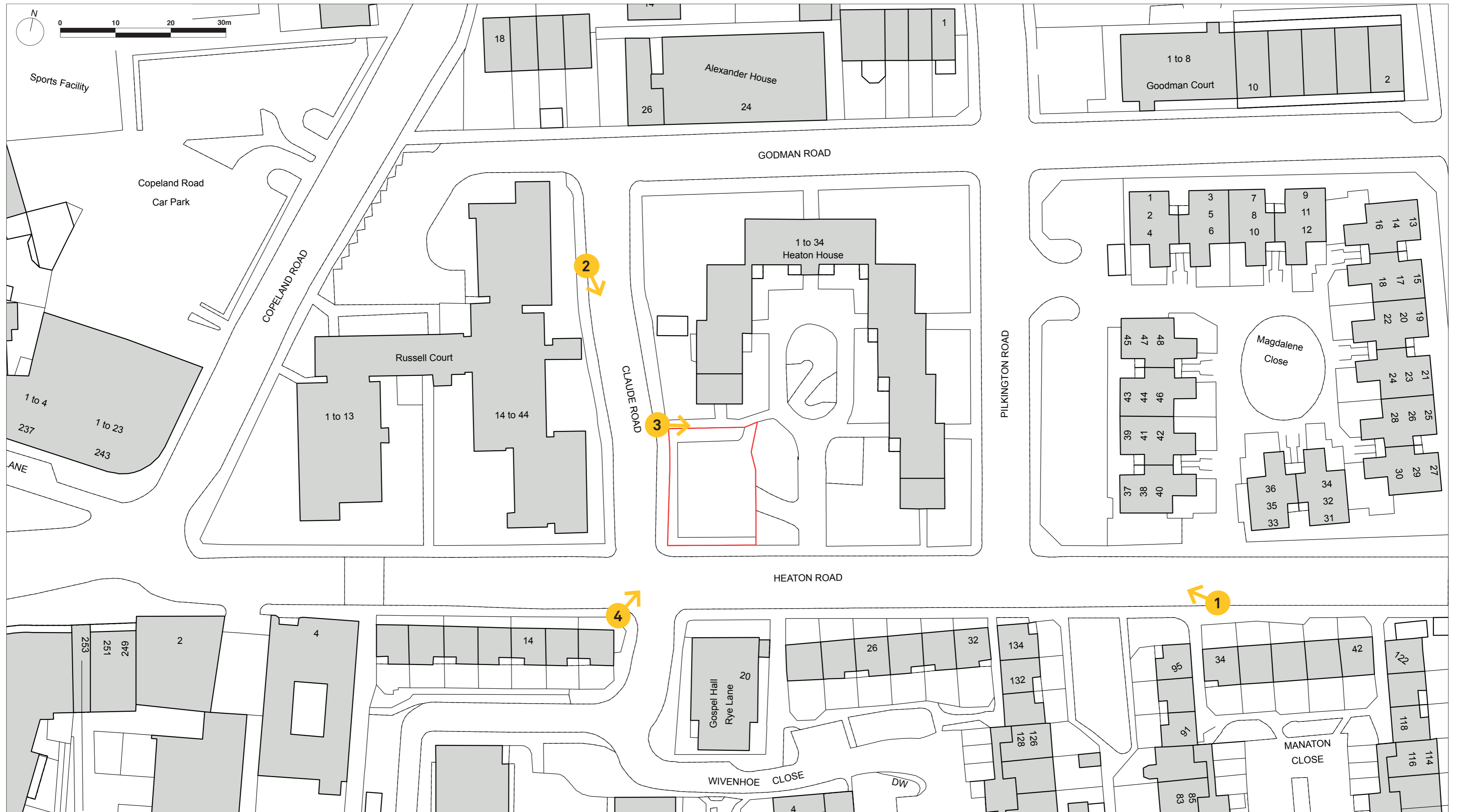
▲ 1952 OS Map extract



▲ 1998 aerial view

Existing Site

Site Context



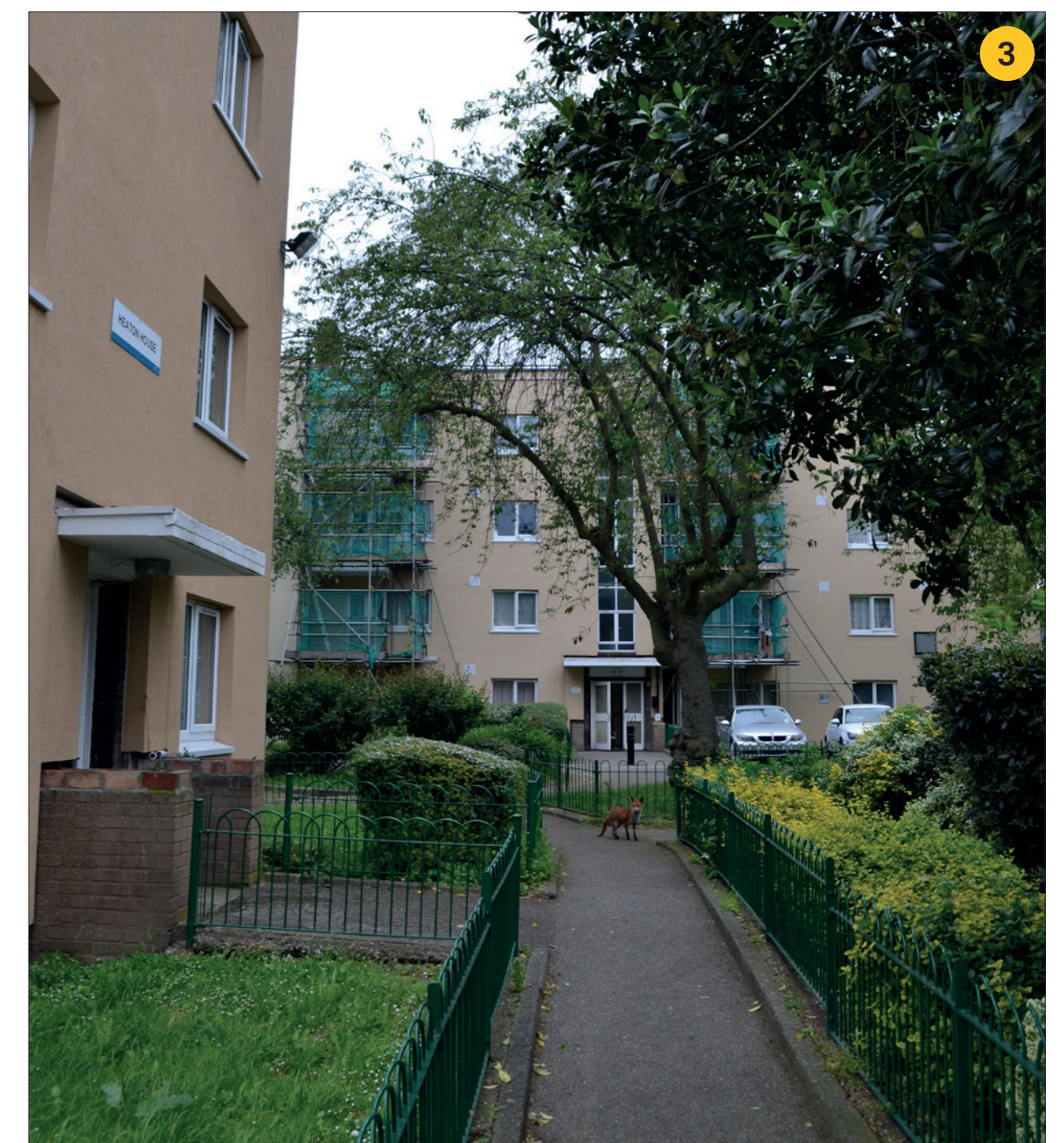
▲ Site plan with selected views annotated



▲ View of site building from Heaton Road



▲ View looking south along Claude Road



▲ View from Claude Road looking towards Heaton House

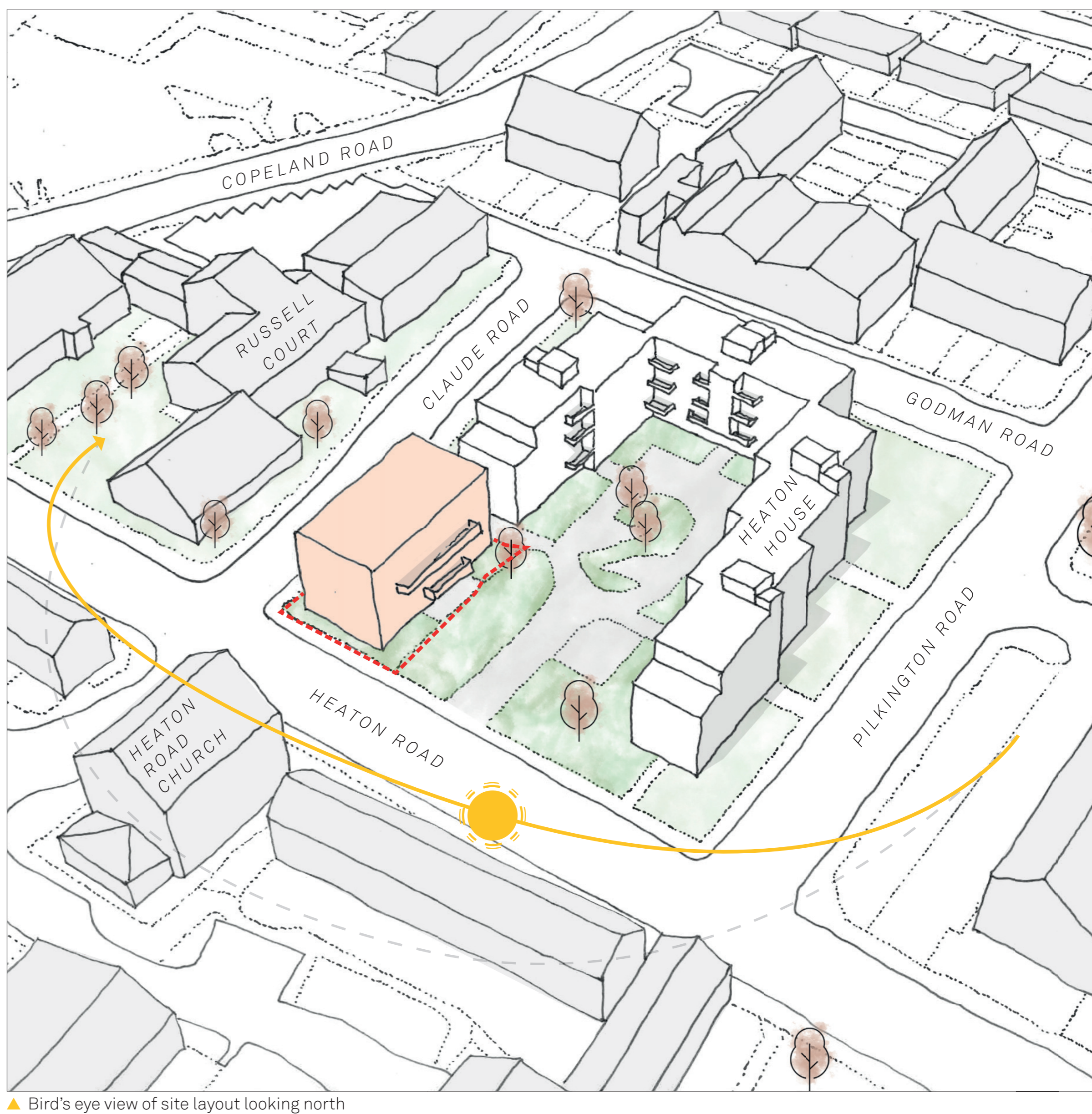


▲ View of site looking north from Heaton Road

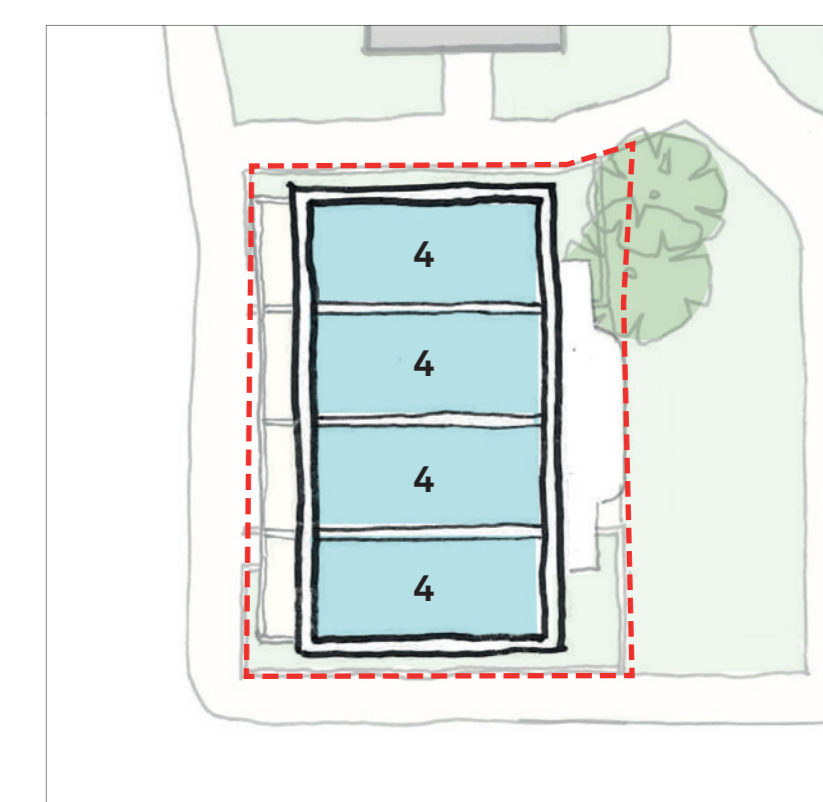
Site layout

Key features of our development proposals:

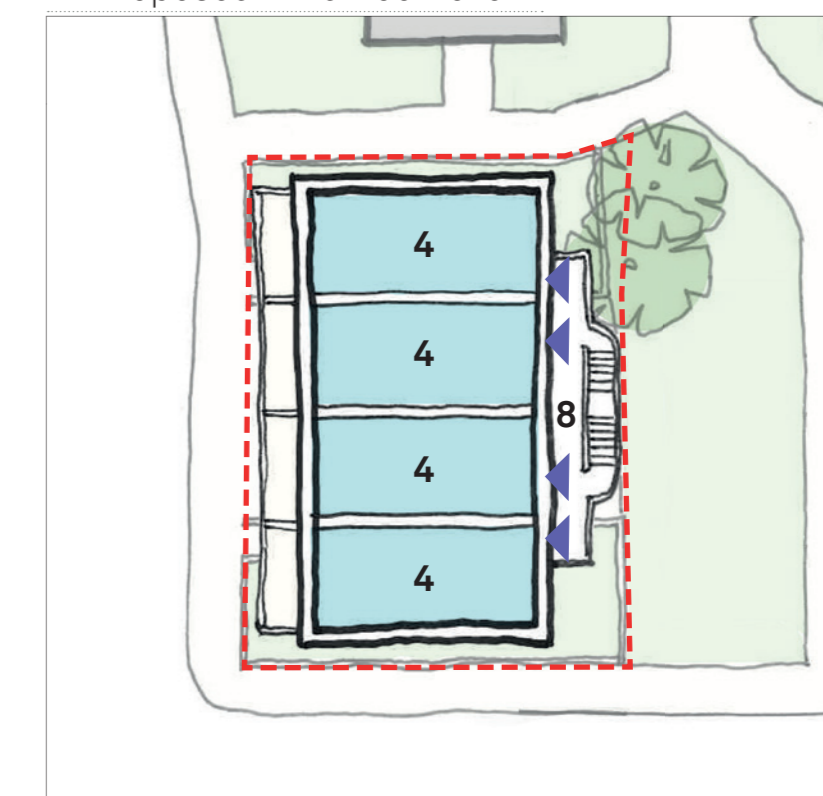
- Four-storey block reflecting height of existing Heaton House
- Linear block completing horse-shoe form of existing Heaton House, accommodating 7 new homes
- Proposals for maisonettes with front doors and communal entrance to Claude Road
- Integration of landscaping proposals, including retention of existing trees around Heaton House where possible
- Landscaping improvements to existing courtyard entranceway to Heaton House



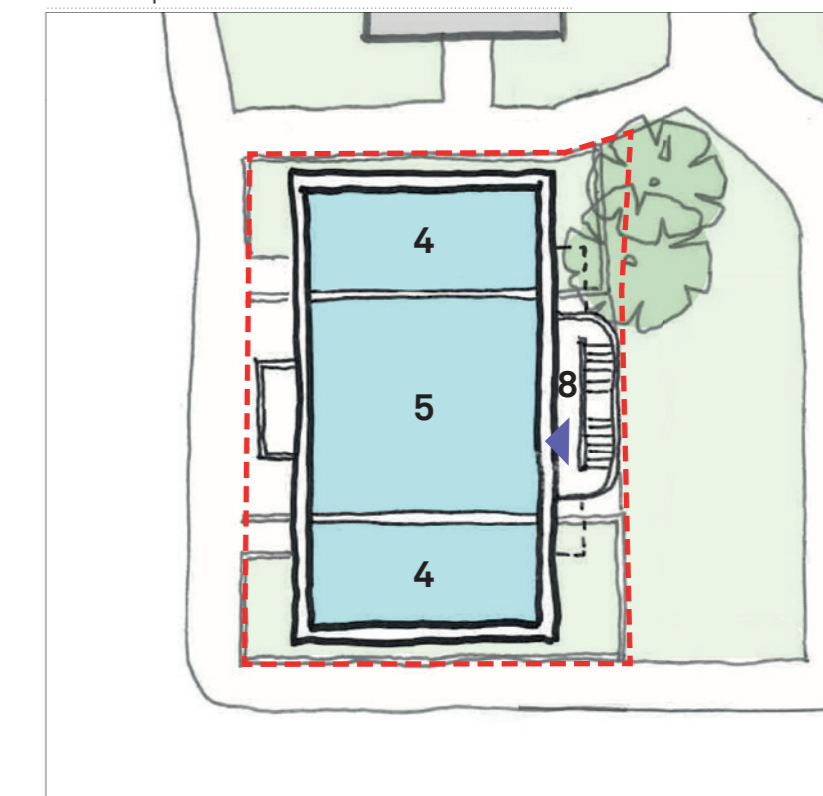
▲ Proposed layout plan (ground floor level)



▲ Proposed third floor level



▲ Proposed second floor level



▲ Proposed first floor level