

Parking zone information



What is a parking study?

A parking study is an opportunity for the council to assess parking stress in an area by asking local residents and businesses how they view parking on their street. This may be triggered by requests or reports from you about parking issues, or in anticipation of a development or scheme which may affect parking in the area.

What is a parking zone?

A parking zone is a network of streets covered by parking controls. Each street is marked out with either parking bays or double yellow lines.

Permit holders only – bays solely for the use of resident/business permit holders.

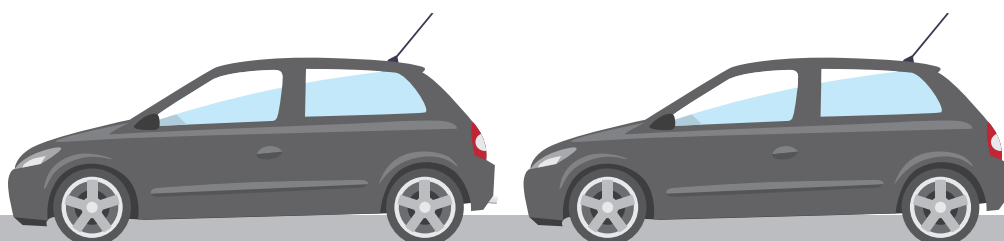
Shared use parking bays – bays which can be used on a pay by phone basis and by resident/business permit holders.

Disabled bays – bays to be used only by those in possession of a Blue Badge.

Double yellow lines – waiting restrictions which allow for active loading for up to 40 minutes and indicate where parking is deemed unsafe or obstructive.

How can I request a parking zone?

You can email highways@southwark.gov.uk or use this online form www.southwark.gov.uk/parkingzoneform



What are the advantages of having a parking zone?

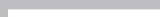
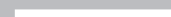
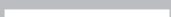
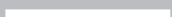
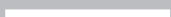
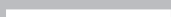
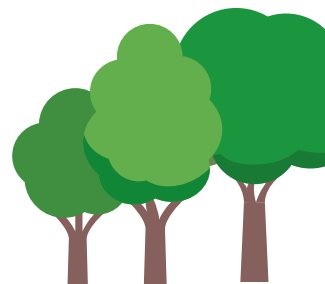
- ▶ Space is prioritised for local residents, businesses and their visitors.
.....
- ▶ Commuters will not be able to park on your street during the operating hours.
.....
- ▶ Improved access for emergency services and refuse vehicles.
.....
- ▶ 'Permit free' planning conditions can be placed on the upcoming developments so that parking stress is not increased by the construction of new residential properties.
.....
- ▶ Reduces the amount of cars parked on your street and improves air quality.
.....
- ▶ Road safety is improved by removing obstructions and providing better visibility at crossing points.
.....

" I am writing to say how delighted we are with the controlled parking zone in Grove Park, and to apologise for the resistance to your plan from everyone in this house. It's literally transformed the street — we very seldom use the car but when we do we can park without any difficulty at all and the street is now an open and peaceful place to live. "

Resident

What are the disadvantages of having a parking zone?

- ▶ Those entitled to a permit must pay to park in the zone. This payment contributes to the enforcement of parking controls and any surplus must legally be spent on improving the public highway.
.....
- ▶ Parking can be displaced into nearby uncontrolled roads.
.....
- ▶ Possible overall reduction in number of places to park.
.....
- ▶ Street clutter (signs and lines).
.....



When would your parking zone operate?

It is up to you. When we consult we send out a questionnaire asking what time you think the controls should operate and we also provide some guidance and information in this document. Officers will usually recommend the operating times that the majority of respondents ask for.

The two main options are All day and Part day.

All day parking zone

(e.g. 8.30am to 6.30pm)



Usually successful in areas that have a high demand for parking throughout the day with pressure not just from commuters but from local attractions such as parks and leisure centres.

These zones give a high degree of priority for local residents, businesses and their visitors; reducing the negative effects of commuter parking.

Longer operating hours would mean that residents would need to have visitors' permits for longer periods during the day.

Part day parking zone

(e.g. 12 noon to 2pm)



Usually successful in areas that have a sudden surge in demand for parking once a day, such as streets close to a commuter rail station.

Most of the day parking is free and unrestricted which can offer greater flexibility to those eligible for a permit and their visitors.

Part day controls are likely to result in higher pressure on parking particularly if the demand isn't just from commuters.

- ▶ There is no difference in price for residents' permits between a part day and all day zone. For a part day zone, you would however need to buy fewer visitor permits which could save you money.



Who can purchase a permit?

Residents

- ▶ If you live within the parking zone and your vehicle is registered to that address, you will be able to buy a resident parking permit.
- ▶ Those living on estates have their own parking restrictions which would not change but you can still purchase a permit for on-street parking and have your say.
- ▶ There is a maximum of three permits per household.
- ▶ Blue Badge holders get a 75% discount if they need to buy a residents' permit and a 50% discount on visitors' permits.
- ▶ Motorbikes and mopeds get a 75% discount on the price of a residents' parking permit.
- ▶ Owners of hybrid or electric vehicles get a 75% discount on the price of a residents' parking permit.

Prices ↘

1 month	3 months	6 months	12 months
£15.74	£36.58	£67.83	£125

- ▶ Motorbikes and mopeds
Hybrid and electric vehicles
Disabled badge holder's vehicles
£31.25 for 12 months

Businesses

- ▶ Businesses operating from an address within Southwark's parking zones may buy permits for vehicles that are essential to their business. They are not available if the vehicle is just used for commuting purposes.

Prices ↘

3 months	6 months	12 months	Electric vehicle
£180	£360	£590	£295 (50% discount)

On-street pay parking

- ▶ £2.75/hour (pay by phone)

For details on permits for visitors, home care workers and professional health workers please click <https://www.southwark.gov.uk/parking/parking-permits/on-street-permits>

Myth busting

Southwark Council is just trying to make money

Parking zones are introduced as a tool to manage the finite supply of parking space on our road network.

The cost of permits covers the implementation and the operational costs of the zone. Currently the only surplus revenue on the parking account is from penalty charge notices resulting from illegal parking. Legislation requires that any surplus must be reinvested back into road improvements.

This could be paid for with council tax

Council tax and vehicle excise duty help pay for services that are available to the entire population such as education, social services and road maintenance.

Parking zones only affect a local area and are expensive to set up and run.

Visitors and Tradespersons will no longer visit my home

You will be able to book visitor permits online, by text and if you prefer, paper vouchers are available.



For any further information, please contact:
highways@southwark.gov.uk